



# Technical Service Bulletin

## 34 Vehicle Electronics Malfunction message, DTC B116229 is stored in the steering wheel or vehicle electronics module

34 20 44 2047609/3 March 5, 2020. Supersedes Technical Service Bulletin Group 34 number 20-43 dated February 19, 2020 for reasons listed below.

Model(s)	Year	VIN Range	Vehicle-Specific Equipment
A3, S3, A3 Cabriolet, and RS3	2015 - 2018	All	With 0GC 7 speed S-tronic transmissions
A3, S3, A3 Cabriolet, and RS3	2019	A000001 – 125636 Or 1000001 - 033033	With 0GC 7 speed S-tronic transmissions
A3, S3, A3 Cabriolet, and RS3	2020	000001 - 009741	With 0GC 7 speed S-tronic transmissions

## Condition

REVISION HISTORY		
Revision	Date	Purpose
3	-	Revised header (Removed PR code filter) Revised <i>Required Parts and Tools</i> (Removed table)
2	02/19/2020	Revised title Revised header (Added module in DTC and updated models and model years) Revised <i>Condition</i> (Updated all information) Revised <i>Technical Background</i> (Defined problem) Revised <i>Production Solution</i> (Added solution) Revised <i>Service</i> (New repair) Revised <i>Warranty</i> (Updated for new repair) Revised <i>Required Parts and Tools</i> (Updated for new repair)
1	04/25/2017	Initial publication

### Customer states:

- Warning message in driver information display stating, "Vehicle Electronics Malfunction" or "Shift to P, otherwise vehicle can roll away. Doors do not lock if lever is not in P".

### Workshop findings:



# Technical Service Bulletin

---

The following DTC is stored in the steering wheel electronics module, J527 (address word 0016) or the vehicle central electrical system module, J519 (diagnosis address 0009):

- **DTC B116229** (Selector lever park position lock switch implausible signal).

## Technical Background

Component-related deviation in microswitch of the selector lever.

## Production Solution

Improved switch.

## Service

If the customer has the above condition and the DTC B116229 is stored in the steering wheel electronics module, J527 (address word 0016) or the vehicle central electrical system module J519 (address word 0009), then install the new externally mounted micro switch module and selector lever handle sleeve per the instructions below (Figure 1).



*Figure 1. New micro switch module.*

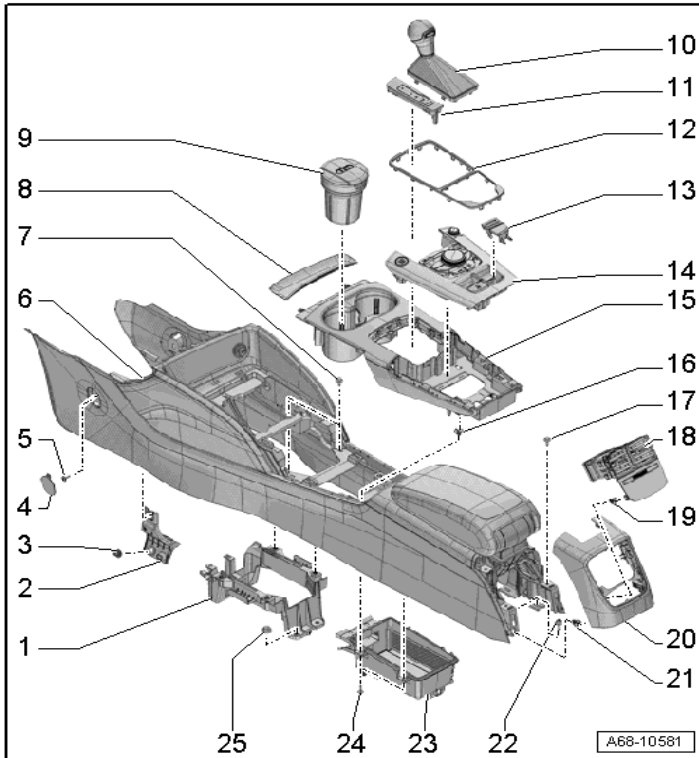
**⚠ Warning:** Before starting the repair the parking brake must be set so the vehicle does not roll during the repair.



# Technical Service Bulletin

---

1. Set the parking brake. Remove the shift knob with the boot (Position 10), selector lever transmission range position display unit Y26 (Position 11), and center console insert (Position 15) per the repair manual instruction (Figure 2).



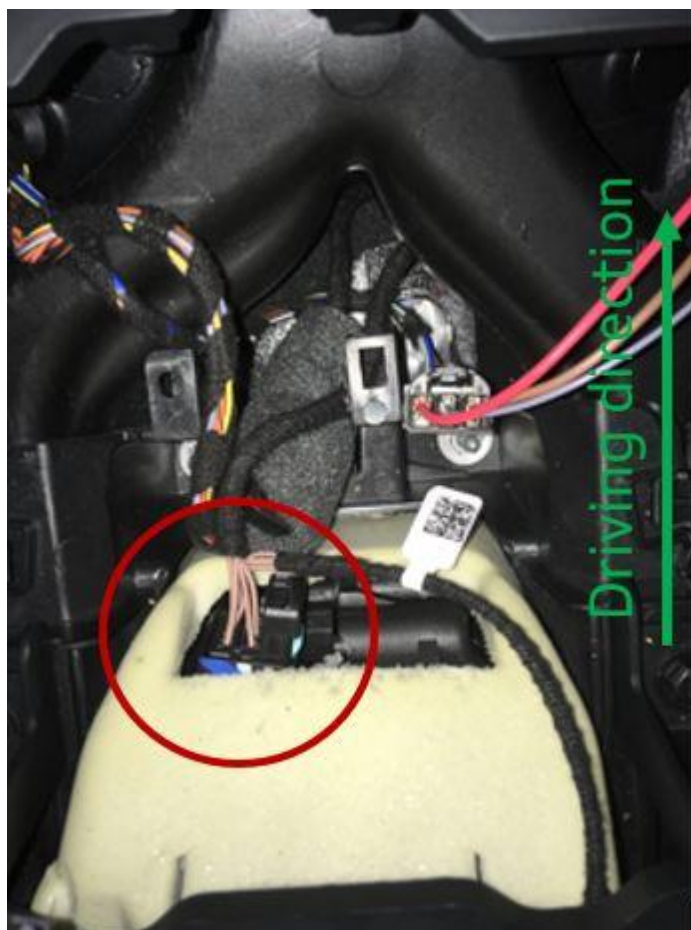
**Figure 2.** Center console overview.

2. Disconnect the electrical connector from the selector lever control module (Figure 3).



# Technical Service Bulletin

---



**Figure 3.** The electrical connection of the selector lever control module.

3. Carefully remove the foam insulation from the selector lever control module and carefully modify the insulation as shown below with scissors or a sharp knife (Figure 4 and Figure 5).



# Technical Service Bulletin

---





# Technical Service Bulletin

---

*Figure 4. Modified and original insulation.*



*Figure 5. Example of modified insulation installed on a shifter housing.*

- Carefully reinstall the foam insulation as shown above (Figure 5).

**Note:**

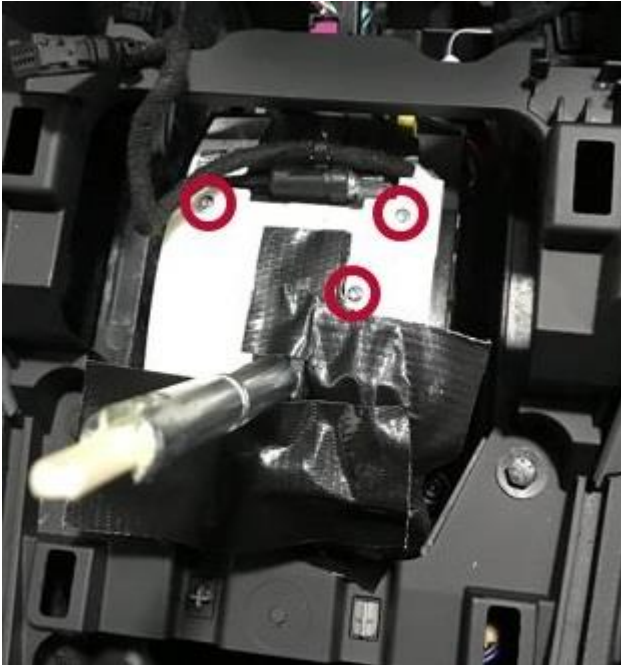
For the remaining instructions, we will show pictures of the repair without the insulation installed to facilitate better pictures of the repair.

- Tape the opening of the shift gate to protect the module from screws or tools falling into the control module. Tape the opening as shown below while leaving the screws (circled in red) uncovered (Figure 6).



# Technical Service Bulletin

---



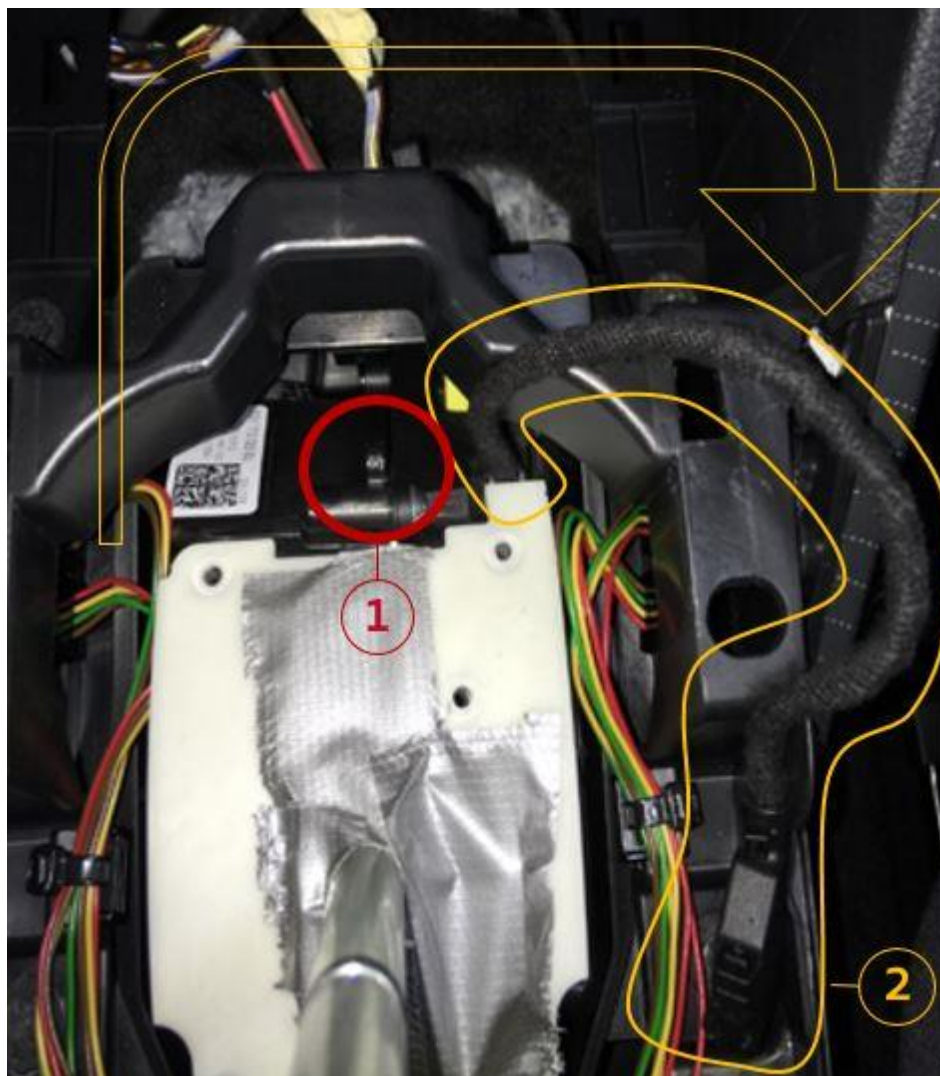
**Figure 6.** The tape covering shift gate and screw locations.

6. Remove the T-9 screws show above (Figure 6) circled in red. You may discard these screws, as they will not be reused. Then move the wiring of the selector lever transmission range position display unit Y26 out of the way to the passenger side as shown below (Figure 7). Remove the harness from the retention clip (Position 1) and set the harness to the side as shown in yellow (Position 2).



# Technical Service Bulletin

---



**Figure 7.** Display unit Y26 harness repositioning.

7. Lead the Y cable wiring harness of the new micro switch module under the crosspiece and on top of the foam insulation (Figure 8).





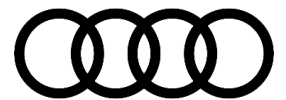
# Technical Service Bulletin

---



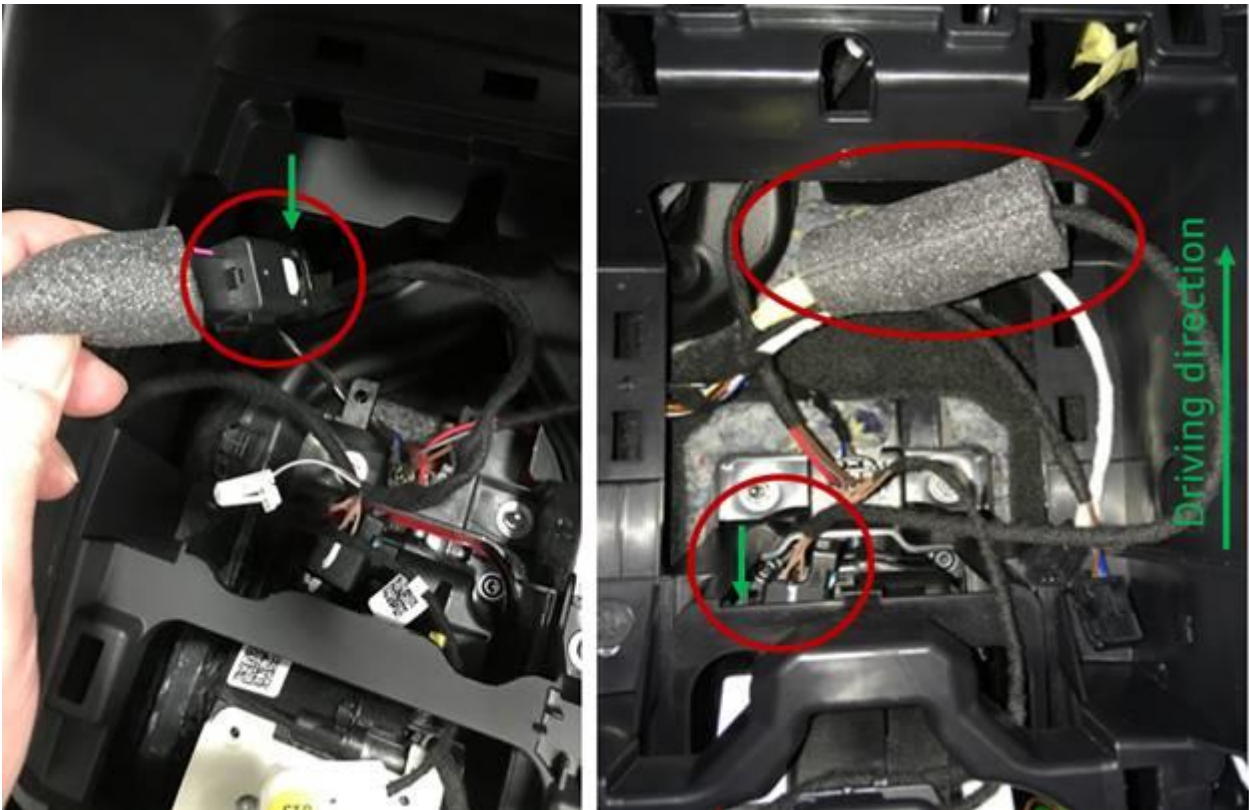
**Figure 8.** Wiring harness run under the crosspiece.

8. Plug one end of the Y cable into the selector lever control module and the other end into the existing vehicle harness. Pull the foam cover over the connection to the vehicle harness.



# Technical Service Bulletin

---



**Figure 9.** Wiring connections.

9. Install the microswitch module to the selector using the new longer T-9 screws included in the repair kit. After all three screws have been started, remove any of the tape that might interfere with the base of the microswitch module. Torque the screws to 1.0 Nm and remove the remaining tape from the shift gate (Figure 10).



# Technical Service Bulletin

---



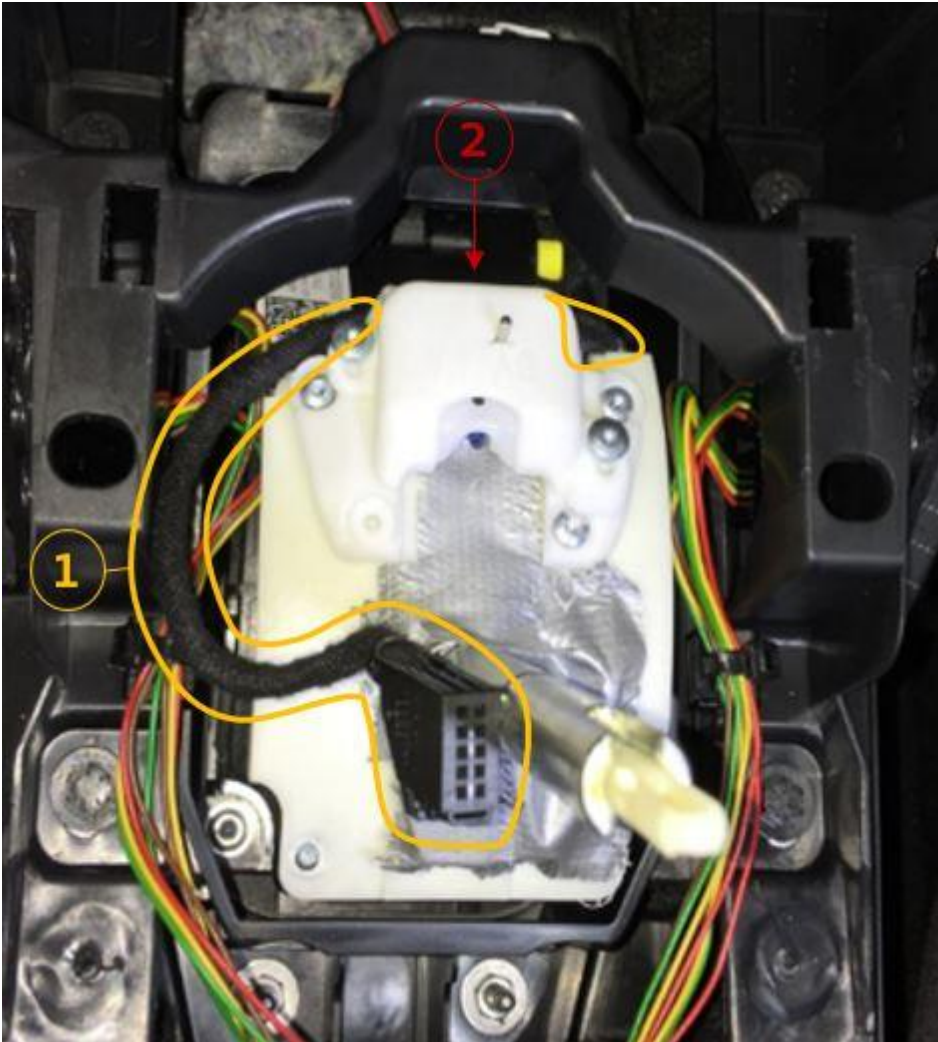
**Figure 10.** *Installing the microswitch module.*

10. As shown below route the wiring of the selector lever transmission range position display unit Y26 back to the driver's side of the shift selector (Position 1) and secure harness back to the selector lever control module (Position 2) (Figure 11).



# Technical Service Bulletin

---



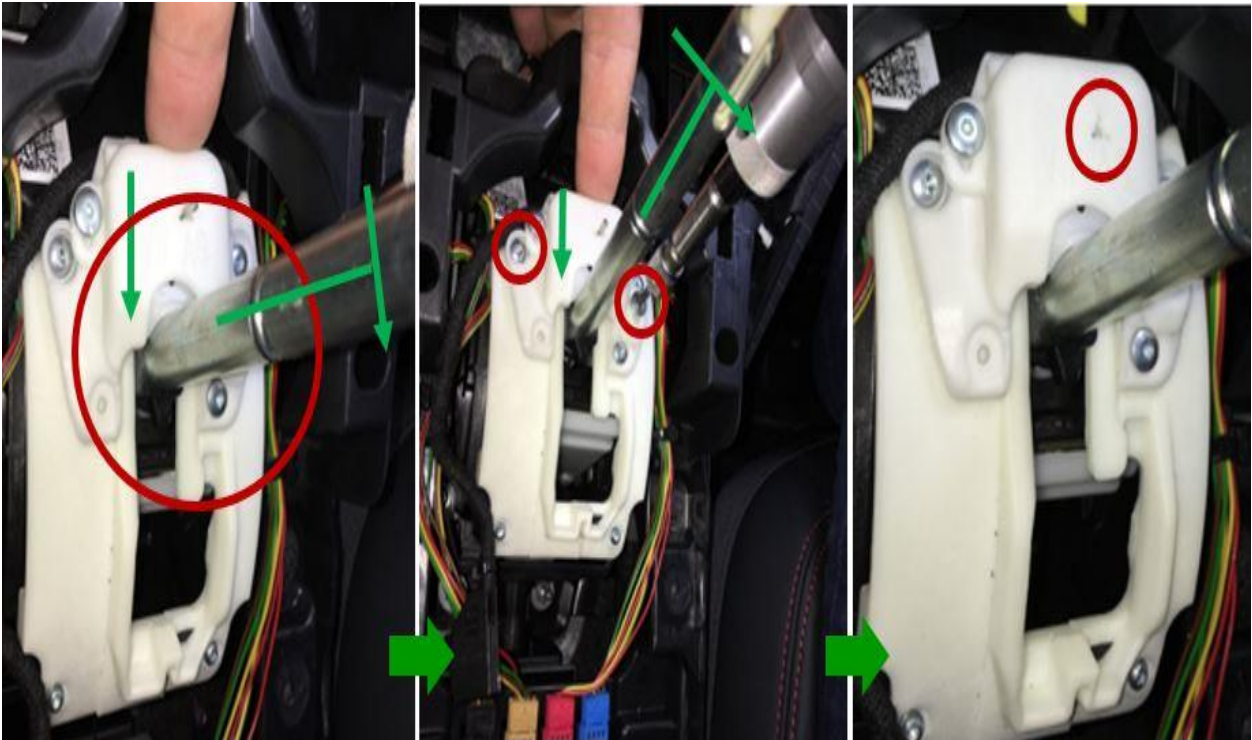
**Figure 11.** Display unit Y26 harness.

11. Place the selector lever into the “Park” position and adjust the microswitch module as shown below (Figure 12).
  - Lightly pull the selector lever toward the reverse lockout (the release mechanism must not be operated) and hold in this position.
  - Move the adjustable slide of the microswitch module until it is completely touching the selector lever and tighten the two T-9 screws to 1.0 Nm.
  - Carefully remove the locking pin from the microswitch module making sure you do not drop it into the open shift gate. Save the locking pin until the repair is complete as it may be needed for readjustment.



# Technical Service Bulletin

---



**Figure 12.** *Microswitch module adjustment.*

12. Reinstall the center console insert. Make sure all wiring has been routed correctly and cannot be damaged by sharp edges. Plug in display unit Y26 but do not install it in the console yet (Figure 13).



# Technical Service Bulletin

---



**Figure 13.** Console insert installed.

13. Install the new selector lever handle sleeve on the bottom of the shift knob. The original locking collar can be removed with a small screwdriver or micro pry bar (Figure 14). The new selector lever handle sleeve snaps in place of the old collar (Figure 15) and operates with the same locking function while protecting the microswitch module from interference with the shift boot.



# Technical Service Bulletin

---



**Figure 14.** Locking collar removing.



**Figure 15.** Selector lever handle sleeve.

14. Install the shift knob per the repair manual but do not install the boot to the console, as a 2<sup>nd</sup> adjustment might be needed.
15. Perform the GFF test plan for the DTC B116229 (Selector lever park position lock switch implausible signal) for fine-tuning of the microswitch module.
16. Reinstall the display unit Y26 and the shifter boot per the repair manual. Recheck for proper operation.



# Technical Service Bulletin

## Warranty

<b>Claim Type:</b>	<ul style="list-style-type: none"> <li>• 110 up to 48 Months/50,000 Miles.</li> <li>• G10 for CPO Covered Vehicles – Verify Owner.</li> <li>• If the vehicle is outside any warranty, this Technical Service Bulletin is informational only.</li> </ul>		
<b>Service Number:</b>	3705		
<b>Damage Code:</b>	0040		
<b>Labor Operations:</b>	Remove and install the console	6817 1900	See SRT
	Modify gear lever housing (installation of a microswitch module)	3410 3199	30 TU
<b>Diagnostic Time:</b>	GFF	0150 0000	Time stated on the diagnostic protocol (Max 70 TU)
	Road test prior to service procedure	No allowance	0 TU
	Road test after service procedure	0121 0004	10 TU
<b>Claim Comment:</b>	As per TSB #2047609/3		

All warranty claims submitted for payment must be in accordance with the *Audi Warranty Policies and Procedures Manual*. Claims are subject to review or audit by Audi Warranty.

## Required Parts and Tools

Always check with your Parts Department and/or ETKA for the latest information and parts bulletins.		
Part Number	Part Description	Quantity
3Q0713128	Microswitch module repair kit	01
8V0713169	Selector lever handle sleeve	01
See ETKA	Fasteners, Bolts, Nuts, and Screws as needed per the Repair Manual	See ETKA/ELSA





# Technical Service Bulletin

---

## Additional Information

All parts and service references provided in this TSB (2047609) are subject to change and/or removal.

©2020 Audi of America, Inc. All rights reserved. Information contained in this document is based on the latest information available at the time of printing and is subject to the copyright and other intellectual property rights of Audi of America, Inc., its affiliated companies and its licensors. All rights are reserved to make changes at any time without notice. No part of this document may be reproduced, stored in a retrieval system, or transmitted in any form or by any means, electronic, mechanical, photocopying, recording, or otherwise, nor may these materials be modified or reposted to other sites without the prior expressed written permission of the publisher.