



# HYUNDAI

## Technical Service Bulletin

GROUP

INTERIOR

NUMBER

20-BD-003H

DATE

February 2020

MODEL(S)

Genesis (DH)

**SUBJECT:**

SEAT BACKBOARD CLIP REPLACEMENT

**This TSB supersedes TSB#19-BD-004H-1 to provide seat backboard base clip locations.**

**Description:** Certain 2015-2016 Genesis (DH) vehicles may have a condition where the seat backboard comes loose. This bulletin describes the procedure to replace the seat backboard clip.



**Applicable Vehicles:** 2015-2016MY Genesis (DH) vehicles

**Parts Information:**

PART NAME	PART NUMBER	QTY
CLIP ASSEMBLY		1
	88399-B1000FFF	

Circulate To: General Manager, Service Manager, Parts Manager, Warranty Manager, Service Advisors, Technicians, Body Shop Manager, Fleet Repair

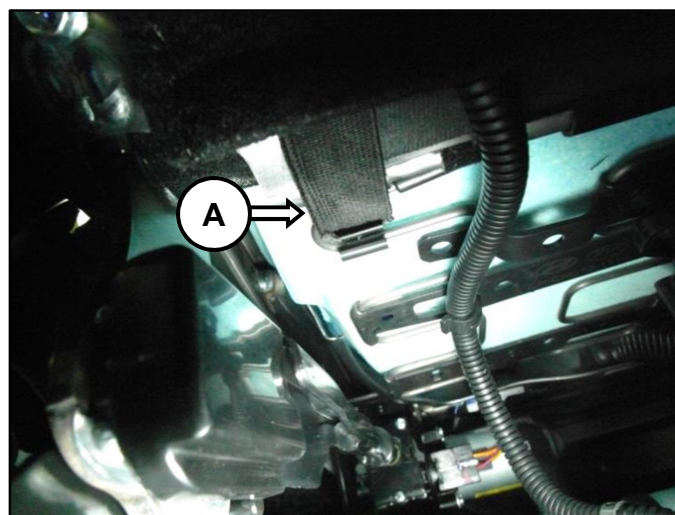
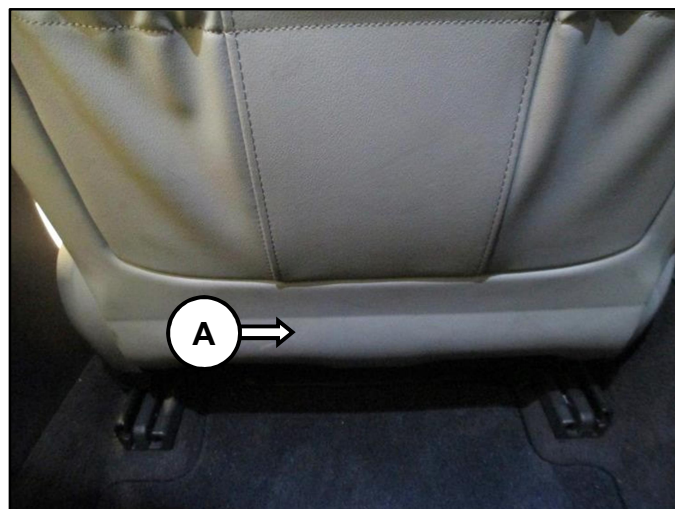
**SUBJECT:****SEAT BACKBOARD CLIP REPLACEMENT****Warranty Information:**

MODEL	OP CODE	OPERATION	OP TIME	CAUSAL PARTS	NATURE CODE	CAUSE CODE
Genesis (DH)	88399F00	SEAT BACKBOARD MOUNTING CLIP REPLACEMENT (1~2EA)	0.3	88380-B1000-*** 88380-B1100-***	I86	ZZ6
	88399F01	SEAT BACKBOARD MOUNTING CLIP REPLACEMENT (3~4EA)	0.5			

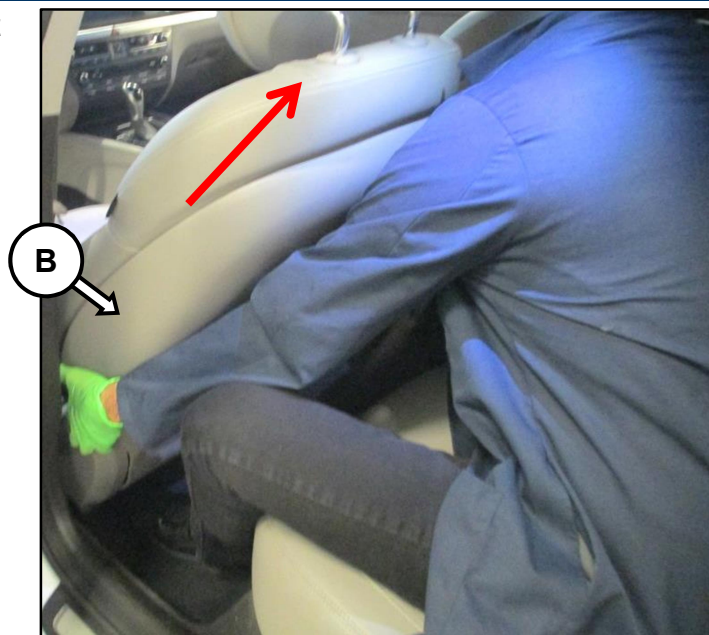
**Note: \*\*\* = include color designation to part number when submitting claim.**

**Service Procedure:**

1. Remove the protector (A) bottom straps located under the seat.



- 2. Place both hands at the bottom of the seat backboard (B), and lift to remove the backboard from the seat assembly.

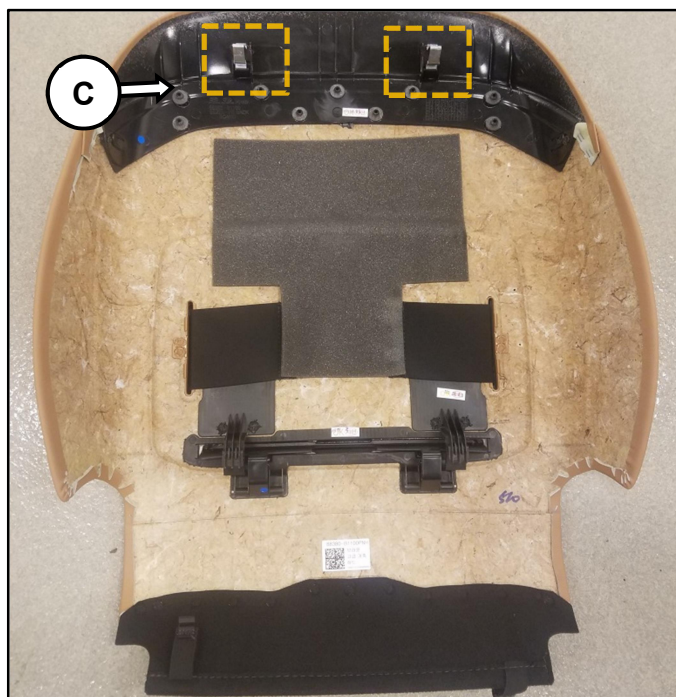


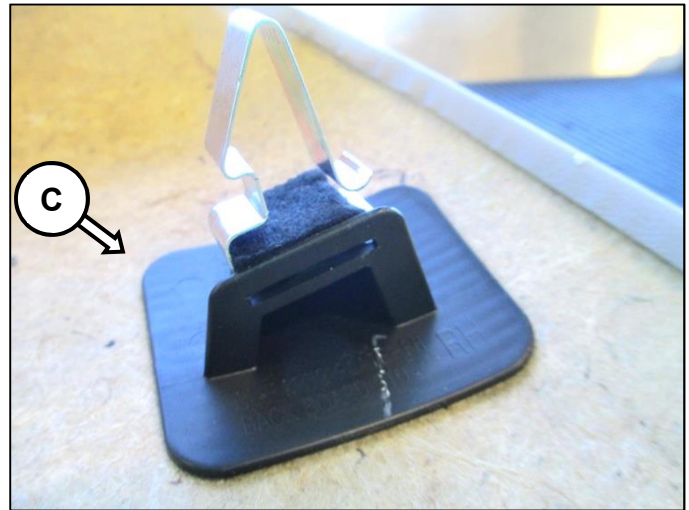
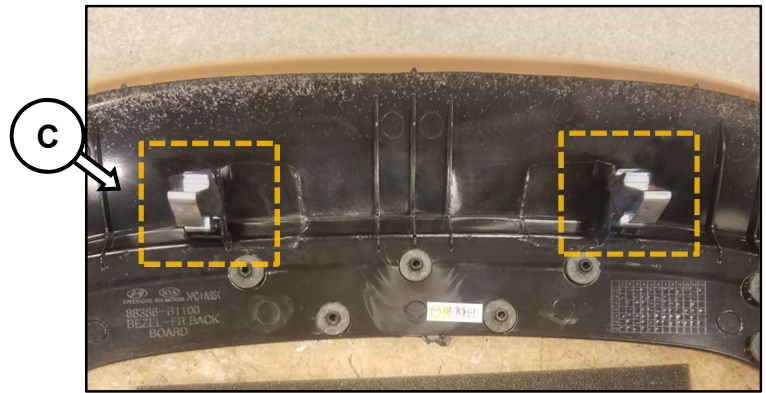
**⚠ CAUTION**

When removing, ensure not to damage bottom seat back retention hooks.



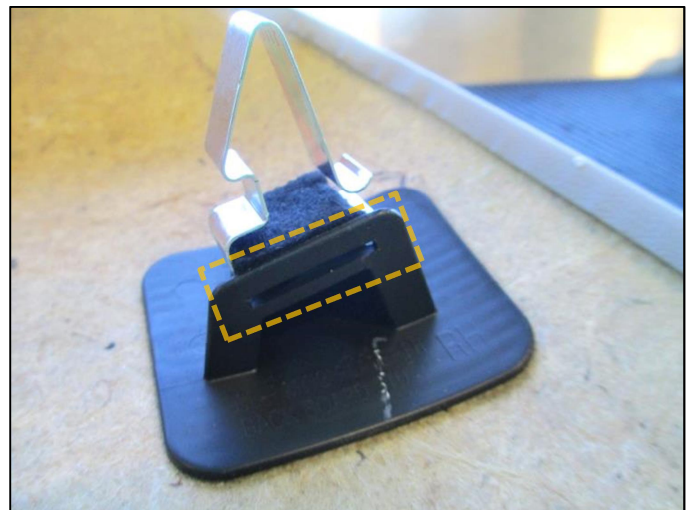
- 3. Lay the seat backboard on a clean workbench and locate the base clips (C).



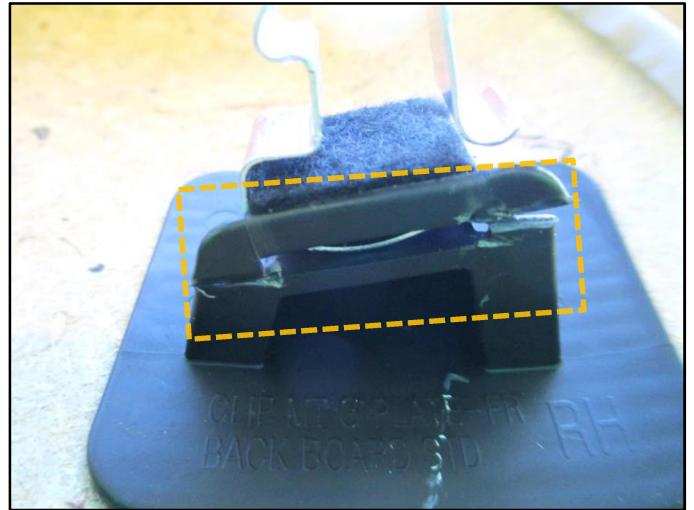


4. Inspect the base clips.

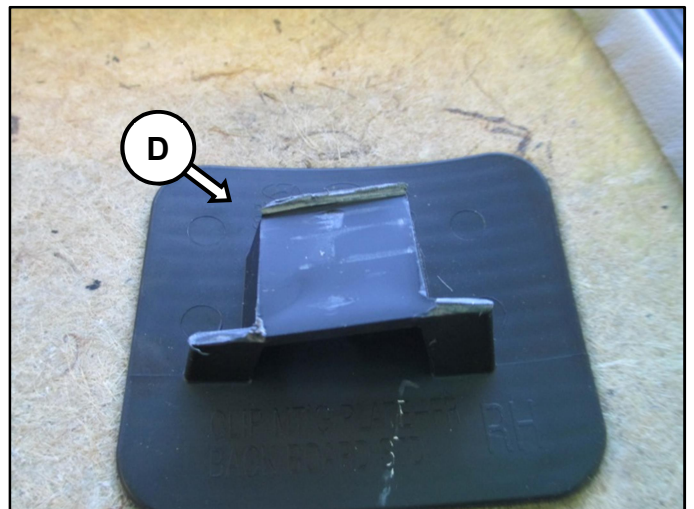
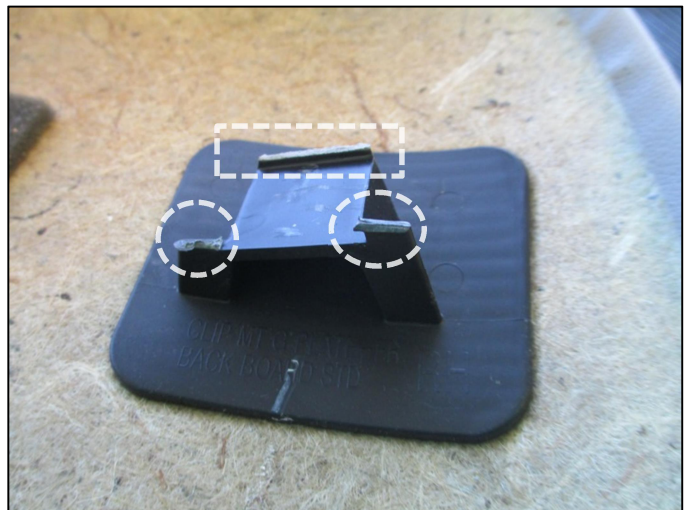
**The base clip is normal.**



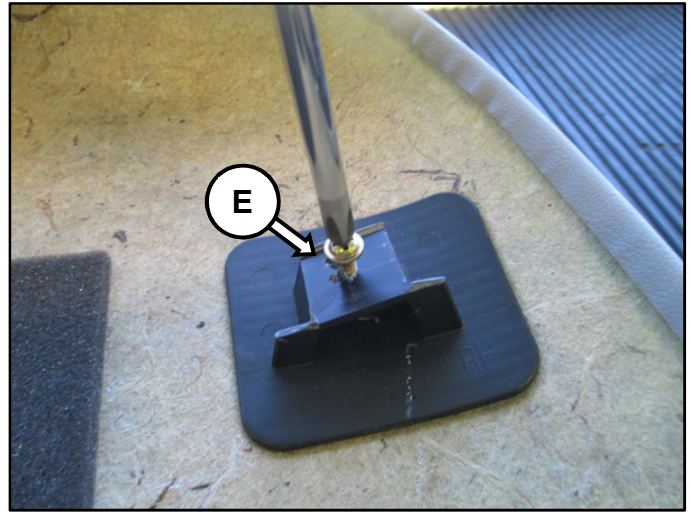
**The base clip is broken.**



- 5. Remove the broken base clip, and remove excess plastic to ensure base (D) is flat.



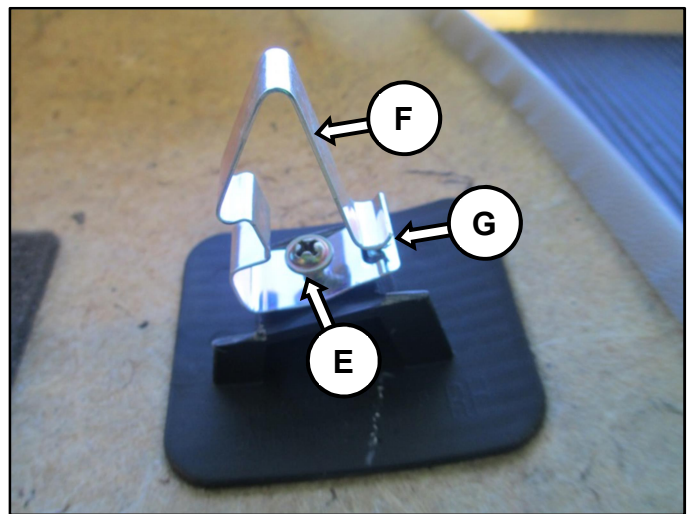
6. Tighten the supplied screw (E) to half screw length in the center of the base.



7. Assemble the screw (E) into the supplied new clip (F) and fully tighten to base.

**NOTICE**

Ensure opening (G) of clip is facing upward.



8. Reinstall the seat backboard to the seat assembly and reattach the protector straps.

