

Subject: Double Idler Pulley Kit Retrofit			
Field Change Program: Procedure	Procedure Number: 16-40	Revision: A	Date: 02/21/2020
Coach Section: 16- Heating & A/C	P/N: 08-27-1357		Type: Product Improvement

Application:

Coach Model	Model Year	VIN
J4500	2018 - 2019	68801 - 69366

WARNING

Read this entire procedure before beginning work.

Use Safe Shop Practices at All Times.

To avoid personal injury:

- a. Proper Personal Protective Equipment (PPE) must be worn. Safety glasses and protective gloves are required for working with DEF Fluid.*
- b. Turn the main battery disconnect switch to the OFF position.*
- c. Ensure that both the front and the rear wheels are chocked.*
- d. Position the ENGINE RUN and ENGINE START switches on the engine compartment remote control box to the OFF position.*
- e. Allow enough time for components to cool down prior to working in the engine compartment.*

1.0 Description

This procedure outlines steps to replace the double groove belt and single idler pulley bracket on AC compressor with single groove matched belts and double idler pulley bracket respectively.

2.0 Material requirements

Kit 26-16-0034 contains the following parts:

ITEM	PART NO	QTY	U/M	DESCRIPTION
1	08-27-1538*	1	EA	Belt-A/C Compr, 5VX, matched set
2	08-01-1790**	1	EA	Spacer
3	08-27-1336	2	EA	Bolt-Idler pulley, 43.35mm thread LG
4	08-27-1383	10	EA	Washer-Idler,SST, .406 ID, .135 THK
5	08-27-1354	2	EA	Pulley- Idler 74mm Dia X 57mm long w/ cover
6	08-27-1395	1	EA	Bracket assy-Idler
7	19-01-1772	3	EA	Bolt-Hex,Flanged, 3/8-16UNC X 1-3/4, Grade 8, Black PH
8	19-03-0498**	1	EA	Nut-Hex,Flanged, Lock 5/16-18
9	19-03-0535	3	EA	Locknut-Flanged, 3/8-UNC Gr8
10	19-1-240**	1	EA	Screw-Cap, Hex, 5/16-18 X 2.25
11	19-2-296**	1	EA	Washer-5/16 Gr8 STL

*This part is a set of 2 belts

**Parts apply only for the coaches equipped with DD13 engine.

3.0 Special Tools

Prybar.

4 X 4 wooden block.

Belt Alignment tool (Vendor: VibrAlign, APN: 100-BH2)



Belt alignment tool

4.0 Procedure

4.1 Changing the belt

Open the engine door using the latch behind the curbside service door.



Rotate the lever
counter clockwise

Lift the AC compressor unit from the curbside service door using a prybar. Place a 4 x 4 wooden block on the frame as a support for the prybar. Hold the prybar to remove tension on the belt.



4X4 wooden block

Pry bar

Remove and discard the double groove belt on the AC compressor.



Double groove belt

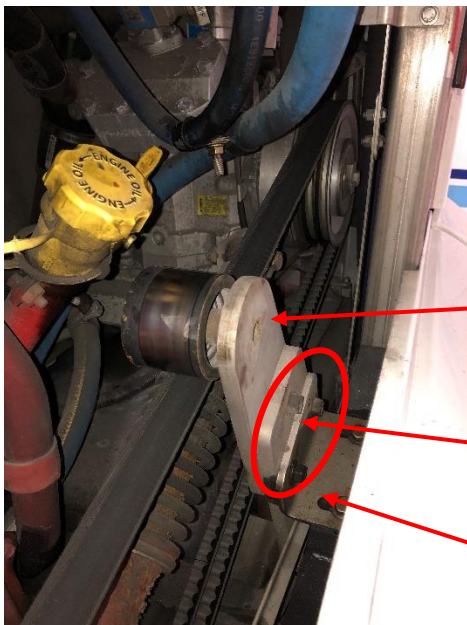
Install single groove matched belts, MCI P/N: 08-27-1538, as shown below.



Single groove matched belts

4.2 Replacing the top idler pulley bracket assembly

Remove and discard the three bolts, washers and nuts securing the idler bracket assembly to the idler bracket stiffener. Discard idler bracket assembly.

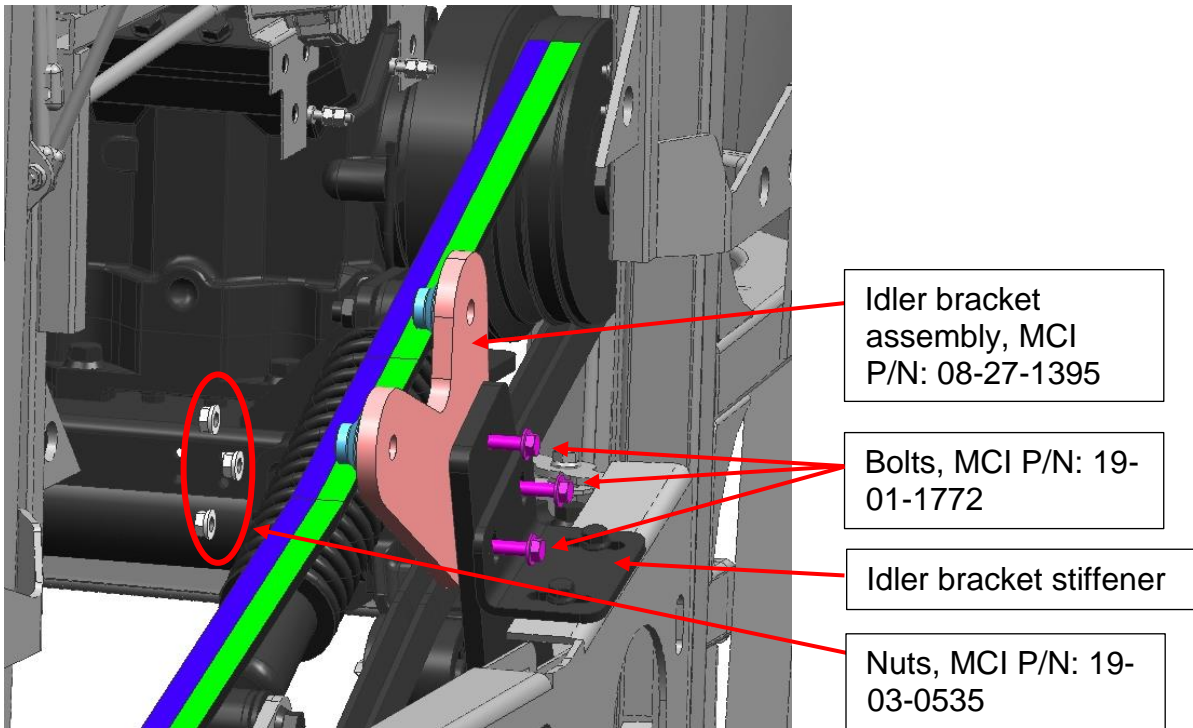


Idler bracket assembly

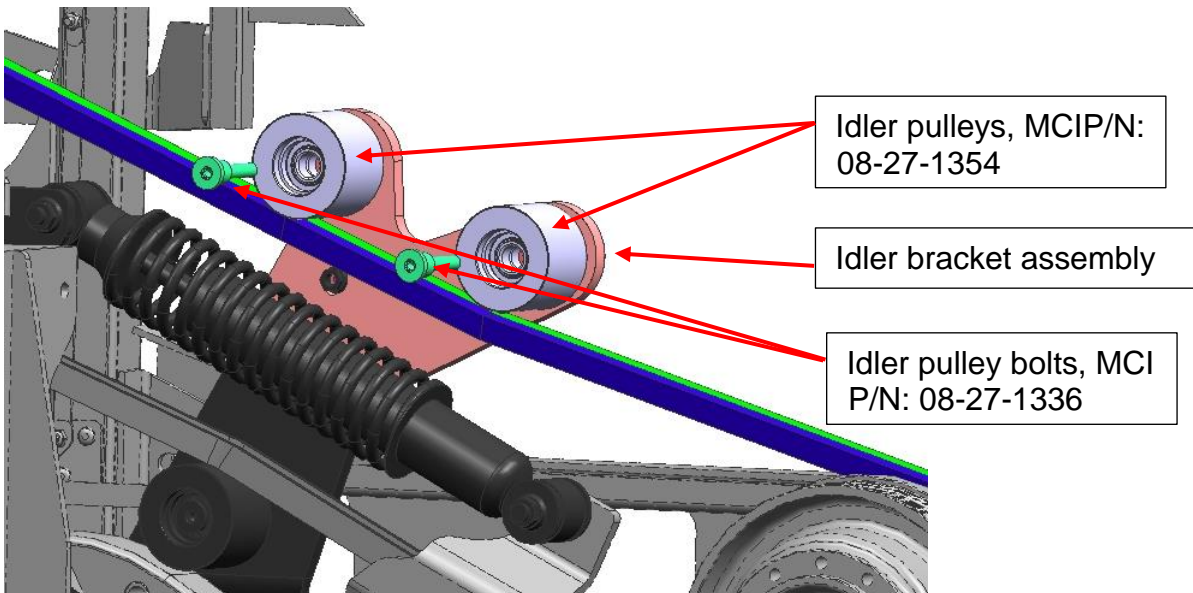
Remove and discard the bolts, washers and nuts

Idler bracket stiffener

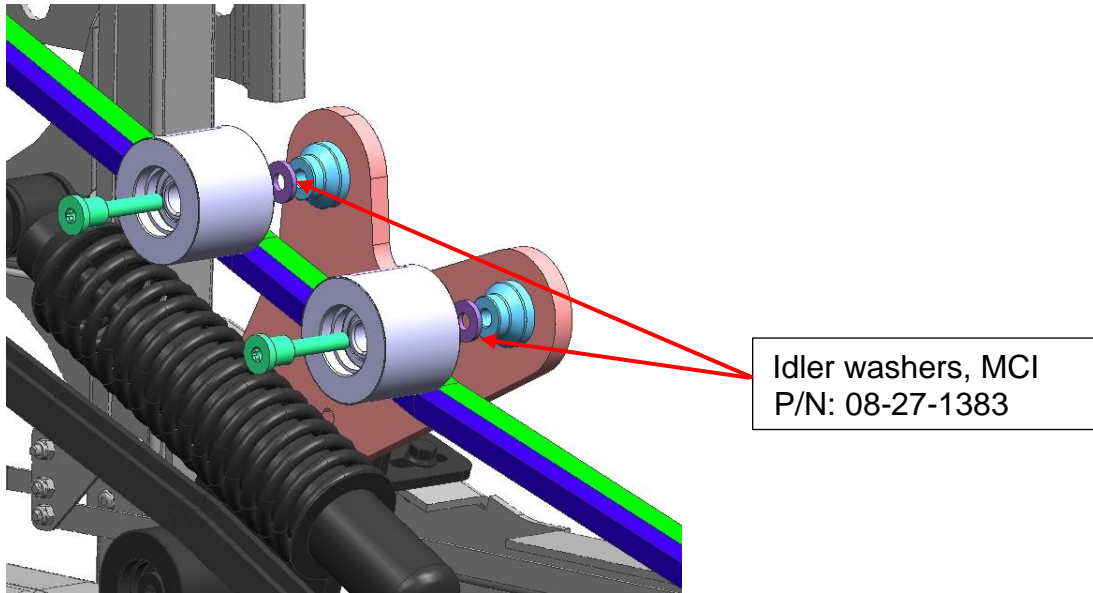
Install idler bracket assembly, MCI P/N: 08-27-1395, to the idler bracket stiffener using bolts, MCI P/N: 19-01-1772, and nuts, MCI P/N: 19-03-0535, as shown below. Torque the bolt to 44 Ft-Lb.



Remove the dust cover on the idler pulleys, MCIP/N: 08-27-1354, and install them to the idler bracket assembly using idler pulley bolts, MCI P/N: 08-27-1336.



If the pulleys are not observed to be at the center of the belt, add idler washers, MCI P/N: 08-27-1383, as required between the pulley and idler bracket assembly as shown below.



Torque idler pulley bolt to 30Ft-Lb.

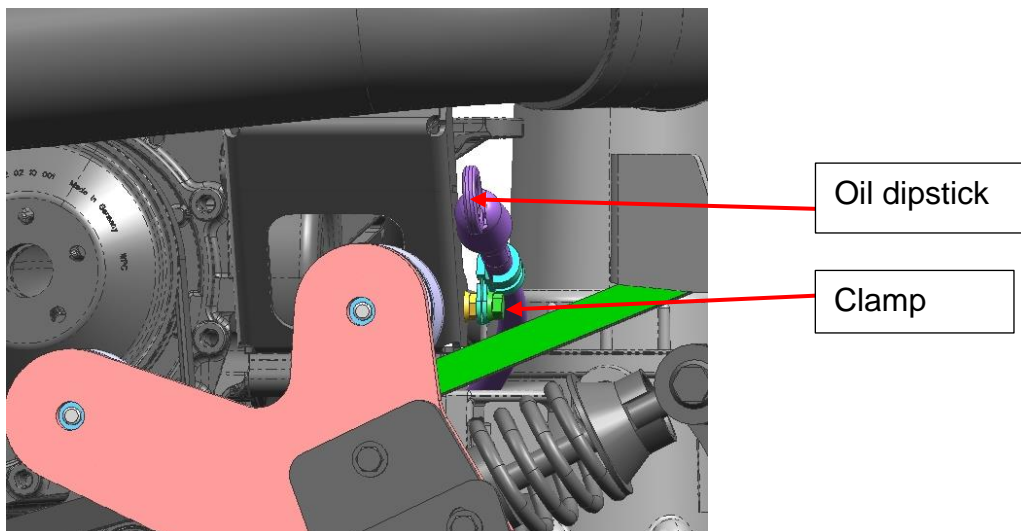
Press dust cover into pulley until the flat surface of the cover is recessed .03" past pulley surface.

If the coach is equipped with ISX engine proceed to **Section 5.0**.

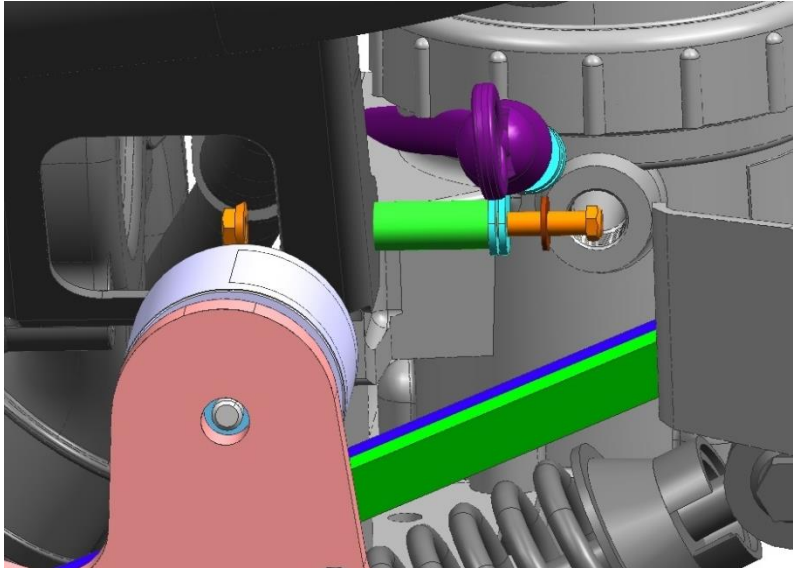
If the coach is equipped with DD13 engine continue to **Section 4.3** below.

4.3 Retrofitting spacer to the oil dipstick

Remove and discard screw and nut securing the oil dipstick clamp.



Secure the dipstick p-clamp to oil fill bracket assembly using the spacer, MCI P/N: 08-01-1730, nut, MCI P/N: 19-03-0498, screw, MCI P/N: 19-1-240 and washer, MCI P/N: 19-2-296, as shown below.



5.0 Verification

Use the belt alignment tool to verify alignment of AC compressor pulley to the pulley on the crankshaft following the instructions in the maintenance manual section 16A-2.



Laser line on the tool

End of the procedure