



Technical Service Bulletin

GROUP

CAMPAIGN

NUMBER

20-01-005H

DATE

February, 2020

MODEL(S)

SONATA (DN8)

SUBJECT:

ECM SOFTWARE UPDATE – GDI P0456 (SERVICE CAMPAIGN T4N)

★ IMPORTANT

*****Dealer Stock and Retail Vehicles*****

Dealers must perform this Service Campaign on all affected vehicles prior to customer retail delivery and whenever an affected vehicle is in the shop for any maintenance or repair.

When a vehicle arrives at the Service Department, access Hyundai Motor America's "Warranty Vehicle Information" screen via WEBDCS to identify open Campaigns.

Description:

This bulletin provides information related to an Electronic Control Module (ECM) software update to revise the logic for DTC P0456: EVAP System Leakage Detected – Very Small Leak.

Applicable Vehicle: Certain 2020MY Sonata (DN8) equipped with 1.6T GDI engine.

Warranty Information:

Model	Op. Code	Operation	Op. Time	Causal Part	Nature	Cause
Sonata (DN8)	00DA03R0	ECM UPGRADE	0.3 M/H	39116-2M003	I3T	ZZ3

NOTE 1: Submit Claim on Campaign Claim Entry Screen.

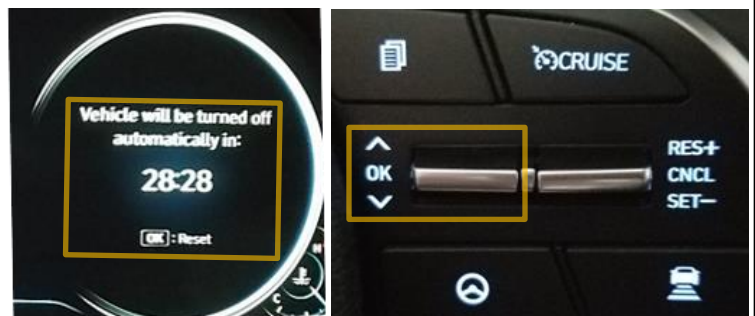
NOTE 2: If a part is found in need of replacement while performing Service Campaign XXX and the affected part is still under warranty, submit a separate warranty claim using the same Repair Order. If the affected part is out of warranty, submit a Prior Approval Request for goodwill consideration prior to performing the work.

NOTICE

The ECM Software Update takes approximately 15 minutes to perform. However, the vehicle is equipped with a 30 minute factory default Vehicle Auto-Shut Off feature.

If the **Vehicle Shut-Off Timer: XX:XX** appears on the cluster, press **OK** on the steering wheel to reset the timer before starting the ECM update.

In the event of ECM update failure due to Vehicle Auto-Shut Off activation, perform the ECM update again in the **Manual** mode.



GDS Information:System Selection: **ENGINE CONTROL MODULE (ECM)**

Event #	Description
584*	DN8A 1.6T-GDI – P0456 DTC IMPROVEMENT

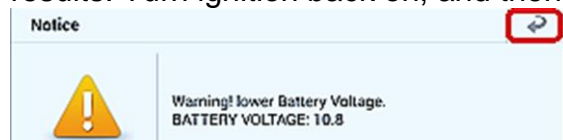
(*or use a later available event as listed in the GDS ECU Update screen if one is available.)

Service Procedure:

1. Perform GDS Mobile software update per TSB **15-GI-001**.
2. After successful completion of **ECM software update**, check for Diagnostic Trouble Codes in **ALL** menus and erase any DTC.
3. Confirm normal vehicle operation.

NOTICE**You must initially perform GDS ECM Update in Auto Mode.**

If the ECM Update starts but then fails in Auto Mode, perform the update in Manual Mode to recover.

! WARNING**GDS Vehicle Battery Voltage Warning:**If voltage is below 12 volts as per the below GDS warning, then select **Back** and run the engine at least 20 minutes to ensure an adequate battery state of charge for reliable update results. Turn ignition back on, and then retry the ECU update again.**ECM ROM ID Information Table:**

MODEL	TM	EMISSION	IMMO.	PCM P/No.	ROM ID	
					OLD	NEW
DN8	8AT	1.6T-GDI	+IMMO	39116-2M003	TDNA0NU06F00FE03 TDNA0NU06F10FE03 TDNA0NU06F20FE03 TDNA0NU06F30FE03	TDNA0NU06F40FE03

NOTE: +IMMO = Start Stop Button,**Manual Mode Password Information Tables:**

EVENT #	MENU	PASSWORD
#584	DN8A 1.6T-GDI +IMMO 39116-2M003	3705