

 <b>HYUNDAI</b> <b>Technical Service Bulletin</b>	GROUP <b>Engine</b>	NUMBER <b>20-EM-001H</b>
	DATE <b>February, 2020</b>	MODEL(S) <b>Elantra (AD), Elantra GT (PD)</b>
<b>SUBJECT: CENTER MUFFLER ASSEMBLY REPLACEMENT</b>		

**Description:** Some 2018-2019MY Elantra (AD) and Elantra GT (PD) 2.0L vehicles may have a weakened weld near where the center muffler is attached to the exhaust pipe. This condition may cause the center exhaust pipe of the muffler to exhibit an exhaust leak and/or exhaust noise.

Follow the procedure outlined in this bulletin to replace the center muffler assembly to correct this condition.

**Applicable Vehicles:** 2018-2019MY Elantra (AD) vehicles equipped with Nu 2.0L engines.  
2018-2019MY Elantra GT (PD) vehicles equipped with Nu 2.0L engines.

**Parts Information:**

Part Name	Part Number	Application
Center Muffler (QTY 1)  (Center muffler varies by P/N)	28650-F2500	Elantra (AD) Nu 2.0L
	28650-G3410	Elantra GT (PD) Nu 2.0L
Clamp (QTY 1) 	28641-C8540	Use for attaching replacement center muffler pipe to catalyst

**Warranty Information:**

MODEL	OP CODE	OPERATION	OP TIME	CAUSAL P/N	NATURE CODE	CAUSE CODE
Elantra (AD)	28650F02	Center Muffler Replacement	0.5 M/H	28650-F2500	Q55	ZZ7
Elantra GT (PD)	28650F02	Center Muffler Replacement	0.5 M/H	28650-G3410		

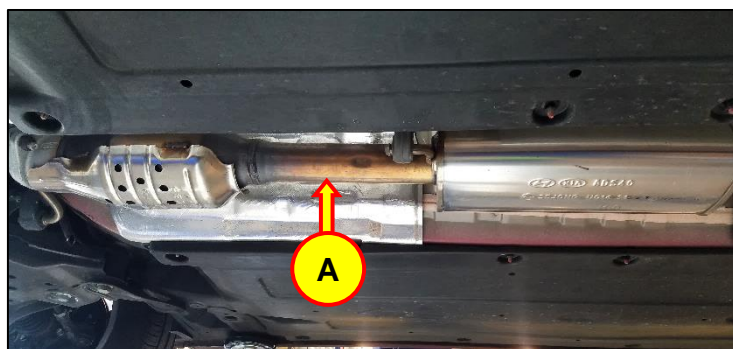
**NOTE:** Normal warranty applies.

**Service Procedure:**

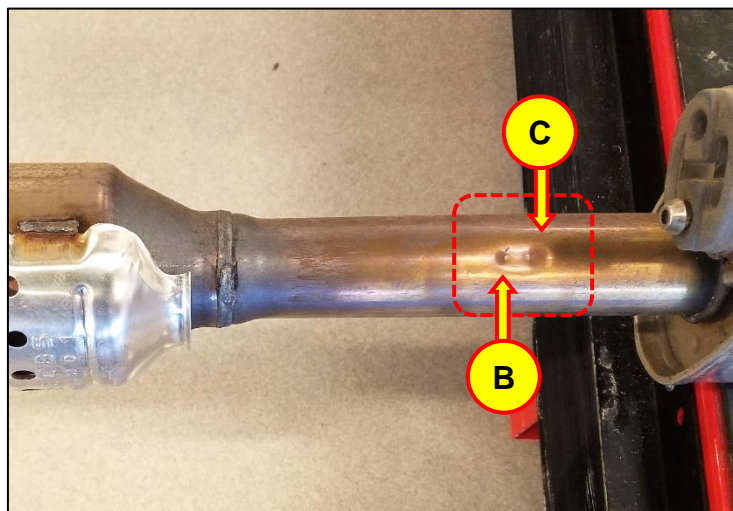
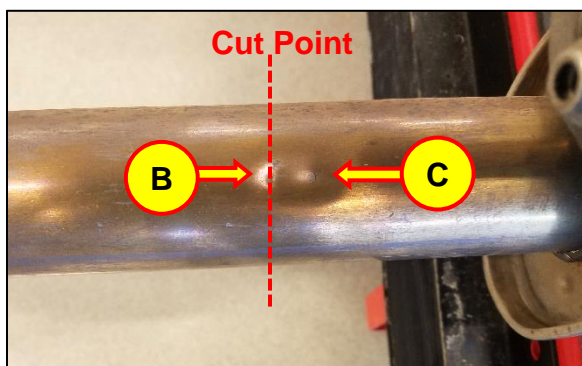
- Lift the vehicle on a hoist and then refer to the Shop Manual to remove the center muffler (A) from the vehicle.
  - Engine Mechanical → Intake And Exhaust System → Muffler → Repair Procedures

**CAUTION**

Allow the exhaust to cool down before performing any work.



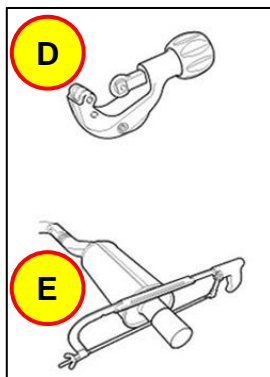
- Locate the front dent (B) and rear dent (C) of the center muffler pipe for cutting at point (B).



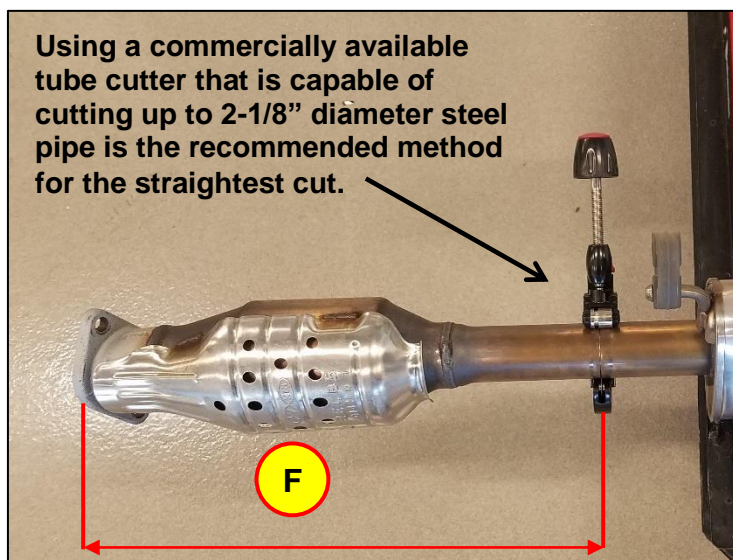
- Cut the center muffler pipe perpendicular to the front dent (B) cutting point.
  - Retain the cut portion with the catalyst (F) to be reused with the new center muffler.

**NOTICE**

Mark the circumference of the pipe and cut the pipe by using a pipe cutter (D), a hack saw (E), or equivalent.



Using a commercially available tube cutter that is capable of cutting up to 2-1/8" diameter steel pipe is the recommended method for the straightest cut.



4. Debur the cut edge of the pipe at the rear portion of the catalyst (F) using a metal file.

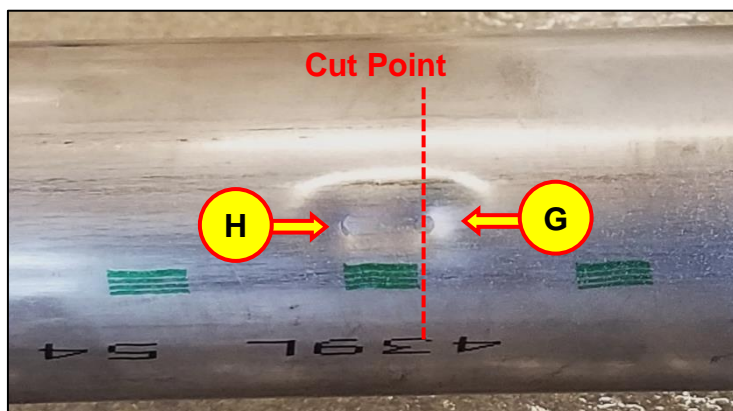


**NOTICE**

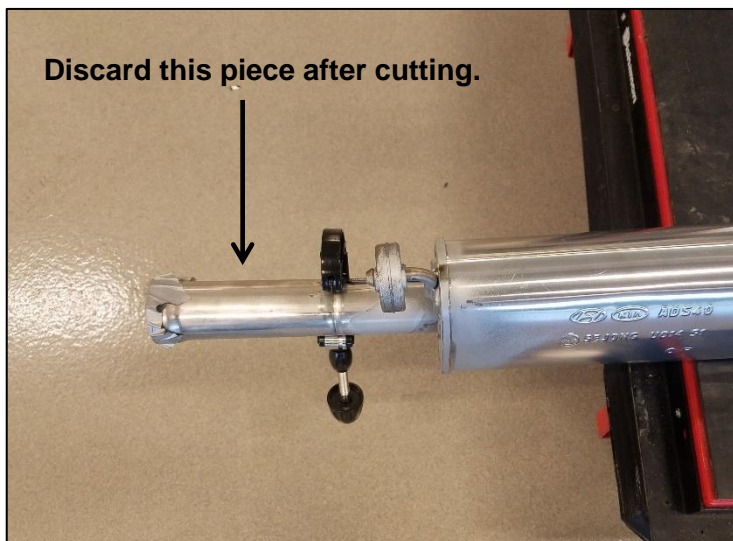
**Do not allow any foreign material to enter inside the catalyst pipe.**



5. Locate the front dent (H) and rear dent (G) of the new replacement campaign center muffler pipe for **cutting at rear dent point (G)**.



6. Cut the new replacement center muffler pipe perpendicular to the rear dent (G) cutting point.
- Discard the short cut off portion of the new center muffler.
  - Debur the cut edge of the pipe at the front portion of the replacement center muffler pipe.



Layout of the catalyst (F), shortened new replacement center muffler assembly (I), and clamp (J).

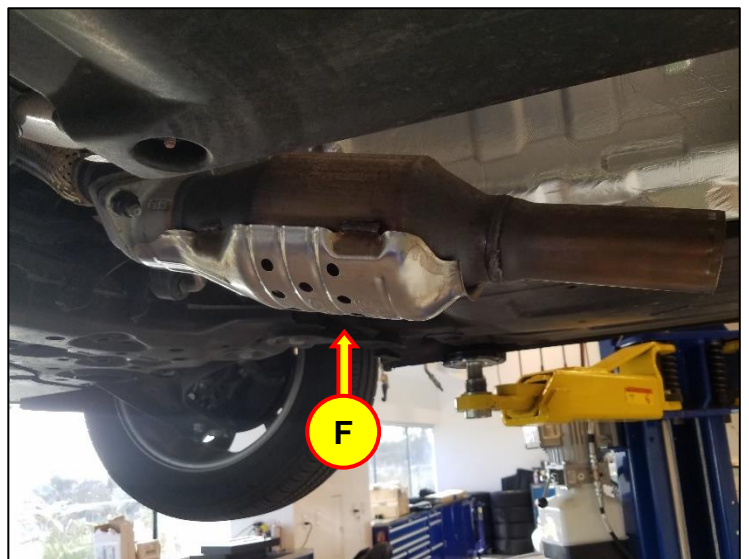


**NOTICE**

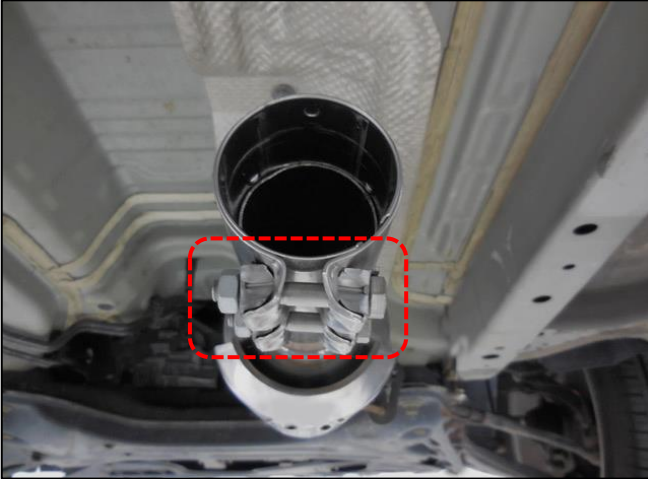
Remove any sticker labels and protective covering tape from the new replacement center muffler assembly prior to installation.



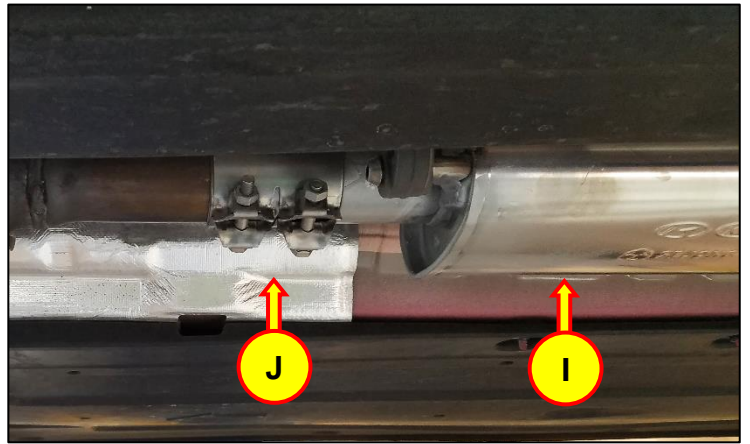
7. Reuse the front flange gasket and install the catalyst (F), then temporarily hand tighten the flange nuts.



8. Install the clamp (J) to the catalyst pipe with the clamp bolts facing horizontally.

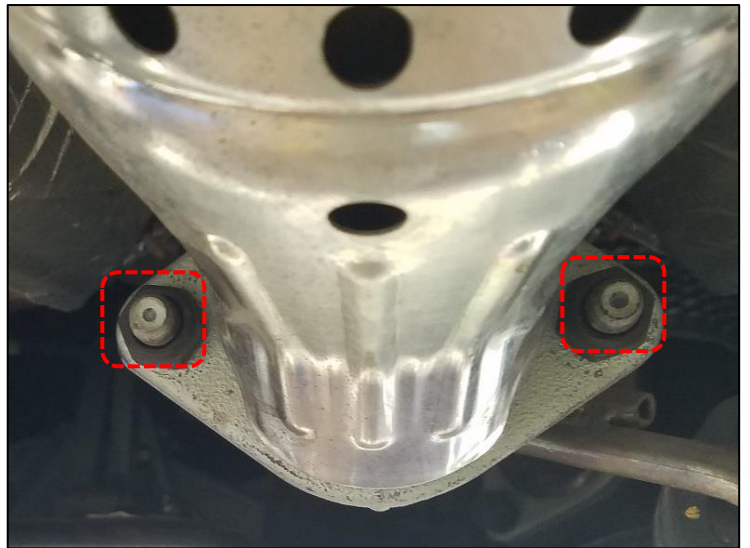


9. Reuse the rear flange gasket and install the new replacement center muffler (I) to the clamp (J), then temporarily hand tighten the flange nuts.



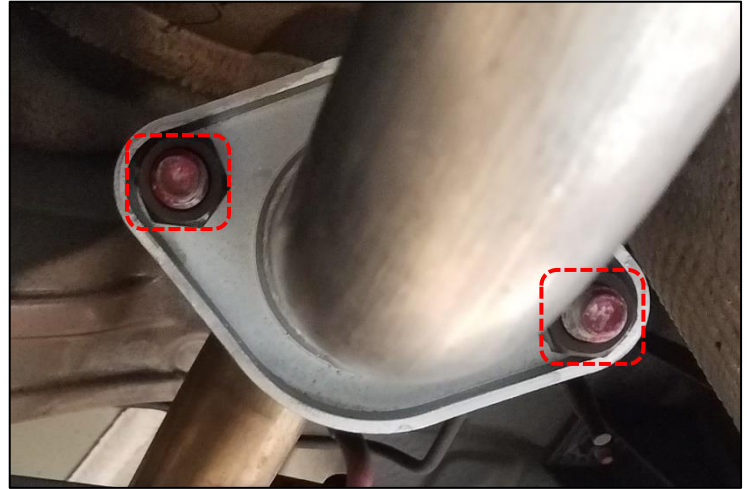
10. Tighten the front flange mounting fasteners of the center muffler catalyst.

- **Tightening torque: 49 Nm (36 lb-ft)**



11. Tighten the rear flange mounting fasteners of the center muffler pipe.

- **Tightening torque: 49 Nm (36 lb-ft)**

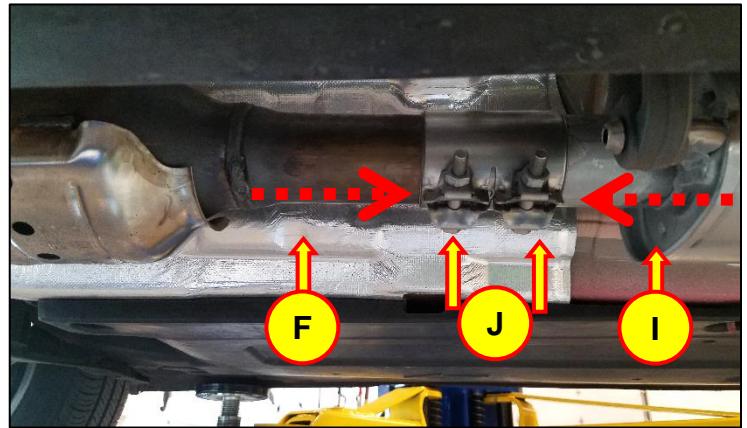


12. After making sure that the two cut ends of the pipes are butted together inside the clamp:
- Slide and hold the clamp (J) towards the catalyst (F) while initially tightening the front clamp fastener.
  - Slide and hold the center muffler pipe (I) towards the clamp (J) while initially tightening the rear clamp fastener.

- **Final tightening torque: 22 Nm (16 lb-ft)**

### NOTICE

This clamp forms a crush type seal to the pipes and therefore it cannot be reused after tightening.



13. Verify repair.

- **Elantra (AD):** Check that there is approximately  $1 \frac{7}{8}$ " of clearance between the rear bumper cover inner edge and the exhaust tip.
- **Elantra GT (PD):** Check that there is approximately  $3 \frac{3}{8}$ " of clearance between the rear bumper cover outer edge and the exhaust tip.
- Operate the engine briefly to confirm that there is no exhaust leak and/or exhaust noise from the clamped pipe areas.

