



**No.: 20CSA-03**  
February 19, 2020

TO: Service Locations  
FROM: Service Diagnostics and Tools  
SUBJECT: **Release of DiagnosticLink® 8.11 Service Pack 2**

### **SUBJECT DETAIL**

On Thursday, February 20, 2020, Service Pack (SP) 2 for DiagnosticLink® 8.11 Standard and Professional will be available for download from the Detroit Diesel server. This update includes the following:

- Resolves an issue where after reprogramming medium duty DD5/DD8 controllers with DiagnosticLink® 8.11, the unit will not Regen.
- Includes the APS3 calibration panel to support sensor-offset mitigation.

**IMPORTANT NOTE:** You must have DiagnosticLink 8.11 Standard or Professional to receive SP2.

**DiagnosticLink 8.10** and earlier versions will not receive this service pack.

On Thursday, November 21, 2019, the DiagnosticLink 8.11 software tool was released to the service network. In order to maintain access to the Detroit server data, all Master Reprogramming Stations must be kept updated with the current version of DiagnosticLink software to avoid any interruptions.

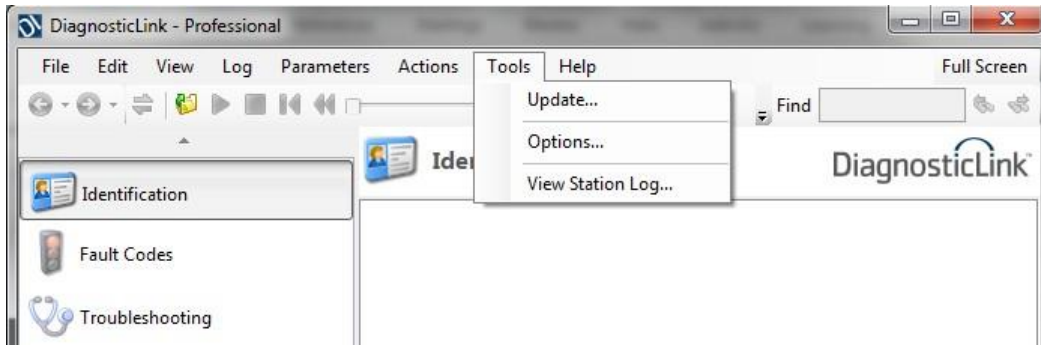
### **UPDATE INSTRUCTIONS**

**NOTE:** You must have DiagnosticLink 8.11 installed on your computer prior to applying this patch.

SP1 will automatically download when you connect to the DDC server. Please do the following:

1. Open DiagnosticLink software.

2. From the **Tools** drop-down menu, select **Update....**



3. A screen will display showing the progress of the download. Follow the installation prompts to complete the download.
4. Verify that the patch has been applied by selecting **About** from the **Help** dropdown menu. Verify the following:

**Application Components**  
DiagnosticLink **08.11SP2-xxxxx-xxxxx**

## MANUAL UPDATE

A link is available to manually download and install the DiagnosticLink 8.11 SP2 patch for advanced users and system administrators. To access, login to <https://dtnacontent-dtna.prd.freightliner.com> and proceed to secure content. Expand **Tools & Services** and select **Service Diagnostics & Tools**. Open the **DiagnosticLink** page and proceed to the download section.

## CONTACT INFORMATION

Please contact the Detroit Customer Support Center at 800-445-1980 or email [csc.software@daimler.com](mailto:csc.software@daimler.com) if you have any questions.