



Thor Motor Coach Technical Service Bulletin

TSB #	TSB 20-03		
Description/Title:	Truss Support Bolts		
Affected Product Line(s):	Certain Model Year 2020 Delano/Tiburon 24R Motorhomes		
Service Campaign # :	RC000183	Released Date:	2/24/2020
Repair Codes:	Repair: TMCTS80259W	Document Date:	2/24/2020
Time Allowed:	Repair: 1.0 hr.	Document Revision:	A

Issue:

Certain model year 2020 Delano/Tiburon 24R Motorhomes are missing the bolts for the truss support at the center of the floor. The result of the missing bolt can lead to a floor squeak.

Part(s) Required:

- Three (3) ½” x 1 ½” grade 8 FHCS Hex Flange & Lock Nut *
**If motorhome is a stock unit, parts will be shipped to you directly to complete repair.
If motorhome is retail sold, please contact Recalls@TMCRV.com to request parts shipped to complete repair.*



Tools Required:

- Impact gun with socket capable of torques up to 45 to 62 foot pounds or torque wrench & socket extension.
- Screwdriver

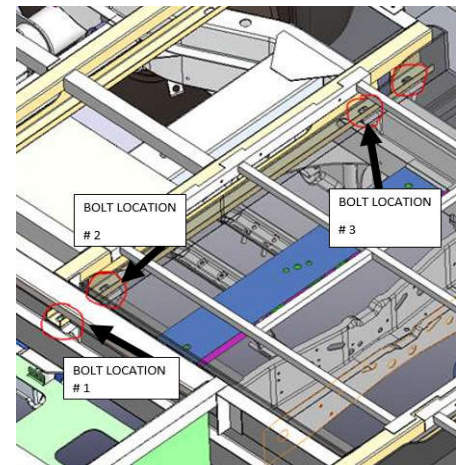
Instructions:

Note: If using a hoist, block the tires.

1. Turn each lock nut onto the bolt, turning all the way to assure there is no cross threading on the hex nut of bolt.



2. Review the three bolt locations in the diagram below (back of battery box).



3. Installing bolt and hex nut to bolt location #1: Remove battery and battery cable from house battery box.



4. Looking at the bolt location, insert the bolt into the location and reach under to attach the lock nut.

Note: You may be able to tighten the lock nut using an impact gun or torque wrench, if not reachable then the lock nut will be torqued while torqueing #2 location and # 3 location bolts.



5. Install the battery back into place and secure all cables to the appropriate battery post.
6. (optional) Raise the coach on a hoist or another method to ease installation under the coach.

7. At #2 bolt location, under the coach inside the chassis rail, you will see a circular round hole punched on the truss. You may see some foam insulation, if so using a screw driver, you can easily remove the insulation.

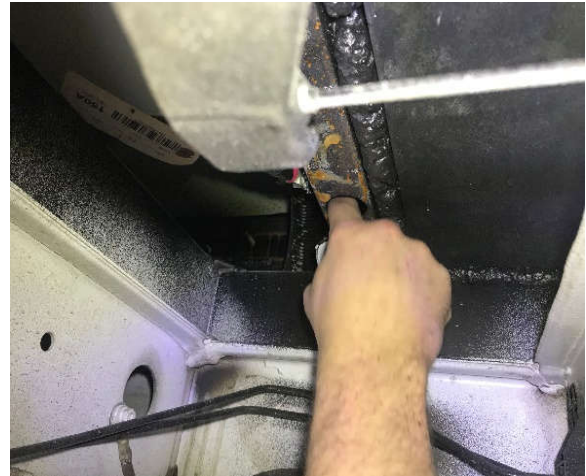


8. Carefully put the hex nut into the circular hole

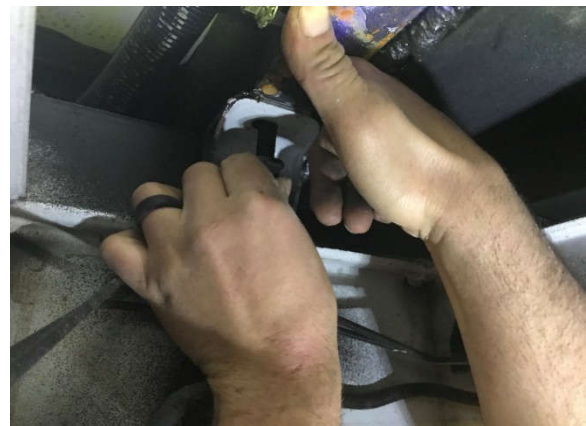


BRACKET

- Using your index finger, push the hex nut aligning with the oval hole on the bracket



- While holding the hex nut inside the truss, use your other hand and align with the oval opening in the bracket, carefully start tightening the bolt as much as possible.



- Repeat for # 3 bolt location.

- Using an impact gun or torque wrench with a socket extension, torque bolt locations #2 & #3 (and #1 if not completed) to the correct torque specification.

