



SIB 61 21 19

2020-01-03

SERVICE ACTION: INSPECT AND REWORK ENGINE COMPARTMENT WIRING HARNESS

Please perform the procedure outlined in this Service Information on all affected vehicles before customer delivery. In the event the customer has already taken delivery of the vehicle, please perform the procedure the next time the vehicle is in the shop.

MODEL

E-Series	Model Description	Production Date
G20	3 Series Sedan	October 24 th , 2018 – March 19 th , 2019

AFFECTED VEHICLES

Vehicles which require this Service Action to be completed will show it as “Open” when checked either in AIR, the "Service Menu" of DCSnet (Dealer Communication System) or with the Key Reader.

SITUATION

Depending on the severity of the wiring damage, this can lead to a multitude of electrical malfunctions and indicator lights on the Instrument Cluster (KOMBI) or Central Information Display (CID).

CAUSE

It is possible that the wiring harness may be damaged even if routed correctly. This is due to-

- The confined mounting position of the affected engine wiring harness in combination with the component tolerances
- Sharp-edged components in the vicinity of the wiring harness

CORRECTION

Inspect and rework the engine wiring harness by the dual storage battery compartment as noted in the Procedure section.

PROCEDURE



1. Remove the Dual Storage Battery Holder by following the instructions on the Attachment “**Removal of the Dual Storage Battery Holder**”

Check the wiring harness in the marked area for damage and repair as described below.



2. If no damage is found, as shown on the picture, proceed to **Step 3**.



3. Wrap the wiring harness cable with abrasion protection hose, and secure it with cable straps.

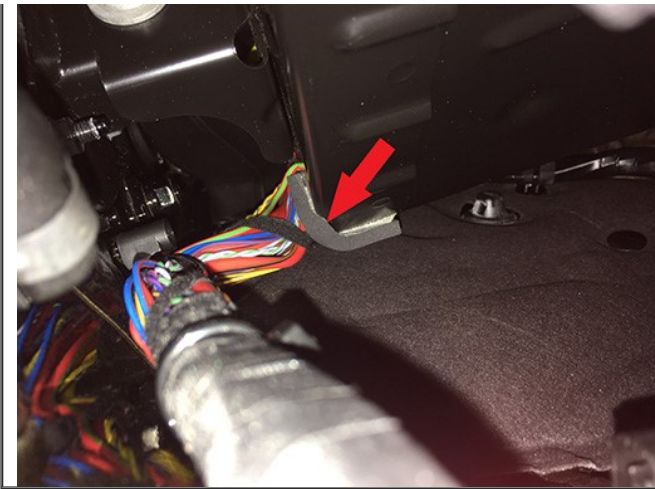


- Relocate the wiring harness by pushing it towards the body, to provide better clearance.

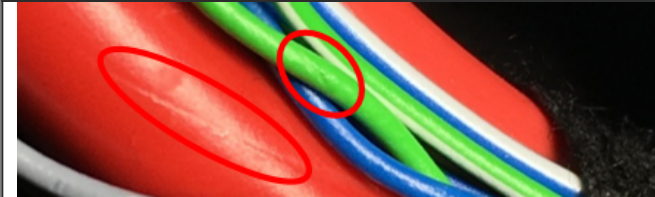


- Install a foam pad on the lower left front corner (arrow) of the battery holder.

- Foam shown properly installed on the vehicle, by looking down the front left side of the battery holder, next to the wiring harness.

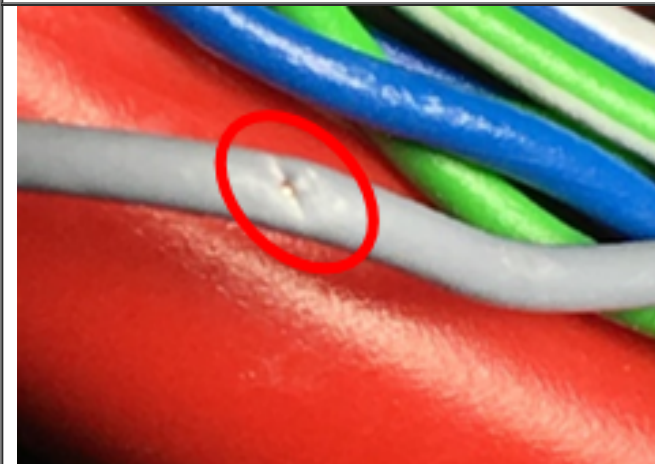


NO FURTHER ACTION NEEDED.



4. If wiring harness insulation shows damaged/ chafe marks visible on insulation, but no copper strands are visible.

- Wrap the damaged single strand with insulating tape, and perform **Step 3**.



5. If the copper strands are already visible or the insulation shows severe damage.

- Repair the single strand with butt connectors (Refer to REP 6111 "Wiring harness repair"), and perform **Step 3**.



(Example of severe insulation and wiring damage)

PARTS INFORMATION

PLEASE REFER TO THE BMW PARTS MATRIX FOR PARTS INFORMATION.

Only use and invoice the specific part numbers identified below.

Performing a part number look-up in ETK (EPC) by VIN or model in place of using/invoicing the following part numbers may result with the wrong part number(s) being invoiced and installed, this could delay the payment of claim.

Part Number:	Description:	Quantity:
61 13 9 262 542	Abrasion protection	1
16 11 1 182 585	Pad 35mm x45 mm	2
61 13 8 727 251	*Butt connector with heat-shrink tubing 0.17-0.5 mm ²	As required
61 13 8 727 252	*Butt connector with heat-shrink tubing 0.5-1.5 mm ²	As required
61 13 8 727 250	*Butt connector with heat-shrink tubing 1.5-2.5 mm ²	As required
61 13 8 727 249	*Butt connector with heat-shrink tubing 3.5-6.0 mm ²	As required
61 13 8 383 722	*Cable strap length 200 mm / width 4.6 mm	As required
07 14 7 483 888	Hex Bolt	4 (only vehicles with strut brace)
07 11 9 905 147	Hex Bolt with washer	4 (only vehicles with strut brace)

Note:

Additionally, other small parts that are not specified above, such as one-time use screws, nuts and seals, which must be replaced according to the ISTA repair instructions/ETK, must be selected from the Electronic Parts Catalogue according to the respective vehicle type and invoiced under the special defect code.

*Single quantity Dealer Net price/pre-pack quantity item

WARRANTY INFORMATION

Reimbursement for this Service Action will be via normal claim entry utilizing the following information:

Defect Code:	0061260500	G20 Re-laying the engine compartment wiring harness
---------------------	-------------------	--

Completion before the first vehicle delivery to a customer or the vehicle is already in the workshop.

Work Pkg	Labor Operation	Description (Plus Work)	Labor Allowance
# 1	00 68 651	Check wiring harness for damage and re-lay with abrasion protection.	Refer to AIR
Or:			
# 2	00 68 695	Check wiring harness for damage, repair (up to 5 wires) and re-lay with abrasion protection.	Refer to AIR
Or:			
# 3	00 68 698	Check wiring harness for damage, repair (6 to 10 wires) and re-lay with abrasion protection.	Refer to AIR
If applicable:	00 68 785	Additional work on vehicles with strut brace	8 FRU

Or:

The vehicle arrives at your center and this Service Action Campaign shows open (No other Main work will be performed/claimed during this workshop visit)

Work Pkg	Labor Operation	Description (Main work)	Labor Allowance
# 4	00 68 116	Check wiring harness for damage and re-lay with abrasion protection.	Refer to AIR
Or:			
# 5	00 68 144	Check wiring harness for damage, repair (up to 5 wires) and re-lay with abrasion protection.	Refer to AIR
Or:			
# 6	00 68 145	Check wiring harness for damage, repair (6 to 10 wires) and re-lay with abrasion protection.	Refer to AIR
If applicable:	00 68 785	Additional work on vehicles with strut brace	8 FRU

Claim Repair Comments

Only reference the SIB number and the work package (Pkg) number performed in the RO technician notes and in the claim comments (For example: B61 21 19 WP 1), unless otherwise required by State law.

And, as applicable:

Alternative Mobility Solution (AMS) for Vehicle Owners (RO and Claim Comments Required)

This Service Action repair qualifies for Alternative Mobility Solution (AMS) expense reimbursement, claim this item under the Defect Code noted above as follows:

- Sublet Code 2 - Itemize the AMS sublet amount on the repair order and in the claim comment section.

Please refer to [SI B01 29 16](#) for additional information.

Supporting Materials

[picture_as_pdf B61 21 19 Attachment \(Removal of the Dual Storage Battery Holder\).pdf](#)

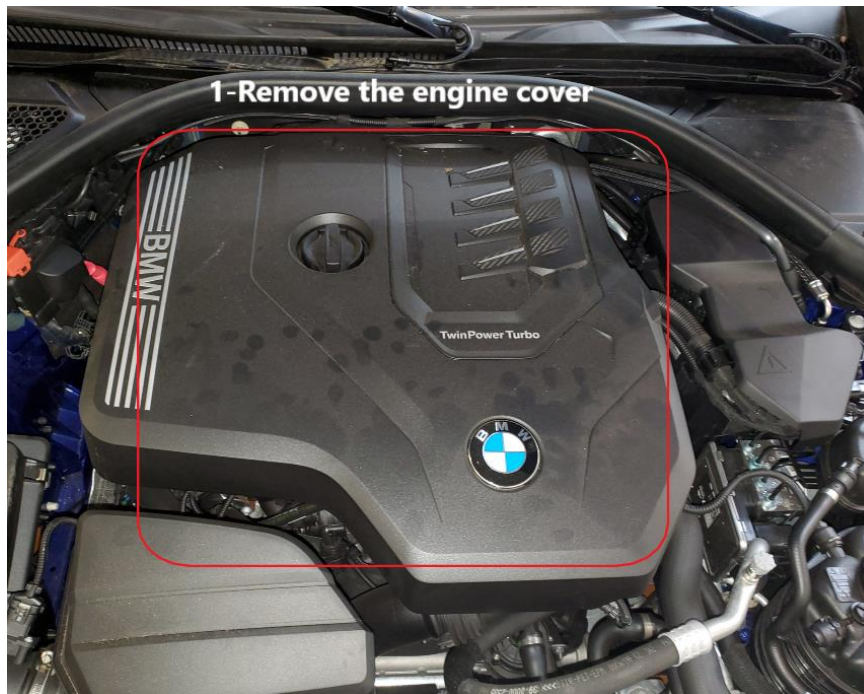
Dual Storage battery holder Removal.

- **Vehicles equipped with strut braces-**

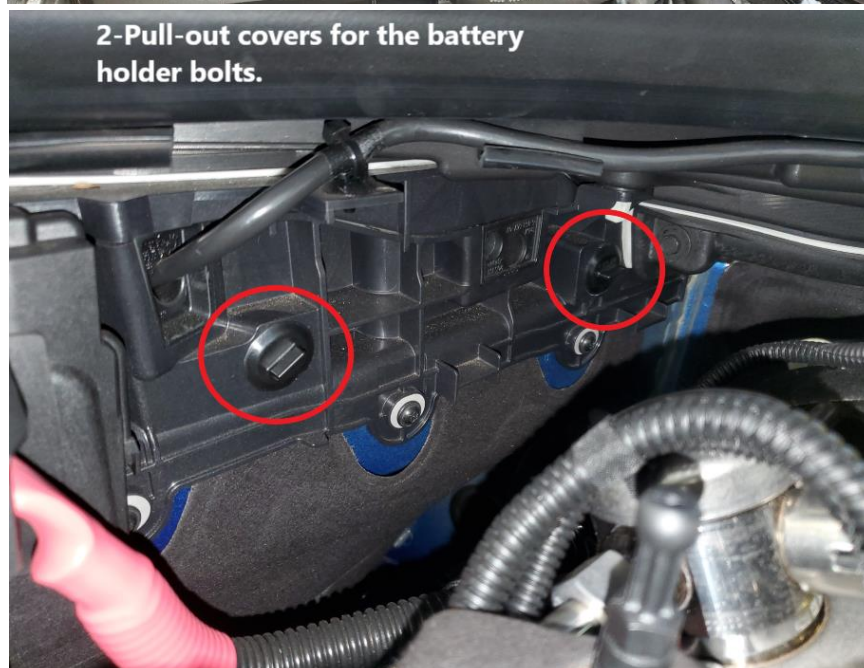
Remove one or both strut braces per REP 51 71 341 depending on vehicle equipment, then follow instructions below.

- **Vehicles without strut braces- Follow the instructions below:**

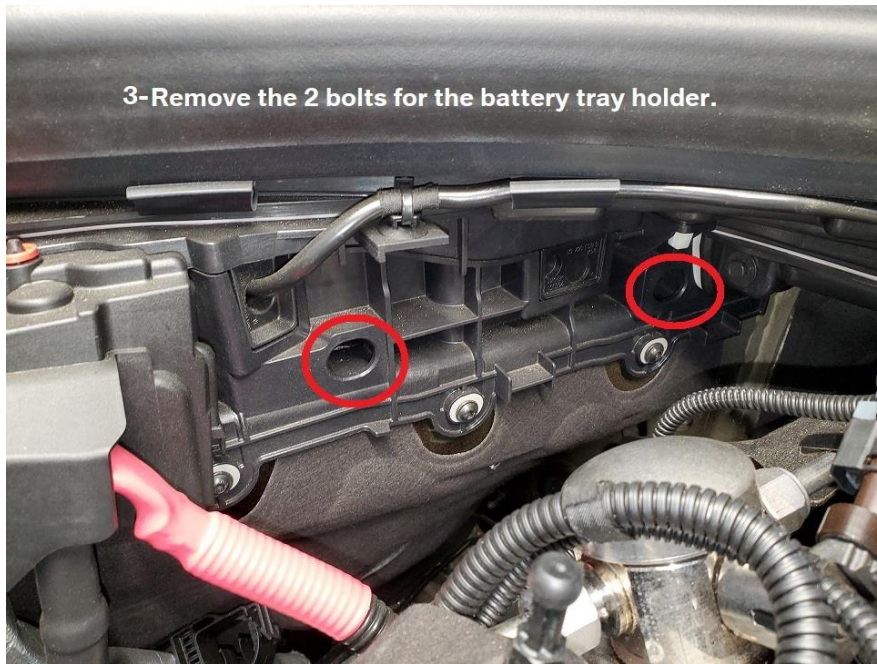
1.



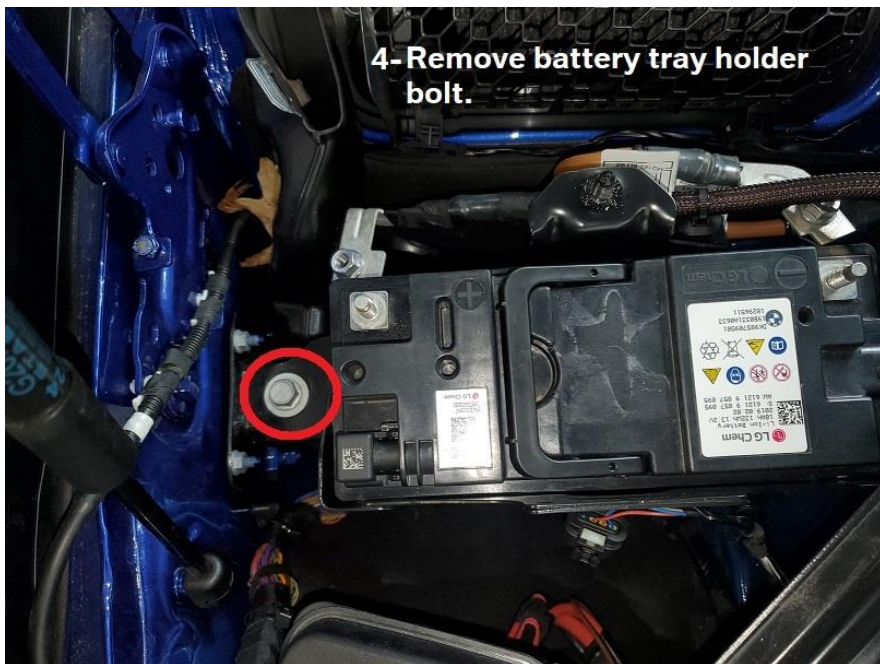
2.



3.



4.



5. Follow REP 61 21 003 "Remove the dual storage battery".

6. Remove the Battery tray holder upwards.

7. Perform wiring harness inspection as per SIB 61 21 19.

Note: On vehicles equipped with Strut Braces, do not attempt to remove the battery holder with the Strut Brace installed. Risk of wiring damage may occur.