



SIB 51 03 20

WATER RUNS OUT OF DRIVER'S DOOR WHEN OPENING

## MODEL

E-Series	Model Description
G29	Z4 Roadster

## SITUATION

If the vehicle is parked on an incline (front higher than the rear), water may not be able to flow out of the door. Upon opening the door, water may flow out rapidly. The collected water does not run inside the car.

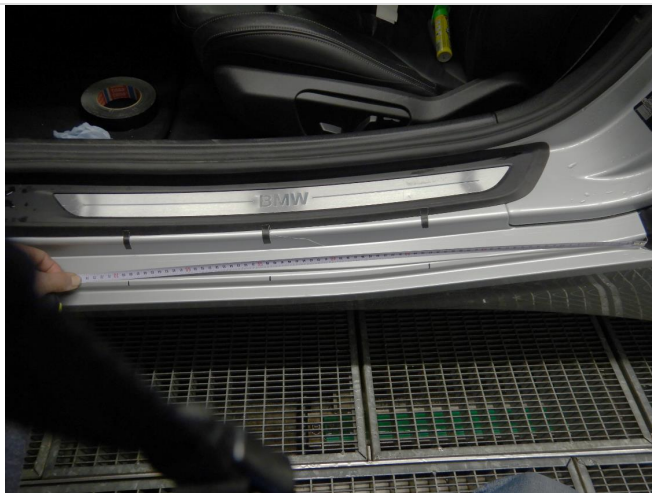
## CAUSE

The door seal creates such a tight seal, that water can't flow from the door.

## CORRECTION

Rework the door seals to allow for proper drainage.

## PROCEDURE



1. Starting at the rear of the door opening as shown, begin measuring towards the front of the vehicle.

Place masking tape at 270 mm, 490 mm, and 685 mm.

Over the masking tape, mark the exact measurements using a marker.



2. Use chalk to mark the location on the sloped edge of the rocker panel as shown to the left.

3. Remove the door seal by unclipping the seal from the door.

4. For the following steps, use a conical grindstone or similar cutting tool as shown to the left.



**Do not use a drill bit.**



5. Drill three 5 mm holes into the door seal in the locations indicated by chalk.

Note: Do not drill completely through both sides of the seal. Drill only through one side as to create a hole into the center channel of the seal.

**3 additional holes will be drilled in the next steps.**



6. From the rearmost hole made in step 4, measure 20 mm **forwards** and mark the seal on the side which faces **down** when installed in the vehicle.

Drill one hole at this location through one side of the seal. Do not drill completely through both sides.

7. From the middle hole made in step 4, measure 20 mm **towards the rear** and mark the seal on the side which faces **down** when installed in the vehicle.

Drill one hole at this location through one side of the seal. Do not drill completely through both sides.

8. From the forward most hole made in step 4, measure 20mm **towards the front** and mark the seal on the side which faces **down** when installed in the vehicle.

Drill one hole at this location through one side of the seal. Do not drill completely through both sides.

9. Reassemble the vehicle.

## [PARTS INFORMATION](#)

Parts are not required for this repair.

## **WARRANTY INFORMATION**

Covered under the terms of the BMW New Vehicle Limited Warranty for Passenger Cars and Light Trucks.

<b>Defect Code:</b>	<b>5171004800</b>	<b>Seal, front door Not leaktight</b>
<b>Labor Operation</b>	<b>Description</b>	<b>Labor Allowance</b>
51 00 001	Work time to rework the door seal on the driver's side (Main work)	8 FRU
Or:		
51 00 001	Work time to rework the door seal on the driver's side (Plus work)	6 FRU