

# DTC C1AAE and/or Forward Recognition Hood Damage From Aftermarket Parts

**Service Category** Vehicle Interior

**Section** Pre-Collision Safety

**Market** USA

Toyota Supports  
 ASE Certification 

## Applicability

YEAR(S)	MODEL(S)	ADDITIONAL INFORMATION
2018 - 2020	Camry, Camry HV	

## Introduction

Some 2018 – 2020 model year Camry and Camry Hybrid vehicles may exhibit one or more of the following conditions:

- Diagnostic Trouble Code (DTC) C1AAE is displayed.
- A camera malfunction error message is displayed on the Multi-display Unit and/or hood damage from aftermarket parts is exhibited.

These conditions may be caused by an aftermarket forward recognition hood also known as a camera heater. Follow the Repair Procedure in this bulletin to address these conditions.

## Warranty Information

OP CODE	DESCRIPTION	TIME	OFF	T1	T2
N/A	Not Applicable to Warranty	–	–	–	–

## DTC C1AAE and/or Forward Recognition Hood Damage From Aftermarket Parts

### Required Tools & Equipment

REQUIRED EQUIPMENT	SUPPLIER	PART NUMBER	QTY
Techstream ADVi*	ADE	TSADVUNIT	1
Techstream 2.0		TS2UNIT	
Techstream Lite		TSLITEPDLR01	
Techstream Lite (Green Cable)		TSLP2DLR01	

\*Essential SST.

#### NOTE

- Only ONE of the Techstream units listed above is required.
- Software version 14.30.022 or later is required.
- Additional Techstream units may be ordered by calling Approved Dealer Equipment (ADE) at 1-800-368-6787.

### Repair Procedure

1. Confirm one or more of the following conditions exist:
  - DTC C1AAE is displayed
  - A camera malfunction error message is displayed on the Multi-display Unit and/or forward recognition hood damage from aftermarket parts is exhibited

Does the vehicle exhibit ANY of the conditions listed above?

  - **YES** — Continue to step 2.
  - **NO** — This bulletin does NOT apply. Continue diagnosis using the applicable Repair Manual.

**DTC C1AAE and/or Forward Recognition Hood Damage From Aftermarket Parts**

**Repair Procedure (continued)**

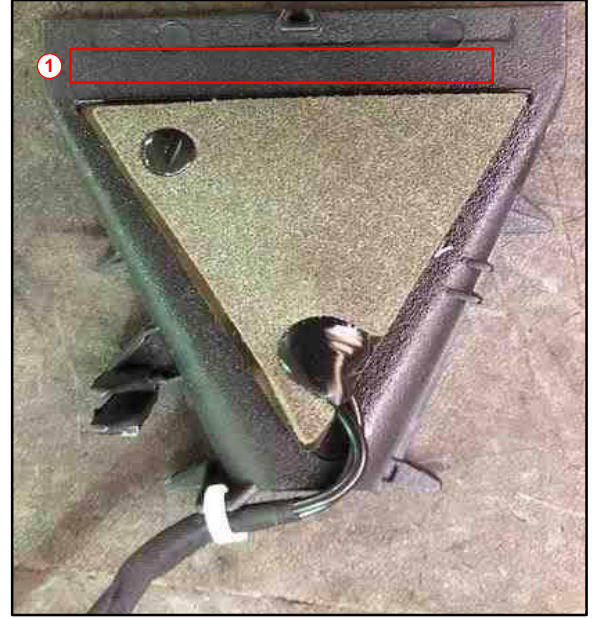
2. Confirm the forward recognition hood is Toyota genuine.  
Toyota genuine hoods will display a Toyota part number as shown in Figure 1.

**Figure 1. Toyota Forward Recognition Hood**



<b>1</b>	Toyota Part Number (86461 – #####)
----------	------------------------------------

**Figure 2. Aftermarket Forward Recognition Hood**



<b>1</b>	Missing Toyota Part Number
----------	----------------------------

Is the forward recognition hood Toyota genuine?

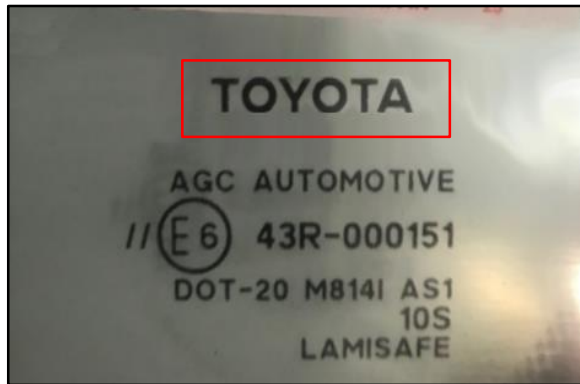
- **YES** — This bulletin does NOT apply. Continue diagnosis using the applicable Repair Manual.
- **NO** — Continue to step 3.

## DTC C1AAE and/or Forward Recognition Hood Damage From Aftermarket Parts

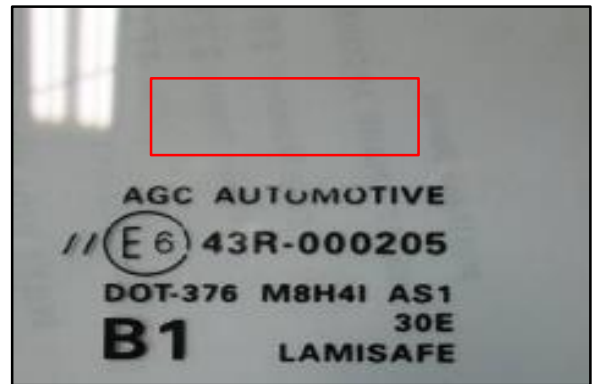
### Repair Procedure (continued)

3. Confirm the windshield is Toyota genuine.  
Toyota genuine windshields will display a Toyota logo as shown in Figure 3.

**Figure 3. Toyota Genuine Windshield**



**Figure 4. Aftermarket Windshield**



Is the windshield Toyota genuine?

- **YES** — Go to step 5.
- **NO** — Continue to step 4.

4. Replace the windshield.

**NOTICE**

**It is strongly recommended that the windshield be replaced with a Toyota Genuine Windshield. Aftermarket windshields may not work correctly with the vehicle's pre-collision system.**

- A. Remove the windshield.

Refer to TIS, applicable model and model year Repair Manual:

- [2018](#), [2019](#), [2020](#) Camry:  
*Vehicle Exterior – Window / Glass – “Window / Glass: Windshield Glass: Removal”*
- [2018](#), [2019](#), [2020](#) Camry HV:  
*Vehicle Exterior – Window / Glass – “Window / Glass: Windshield Glass: Removal”*

- B. Install the NEW windshield.

- [2018](#), [2019](#), [2020](#) Camry:  
*Vehicle Exterior – Window / Glass – “Window / Glass: Windshield Glass: Installation”*
- [2018](#), [2019](#), [2020](#) Camry HV:  
*Vehicle Exterior – Window / Glass – “Window / Glass: Windshield Glass: Installation”*

## DTC C1AAE and/or Forward Recognition Hood Damage From Aftermarket Parts

---

### Repair Procedure (continued)

5. Replace the forward recognition hood.

A. Remove the forward recognition hood.

Refer to TIS, applicable model and model year Repair Manual:

- 2018 – 2020 Camry:  
*Engine / Hybrid System – Cruise Control – “[Cruise Control: Camera Heater: Removal](#)”*
- 2018 – 2020 Camry HV:  
*Engine / Hybrid System – Cruise Control – “[Cruise Control: Camera Heater: Removal](#)”*

B. Install the NEW forward recognition hood.

Refer to TIS, applicable model and model year Repair Manual:

- 2018 – 2020 Camry:  
*Engine / Hybrid System – Cruise Control – “[Cruise Control: Camera Heater: Installation](#)”*
- 2018 – 2020 Camry HV:  
*Engine / Hybrid System – Cruise Control – “[Cruise Control: Camera Heater: Installation](#)”*

**NOTE**

If you have ordered a Toyota genuine windshield that comes with a forward recognition hood, please skip this step.

It is also strongly recommended that the forward recognition hood be replaced with a Toyota genuine forward recognition hood. Aftermarket forward recognition hoods may cause DTCs.