

# Instrument Panel (Dashboard) and Door Panels Sticky/Cracked

**Service Category** Vehicle Interior

**Section** Interior Panels/Trim

**Market** USA

Lexus Supports  
ASE Certification 

## Applicability

YEAR(S)	MODEL(S)	ADDITIONAL INFORMATION
2008 - 2014	IS F, LS600H	
2006 - 2013	IS250, IS350	
2010 - 2015	IS250C, IS350C	
2007 - 2013	LS460	

### REVISION NOTICE

January 15, 2020 Rev1:

- The Warranty Information and Repair Procedure sections have been updated.
- Any previous printed versions of this bulletin should be discarded.

### SUPERSESION NOTICE

The information contained in this bulletin supersedes Service Bulletin No. L-SB-0041-15.

- Applicability has been updated to exclude 2007 model year LS600h vehicles.
  - The Repair Procedure section has been updated.
- Service Bulletin No. L-SB-0041-15 is obsolete and any printed versions should be discarded.

## Introduction

Some 2006 – 2015 model year Lexus vehicles may exhibit a condition where any of the following components become sticky and/or cracked.

- Dashboard/instrument panel
- Interior door trim panels (front and rear)
- IP Lower (No. 1)
- Center console box
- Center console RR
- Glove compartment

Follow the Repair Procedure in this bulletin to address this condition.

## Instrument Panel (Dashboard) and Door Panels Sticky/Cracked

### Production Change Information

This bulletin applies to vehicles produced **BEFORE** the Production Change Effective VINs shown below.

- 2010 – 2015 IS C vehicles produced **BEFORE** the Production Change Effective VINs shown below.
- 2006 – 2013 IS250/IS350 vehicles produced **BEFORE** the Production Change Effective VINs shown below.
- 2008 – 2014 IS F vehicles produced **BEFORE** the Production Change Effective VINs shown below.
- 2007 – 2012 LS460 vehicles produced **BEFORE** the Production Change Effective VINs shown below.
- 2008 – 2010 LS600h vehicles produced **BEFORE** the Production Change Effective VINs shown below.

**Table 1. Dashboard and Door Panels**

MODEL	PLANT	KEY FRAME CODE	ENGINE TYPE	PRODUCTION CHANGE EFFECTIVE VIN
IS C	TMK	GSE20	4GR-FSE	JTHFF2C2#F2533646
		GSE21	2GR-FSE	JTHFE2C2#F2511736
IS250	TMK	GSE20	4GR-FSE	JTHBF5C2#D2103197
		GSE25		JTHCF5C2#D2036074
	Tahara 3E	GSE20		JTHBF5C2#D5193684
		GSE25		JTHCF5C2#D5064017
IS350	TMK	GSE21	2GR-FSE	JTHBE5C2#A2017712
	Tahara 3E	GSE21		JTHBE5C2#D5032065
		GSE26		JTHCE5C2#D5003209
IS F		USE20	2UR-GSE	JTHBP5C2#E5011572
LS460	Tahara 3/1A	USF40	1UR-FSE	JTHBL5EF#C5113810
		USF41		JTHGL1EF#C5046794
		USF45		JTHCL5EF#C5015488
		USF46		JTHDL5EF#C5004825
LS600h		UVF46	2UR-FSE	JTHDU1EF#A5013225

## Instrument Panel (Dashboard) and Door Panels Sticky/Cracked

---

### Production Change Information (continued)

**Table 2. Console Box and IP No. 1**

MODEL	PLANT	KEY FRAME CODE	ENGINE TYPE	PRODUCTION CHANGE EFFECTIVE VIN
LS460	Tahara 3/1A	USF40	1UR-FSE	JTHBL5EF#D5124954
		USF41		JTHGL5EF#D5050828
		USF45		JTHCL5EF#D5019597
		USF46		JTHDL1EF#D5006108
LS600h		UVF46	2UR-FSE	JTHDU46F#85002883

**Table 3. Glove Compartment**

MODEL	PLANT	KEY FRAME CODE	ENGINE TYPE	PRODUCTION CHANGE EFFECTIVE VIN
LS460	Tahara 3/1A	USF40	1UR-FSE	JTHBL5EF#C5113810
		USF41		JTHGL1EF#C5046794
		USF45		JTHCL5EF#C5015488
		USF46		JTHDL5EF#C5004825
LS600h		UVF46	2UR-FSE	JTHDU46F#85002883

**Table 4. Console Box RR**

MODEL	PLANT	KEY FRAME CODE	ENGINE TYPE	PRODUCTION CHANGE EFFECTIVE VIN
LS460	Tahara 3/1A	USF40	1UR-FSE	JTHBL5EF#D5124954
		USF41		JTHGL5EF#D5050828
		USF45		JTHCL5EF#D5019597
		USF46		JTHDL1EF#D5006108
LS600h		UVF46	2UR-FSE	JTHDU1EF#E5017461

## Instrument Panel (Dashboard) and Door Panels Sticky/Cracked

### Warranty Information

OP CODE	DESCRIPTION	MODEL	MODEL YEAR	TIME	OFF	T1	T2		
550351	R & R Instrument Panel Safety Pad Sub-Assembly	IS	2006 – 2013	2.0	55400-53906-C0 55400-53906-E0	67	19		
		IS F	2008 – 2014		55400-53906-C0				
		IS C	2010 – 2015		55400-53908-C0				
550101	R & R Glove Compartment	LS	2007 – 2012	3.2	55401-50909-C1 55401-50909-C2 55401-50909-C6 55401-50909-E2 55401-50909-E3 55401-50909-E6				
					0.4			55550-50110-A2 55550-50110-A3 55550-50110-B1 55550-50110-C1 55550-50190-A1 55550-50190-A3 55550-50190-B1 55550-50190-C1 55550-50311-A0 55550-50311-A1 55550-50311-B0 55550-50311-C0	
								0.4	55402-50140-A2 55402-50140-A3 55402-50140-B1 55402-50140-C1 55402-50140-A4
									58903-50###-##
BD1815	R & R Console End Panel Sub-Assy			2007 – 2014				0.3	58903-50###-##
743641	R & R Console Box				1.0			58802-50###-##	
743931	Console Compartment Door				0.3	58905-50###-##			
670301	R & R Panel Assembly, FR Door Trim: One Side			2007 – 2012	0.4	67610-50###-##			
Combo A	R & R Panel Assembly, FR Door Trim: Opposite Side				0.2	67620-50###-##			
670311	R & R Panel Assembly, RR Door Trim: One Side	0.4	67630-50###-## 67630-5A###-##						
Combo A	R & R Panel Assembly, RR Door Trim: Opposite Side	0.3	67640-50###-## 67640-5A###-##						

## Instrument Panel (Dashboard) and Door Panels Sticky/Cracked

### Warranty Information (continued)

OP CODE	DESCRIPTION	MODEL	MODEL YEAR	TIME	OFF	T1	T2
670301	R & R Panel Assembly, FR Door Trim: One Side	IS250, IS350	2006 – 2013	0.3	67610-53###-##	67	19
Combo A	R & R Panel Assembly, FR Door Trim: Opposite Side			0.2	67620-53###-##		
670311	R & R Panel Assembly, RR Door Trim: One Side			0.3	67630-53###-##		
Combo A	R & R Panel Assembly, RR Door Trim: Opposite Side			0.1	67640-53###-##		
670301	R & R Panel Assembly, FR Door Trim: One Side	IS F	2008 – 2014	0.4	67610-53###-C0 67610-53###-C1		
Combo A	R & R Panel Assembly, FR Door Trim: Opposite Side		2008 – 2014	0.2	67620-53###-C0 67620-53###-C1		
670311	R & R Panel Assembly, RR Door Trim: One Side			0.3	67630-53###-C0 67630-53###-C1		
Combo A	R & R Panel Assembly, RR Door Trim: Opposite Side			0.1	67640-53###-C0 67640-53###-C1		
670301	R & R Panel Assembly, Door Trim: One Side	IS C		2010 – 2015	0.3	67610-53###-##	
Combo A	R & R Panel Assembly, Door Trim: Opposite Side		0.1		67620-53###-##		

#### APPLICABLE WARRANTY

- This repair is covered under the Lexus Basic Warranty. This warranty is in effect for 48 months or 50,000 miles, whichever occurs first, from the vehicle's in-service date.
- Warranty application is limited to occurrence of the specified condition described in this bulletin.

### Required Tools & Equipment

SPECIAL SERVICE TOOLS (SST)	PART NUMBER	QTY
Plastic Pry Tool Kit*	<a href="#">00002-06020-02</a>	1

\*Essential SST.

#### NOTE

Additional SSTs may be ordered by calling 1-800-933-8335.

## Instrument Panel (Dashboard) and Door Panels Sticky/Cracked

### Repair Procedure

1. Confirm the condition exists.

Does the dashboard and/or door panel(s) exhibit a sticky and/or cracked appearance?  
(See Figures 1 – 4 for examples of these conditions.)

- **YES** — Continue to step 2.
- **NO** — This bulletin does NOT apply. Continue diagnosis using the applicable Repair Manual.

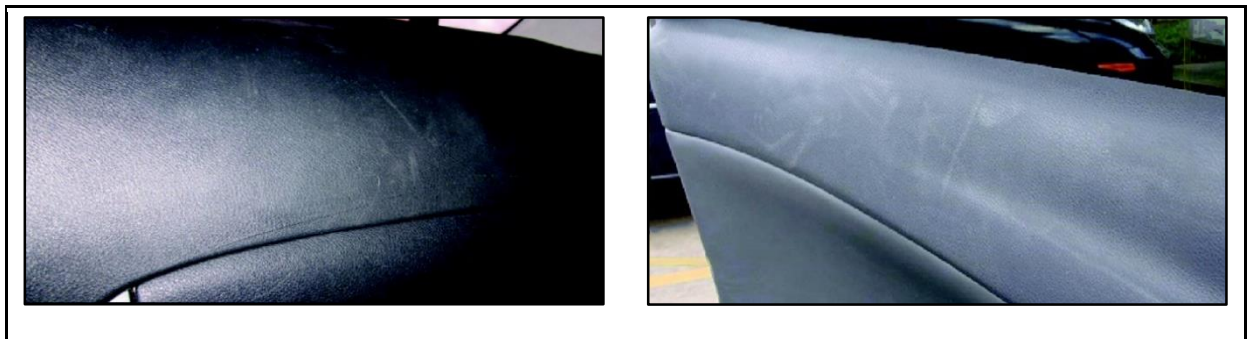
#### NOTE

- When a vehicle with sticky interior panels is parked out of heat and humidity for more than a few hours, the panel surface may become chalky. Once the vehicle is exposed to heat again, the sticky condition may return.
- Interior panels can become sticky over time for a variety of reasons and circumstances. Most vehicles subject to repair under this Service Bulletin have more than likely been operated for extended periods in areas of high temperatures and high humidity.
- In some cases, the interior panels may appear shiny due to aftermarket interior dressing.

**Figure 1. Example of Sticky Condition**



**Figure 2. Example of Chalky Condition (Becomes Sticky in Heat)**



# Instrument Panel (Dashboard) and Door Panels Sticky/Cracked

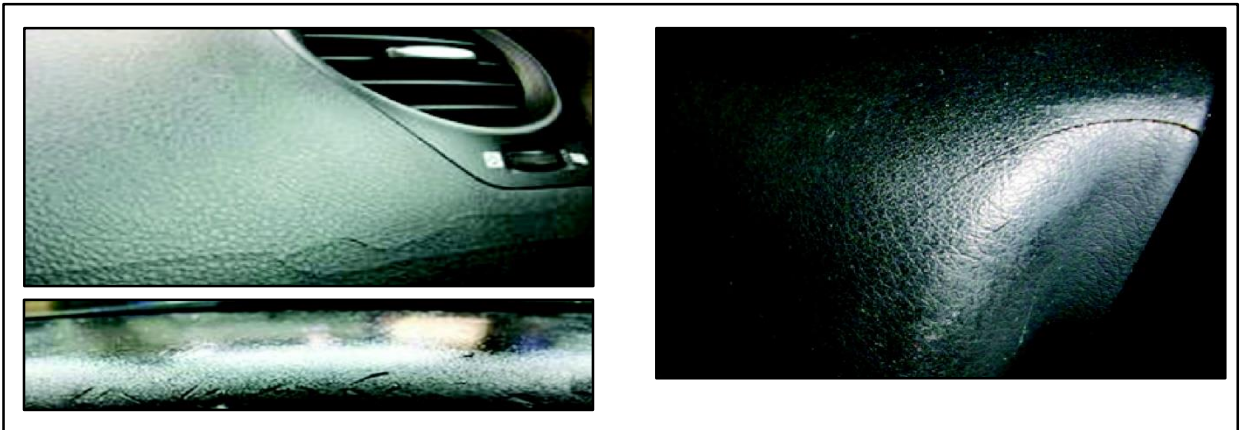
## Repair Procedure (continued)

**Figure 3. Example of Chalky Condition (Becomes Sticky in Heat)**



<b>1</b>	Front of Vehicle
----------	------------------

**Figure 4. Example of Cracked Condition**



## Instrument Panel (Dashboard) and Door Panels Sticky/Cracked

---

### Repair Procedure (continued)

2. Remove the affected panel(s).

A. Remove the instrument panel safety pad assembly (if affected).

Refer to TIS, applicable model and model year Repair Manual:

- [2006](#) / [2007](#) / [2008](#) / [2009](#) / [2010](#) / [2011](#) / [2012](#) / [2013](#) IS250:  
*Vehicle Interior – Interior Panels/Trim – “Instrument Panel: Instrument Panel Safety Pad: Removal”*
- [2010](#) / [2011](#) / [2012](#) / [2013](#) / [2014](#) / [2015](#) IS250C:  
*Vehicle Interior – Interior Panels/Trim – “Interior Panels / Trim: Instrument Panel Safety Pad: Removal”*
- [2006](#) / [2007](#) / [2008](#) / [2009](#) / [2010](#) / [2011](#) / [2012](#) / [2013](#) IS350:  
*Vehicle Interior – Interior Panels/Trim – “Instrument Panel: Instrument Panel Safety Pad: Removal”*
- [2010](#) / [2011](#) / [2012](#) / [2013](#) / [2014](#) / [2015](#) IS350C:  
*Vehicle Interior – Interior Panels/Trim – “Interior Panels / Trim: Instrument Panel Safety Pad: Removal”*
- [2008](#) / [2009](#) / [2010](#) / [2011](#) / [2012](#) / [2013](#) / [2014](#) IS F:  
*Vehicle Interior – Interior Panels/Trim – “Instrument Panel: Instrument Panel Safety Pad: Removal”*
- [2007](#) / [2008](#) / [2009](#) / [2010](#) / [2011](#) / [2012](#) / [2013](#) LS460:  
*Vehicle Interior – Interior Panels/Trim – “Instrument Panel: Instrument Panel Safety Pad: Removal”*
- [2008](#) / [2009](#) / [2010](#) / [2011](#) / [2012](#) / [2013](#) LS600h:  
*Vehicle Interior – Interior Panels/Trim – “Instrument Panel: Instrument Panel Safety Pad: Removal”*



## Instrument Panel (Dashboard) and Door Panels Sticky/Cracked

---

### Repair Procedure (continued)

- B. Remove the front door panel(s) (if affected).

Refer to TIS, applicable model and model year Repair Manual:

**NOTE**

Follow Repair Manual steps 1 – 4.

- [2006](#) / [2007](#) / [2008](#) / [2009](#) / [2010](#) / [2011](#) / [2012](#) / [2013](#) IS250:  
*Vehicle Exterior – Door/Hatch – “Engine Hood / Door: Front Door: Disassembly”*
- [2006](#) / [2007](#) / [2008](#) / [2009](#) / [2010](#) / [2011](#) / [2012](#) / [2013](#) IS350:  
*Vehicle Exterior – Door/Hatch – “Engine Hood / Door: Front Door: Disassembly”*

**NOTE**

Follow Repair Manual steps 3 – 5.

- [2007](#) / [2008](#) / [2010](#) / [2011](#) LS460:  
*Vehicle Exterior - Door/Hatch – “Engine Hood / Door: Front Door: Removal”*
- [2009](#) / [2012](#) LS460:  
*Vehicle Exterior - Door/Hatch – “Exterior: Front Door Belt Moulding: Removal”*

- C. Remove the console box, the compartment door from console box, and install the previous compartment door onto the NEW the console box.

- (1) Remove the console box (if affected).

Refer to TIS, applicable model and model year Repair Manual:

- [2007](#) / [2008](#) / [2009](#) LS460:  
*Vehicle Interior – Interior Panels/Trim – “Interior: Front Console Box: Removal”*
- [2010](#) / [2011](#) / [2012](#) / [2013](#) LS460:  
*Vehicle Interior – Interior Panels/Trim – “Interior: Front Console Box (w/ Rear Seat Entertainment System): Removal”*
- [2010](#) / [2011](#) / [2012](#) / [2013](#) LS460:  
*Vehicle Interior – Interior Panels/Trim – “Interior: Front Console Box (w/o Rear Seat Entertainment System): Removal”*

## Instrument Panel (Dashboard) and Door Panels Sticky/Cracked

---

### Repair Procedure (continued)

- (2) Remove the compartment door from console box.

**NOTE**

Follow Repair Manual step 2.

- [2007](#) / [2008](#) / [2009](#) LS460:  
*Vehicle Interior – Interior Panels/Trim – “Interior: Front Console Box: Disassembly”*
- [2010](#) / [2011](#) / [2012](#) / [2013](#) LS460:  
*Vehicle Interior – Interior Panels/Trim – “Interior: Front Console Box (w/o Rear Seat Entertainment System): Disassembly”*

**CAUTION**

**Make sure to remove two dampers first then unscrew four screws.**

- (3) Install the previous compartment door onto the NEW the console box.

**NOTE**

Note follow Repair Manual step 3.

- [2007](#) / [2008](#) / [2009](#): LS460:  
*Vehicle Interior – Interior Panels/Trim – “Interior: Front Console Box: Reassembly”*
- [2010](#) / [2011](#) / [2012](#): LS460:  
*Vehicle Interior – Interior Panels/Trim – “Interior: Front Console Box (w/o Rear Seat Entertainment System)”*

**NOTE**

Follow Repair Manual step 6.

- [2013](#): LS460:  
*Vehicle Interior – Interior Panels/Trim – “Interior: Front Console Box (w/o Rear Seat Entertainment System)”*

**CAUTION**

**AFTER screwing in four screws, attach two dampers. Make sure to attach the dampers while the lid assembly is closed shut.**

## Instrument Panel (Dashboard) and Door Panels Sticky/Cracked

---

### Repair Procedure (continued)

- D. Remove the glove compartment (if affected).

Refer to TIS, applicable model and model year Repair Manual:

**NOTE**

Follow Repair Manual steps 2, 3, and 27 – 32.

- [2007](#) / [2008](#) LS460:  
*Vehicle Interior – Interior Panels/Trim* – “Instrument Panel: Instrument Panel Safety Pad: Removal”

**NOTE**

Follow Repair Manual steps 2, 3, and 27 – 31.

- [2009](#) LS460:  
*Vehicle Interior – Interior Panels/Trim* – “Instrument Panel: Instrument Panel Safety Pad: Removal”

**NOTE**

Follow Repair Manual steps 2, 3, and 13 – 18.

- [2010](#) / [2011](#) / [2012](#) LS460:  
*Vehicle Interior – Interior Panels/Trim* – “Instrument Panel: Instrument Panel Safety Pad: Removal”

## Instrument Panel (Dashboard) and Door Panels Sticky/Cracked

---

### Repair Procedure (continued)

- E. Remove the IP No. 1 (if affected).

Refer to TIS, applicable model and model year Repair Manual:

**NOTE**

Follow Repair Manual steps 23 and 25.

- [2007](#) / [2008](#) LS460:  
*Vehicle Interior – Interior Panels/Trim* – “Instrument Panel: Instrument Panel Safety Pad: Removal”

**NOTE**

Follow Repair Manual steps 22 and 24.

- [2009](#) LS460:  
*Vehicle Interior – Interior Panels/Trim* – “Instrument Panel: Instrument Panel Safety Pad: Removal”

**NOTE**

Follow Repair Manual steps 9 and 11.

- [2010](#) / [2011](#) / [2012](#) LS460:  
*Vehicle Interior – Interior Panels/Trim* – “Instrument Panel: Instrument Panel Safety Pad: Removal”

## Instrument Panel (Dashboard) and Door Panels Sticky/Cracked

---

### Repair Procedure (continued)

F. Remove the rear door panel(s) (if affected).

Refer to TIS, applicable model and model year Repair Manual:

**NOTE**

Follow Repair Manual steps 1 – 3.

- [2006](#) / [2007](#) / [2008](#) / [2009](#) / [2010](#) / [2011](#) / [2012](#) / [2013](#) IS250:  
*Vehicle Exterior – Door/Hatch – “Engine Hood / Door: Rear Door: Disassembly”*
- [2006](#) / [2007](#) / [2008](#) / [2009](#) / [2010](#) / [2011](#) / [2012](#) / [2013](#) IS350:  
*Vehicle Exterior – Door/Hatch – “Engine Hood / Door: Rear Door: Disassembly”*
- 2009 LS460:  
*Vehicle Exterior – Door/Hatch – “Exterior: Rear Door Window Frame Moulding (for [Standard](#) / [Long](#) Body): Removal”*
- [2012](#) LS460:  
*Vehicle Exterior – Door/Hatch – “Engine Hood / Door: Rear Door: Removal”*

**NOTE**

Follow Repair Manual steps 3 – 6.

- [2007](#) LS460:  
*Vehicle Exterior – Door/Hatch – “Engine Hood / Door: Rear Door: Removal”*
- 2008 LS460:  
*Vehicle Exterior – Door/Hatch – “Exterior: Rear Door Belt Moulding (for [Standard](#) / [Long](#) Body): Removal”*
- [2010](#) / [2011](#) LS460:  
*Vehicle Exterior – Door/Hatch – “Engine Hood / Door: Rear Door Removal”*

**NOTE**

Follow Repair Manual steps 4 – 8.

- [2013](#) LS460:  
*Vehicle Exterior – Door/Hatch – “Engine Hood / Door: Rear Door: Removal”*

## Instrument Panel (Dashboard) and Door Panels Sticky/Cracked

---

### Repair Procedure (continued)

3. Install the NEW panels.

A. Install the instrument panel safety pad assembly (if affected).

Refer to TIS, applicable model and model year Repair Manual:

- [2006](#) / [2007](#) / [2008](#) / [2009](#) / [2010](#) / [2011](#) / [2012](#) / [2013](#) IS250:  
*Vehicle Interior – Interior Panels/Trim – “Instrument Panel: Instrument Panel Safety Pad: Installation”*
- [2010](#) / [2011](#) / [2012](#) / [2013](#) / [2014](#) / [2015](#) IS250C:  
*Vehicle Interior – Interior Panels/Trim – “Instrument Panel: Instrument Panel Safety Pad: Installation”*
- [2006](#) / [2007](#) / [2008](#) / [2009](#) / [2010](#) / [2011](#) / [2012](#) / [2013](#) IS350:  
*Vehicle Interior – Interior Panels/Trim – “Instrument Panel: Instrument Panel Safety Pad: Installation”*
- [2010](#) / [2011](#) / [2012](#) / [2013](#) / [2014](#) / [2015](#) IS350C:  
*Vehicle Interior – Interior Panels/Trim – “Instrument Panel: Instrument Panel Safety Pad: Installation”*
- [2008](#) / [2009](#) / [2010](#) / [2011](#) / [2012](#) / [2013](#) / [2014](#) IS F:  
*Vehicle Interior – Interior Panels/Trim – “Instrument Panel: Instrument Panel Safety Pad: Installation”*
- [2007](#) / [2008](#) / [2009](#) / [2010](#) / [2011](#) / [2012](#) / [2013](#) LS460:  
*Vehicle Interior – Interior Panels/Trim – “Instrument Panel: Instrument Panel Safety Pad: Installation”*
- [2008](#) / [2009](#) / [2010](#) / [2011](#) / [2012](#) / [2013](#) LS600h:  
*Vehicle Interior – Interior Panels/Trim – “Instrument Panel: Instrument Panel Safety Pad: Installation”*

## Instrument Panel (Dashboard) and Door Panels Sticky/Cracked

---

### Repair Procedure (continued)

- B. Install the front door panel(s) (if affected).

Refer to TIS, applicable model and model year Repair Manual:

**NOTE**

Follow Repair Manual steps 36 – 40.

- [2006](#) / [2007](#) / [2008](#) / [2009](#) / [2010](#) / [2011](#) / [2012](#) / [2013](#) IS250:  
*Vehicle Exterior – Door/Hatch – “Engine Hood / Door: Front Door: Reassembly”*
- [2006](#) / [2007](#) / [2008](#) / [2009](#) / [2010](#) / [2011](#) / [2012](#) / [2013](#) IS350:  
*Vehicle Exterior – Door/Hatch – “Engine Hood / Door: Front Door: Reassembly”*

**NOTE**

Follow Repair Manual steps 43 – 45 and 48.

- [2007](#) / [2008](#) / [2010](#) / [2011](#) LS460:  
*Vehicle Exterior – Door/Hatch – “Engine Hood / Door: Front Door: Installation”*

**NOTE**

Follow Repair Manual steps 13 – 15 and 18.

- [2009](#) / [2012](#) LS460:  
*Vehicle Exterior – Door/Hatch – “Exterior: Front Door Belt Moulding: Installation”*

- C. Confirm the proper functioning of ALL switches within the door panels.

- D. Install the console box (if affected).

Refer to TIS, applicable model and model year Repair Manual:

- [2007](#) / [2008](#) / [2009](#) LS460:  
*Vehicle Interior – Interior Panels/Trim – “Interior: Front Console Box: Installation”*
- [2010](#) / [2011](#) / [2012](#) / [2013](#) LS460:  
*Vehicle Interior – Interior Panels/Trim – “Interior: Front Console Box (w/ Rear Seat Entertainment System): Installation”*
- [2010](#) / [2011](#) / [2012](#) / [2013](#) LS460:  
*Vehicle Interior – Interior Panels/Trim – “Interior: Front Console Box (w/o Rear Seat Entertainment System): Installation”*

## Instrument Panel (Dashboard) and Door Panels Sticky/Cracked

---

### Repair Procedure (continued)

- E. Install the glove compartment (if affected).

Refer to TIS, applicable model and model year Repair Manual:

**NOTE**

Follow Repair Manual steps 17 – 22, 46, 47, and 49.

- [2007](#) / [2008](#) LS460:  
*Vehicle Interior – Interior Panels/Trim* – “Instrument Panel: Instrument Panel Safety Pad: Installation”

**NOTE**

Follow Repair Manual steps 17 – 22, 45, 46, and 48.

- [2009](#) LS460:  
*Vehicle Interior – Interior Panels/Trim* – “Instrument Panel: Instrument Panel Safety Pad: Installation”

**NOTE**

Follow Repair Manual steps 18 – 23 and 33 – 35.

- [2010](#) / [2011](#) / [2012](#) LS460:  
*Vehicle Interior – Interior Panels/Trim* – “Instrument Panel: Instrument Panel Safety Pad: Installation”

- F. Install the IP No. 1 (if affected).

Refer to TIS, applicable model and model year Repair Manual:

**NOTE**

Follow Repair Manual steps 24 and 26.

- [2007](#) / [2008](#) / [2009](#) LS460:  
*Vehicle Interior – Interior Panels/Trim* – “Instrument Panel: Instrument Panel Safety Pad: Installation”

**NOTE**

Follow Repair Manual steps 25 and 27.

- [2010](#) / [2011](#) / [2012](#) LS460:  
*Vehicle Interior – Interior Panels/Trim* – “Instrument Panel: Instrument Panel Safety Pad: Installation”



## Instrument Panel (Dashboard) and Door Panels Sticky/Cracked

---

### Repair Procedure (continued)

- G. Install the rear door panel(s) (if affected).

Refer to TIS, applicable model and model year Repair Manual:

**NOTE**

Follow Repair Manual steps 29 – 32.

- [2006](#) / [2007](#) / [2008](#) / [2009](#) / [2010](#) / [2011](#) / [2012](#) / [2013](#) IS250:  
*Vehicle Exterior – Door/Hatch – “Engine Hood / Door: Rear Door: Reassembly”*
- [2006](#) / [2007](#) / [2008](#) / [2009](#) / [2010](#) / [2011](#) / [2012](#) / [2013](#) IS350:  
*Vehicle Exterior – Door/Hatch – “Engine Hood / Door: Rear Door: Reassembly”*

**NOTE**

Follow Repair Manual steps 42 – 45 and 48.

- [2007](#) LS460:  
*Vehicle Exterior – Door/Hatch – “Engine Hood / Door: Rear Door: Installation”*

**NOTE**

Follow Repair Manual steps 42 – 45 and 48.

- [2008](#) LS460:  
*Vehicle Exterior – Door/Hatch – “Engine Hood / Door: Rear Door: Installation”*

**NOTE**

Follow Repair Manual steps 42 – 45 and 48.

- [2009](#) LS460:  
*Vehicle Exterior – Door/Hatch – “Engine Hood / Door: Rear Door: Installation”*

**NOTE**

Follow Repair Manual steps 42 – 45.

- [2010](#) / [2011](#) LS460:  
*Vehicle Exterior – Door/Hatch – “Engine Hood / Door: Rear Door: Installation”*

**NOTE**

Follow Repair Manual steps 42 – 45.

- [2012](#) LS460:  
*Vehicle Exterior – Door/Hatch – “Engine Hood / Door: Rear Door Installation”*

## Instrument Panel (Dashboard) and Door Panels Sticky/Cracked

---

### Repair Procedure (continued)

- G. Install the rear door panel(s) (if affected). (continued)

Refer to TIS, applicable model and model year Repair Manual:

**NOTE**

Follow Repair Manual steps 42 – 46.

- [2013](#) LS460:  
*Vehicle Exterior – Door/Hatch – “Engine Hood / Door: Rear Door: Installation”*

- H. Confirm the proper functioning of ALL switches within the door panels.

4. Confirm the sticky, chalky, and/or cracked condition no longer exists.