



Subject: Mudflap Mounting Bracket Reinforcement			
Field change Program: Service Bulletin	Bulletin Number: 3130	Revision: A	Date: 01/24/2020
Coach Section: 03- Body	P/N: 03-33-2654, 03-33-2655		Type: Product Improvement

Application:

Coach Model	Model Year	VIN
J4500	To all coaches beginning with MY 2013, VIN: 66554	

WARNING

Read this entire procedure before beginning work.

Use Safe Shop Practices at All Times.

To avoid personal injury:

- a. Proper Personal Protective Equipment (PPE) must be worn. Safety glasses and protective gloves are required for working with DEF Fluid.*
- b. Turn the main battery disconnect switch to the OFF position.*
- c. Ensure that both the front and the rear wheels are chocked.*
- d. Positioning the ENGINE RUN and ENGINE START switches on the engine compartment remote control box to the OFF position.*
- e. Allow enough time for components to cool down prior to working in the engine compartment.*

1.0 Description

This procedure outlines the steps to install reinforcement bracket for the mudflap. This procedure applies to all the J coaches equipped with mudflap, MCI P/N: 03-33-2646.

2.0 Material requirements

ITEM	PART NO	QTY	U/M	DESCRIPTION
1	03-33-3701	1	EA	Bracket Assy- Mudflap, RH
2	03-33-3699	1	EA	Bracket Assy, Mudflap, LH
3	19-01-1618	2	EA	Capscrew, M8 x 40mm
4	19-03-0535	6	EA	Locknut -Flanged, 3/8-16UNC
5	19-1-25	2	EA	Capscrew 3/8-16 x 1.5
6	19-1-732	4	EA	Capscrew 3/8-16 x 2
7	19-2-119	12	EA	Washer-Fender, 3/8

3.0 Special Tools

No special tools required.

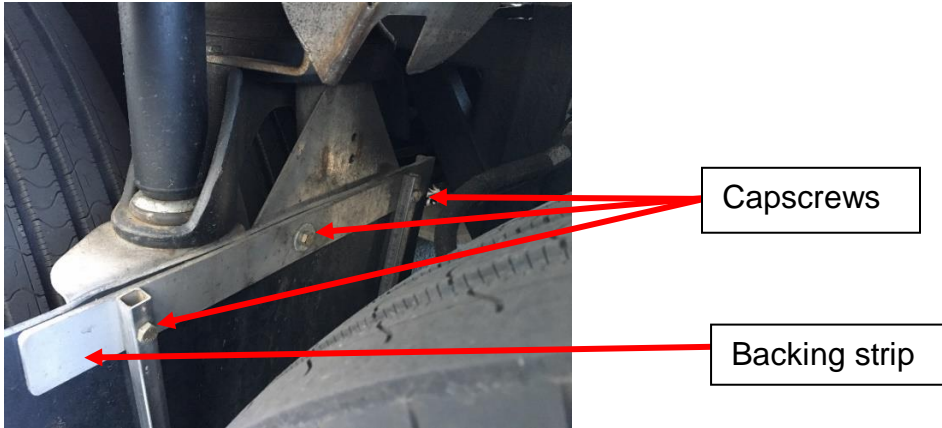
4.0 Procedure

4.1 Removing the mudflap

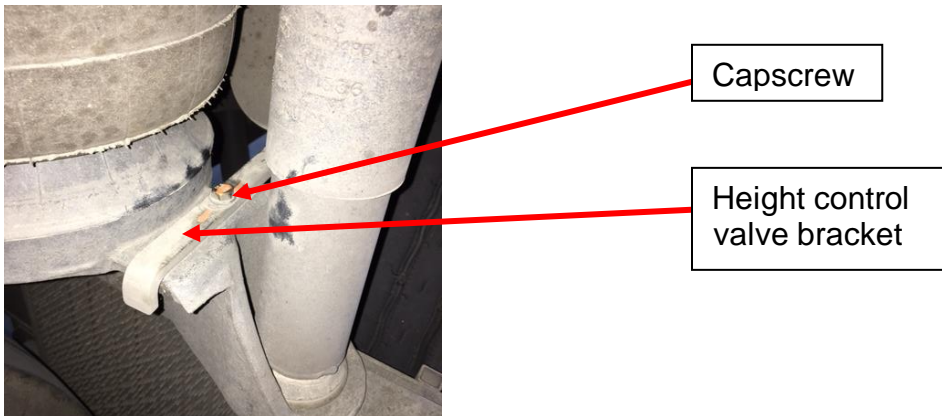
Locate the rear axle mudflap assembly on the LH side of the coach.



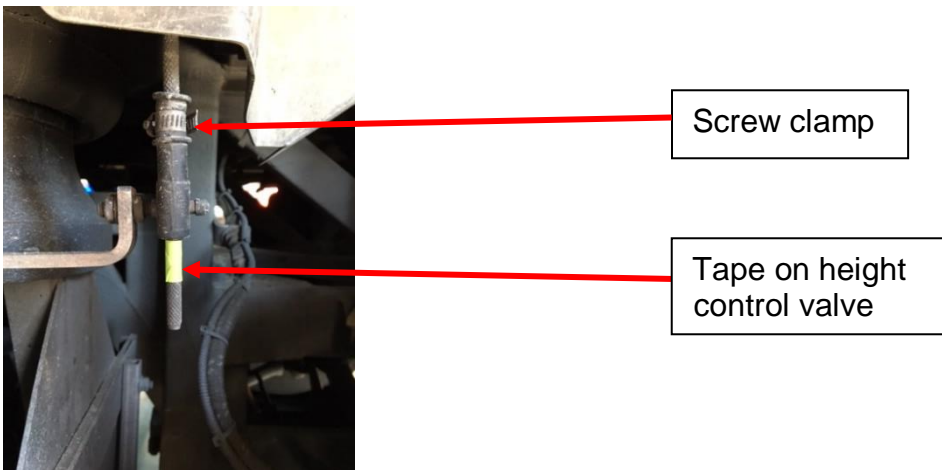
Remove and discard the 3 capscrews, nuts, washers and backing strip securing the mudflap. Save the mudflap and mudflap bar.



Remove and discard the capscrew on the height control valve bracket.

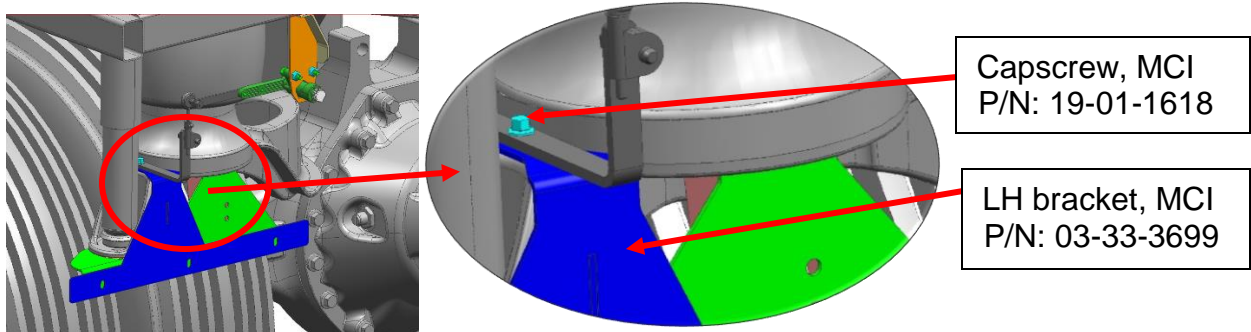


Mark location of height control valve adjustment rod clamp with tape. Loosen screw clamp.



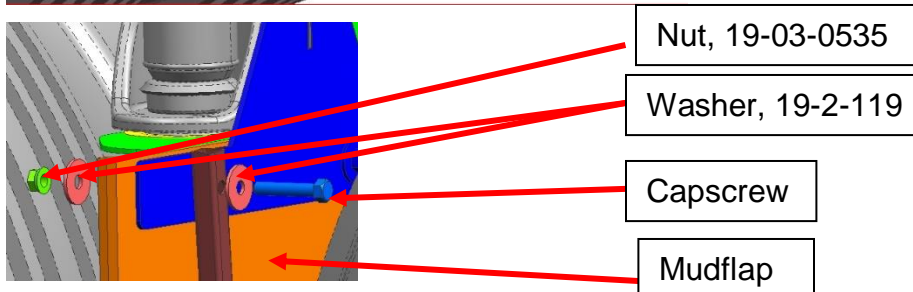
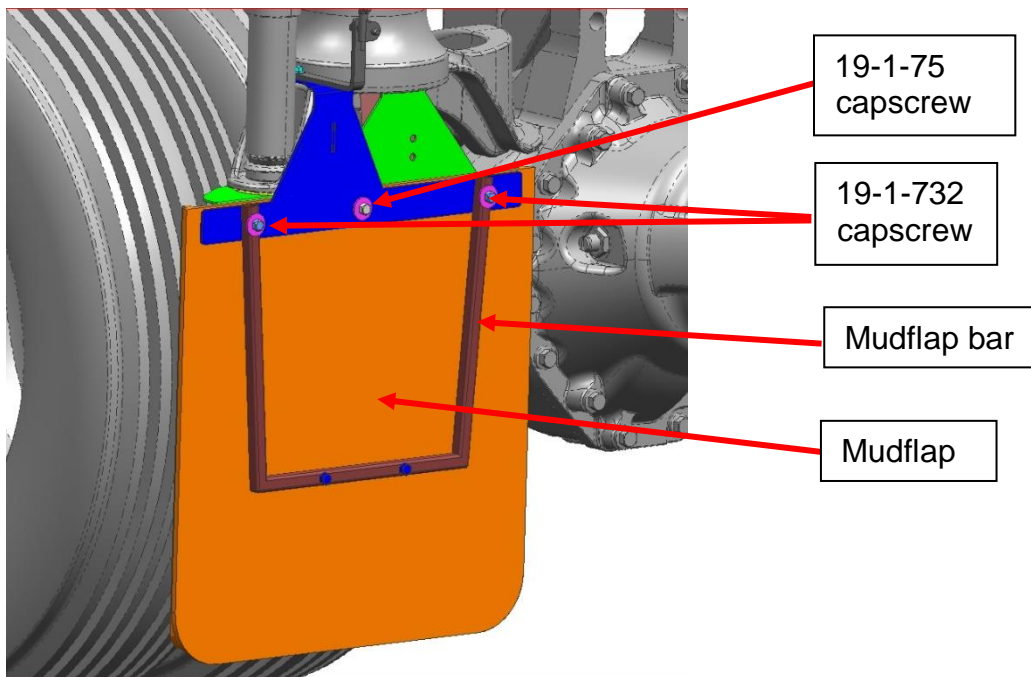
4.2 Install Reinforcement Bracket

Loosely install the LH bracket, MCI P/N: 03-33-3699, to the coach using capscrew, MCI P/N: 19-01-1618.



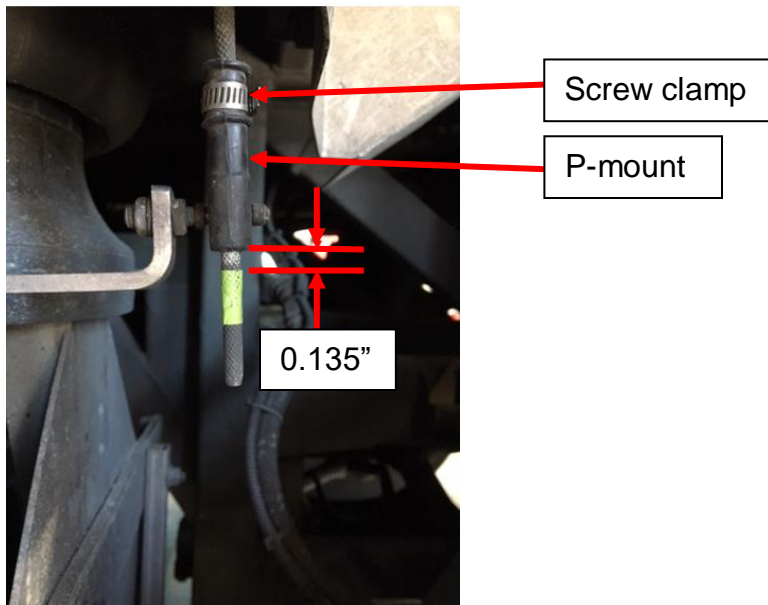
Torque the capscrew to 13-16 Ft-Lbs.

Install the mudflap and the mudflap bar to the LH bracket using capscrews, washers and locknuts. Use 19-1-732 capscrews for the corner slots and 19-1-75 for the center slot. Use washers, 19-2-119, on either side of the install and use nuts, 19-03-0535 for all capscrews. Torque all the capscrews to 18-22 Ft-Lbs.



4.3 Adjust Height Control Clamp Position

Push rubber P-mount up .135" on the adjustment rod and tighten screw clamp.



Install the height control valve lever.

Repeat sections 4.1, 4.2, 4.3 for the RH mudflap.

End of the procedure