

Subject: Replacing Slides on The Radio Tray			
Field Change Program: Procedure	Procedure Number: 03-275	Revision: A	Date: 01/17/2020
Coach Section: 03-Body	P/N: 07-08-5286		Type: Product Improvement

Application:

Coach Model	Model Year	VIN
D4500	2014 - 2018	13358 - 13402, 13404 - 13428, 13516 - 13540, 14114 - 14123, 14589, 14735 - 14767, 14769 - 14775, 14777 - 14778, 14780, 14784, 15048, 15060 - 15076, 15078 - 15096, 15120 - 15137, 15483 - 15531, 15585 - 15594

⚠ WARNING

Read this entire procedure before beginning work.

Use Safe Shop Practices at All Times.

To avoid personal injury:

- a. Proper Personal Protective Equipment (PPE) must be worn. Safety glasses and protective gloves are required for working with DEF Fluid.*
- b. Turn the main battery disconnect switch to the OFF position.*
- c. Ensure that both the front and the rear wheels are chocked.*
- d. Position the ENGINE RUN and ENGINE START switches on the engine compartment remote control box to the OFF position.*
- e. Allow enough time for components to cool down prior to working in the engine compartment.*

1.0 Description

This procedure outlines the steps to replace the radio tray slides and reinforce the tray to avoid the tray from rattling and cracking.

2.0 Material requirements

ITEM	PART NO	QTY	U/M	DESCRIPTION
1	07-10-1914	2	EA	Angle-Support, Radio tray
2	19-1-630	24	EA	Screw-Machine, Pan Head#8 -32 x1.0
3	19-01-0180	1	EA	Pin-Lock, 3/16 Dia x 7/8 long, Spring
4	07-10-1915*	1	EA	Slide- Drawer, PR Tray
5	19-2-102	8	EA	Washer-LK,HLCL,#10 0.2ID, 0.3OD, 0.05THK, SST,SPR, 0.07WD
6	19-1-111	8	EA	Nut- Hex 8-32 Stainless Steel

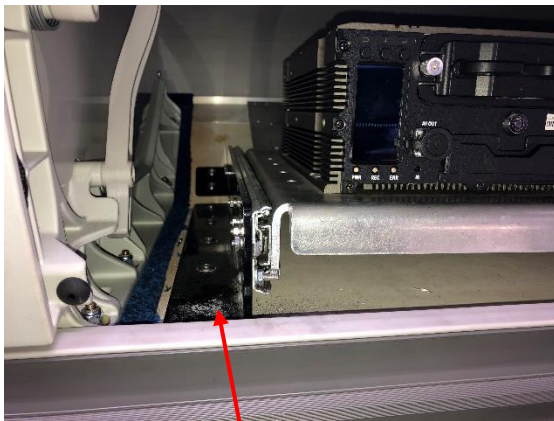
* This part is a set of two slides (right hand and left hand).

3.0 Special tools

No special tools required

4.0 Removing slides from radio tray

Locate the radio tray in LH parcel rack compartment number 3. Remove and save the screws and the washers securing the angle bracket to the parcel rack towards the back of the coach. Repeat the step for the angle bracket towards the front of the coach.



Screws securing tray in place in front



Screws securing tray in place in the rear

Turn the tray in the front such that a major part of the tray is still in the parcel rack.

NOTICE

CAUTIONS

Position the tray so it doesn't move or fall.



Radio tray

Parcel Rack

Remove bolts, nuts, and washers securing the bracket and slide to the tray. Save the nuts and washers. Discard the bolts.



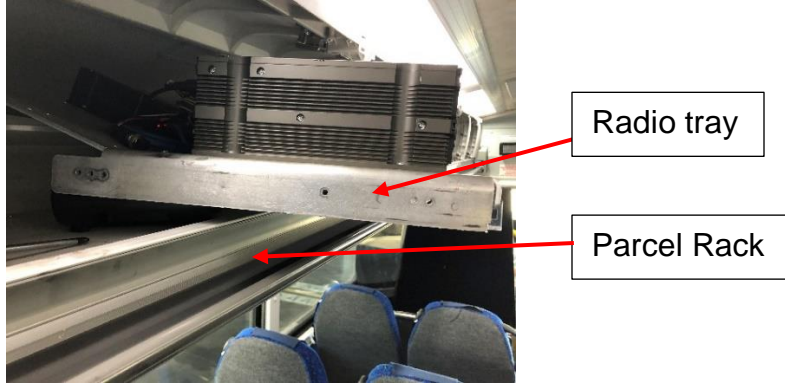
Nuts securing the slide

Repeat the step towards the rear of the bracket by turning tray on the other side.

NOTICE

CAUTIONS

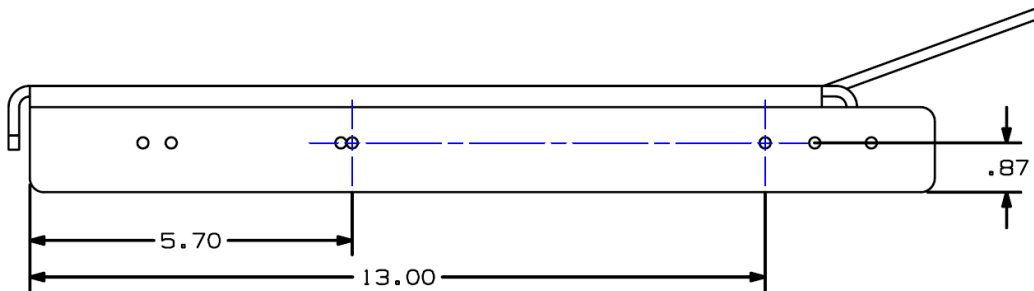
Position the tray so it doesn't move or fall!



5.0 Reworking tray

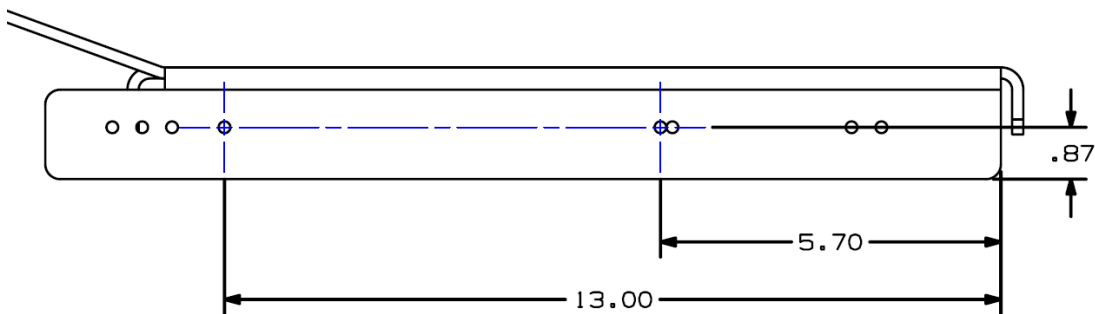
5.1 Drilling holes in the RH side of the tray

Drill two holes as shown below using a 13/64 drill bit on the RH side tray.



5.2 Drilling holes in the LH side of the tray

Drill two holes as shown below using a 13/64 drill bit on the LH side tray.



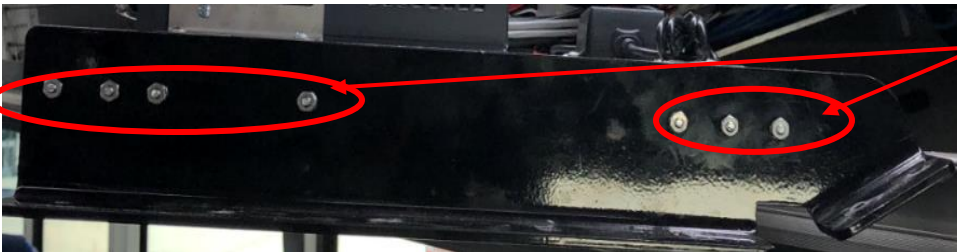
6.0 Removing slides from brackets

Remove screws, washers, and nuts securing the slide to the RH bracket. Discard the slide and screws. Save washers and nuts.



Nuts securing the slide to the bracket

Repeat the step on the LH bracket.



Nuts securing the slide to the bracket

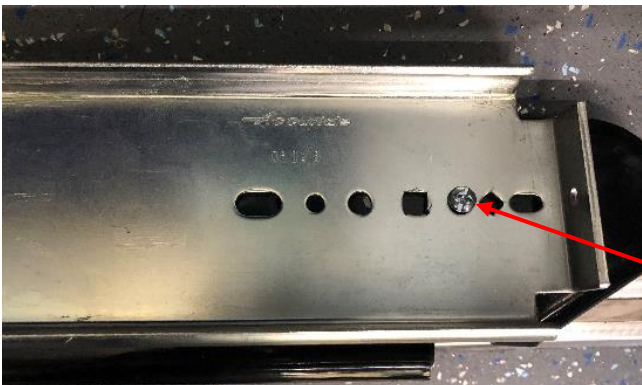
7.0 Installing slides on brackets

Install a new LH slide, part of drawer slide MCI P/N: 07-10-1915, to the LH bracket using screws, MCI P/N: 19-1-630, existing washers and nuts.



LH slide part of drawer slide, MCI P/N: 07-10-1915

Nuts



Screw, MCI P/N: 19-1-630

NOTICE

CAUTIONS

Confirm that the slide is in the proper position. The top of the flat yellow lock lever must be on the top side.



Repeat the step on RH bracket using RH slide, part of drawer slide MCI P/N: 07-10-1915, to the RH bracket using screws, MCI P/N: 19-1-630, existing washers and nuts.

Drill a hole in the assembled RH bracket using a 13/64 size drill bit at the location shown below.



8.0 Installing bracket to radio tray

Turn the tray in the front such that a major part of the tray is still in the parcel rack.

NOTICE

CAUTIONS

Position the tray so it doesn't move or fall.



Radio tray

Parcel Rack

Install the modified RH bracket assembly to the tray using screws, MCI P/N: 19-1-630, existing nuts and washers.



Screws

Repeat the step to install the LH bracket assembly.

9.0 Securing tray to the parcel rack

9.1 Secure LH bracket to parcel rack

Push the tray back in the original position. Secure the LH bracket to the parcel rack using existing screws and washers.



Screws and washers

9.2 Secure RH bracket to parcel rack

With the RH bracket as template drill 7 new holes in the parcel rack using 5/32 drill bit.

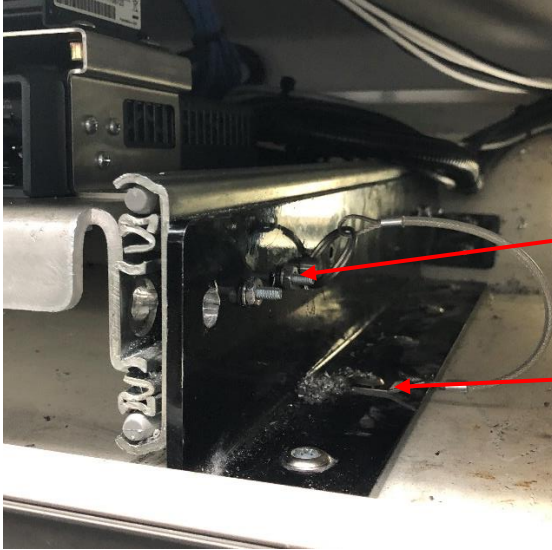


New holes

Secure the RH bracket to the parcel rack using existing screws and washers.

9.3 Pin installation

Install the pin, MCI P/N: 19-01-0180, to the tray in the hole drilled on the RH bracket as shown below and secure it to the RH bracket at the second bolt.



Pin, MCI P/N: 19-01-0180

Second bolt

10.0 Installing supports

10.1 Installing front support

Place support, MCI P/N: 07-10-1914, below the tray and in the front such that holes in the support align with existing holes in the tray.

Install support, MCI P/N: 07-10-1914, using screws, MCI P/N: 19-1-630, nuts, MCI P/N:19-3-11, and washers, MCI P/N:19-2-102.



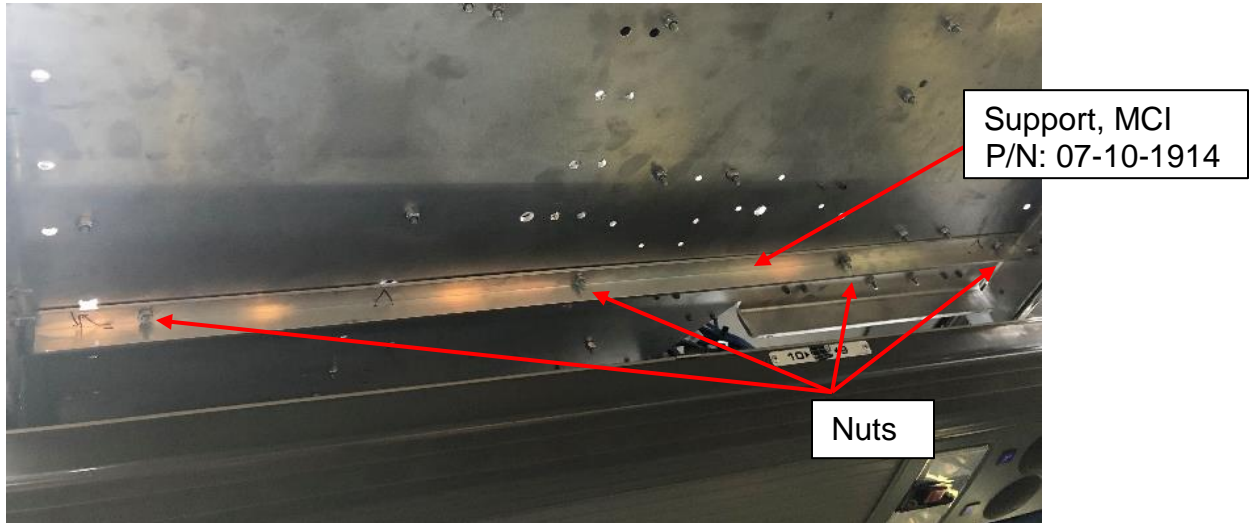
Nuts

Support, MCI
P/N: 07-10-1914

10.2 Rear Support

Place support, MCI P/N: 07-10-1914, below the tray and in the rear such that holes in the support align with existing holes in the tray.

Install support, MCI P/N: 07-10-1914, using screws, MCI P/N: 19-1-630, nuts, MCI P/N:19-3-11, and washers, MCI P/N:19-2-102.



11.0 Verification

11.1 Verify Pin

Ensure the pin inserts and retracts smoothly in the hole. If the pin isn't smooth expand hole until smooth motion is achieved.

11.2 Tray Motion

Slide tray in and out to ensure there is smooth motion. If the slides are binding identify the bolt head in the tray binding the slide. Loosen the identified bolt and re-tighten it such that it is clear of the tray's path. Check all bolts to verify all are secure.

End of the procedure