

**Title: External Sound Module Parts Update****System: Electrical (90)****Applicability: MY20 Revero GT****Sequence: 01****First Release Rev: 0.1****PURPOSE:**

Some Revero GT models may have been built with an External Sound Module (ESM) that has been updated. To promote the best possible customer experience, a replacement ESM should be installed prior to delivery of the vehicle to prevent any possible concerns or replace the module as per this bulletin if already delivered. The affected VINs are in the table below.

50GK43SB4LA000002	50GK43SB7LA000043	50GK43SBXLA000070
50GK43SB3LA000010	50GK43SB9LA000044	50GK43SB1LA000071
50GK43SB8LA000021	50GK43SB0LA000045	50GK43SB3LA000072
50GK43SBXLA000022	50GK43SB2LA000046	50GK43SB5LA000073
50GK43SBXLA000022	50GK43SB4LA000047	50GK43SB7LA000074
50GK43SB1LA000023	50GK43SB6LA000048	50GK43SB2LA000077
50GK43SB3LA000024	50GK43SB8LA000049	50GK43SB4LA000078
50GK43SB5LA000025	50GK43SB4LA000050	50GK43SB6LA000079
50GK43SB9LA000027	50GK43SB6LA000051	50GK43SB2LA000080
50GK43SB0LA000028	50GK43SB8LA000052	50GK43SB4LA000081
50GK43SB2LA000029	50GK43SBXLA000053	50GK43SB1LA000085
50GK43SB9LA000030	50GK43SB1LA000054	
50GK43SB0LA000031	50GK43SB3LA000055	
50GK43SB2LA000032	50GK43SB7LA000057	
50GK43SB4LA000033	50GK43SB9LA000058	
50GK43SB6LA000034	50GK43SB0LA000059	
50GK43SB8LA000035	50GK43SB7LA000060	
50GK43SBXLA000036	50GK43SB9LA000061	
50GK43SB3LA000038	50GK43SB6LA000065	
50GK43SB5LA000039	50GK43SB8LA000066	
50GK43SB1LA000040	50GK43SBXLA000067	
50GK43SB3LA000041	50GK43SB1LA000068	
50GK43SB5LA000042	50GK43SB3LA000069	

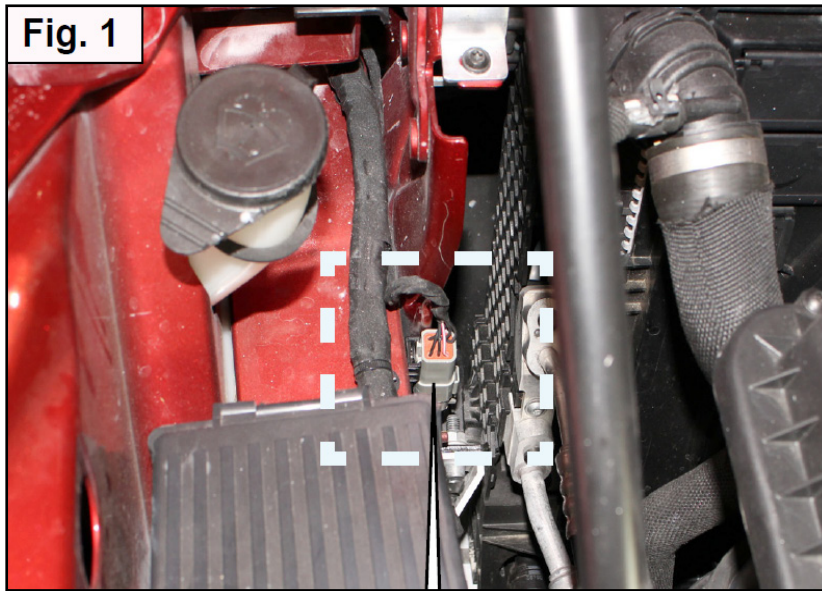
Create a TSS case for this procedure.

Karma Automotive Bulletins and service documents are intended for use by experienced and trained Technicians. If you lack the skills, tools, equipment and a suitable workshop for any procedure described in this document, we suggest you leave such repairs to a Karma retailer and service provider. See your service provider for advice on whether your vehicle may benefit from the information contained within this document. The information contained in the Karma Bulletin is accurate at the date of publication. However, Karma Automotive regularly updates technical information. Please check with your Karma Automotive Retailer and Karma Automotive service provider that the bulletin you intend to use contains the latest available information.

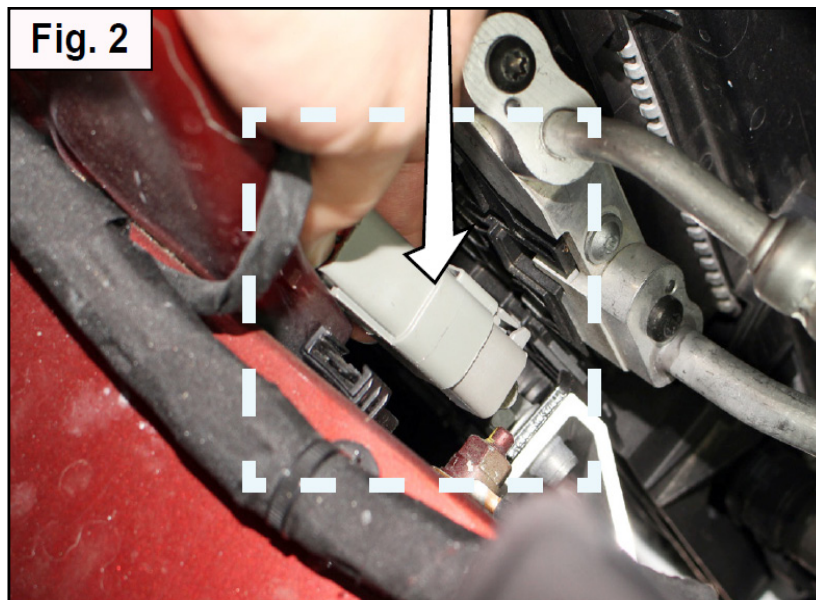
Title: External Sound Module Parts Update

Applicability: MY20 Revero GT

1. Open the hood and locate the connector for the External Sound Module (ESM) near the washer bottle, as shown in Fig 1.



2 . Carefully disconnect the two halves of the ESM connector (Fig. 2).

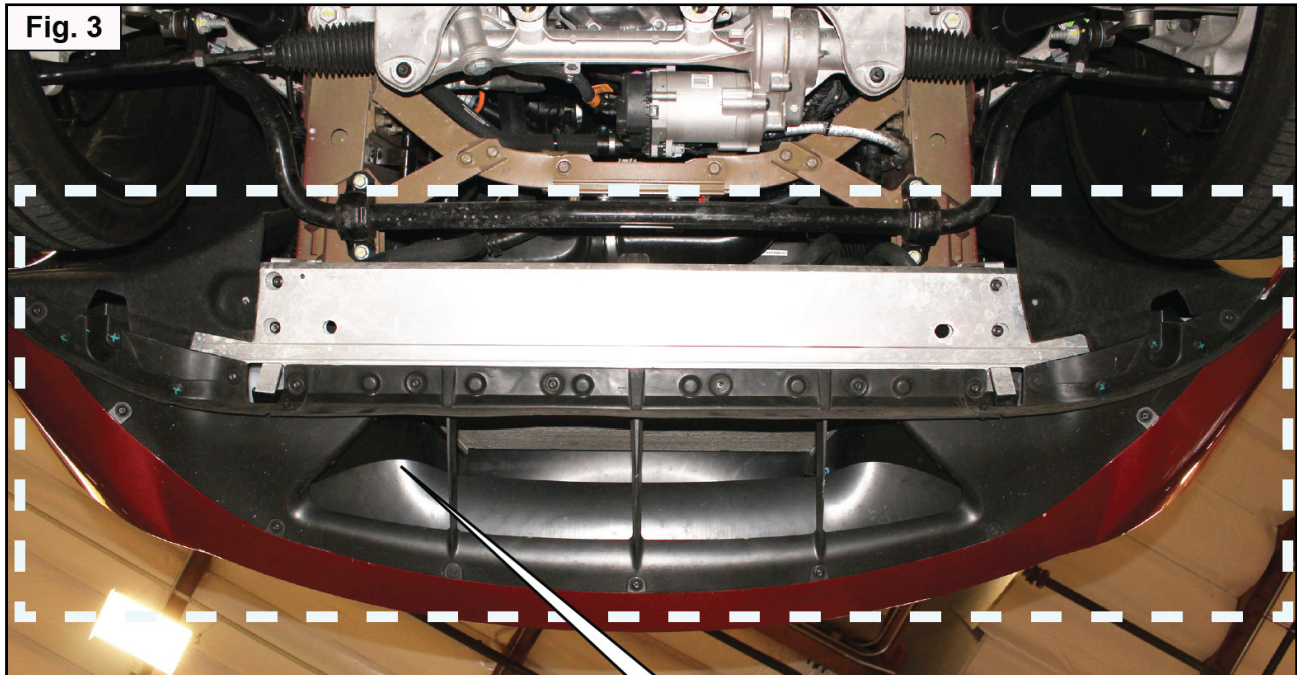


Karma Automotive Bulletins and service documents are intended for use by experienced and trained Technicians. If you lack the skills, tools, equipment and a suitable workshop for any procedure described in this document, we suggest you leave such repairs to a Karma retailer and service provider. See your service provider for advice on whether your vehicle may benefit from the information contained within this document. The information contained in the Karma Bulletin is accurate at the date of publication. However, Karma Automotive regularly updates technical information. Please check with your Karma Automotive Retailer and Karma Automotive service provider that the bulletin you intend to use contains the latest available information.

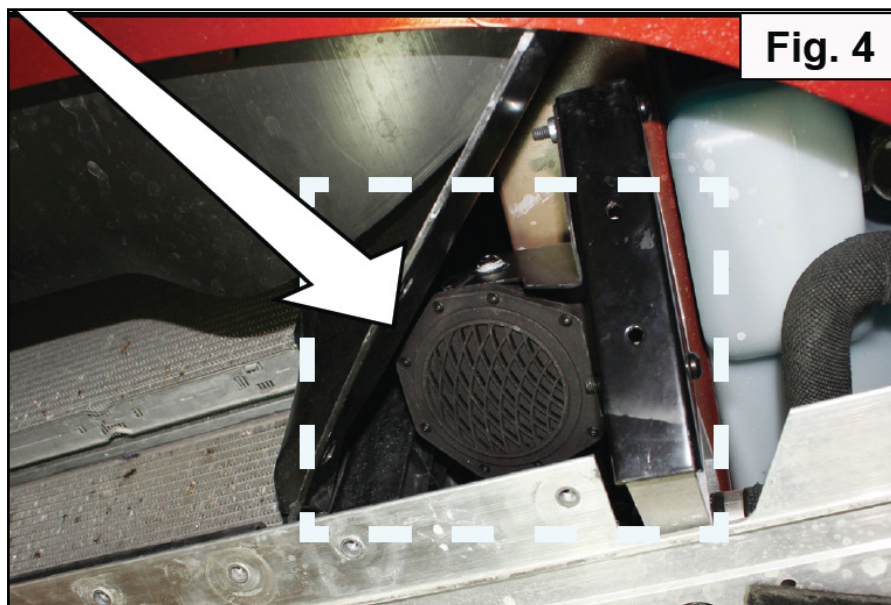
Title: External Sound Module Parts Update

Applicability: MY20 Revero GT

3. Remove the lower valance from the front fascia (Fig. 3).



4. Locate the ESM on the left side of the front fascia, as shown in Fig 4.

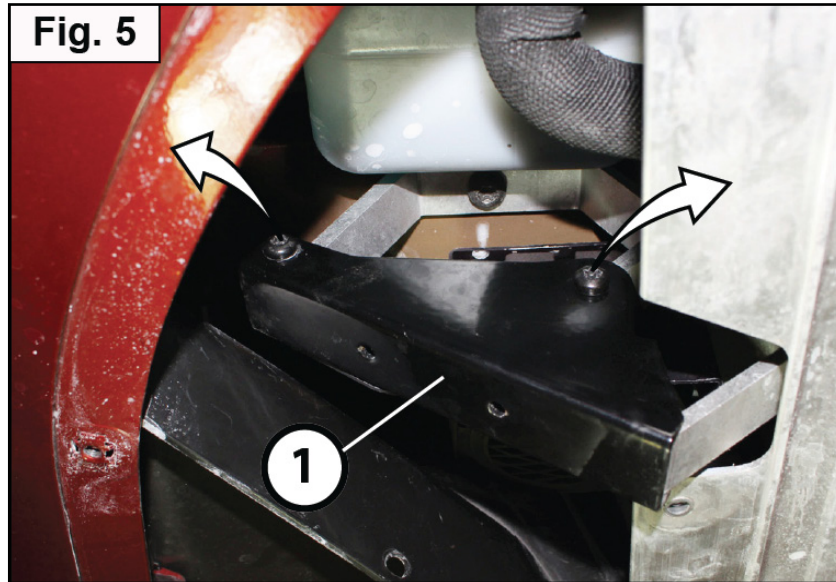


Karma Automotive Bulletins and service documents are intended for use by experienced and trained Technicians. If you lack the skills, tools, equipment and a suitable workshop for any procedure described in this document, we suggest you leave such repairs to a Karma retailer and service provider. See your service provider for advice on whether your vehicle may benefit from the information contained within this document. The information contained in the Karma Bulletin is accurate at the date of publication. However, Karma Automotive regularly updates technical information. Please check with your Karma Automotive Retailer and Karma Automotive service provider that the bulletin you intend to use contains the latest available information.

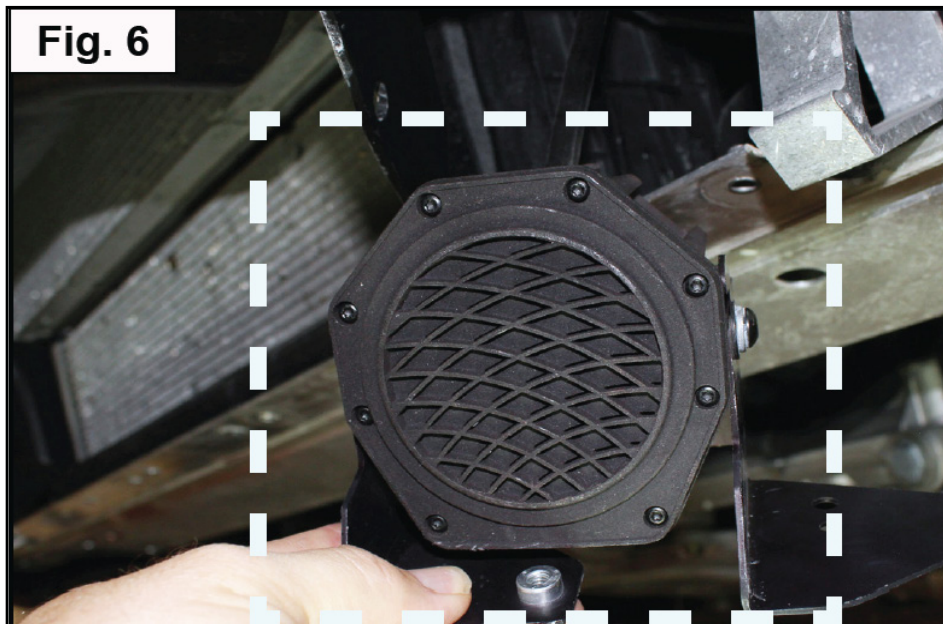
Title: External Sound Module Parts Update

Applicability: MY20 Revero GT

5. Remove two (2) Torx head bolts from ESM bracket (1) - torque value 6.0Nm +/- 1 Nm, as shown in (Fig 5) front wheel well liners. There are 12 push pins on each liner.



6. Remove the ESM from the front fascia, as shown in (Fig. 6).



7. Install the replacement ESM the revers of the removal steps.

Karma Automotive Bulletins and service documents are intended for use by experienced and trained Technicians. If you lack the skills, tools, equipment and a suitable workshop for any procedure described in this document, we suggest you leave such repairs to a Karma retailer and service provider. See your service provider for advice on whether your vehicle may benefit from the information contained within this document. The information contained in the Karma Bulletin is accurate at the date of publication. However, Karma Automotive regularly updates technical information. Please check with your Karma Automotive Retailer and Karma Automotive service provider that the bulletin you intend to use contains the latest available information.



Title: External Sound Module Parts Update

System: Electrical (90)

Applicability: MY20 Revero GT

Sequence: 01

First Release Rev: 0.1

PARTS REQUIRED:

PART NUMBER	DESCRIPTION	QUANTITY
C131181900301	External Sound Module (ESM)	1

SHOP SUPPLIES if Required:

PART NUMBER	DESCRIPTION	QUANTITY
N/A		

SPECIAL TOOLS:

DESCRIPTION
N/A

CAUSAL PART:

PART NUMBER	DESCRIPTION
C131181900300	External Sound Module (ESM)

LABOR CODES:

CODE	DESCRIPTION	TIME	DEFECT CODE
90-70-10-00	ESM R & R	0.7	90-70-10-33

SUBLET:

CODE	DESCRIPTION	AMOUNT
N/A		

WARRANTY DISPOSITION: This repair is covered under the New Vehicle Limited Warranty, in effect for four (4) years from the in-service date with no mileage limitation.