

Technical product information

Topic	Front roof console replacement - Continental Flying Spur
Market area	Bentley: worldwide (2WBE)
Brand	Bentley
Transaction No.	2058349/1
Level	EH
Status	Approval
Release date	

New customer code

Object of complaint	Complaint type	Position
vehicle service -> vehicle diagnosis -> guided fault finding	control units, services -> with event log entry	
lighting system, signalling -> interior illumination -> interior lights	functionality -> does not switch on	front
lighting system, signalling -> interior lighting	high-volume parts	
driver assist systems, convenience features -> garage door opener	component / consumables	
roof systems, special installations -> sliding/tilting sunroof	functionality	
body fixtures and fittings -> wash-wipe control operation -> wipe-on-demand by rain sensor	functionality -> defective function sequence	

Vehicle data

Continental Flying Spur

Sales types

Type	MY	Brand	Designation	Engine code	Gearbox code	Final drive code
3W2*	2009	E		*	*	*
3W2*	2010	E		*	*	*
3W2*	2011	E		*	*	*
3W2*	2012	E		*	*	*

Documents

Document name
master.xml

Customer statement / workshop findings

Refer to the Technical background section

Technical background

Front roof control module with the part numbers listed below are no longer programmed by Bentley Motors prior to dispatch

3W5 959 527 AH0DN

3W5 959 527 AL0DN

The programming procedure within the Measure section must be followed

Production change

Not applicable

Measure

1) Replace the front roof control module – Refer to Rep.Gr 70

- Referring to Figure 1 - Navigate to the Roof Electronic control module
- Select Guided functions
- Select - Replace - C00255 Rain and light detector sensor (G397)
- Select - Execute and follow all remaining on screen prompts until the programming is complete

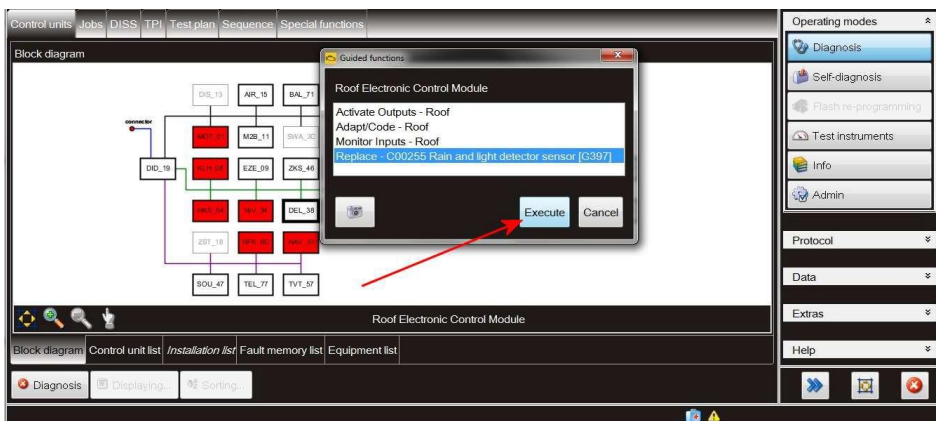


Figure 1

2) Check all the functions of the front roof control module are operating correctly