

# Airstream Service Bulletin

Bulletin Number: 180

Use Operation Code: **TTSBR8375079**

Product Line: 30' Airstream Classic

Subject: Alde Fluid Replacement & Service Maintenance

Airstream and Alde are promoting a Technical Service Bulletin to replace the glycol in 2018, 2019 and early 2020 Classics to a new Alde fluid. The new glycol fluid has been improved for better performance. In addition to replacing the glycol, two grounds will also need to be added to the system. Some units may have one ground already installed.

Alde will be sending a pump kit to all of our travel trailer dealerships. To get glycol please call Airstream Tech Support at 877-344-1076 and use prompt-1 to order a five-gallon bucket of glycol to perform this service bulletin. Glycol part number: 360371-201C

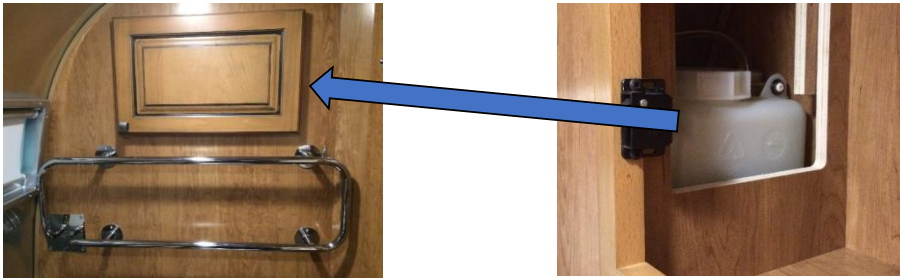
Alde uses a Service Pump Kit which includes two pumps to aid in adding and removing glycol. Airstream recommends using this service kit when replacing the

### Alde Service Kit Includes:

- 30' service pump kit
- Spring clip pliers
- Hose pinch pliers
- Aluminum flushing tube
- Clear hose 22mm
- 10mm Cap
- 22mm Cap

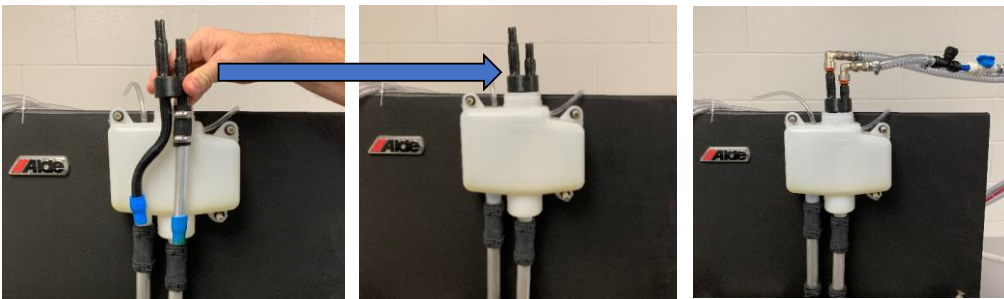


The first step in flushing the system is to locate the expansion tank.

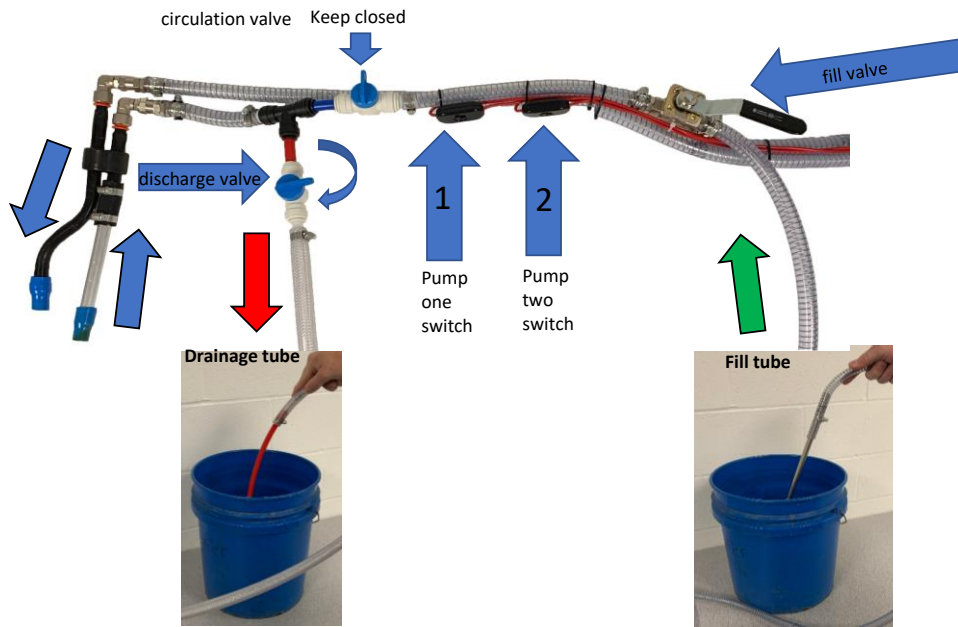


The 30' Classic's tank is in the bathroom cabinet, above the toilet. Remove the closeout panel inside the cabinet to access the tank.

### **Alde Flushing Procedure:**



Insert the service pump adapter into the expansion tank and connect the two leads. The pump adapter will fit snug into the in and out pipes of the expansion tank. It is important to note that the lead with the discharge valve connects to the straight tube.



Insert the drainage tube into an empty 5-gallon bucket. Make sure to empty the bucket when flushing if you are using more than 5 gallons of water.

Fill a clean 5-gallon bucket with clean tap water. You may need to run 5 to 10 gallons of water to thoroughly flush the system.



Connect the alligator clamps to a battery; red for positive and black for negative.

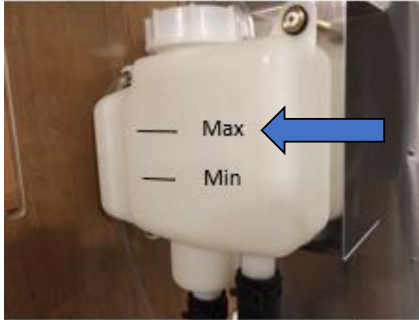
Before turning ON the pumps, open the discharge valve and make sure the fill valve handle is pointing towards the fill hose that goes to the clean water bucket. Turn ON pump-1 until fluid starts to run into the discharge bucket. Once the fluid is flowing, turn ON pump-2 to speed up the flushing process. Continue to flush the glycol until you see water flowing into the discharge bucket.

**Alde Glycol Filling Procedure:**

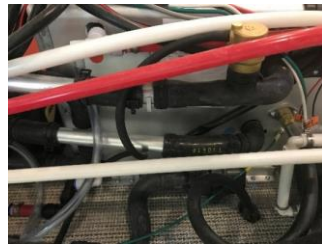
Insert the drainage tube into an empty 5-gallon bucket. Make sure to empty the bucket when filling to prevent overflow.

Insert the fill tube into a clean 5-gallon bucket of new glycol.

When filling the system with glycol, follow the same process used to flush the system. First, make sure the discharge valve is open and the fill valve handle is pointing towards the glycol bucket hose. Turn ON pump-1 until fluid starts to run into the discharge bucket. Once the fluid is flowing, turn ON pump-2 to speed up the filling process. Continue to fill the system until you see glycol flowing into the discharge bucket.



Once the system is full of new glycol, remove the service pump adapter. Fill the expansion tank to the max line to begin the bleeding process. When finished bleeding the glycol should be filled to one inch above the minimum line.



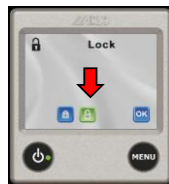
Once the clean water has filled the system, check the rubber connectors and pipes for bulges or leaks. If bulges or leaks are found contact Airstream Tech Support at 877-344-1076, prompt-1, for further

**3010 Alde controls:**

To bleed the air out of the system you will need to turn the cycle pump on and off from thermal to continuous. This will move the air around the system to the bleeder valves.



Turn ON the Alde panel and make sure the heater is turned OFF. Blue is the OFF position. Tap the key (or wrench) icon in the bottom right corner.



If the key icon is visible you will have to unlock the control pad to get to the next screen. If the wrench icon is displayed it will go directly to the next screen.



Select the pump cycle button.



Select "Continuous" to turn the pump ON. Run the pump for about 15 minutes, filling the expansion tank as needed. (Remember to set the pump back to "Thermal" when finished)

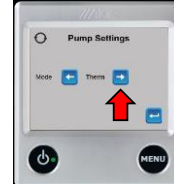
**3020 Alde controls:**



Turn ON the Alde panel and make sure the heater is turned OFF. Blue is the OFF position. Tap the gear icon in the bottom right corner.



Select the pump cycle button.



Select "Continuous" to turn the pump ON. Run the pump for about 15 minutes, filling the expansion tank as needed. (Remember to set the pump back to "Thermal" when finished)



There are several bleeder valves throughout the system but only a few are easy to access. To bleed the system, turn the valve counter-clockwise to let air out. After bleeding, close the valve and make sure it is tight. After each bleeder valve has been bled check the level of glycol in the expansion tank.

**Make sure the pump is OFF, when opening the bleeder valves, to prevent air from being pulled in.**

**30' Classic Bleeder Valve Locations:**



The first bleeder valve is located behind the sofa. This valve can be accessed by reaching under the valance and behind the sofa.



By removing the fire extinguisher and holder you can access a bleeder valve behind the register. To remove the holder from the wall, unscrew the four screws behind the caps.



The bleeder valve under the galley is on the left, towards the rear of the cabinet.



A bleeder valve is located under each night stand. To access, the drawer will need to be removed.



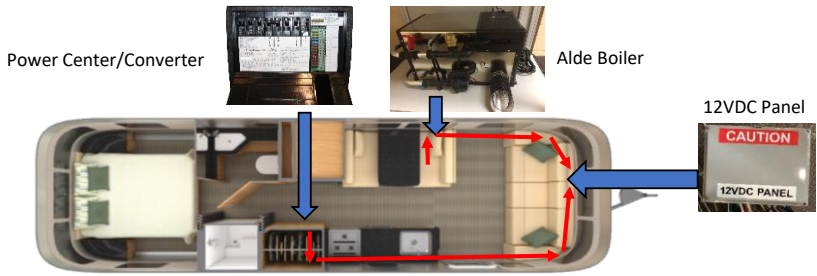
The last bleeder valve can be found on the towel bar, located in the bathroom.



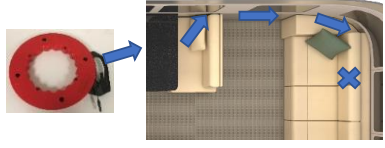
After the system has been bled, make sure the glycol level is at the max line. This process may need to be repeated a few times to get all the air out of the system. Raising and lowering the front of the trailer before starting this process again may help in moving the air to the bleeder valves.

**Adding Grounds to the 30' Classic:**

The following instructions are steps to add two isolated grounds to the 30' Classic trailer. One from the Alde boiler to the 12VDC panel and a second from the converter to the 12VDC panel.



Begin by removing the center section of the lounge to gain access to the 12VDC power panel. Use a 3/4" socket to remove the two nuts at the front of the center cushion. The rear of the cushion is held in place by a pin. Once the two nuts are removed, lift up and out on the cushion to remove.



Run a fish tape from the dinette, behind the convector, to the lounge. Pull a 14-gauge wire from the 12VDC panel to the Alde boiler.





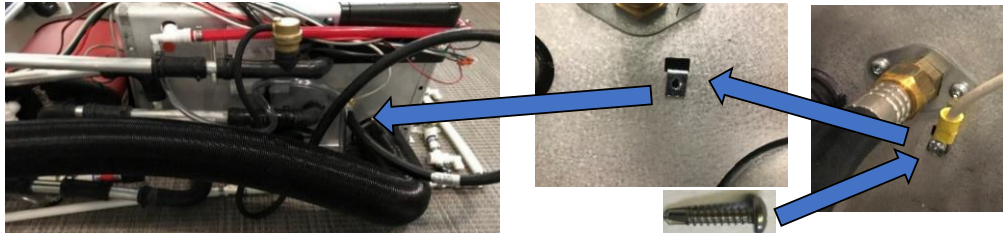
Run the wire through the back of the dinette seat.



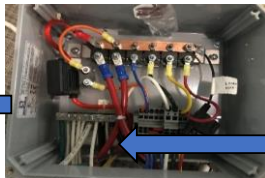
The wire will run behind the convactor closeout. The wire should rest at the bottom of the cover and not on top of the convectors.



The wire will run under the lounge to the 12VDC power panel.



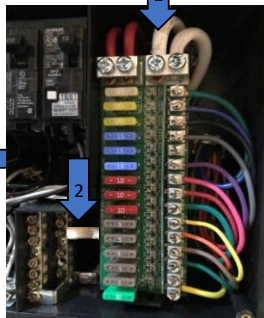
Attach the end of the 14-gauge wire to the Alde boiler case using a self-taping 3/4" #8 screw.  
Part number: 320111



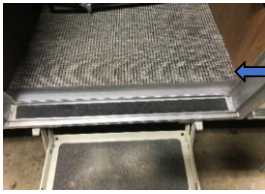
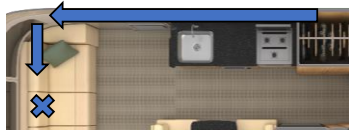
The 12 volt power panel under the lounge has the main grounding bar for the 12 volt system.



To run the second wire, you will need to access the converter by removing the panel below the wardrobe and then remove the power center.



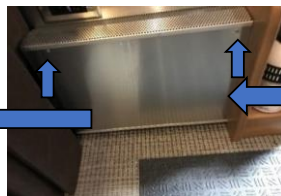
Two wires will need to be removed from the power center. The first, wire-1(6 gauge) in the picture above, runs to the 12VDC power panel under the lounge. The second, wire-2(8 gauge), runs to the converter. A third white wire, wire-3 (8 gauge), will need to be removed from the converter. Cap off all three wires, as they will not be used. Run a new 6-gauge ground wire connected directly to the converter, torqued to 25-35 inch-pounds, and run straight to the 12VDC power panel.



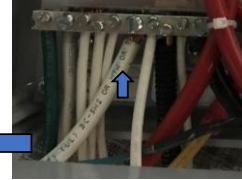
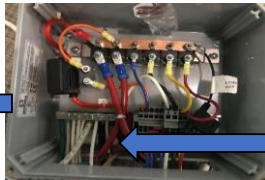
Drill out the three rivets in the entry doors threshold and remove the threshold.



Run a fish tape from the corner of the galley cabinet, to the drawer below the microwave, and then to the wardrobe. Pull the 6-gauge wire through the galley cabinet to the doorway.



Continue to run the wire under the fire extinguisher, through the bottom of the convector cover, and under the lounge to the 12VDC panel. You may need to drill out the rivets in the convector cover and remove the



Remove the old, white ground wire (6 gauge) that runs to the power center and connect the new 6-gauge wire that was just ran. Here you will also connect the 14-gauge wire that was ran from the Alde boiler to the grounding block. Torque the wires to 25-35 inch-pounds. Make sure to check the rest of the wires in the grounding block at this time.

After completion, reinstall any items that may have been taken apart.

# Airstream Service Bulletin

Bulletin Number: 180

Use Operation Code: **TTSBR8376079**

Product Line: 33' Airstream Classic

Subject: Alde Fluid Replacement & Service Maintenance

Airstream and Alde are promoting a Technical Service Bulletin to replace the glycol in 2018, 2019 and early 2020 Classics to a new Alde fluid. The new glycol fluid has been improved for better performance. In addition to replacing the glycol, two grounds will also need to be added to the system. Some units may have one ground already installed.

Alde will be sending a pump kit to all of our travel trailer dealerships. To get glycol please call Airstream Tech Support at 877-344-1076 and use prompt-1 to order a five-gallon bucket of glycol to perform this service bulletin. Glycol part number: 360371-201C

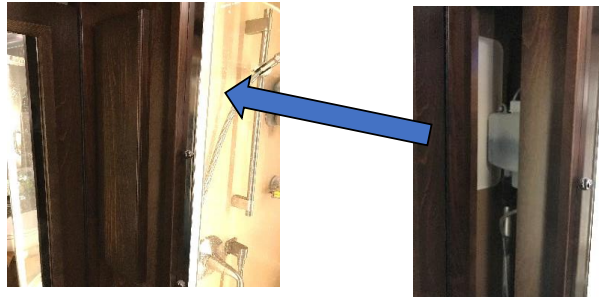
Alde uses a Service Pump Kit which includes two pumps to aid in adding and removing glycol. Airstream recommends using this service kit when replacing the

## Alde Service Kit Includes:

- 30' service pump kit
- Spring clip pliers
- Hose pinch pliers
- Aluminum flushing tube
- Clear hose 22mm
- 10mm Cap
- 22mm Cap



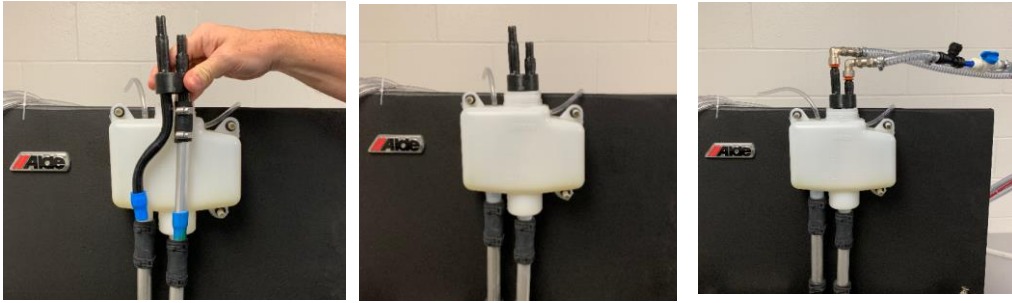
The first step in flushing the system is to locate the expansion tank.



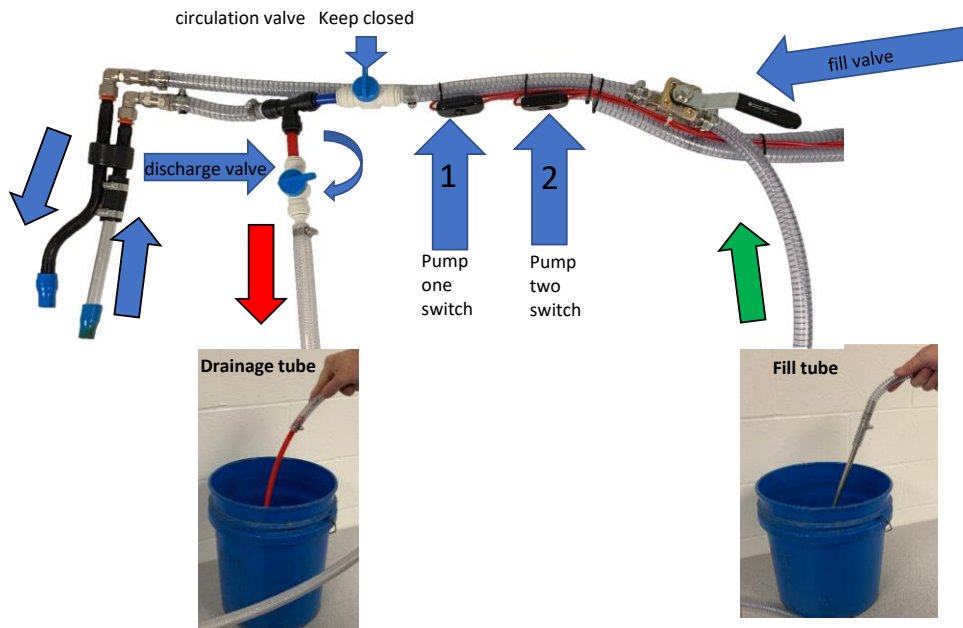
The 33' Classic's tank is behind a removable panel, in the bathroom, between the shower and the bathroom door.



### Alde Flushing Procedure:

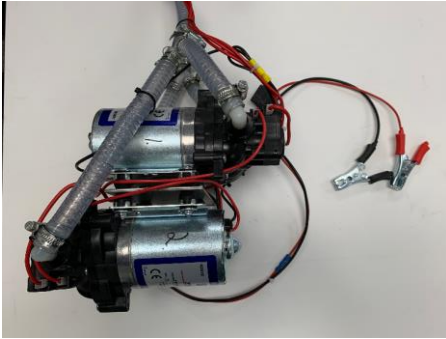


Insert the service pump adapter into the expansion tank and connect the two leads. The pump adapter will fit snug into the in and out pipes of the expansion tank. It is important to note that the lead with the discharge valve connects to the straight tube.



Insert the drainage tube into an empty 5-gallon bucket. Make sure to empty the bucket when flushing if you are using more than 5 gallons of water.

Fill a clean 5-gallon bucket with clean tap water to flush the system. You may need to run 5 to 10 gallons of water to thoroughly flush the system.



Connect the alligator clamps to a battery; red for positive and black for negative.

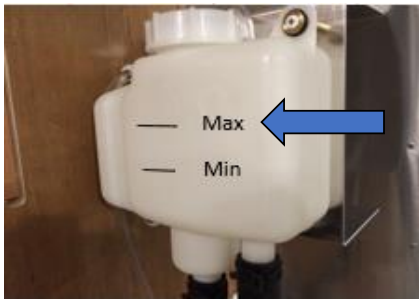
Before turning ON the pumps, open the discharge valve and make sure the fill valve handle is pointing towards the fill hose that goes to the clean water bucket. Turn ON pump-1 until fluid starts to run into the discharge bucket. Once the fluid is flowing, turn ON pump-2 to speed up the flushing process. Continue to flush the glycol until you see water flowing into the discharge bucket.

### **Alde Glycol Filling Procedure:**

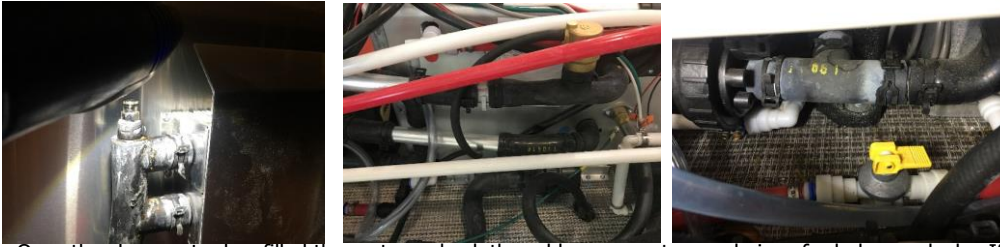
Insert the drainage tube into an empty 5-gallon bucket. Make sure to empty the bucket when filling to prevent overflow.

Insert the fill tube into a clean 5-gallon bucket of new glycol.

When filling the system with glycol, follow the same process used to flush the system. First, make sure the discharge valve is open and the fill valve handle is pointing towards the glycol bucket hose. Turn ON pump-1 until fluid starts to run into the discharge bucket. Once the fluid is flowing, turn ON pump-2 to speed up the filling process. Continue to fill the system until you see glycol flowing into the discharge bucket.



Once the system is full of new glycol, remove the service pump adapter. Fill the expansion tank to the max line to begin the bleeding process. When finished bleeding the glycol should be filled to one inch above the minimum line.

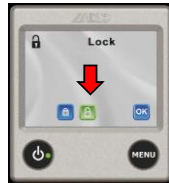


Once the clean water has filled the system, check the rubber connectors and pipes for bulges or leaks. If bulges or leaks are found contact Airstream Tech Support at 877-344-1076, prompt-1, for further

**3010 Alde controls:** To bleed the air out of the system you will need to turn the cycle pump on and off from continuous.



Turn ON the Alde panel and make sure the heater is turned OFF. Blue is the OFF position. Tap the key (or wrench) icon in the bottom right corner.



If the key icon is visible you will have to unlock the control pad to get to the next screen. If the wrench icon is displayed it will go directly to the next screen.



Select the pump cycle button.



Select "Continuous" to turn the pump ON. Run the pump for about 15 minutes, filling the expansion tank as needed. (Remember to set the pump back to "Thermal" when finished)

**3020 Alde controls:**



Turn ON the Alde panel and make sure the heater is turned OFF. Blue is the OFF position. Tap the gear icon in the bottom right corner.



Select the pump cycle button.



Select "Continuous" to turn the pump ON. Run the pump for about 15 minutes, filling the expansion tank as needed. (Remember to set the pump back to "Thermal" when finished)



There are several bleeder valves throughout the system but only a few are easy to access. To bleed the system, turn the valve counter-clockwise to let air out. After bleeding, close the valve and make sure it is tight. After each bleeder valve has been bled check the level of glycol in the expansion tank.

**Make sure the pump is OFF, when opening the bleeder valves, to prevent air from being pulled in**  
**33' Classic Bleeder Valve Locations:**



The first two bleeder valves are behind the lounge.



The rear grate panel can be lifted up to access the bleeders.



The next bleeder valve is located in the bathroom, on the right side of the towel bar.



The bleeder valve under the lavatory cabinet is behind the side panel and is accessed by reaching over the top.



The bleeder valve under the desk is behind a removable access panel.



A bleeder valve is located under the galley sink cabinet.



**33' Classic - Queen:**



On both bedroom walls is an access panel for the bleeder valves located there.

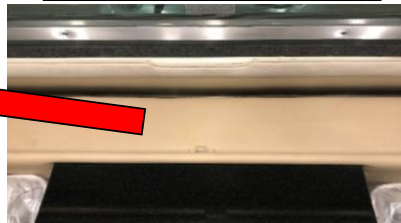


Inside both night stands are bleeder valves. Remove the drawer to access.

**33' Classic - Twin:**



On both bedroom walls, above the bed tops, are access panels for the bleeder valves.



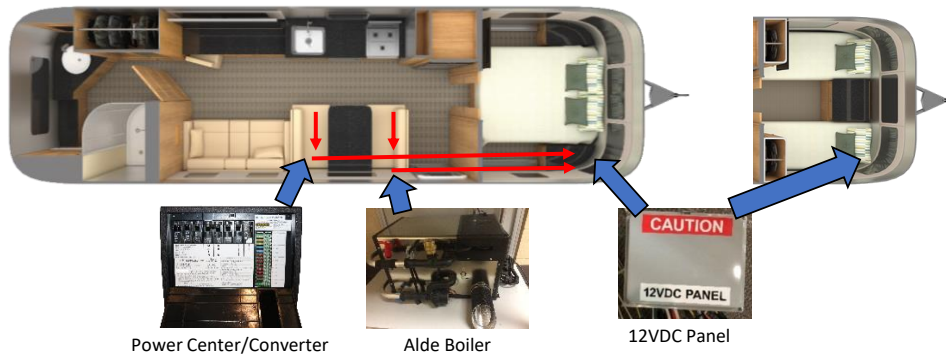
The last bleeder valves are at the head of each bed. Access is gained by a removable center panel.



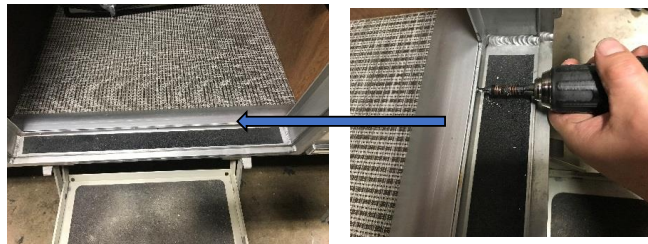
After the system has been bled, make sure the glycol level is at the max line. This process may need to be repeated a few times to get all the air out of the system. Raising and lowering the front of the trailer before starting this process again may help in moving the air to the bleeder valves.

## Adding Grounds to the 33' Classic:

The following instructions are steps to add two isolated grounds to the 33' Classic trailer. One from the Alde boiler to the 12VDC panel and a second from the converter to the 12VDC panel.



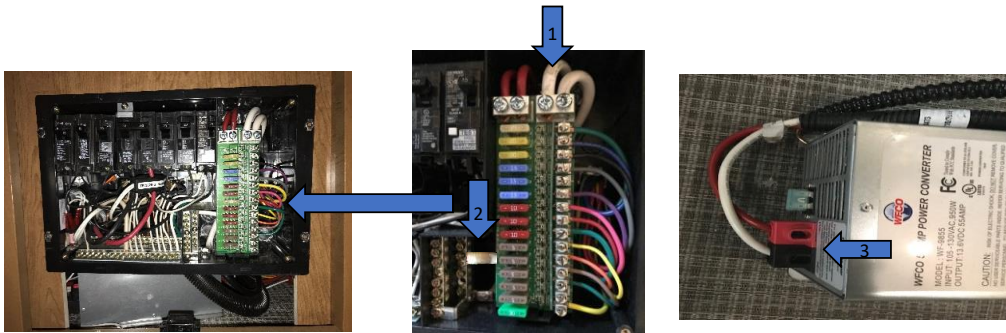
On the 33' Classic, the Alde boiler is located under the dinette seat next to the main door. The converter is hidden under the dinette seat closest to the lounge.



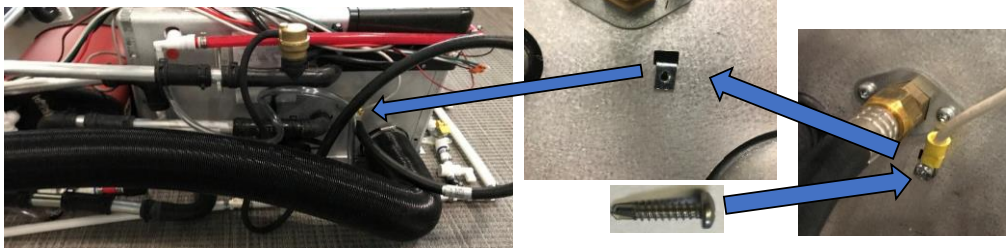
Begin by drilling out the three rivets in the entry doors threshold and remove the threshold.



The 12VDC power panel can be accessed through the front exterior compartment door. Remove the screws to the panel cover and move the panel out of the way. Slide the inverter and power center away from the side of the wall to prevent drilling into it in the following steps.



Remove the panel below the dinette seat to gain access to the power center and converter. Two wires will need to be removed from the power center. The first, wire-1 (6gauge) in the picture above, runs to the 12VDC power panel under the bed. The second, wire-2 (8 gauge), runs to the converter. A third white wire, wire-3 (8 gauge), will need to be removed from the converter. Cap off all three wires, as they will not be used. Run a new 6-gauge ground wire connected directly to the converter, torqued to 25-35 inch-pounds, and run straight to the 12VDC power panel.



Attach the end of a 14-gauge wire to the Alde boiler case using a self-taping 3/4" #8 screw.  
Part number: 320111

### 33' Classic Wire Routing - Queen:

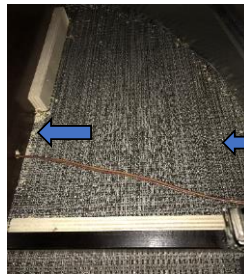


Drill out the rivets on the convector cover to remove the face. The wires will run through the bottom of the convector to the night stand.

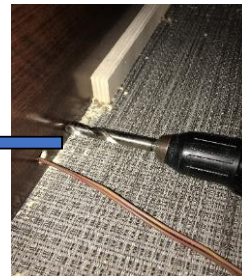




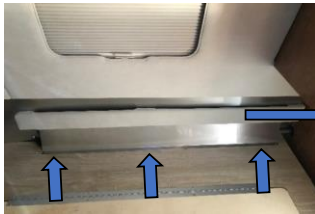
Remove the four screws from the bottom shelf of the night stand and remove the shelf.



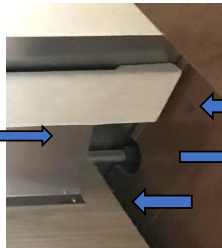
Drill a 1/2" hole halfway between the brown wires and the wood batt for the shelf. **Make sure you have moved the electrical components away from the other side of this panel before drilling.**



### 33' Classic Wire Routing - Twin:



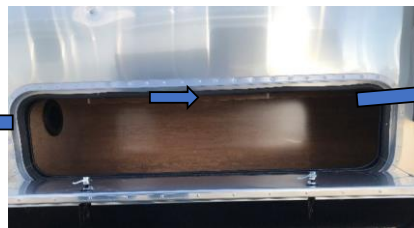
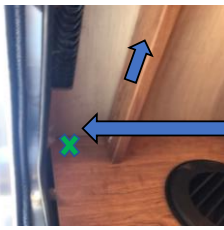
Remove the three screws from the convector cover alongside the twin mattress.



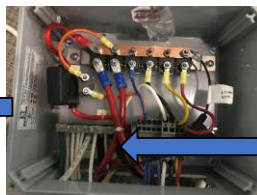
Remove the two screws on the panel cutout for the wall access.



Fish the wire from the access to the threshold.



Drill a 1/2" hole in the upper corners of the curb side exterior compartment to run the wire through. Attach the wire to the cross support using wire clamps.



Remove the old, white ground wire (6 gauge) that runs to the power center and connect the new 6-gauge wire that was just ran. Here you will also connect the 14-gauge wire that was ran from the Alde boiler to the grounding block. Torque the wires to 25-35 inch-pounds. Make sure to check the rest of the wires in the grounding block at this time.

After completion, reinstall any items that may have been taken apart.