



Technical Bulletin

Model(s)	Year	Eng. Code	Trans. Code	VIN Range From	VIN Range To
Jetta	2019	All	All	BU_KM003327	BU_KM121652

Condition

50 18 05 November 7, 2018 **2052766** Supersedes Technical Bulletin 50-18-04 (V501804) dated October 30, 2018 to include additional service procedures and update VIN range.

Water Leak - Driver or Passenger Floor Board

Water in the driver and or passenger floor board area.



Note:

This bulletin must be read in its entirety before beginning repair.

Technical Background

Water leak due to improper application of body seam sealer.

Production Solution

Apply seam sealer at the seam of the plenum chamber and A-pillar as of VIN: BU_KM121653.

Service

Procedure

1. Remove the windshield wiper arms according to Repair Manual group 92 Windshield Wiper/Washer System / Windshield Wiper System / Windshield Wiper Arms, Removing and Installing.
2. Remove the plenum chamber cover according to Repair Manual group 50 Body Front / Bulkhead / Plenum Chamber Cover, Removing and Installing.
3. Remove the windshield wiper motor assembly according to Repair Manual group 92 Windshield Wiper/Washer System / Windshield Wiper Motor V, Removing and Installing.
4. Remove the HVAC fresh air intake water deflector on the passenger side.



Note:

Working surfaces should be cleaned and dried prior to adding seam sealer.



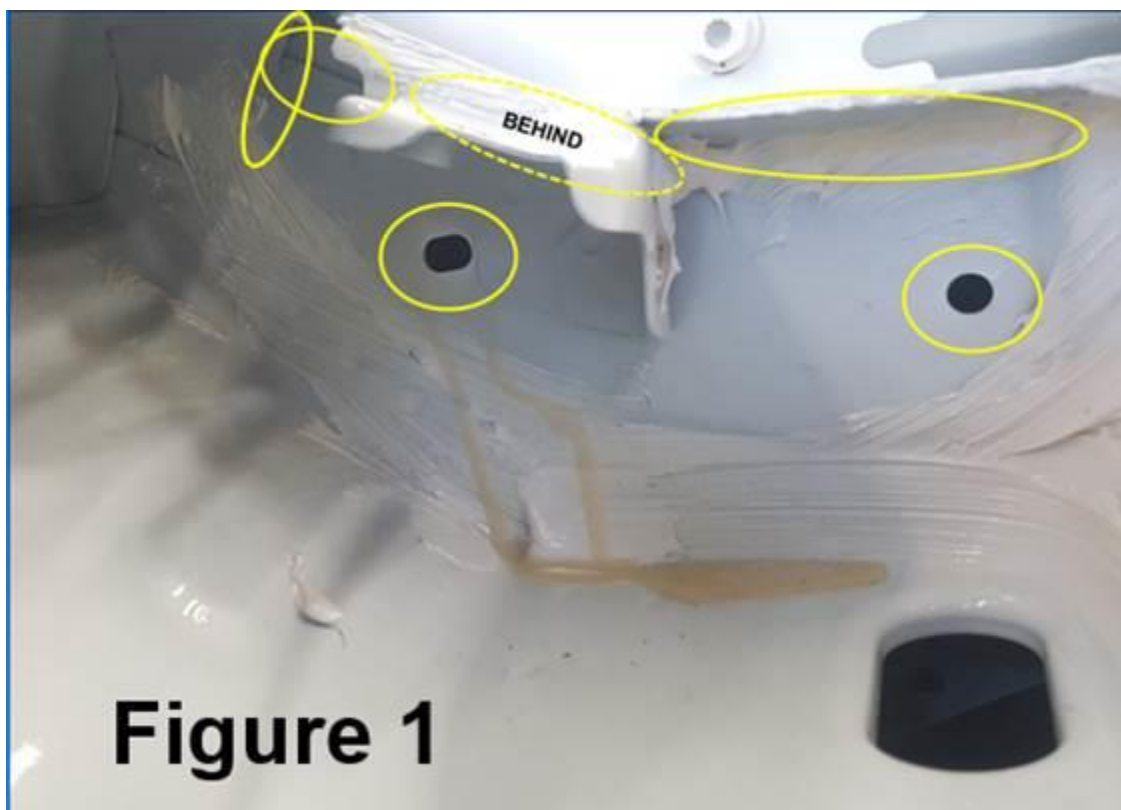
Technical Bulletin



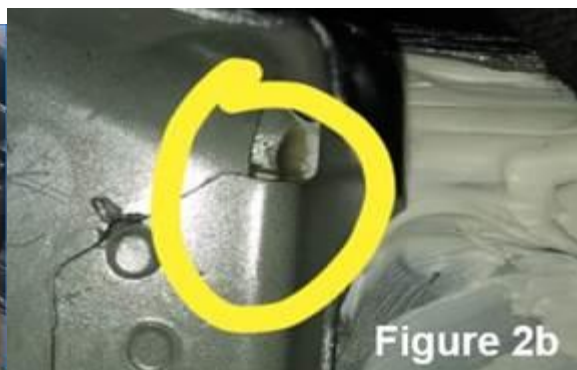
WARNING:

Always follow the product manufactures handling and disposal instruction.

5.1 Apply seam sealer in the areas marked for the driver side (Figure 1).



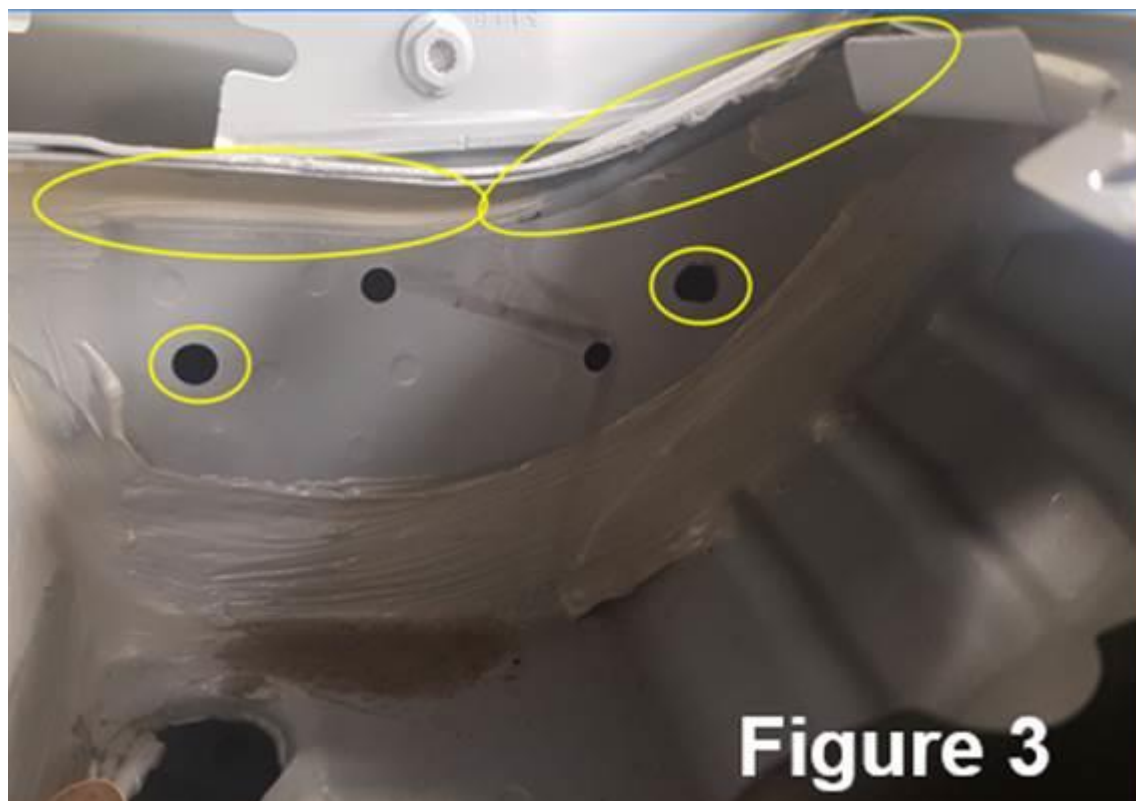
5.2 For the area behind the windshield wiper motor support bracket, apply seam sealer with your finger (Figure 2a) to cover the seam (Figure 2b).





Technical Bulletin

6. Apply seam sealer in the areas marked for the passenger side (Figure 3).



7. Apply seam sealer, through the plenum chamber drain openings, in the marked areas on both driver (Figure 4) and passenger side (Figure 5).



8. Reassemble in the reverse order of disassembly.



Note:

Park vehicle in dry area as the seam sealer will require a minimum of 24hrs to properly cure.



Technical Bulletin

Warranty

To determine if this procedure is covered under Warranty, always refer to the Warranty Policies and Procedures Manual ¹⁾					
Model(s)	Year(s)	Eng. Code(s)	Trans. Code(s)	VIN Range From	VIN Range To
Jetta	2019	All	All	BU_KM003327	BU_KM121652
SAGA Coding					
Claim Type:		Use applicable Claim Type ¹⁾			
Service Number:	Damage Code	HST	Damage Location (Depends on Service No.)		
5158	0050	--	--		
Parts Manufacturer		Jetta		K21 ²⁾	
Labor Operation ³⁾ : Remove and Install (2) Wiper Arms			92252000 = 40 TU		
Labor Operation ³⁾ : Remove and Install Cowl Panel Trim			66442050 = 20 TU		
Labor Operation ³⁾ : Remove and Install Wiper Linkage			92191950 = 10 TU		
Labor Operation ³⁾ : Remove and Install Wiper Motor Assembly			92151950 = 10 TU		
Labor Operation ³⁾ : Wiper Arm Adjust			92251600 = 20 TU		
Labor Operation ³⁾ : Remove and Install Plenum Chamber Water Deflector			51581950 = 10 TU		
Labor Operation ³⁾ : Apply Seam Sealer			50535299 = 10 TU		
Causal Part: Select Labor Operation			50535299		
Diagnostic Time ⁴⁾					
GFF Time expenditure	01500000 = Actual GFF print out		NO		



Technical Bulletin

Road Test	01210002 = 00 TU 01210004 = 00 TU	NO
Technical Diagnosis	01320000 = 00 TU max.	NO
Claim Comment: Input "As per Technical Bulletin 2052766" in comment section of Warranty Claim.		
<ol style="list-style-type: none"> 1) Vehicle may be outside any Warranty in which case this Technical Bulletin is informational only 2) Code per warranty vendor code policy. 3) Labor Time Units (TUs) are subject to change with ELSA updates. 4) Documentation required per Warranty Policies and Procedures Manual. 		

Required Parts and Tools

Part No:	Part Description	Quantity
D 476KD1M2 ¹⁾	VW Body Seam Sealer - Gray	1
OR		
D 476KD2M2 ¹⁾	VW Body Seam Sealer - Black	1
Part Numbers are accurate at time of publication. Always refer to ETKA for the latest part information.		

No special tools required.

Please use one of the below options:

VW Body Seam Sealer - D 476KD1M2 - Grey

VW Body Seam Sealer - D 476KD2M2 - Black



Note:

If one of the above cannot be procured please use an equivalent body seam sealer.



Technical Bulletin

Additional Information

All part and service references provided in this Technical Bulletin are subject to change and/or removal. Always check with your Parts Dept. and Repair Manuals for the latest information.

Document Control Revision Table			
Instance Number	Published Date	Version Number	Reason For Update
2052766/2	11/7/18	V501805	Additional service procedures and update VIN range.
2052766/1	10/31/18	V501804	Original publication.