



## Technical Service Bulletin

<b>GROUP</b>	<b>NUMBER</b>
<b>INTERIOR</b>	<b>19-BD-004G-1</b>
<b>DATE</b>	<b>MODEL(S)</b>
<b>OCTOBER 2019</b>	<b>G80 (DH)</b>

**SUBJECT:** SEAT BACKBOARD CLIP REPLACEMENT

This TSB supersedes TSB # 19-BD-004G to modify the causal parts in the Warranty Information.

**Description:** Certain 2019-2020 G80 (DH) vehicles may have a condition where the seat backboard comes loose. This bulletin describes the procedure to replace the seat backboard clip.



**Applicable Vehicles:** 2019MY-2020MY G80 (DH)

### Parts Information:

Parts Name	Part Number	Qty.
CLIP ASSEMBLY		1
	88399-B1000FFF	

Circulate To: General Manager, Service Manager, Parts Manager, Warranty Manager, Service Advisors, Technicians, Body Shop Manager, Fleet Repair

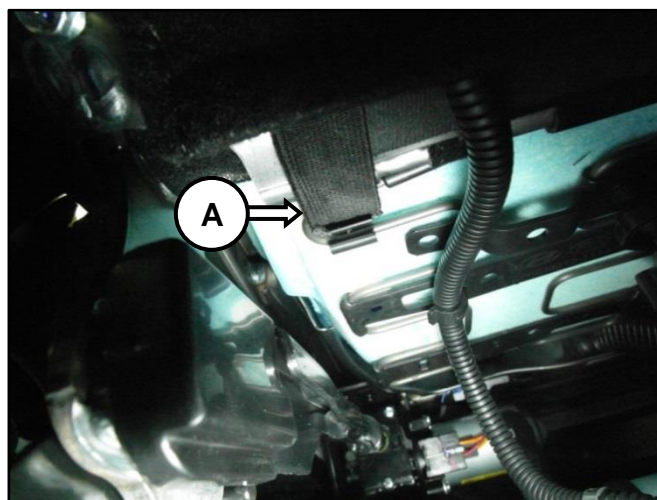
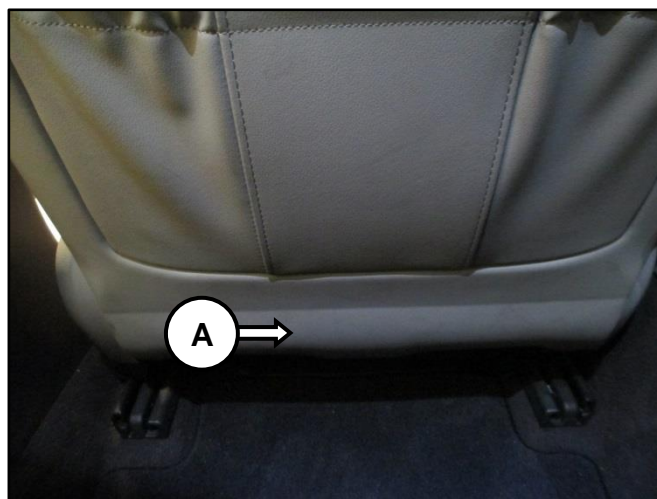
**Warranty Information:**

Model	Op. Code	Operation	Op. Time	Causal Part	Nature Code	Cause Code
G80 (DH)	88399F00	SEAT BACKBOARD MOUNTING CLIP REPLACEMENT (1~2EA)	0.3	88380-B1000-*** 88380-B1100-***	I86	ZZ6
	88399F01	SEAT BACKBOARD MOUNTING CLIP REPLACEMENT (3~4EA)	0.5			

**Note:** \*\*\* = include color designation to part number when submitting claim.

**Service Procedure:**

1. Remove the protector (A) bottom straps located under the seat.

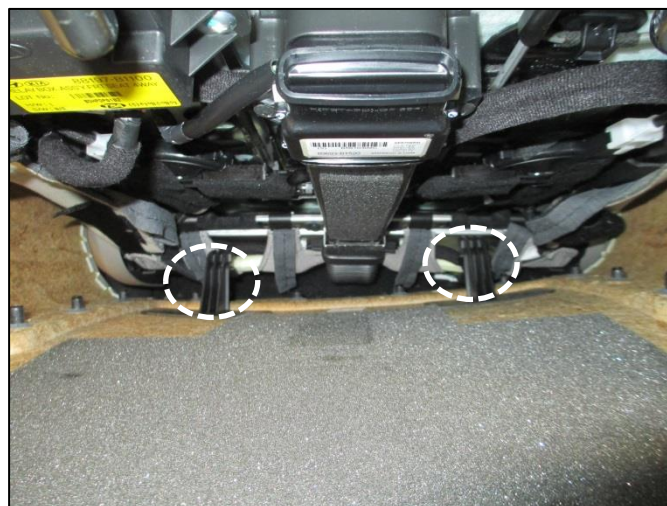


2. Place both hands at the bottom of seat backboard (B) and lift to remove from the seat assembly.

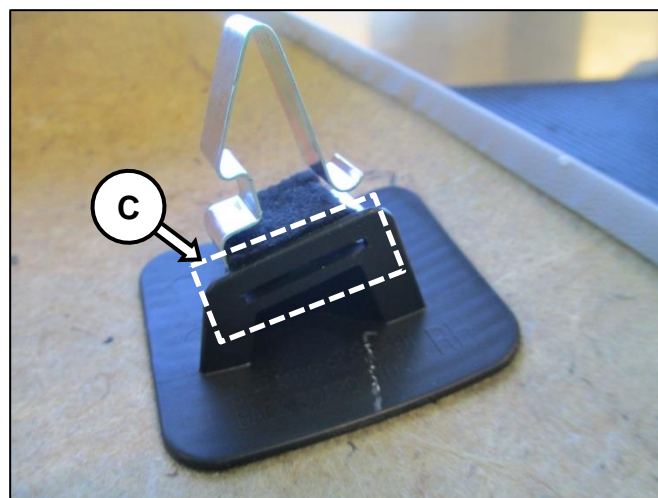


**⚠ CAUTION**

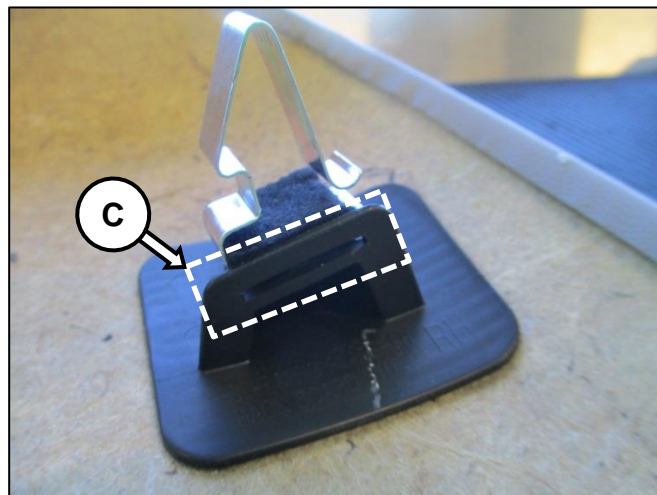
When removing, ensure not to damage bottom seat back retention hooks.



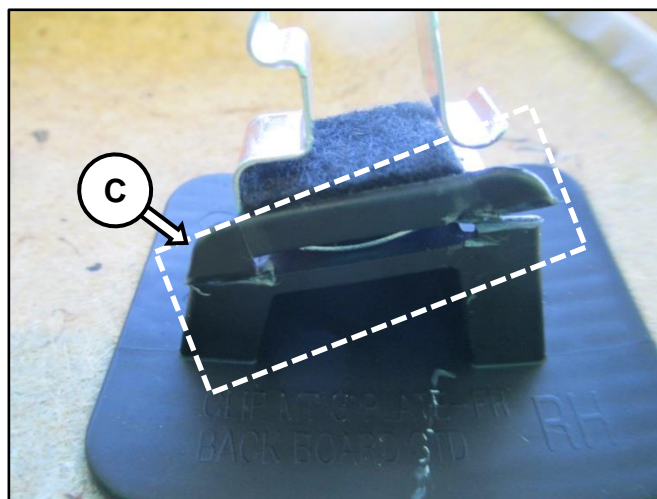
3. Lay the seat backboard on a clean workbench and inspect base clips (C).



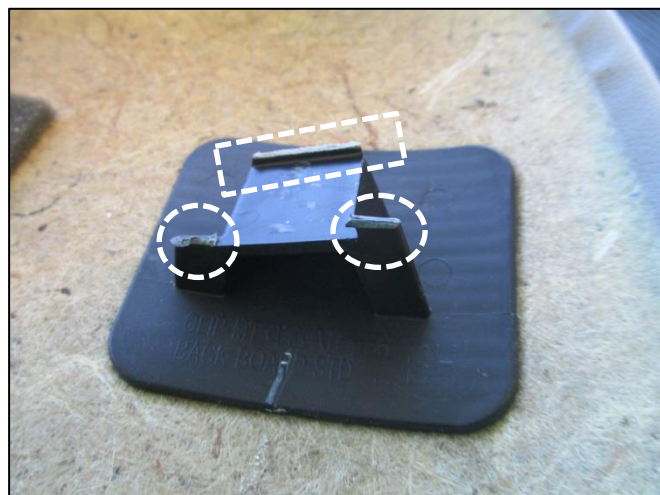
Base clip (C) appears normal.

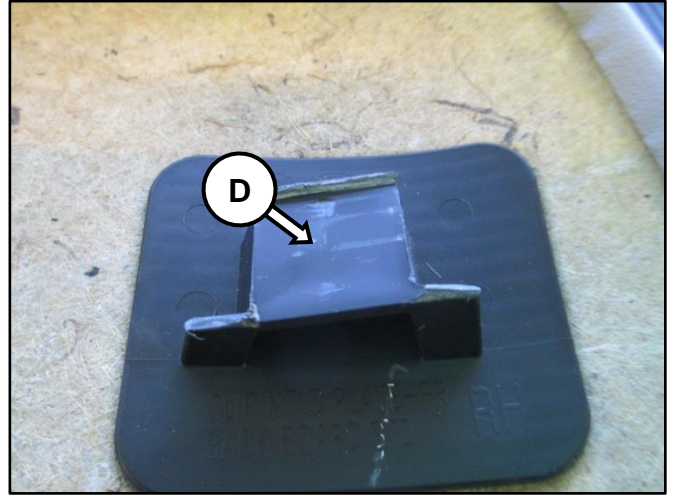


Base clip (C) is broken.

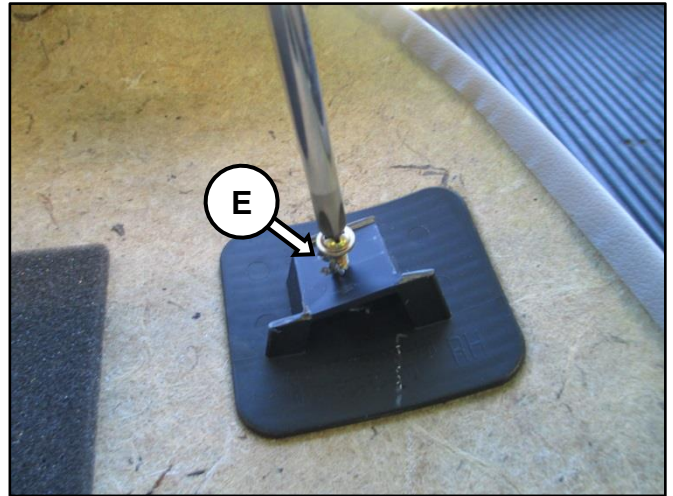


4. Remove broken base clip (C) and remove excess plastic to ensure base (D) is flat.





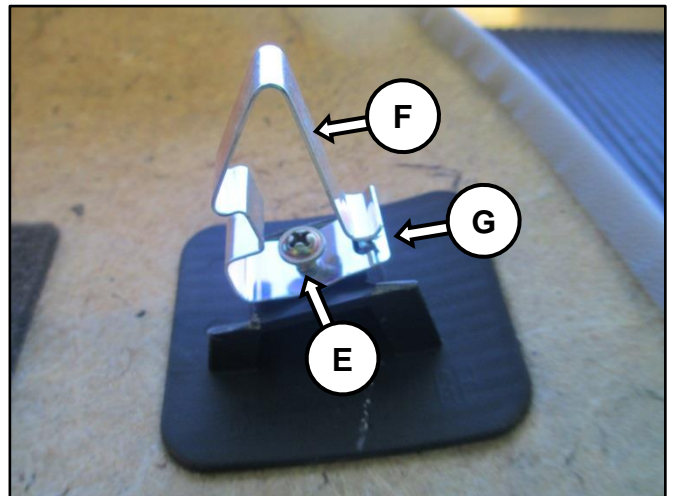
5. Tighten supplied screw (E) to half screw length in the center of the base.



6. Assemble screw (E) into the supplied new clip (F) and fully tighten to base.

**NOTICE**

Ensure opening (G) of clip is facing upward.



7. Reinstall seat backboard to seat assembly and reattach the protector straps.

