

# HDD Navigation Map Update Process (EMV-N)

**Service Category** Audio/Visual/Telematics

**Section** Navigation/Multi Info Display

**Market** USA

Lexus Supports  
ASE Certification 

## Applicability

YEAR(S)	MODEL(S)	ADDITIONAL INFORMATION
2013	CT200H, IS250, IS350	
2013 - 2014	ES300H, ES350, GS350, GS450H, IS F, LS460, LS600H	
2013 - 2015	IS250C, IS350C, LX570, RX350, RX450H	

### REVISION NOTICE

**December 10, 2019 Rev2:**

- The Parts Information and Required Tools & Equipment sections have been updated.

**November 14, 2018 Rev1:**

- The Parts Information and Required Tools & Equipment sections have been updated.

Any previous printed versions of this bulletin should be discarded.

### SUPERSESSION NOTICE

The information contained in this bulletin supersedes SB No. L-SB-0074-14.

- The Part Information and Required Tools & Equipment, and On-Vehicle Data Navigation Update sections have been updated.

Service Bulletin No. L-SB-0074-14 is obsolete and any printed versions should be discarded.

## HDD Navigation Map Update Process (EMV-N)

### Introduction

Lexus models equipped with the HDD Navigation (EMV-N) system require a Special Service Tool (SST) USB drive to update the map, points of interest, Gracenote®, and system software. The SST is used with all vehicles to deliver the update; however, a unique activation number is required for each vehicle. Activation numbers are provided in an Activation Card Number pamphlet available through the normal parts ordering system. Use the process described in this bulletin to perform the update.

**NOTE**

- Gracenote® information **MUST** be updated at the same time as map data. This data is included on the map data SST.
- Map data will be released annually through the shipment of a USB drive SST to each dealer. The SST **MUST** be stored in the SST cabinet to ensure that it can be easily found.

### Warranty Information

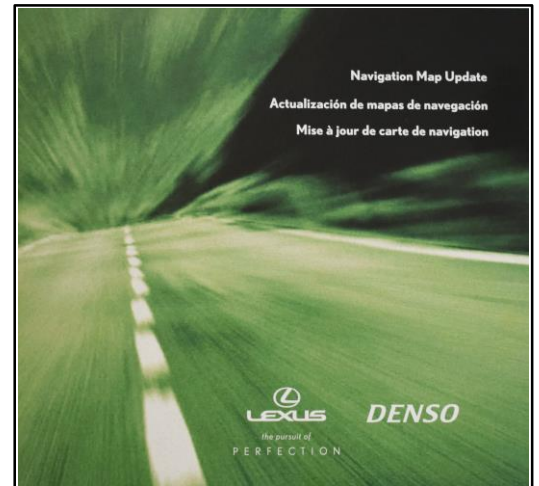
OP CODE	DESCRIPTION	TIME	OFF	T1	T2
N/A	Not Applicable to Warranty	–	–	–	–

### Parts Information

PART NUMBER	PART NAME	QTY
PT219-HDD07-19	ACN NAV Update V.19.1 (Pamphlet)	1

**NOTE**

The pamphlet is green with Lexus and Denso labels on the front cover.



## HDD Navigation Map Update Process (EMV-N)

### Required Tools & Equipment

SPECIAL SERVICE TOOLS (SST)	PART NUMBER	QTY
USB Drive Navigation Map Update – Denso*	<a href="#">LEXD-HDD07-19</a>	1

\*Essential SST.

**NOTE**  
Additional SSTs may be ordered by calling 1-800-933-8335.

### On-Vehicle Data Navigation Update

- Update Gracenote® information using Service Bulletin [L-SB-0169-17](#), HDD Navigation Gracenote Database Update Process (EMV-N).

**HINT**  
Connect a battery charger to the vehicle prior to beginning the process to ensure constant battery voltage.

- Log in to the Technical Information System (TIS).
- Log in to the Navigation Update Wizard.
  - Click on the TIS tab.
  - Click on the Diagnostics tab.
  - Click on the Navigation tab.
  - Re-enter your password.
  - Click Login.

**Figure 1.**



- Select Denso from the Select Navigation Manufacturer dropdown.

**Figure 2.**

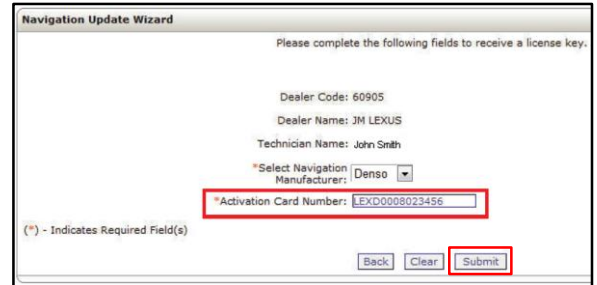


## HDD Navigation Map Update Process (EMV-N)

### On-Vehicle Data Navigation Update (continued)

5. Enter the activation card number from the inside of the pamphlet.

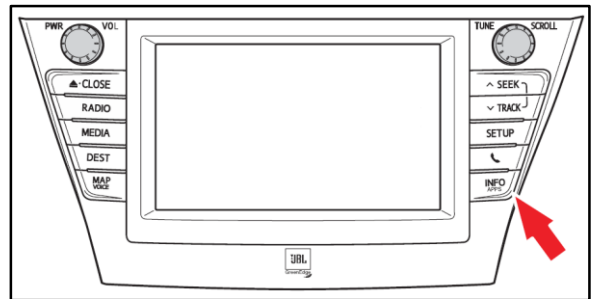
**Figure 3.**



6. Click Submit.
7. Press the Engine Start Stop switch two times with the brake pedal released to cycle the ignition to the ON position (Engine/Hybrid system OFF).
8. Note the head unit style to determine how to get to the Map Data screen.

- A. Press the Info Apps button on the navigation head unit.

**Figure 4.**



- B. Press Menu on the remote touchpad, then select Info/Apps.

**Figure 5.**



## HDD Navigation Map Update Process (EMV-N)

### On-Vehicle Data Navigation Update (continued)

9. Select Map Data on the navigation screen.

Figure 6.



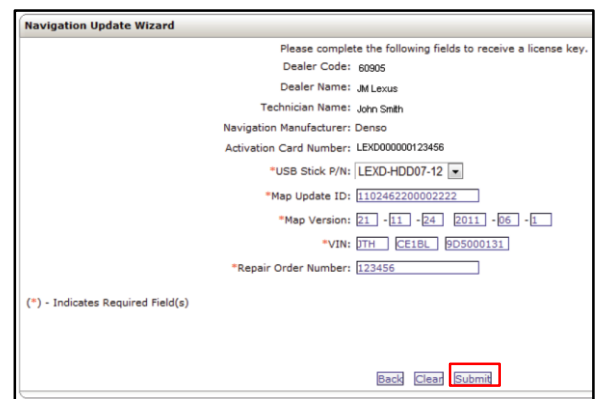
10. Record the map version and map update ID from the navigation screen.

Figure 7.



11. Enter navigation data into the Navigation Update Wizard form.
  - A. Select the correct USB part number (found on the SST packaging, starts with "LEXD").
  - B. Input the map update ID into TIS (without hyphens).
  - C. Input the map version into TIS.
  - D. Enter the VIN.
  - E. Enter the repair order number.
  - F. Click Submit.

Figure 8.

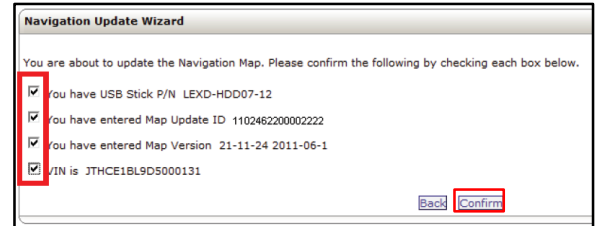


## HDD Navigation Map Update Process (EMV-N)

### On-Vehicle Data Navigation Update (continued)

- Check off each item AFTER confirming that it is correct. If ANY of the information is incorrect, click the Back button.

**Figure 9.**



- Click Confirm.

- Note the license key that is generated. (Print this page if necessary.)

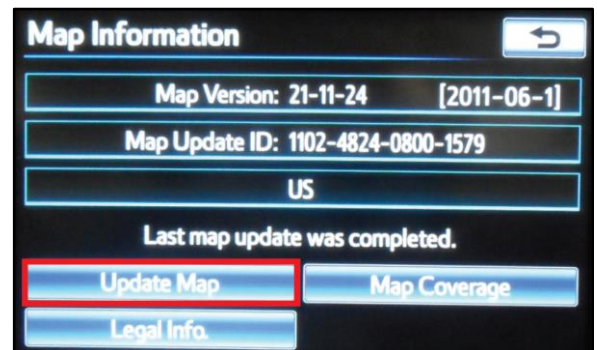
**Figure 10.**



- Insert the USB drive SST into the USB port of the vehicle (usually located under the navigation head unit, in the center console/armrest, or glove box).

- Select Update Map on the navigation screen.

**Figure 11.**

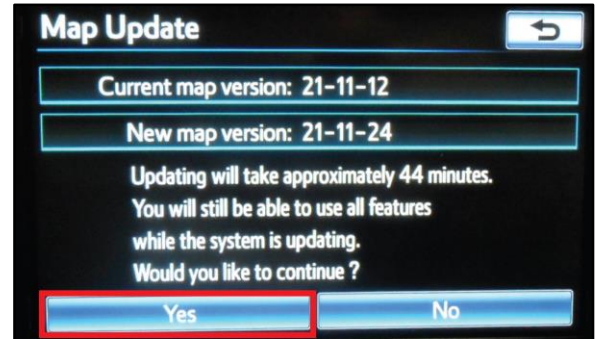


## HDD Navigation Map Update Process (EMV-N)

### On-Vehicle Data Navigation Update (continued)

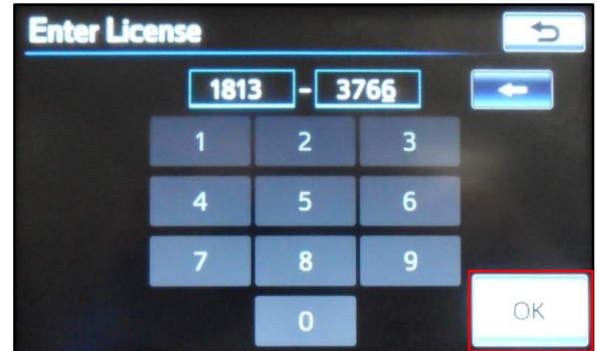
17. Select Yes.

Figure 12.



18. Enter the license key from step 14.

Figure 13.



19. Select Ok.

20. Update the navigation head unit software. Select Yes on the Software Update screen to accept and begin this update.

If the head unit displays the Map Update screen, continue to step 21.

**NOTE**  
Navigation map data will be loaded when this process completes.

Figure 14.

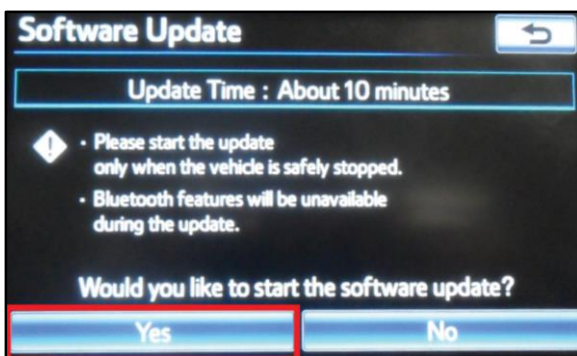
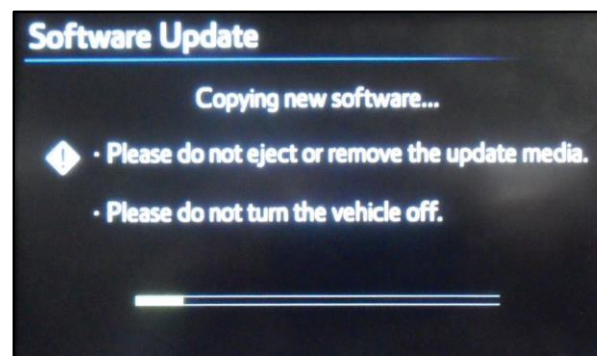


Figure 15.



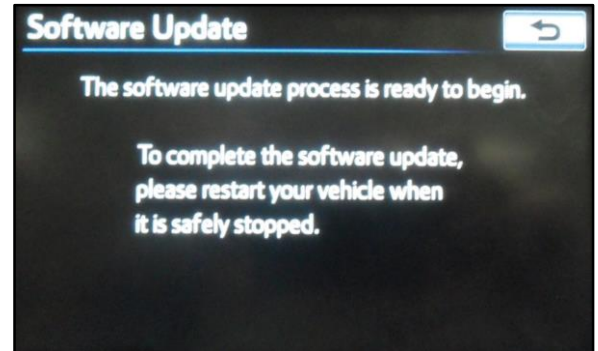


## HDD Navigation Map Update Process (EMV-N)

### On-Vehicle Data Navigation Update (continued)

- A. Cycle ignition OFF, then ON (Ready OFF/Engine OFF).

**Figure 16.**

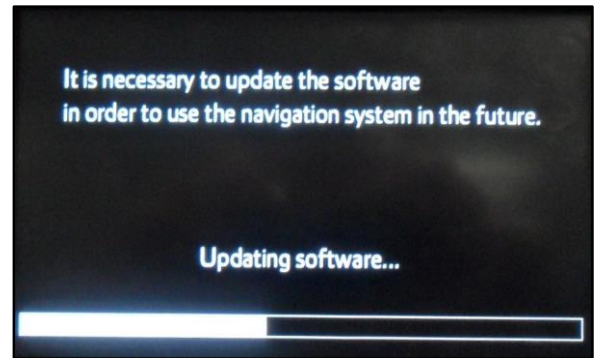


- B. Allow the update to complete.

**NOTE**

This process will take approximately 10 minutes.

**Figure 17.**



- C. The head unit will prompt to cycle ignition. Cycle ignition OFF and then ON (Ready OFF/Engine OFF).

- D. Press the Info Apps button.

**Figure 18.**



- E. Select Map Data on the navigation screen



## HDD Navigation Map Update Process (EMV-N)

### On-Vehicle Data Navigation Update (continued)

21. The navigation map update will begin automatically.

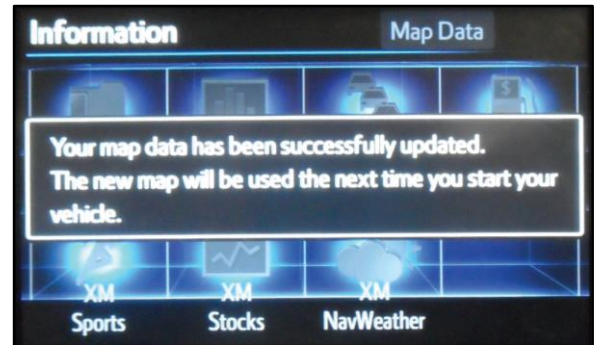
**NOTE**  
This process will take approximately 45 minutes.

**Figure 19.**



22. The NEW map data will be available AFTER the ignition is cycled. Cycle ignition OFF, then ON (Ready OFF/Engine OFF).

**Figure 20.**



23. Remove the USB drive SST from the vehicle to complete the map update.

24. The map update is complete.

**Figure 21.**



25. Verify navigation operation.