



SIM 22 03 17

2019-12-30

CREAKING NOISE FROM THE LOWER ENGINE AREA

This Service Information Bulletin (Revision 1) replaces SI M22 03 17 **dated January 2018**.

What's New (Specific text highlighted):

- Warranty information
- Model production range updated

MODEL

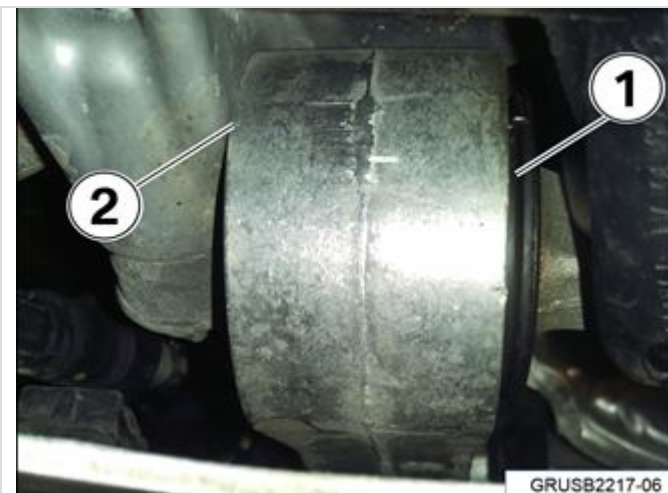
F54 (MINI Clubman)	F55 (MINI Hardtop 4 Door)	F56 (MINI Hardtop 2 Door)	F57 (MINI Convertible)
Produced up to July 2017			

SITUATION

During load reversal or taking off from a stop, there is a creaking or droning noise heard from the lower engine area.

CAUSE

The bushing in the lower engine stabilizer link is working its way out of its aluminum housing, thereby rubbing against the engine oil pan.



The bushing in the lower engine stabilizer link (1) is working its way out of its aluminum housing. The aluminum housing starts to rub against the engine oil pan (2).

PROCEDURE

Confirm the noise is coming from the lower engine stabilizer link and replace the link. Refer to Repair Instruction 22 11 095 "Removing and installing/replacing holder with rubber mount".

PARTS INFORMATION

Refer to the most current version of ETK.

NOTE: The replacement stabilizer link needs to be Index 02 or higher.



Obtain and confirm the part numbers for your specific vehicle by entering the chassis number in either ETK or AIR which takes into account specific equipment and/or options.

WARRANTY INFORMATION

Covered under the terms of the MINI New Passenger Car Limited Warranty.

Defect Code:	2211113900	Engine anti-roll bar link, bottom (on anti-roll bar link holder, front subframe or rear axle module) Disruptive noises	
Labor Operation	Description	Labor Allowance	
22 11 095	Remove and install/replace holder with rubber mount (Main work)	Refer to AIR	
Or:			
22 11 595	Remove and install/replace holder with rubber mount (Plus work)	Refer to AIR	
And, as necessary:			
22 99 000	Work time to confirm the issue/inspecting the lower engine stabilizer link	Work Time (WT)	

If you are using a Main labor code for another repair, use the Plus code labor operation 22 11 595 instead of 22 11 095.

Work time labor operation code 22 99 000 is not considered a Main labor operation; however, it does require an individual punch time and an explanation on the repair order and in the claim comments section.