



## SIB 11 16 18

2019-12-19

### DELIVERY STOP: N63R AND N63M ENGINE - CHECK ENGINE OIL SUPPLY CIRCUIT FOR CONTAMINATION

Please perform the procedure outlined in this Service Information on all affected vehicles before customer delivery. In the event the customer has already taken delivery of the vehicle, please perform the procedure the next time the vehicle is in the shop.

This Service Information Bulletin (Revision 6) replaces SI B11 16 18 **dated December 2018**.

#### What's New (Specific text highlighted):

- Parts table updated with oil pressure sensor part numbers and pictures
- Work packages and sublet amount added

## MODEL

E-Series	Model Description	Production Date
G05	X5 xDrive50i Sports Activity Vehicle with N63M engine	August 1 to September 24, 2018
G12	750iL and 750iL xDrive Sedan with N63R engine	June 26 to September 24, 2018
G30	M550i xDrive Sedan with N63R engine	June 26 to September 24, 2018

## AFFECTED VEHICLES

Vehicles which require this Recall Campaign to be completed will show it as "Open" when checked either in AIR, the "Service Menu" of DCSnet (Dealer Communication System) or with ISPA NEXT. Recall letter and Q&A are attached.

**Do not deliver to a customer, a New, Certified Pre-Owned or Used vehicle subject to a Delivery Stop, until the vehicle is repaired. Do not use or sell replacement equipment/parts subject to a Delivery Stop.**

## SITUATION

The engine oil pan and oil lubrication circuit may be contaminated with metal debris from the engine manufacturing process.

## CORRECTION

Inspect the engine oil pressure sensor and solenoid valve for contamination. Repair as needed.

## PROCEDURE

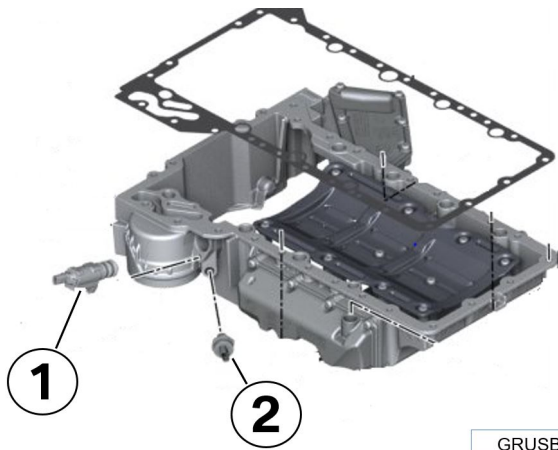
1. Remove the engine oil pressure sensor and the solenoid valve for oil pressure control as per the following repair instructions.

Repair Instruction 12 61 280 "Removing and installing/replacing oil pressure switch".

And-

Repair Instruction 11 41 115 "Removing and installing/replacing solenoid (hydraulic) valve for oil pressure control".

	<p>The components are installed on the right side of the upper oil sump (oil pan)</p> <p>Component overview:</p>
--	--



GRUSB1118-21

- (1) Solenoid valve for oil pressure control
- (2) Oil pressure sensor



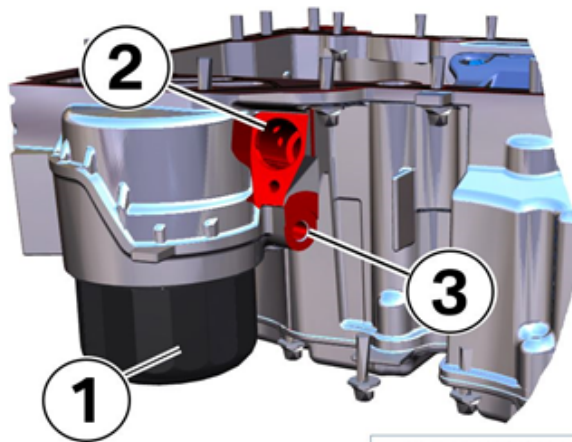
GRUSB1118-22

2. With the components removed, inspect the surfaces for metallic debris.

Inspect the solenoid valve screens (1).

Inspect the hole in the pressure sensor (2).

The screen on the solenoid valve and the pressure sensor bore should be clean; no debris is allowed to be present.



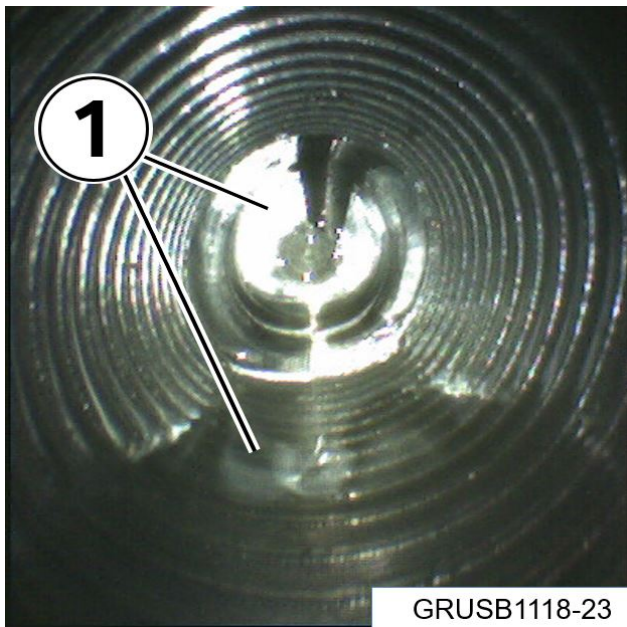
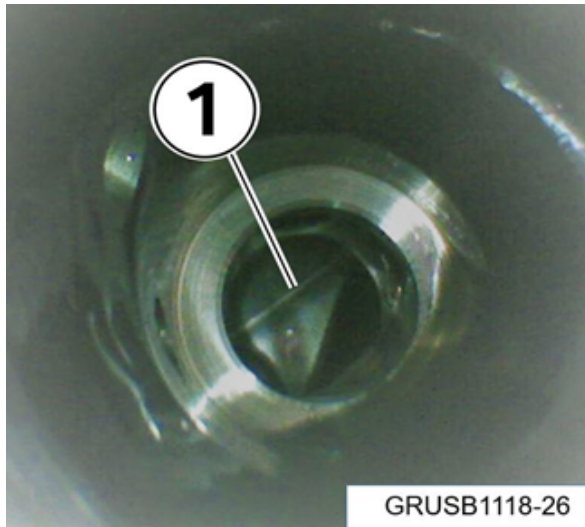
GRUSB1118-25

Inspection (location) overview:

- (1) Oil filter plastic cap
- (2) Solenoid valve for oil pressure control
- (3) Oil pressure sensor

3. Use a borescope to inspect the solenoid valve machined bore in the upper oil pan.

This bore should be clean without any debris present.



4. Use the borescope to inspect the oil pressure bore in the upper oil pan.

This threaded bore should be clean without any debris present.

If metallic debris is not found during the inspections (**pass**), inspect the removed solenoid valve O-ring.

- If not damaged, reinstall the solenoid valve as per the repair instructions
- If the O-ring is damaged then the entire solenoid will need to be replaced using the part number found in the parts table

Inspect the oil pressure sensor before reinstalling. If damage is observed, install a new sensor using the applicable part number that is found in the parts table.

Reassemble the vehicle as per the applicable repair instructions.

**If metallic debris is found during the inspections (fail), the engine must be replaced.**

**Engine authorization: Create an Engine TeileClearing PuMA case with pictures of the debris that was found and wait for a response.**

**If you need additional assistance to determine the proper diagnosis, create an Engine TeileClearing PuMA case with pictures and wait for a response.**

**Refer to the applicable repair instruction to perform the engine replacement.**

## PARTS INFORMATION

Monitor the Parts Matrix for ordering procedure.

Refer to the ETK and the applicable repair instructions for one-time use fasteners and/or component information regarding additional or replacement screws, gaskets, and seals that need to be installed and claimed.

Vehicles that **pass** the inspection:

Part Number	Description	Quantity
07 14 6 886 617	Multi-purpose bolt ASA (G05 only)	10
31 10 6 870 648	Hex bolt with washer (G12 and G30 only)	10
11 41 7 639 993	Solenoid valve for oil pressure control Only order if damage is found	1 (Only if required)
12 61 8 614 494	Oil pressure sensor Only order if damage is found	1 (Only if required)
OR (See note below)		
12 61 8 647 488	Oil pressure sensor - Only order if damage is found	1 (Only if required)

Note: Due to an ETK error you will need to determine which oil pressure sensor is installed and order the correct part number.



P/N 12 61 8 614 494

Silver and Black Sensor

M12 Thread

P/N [12 61 8 647 488](#)



GRUSB1119-08

Gold and Black Sensor

M10 Thread

Vehicles that **failed** the inspection and **are already** delivered to a customer:

Part Number	Description	Quantity
Refer to ETK using the vin number of the vehicle.	Remanufactured engine	1
07 14 6 886 617	Multi-purpose bolt ASA (G05 only)	10
31 10 6 870 648	Hex bolt with washer (G12 and G30 only)	10

Vehicles that failed the inspection and are **NOT** already delivered to the **first** customer (new in-stock):

Part Number	Description	Quantity
Refer to ETK using the vin number of the vehicle.	New engine	1
07 14 6 886 617	Multi-purpose bolt ASA (G05 only)	10
31 10 6 870 648	Hex bolt with washer (G12 and G30 only)	10

**WARRANTY INFORMATION**

Reimbursement for this Delivery Stop Action will be via normal claim entry utilizing the following information:

<b>Defect Code:</b>	<b>0011990400</b>	<b>G0x G1x G3x N63 Check oil sump for metallic debris</b>
---------------------	-------------------	---

Completion “before” vehicle delivery to the customer or the vehicle is already in the workshop:

Work Pkg	Labor Operation:	Labor Allowance:	Description (Plus work):

# 1	00 67 531	Refer to AIR (All)	Check oil sump for metallic debris (No repair is necessary) (Plus work) <b>(G05, G12 and G30)</b>
Or:			
# 2	00 67 532	Refer to AIR (Except the G05)	Check oil sump for metallic debris and replace the engine (Plus work) <b>(G12 and G30 only)</b>

Or:

**Completion after vehicle delivery to the customer (with no other Main work will be performed/claimed)**

Work Pkg	Labor Operation:	Labor Allowance:	Description (Main work):
# 3	00 67 019	Refer to AIR (All)	Check oil sump for swarf (metallic debris) (No repair is necessary) (Main work) <b>(G05, G12 and G30)</b>
Or:			
# 4	00 67 020	Refer to AIR (Except the G05)	Check oil sump for swarf (metallic debris) and replace the engine (Main work) <b>(G12 and G30 only)</b>

**Claim Repair Comments**

Unless additional related/in conjunction work was required (not addressed and/or included in one of the options provided above), then only reference the SIB number and the work package (Pkg) number performed in the RO technician notes and in the claim comments (For example: B11 16 18 WP 1, excluding WP 5).

Or, for the:

**G05 Only (New in-stock/vehicles already in the workshop and after first delivery vehicles)**

Work Pkg	Labor Operation:	Labor Allowance:	Description (Main or Plus work):
# 5	00 67 021	Up to 310 FRU* <b>(G05)</b>	Work time <b>(WT)</b> to check oil sump for swarf (metallic debris) and replace the engine <b>(G05 only)</b>

**\*Special work time labor operation code 00 67 021 punch times' must support the FRU amount claimed and include an explanation on the repair order and in the claim comments section.**

And:

**Sublet – Bulk Materials (RO and Claim Comments Required)**

<b>Sublet Code 4</b>	Up to \$50.00	Reimbursement for the repair-related bulk materials (Do not use part numbers for claim submission)
----------------------	---------------	--

Sublet reimbursement calculation for claiming the applicable repair-related bulk materials (BMW part numbers) is the dealer net price for the “quantities used” plus your center’s handling.

BMW Antifreeze/Coolant: Claim for the amount that is needed to replace what was drained with a “50/50 coolant/water solution.”

Enter this material cost in sublet and itemize the amount on the repair order and in claim comment section.

And, as applicable:

**Alternative Mobility Solution (AMS) for Vehicle Owners (RO and Claim Comments Required)**

This action repair qualifies for Alternative Mobility Solution (AMS) expense reimbursement, claim this item under the Defect Code noted above as follows:

- Sublet Code 2 - Itemize the AMS sublet amount on the repair order and in the claim comment section.

Please refer to [SI B01 29 16](#) for additional information.