



HYUNDAI

Technical Service Bulletin

| | |
|-----------------------|--------------------------|
| GROUP Body | NUMBER 19-BD-009H-1 |
| DATE December 2019 | MODEL(S) Sonata (LFa) |

SUBJECT: TRUNK LID TORSION BAR SERVICE GUIDE
AND WARRANTY EXTENSION (TXXF)

This TSB supersedes 19-BD-009H by including the warranty extension information and updating the parts information.

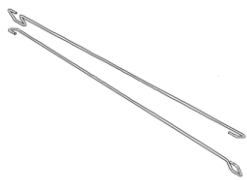
Description: On certain Sonata (LF) vehicles equipped with smart trunk, the trunk lid may not open to the desired height when using the smart trunk feature. Follow the procedure in the bulletin to inspect the trunk lid opening height and replace the torsion bars if required.

The warranty coverage for the trunk lid torsion bars has been extended to 78 months or 78,000 miles from the date of original retail delivery or date of first use, whichever occurs first, and is valid for original and subsequent owners.



Applicable Vehicles: 2015 ~ 2017 model year Sonata (LFa) equipped with Smart Trunk Feature

Parts Information:

| PART NAME | PART NUMBER | COLOR LABEL | COMMENT | IMAGE |
|--|-------------|-------------|--------------------------------------|---|
| BAR-TRUNK LID HINGE TORSION LH (Non-LED) | 79273-C1010 | White | For vehicles with non-LED tail lamps |  |
| BAR-TRUNK LID HINGE TORSION RH (Non-LED) | 79283-C1010 | Yellow | | |
| BAR-TRUNK LID HINGE TORSION LH (LED) | 79273-C2000 | Green | For vehicles with LED tail lamps | |
| BAR-TRUNK LID HINGE TORSION RH (LED) | 79283-C2000 | Pink | | |

Warranty Information:

| MODEL | OP CODE | OPERATION | OP TIME | CAUSAL PART | NATURE CODE | CAUSE CODE |
|--------------|----------|-----------------------------|---------|-------------|-------------|------------|
| Sonata (LFa) | 79273R00 | BAR-TRUNK LID HINGE TORSION | 0.3 M/H | 79273-C1010 | I14 | ZZ3 |
| | | | | 79283-C1010 | | |
| | | | | 79273-C2000 | | |
| | | | | 79283-C2000 | | |

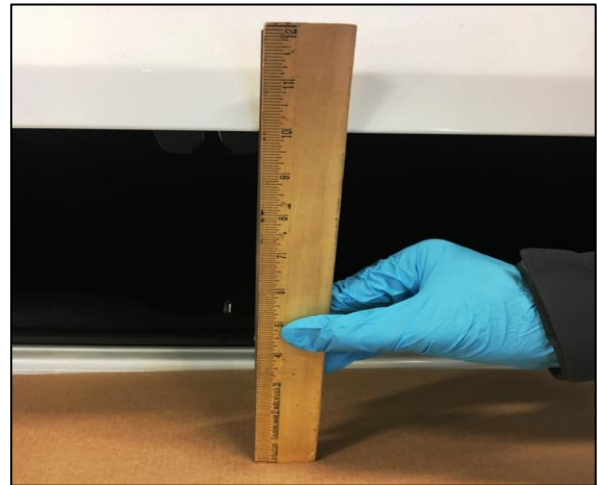
Circulate To: General Manager, Service Manager, Parts Manager, Warranty Manager, Service Advisors, Technicians, Body Shop Manager, Fleet Repair

Inspection Procedure:

1. Using the key fob, perform an open and close cycle of the trunk lid ten times.



2. Open the trunk lid and measure the trunk opening height using a ruler or measuring tape. The measurement should be taken from the center of the bumper to the bottom of the trunk lid.



NOTICE

To assist in taking an accurate measurement, place a thin piece of cardboard on the bumper to accurately measure the opening height, vertically along the trunk lid opening axis.

3. If the trunk lid opens more than 7.5 inches (190.5 mm), no further action is required. The trunk is functioning properly. The inspection procedure is complete and submit for applicable labor.

If the trunk lid does not open more than 7.5 inches (190.5 mm), proceed to step 4 to replace the torsion bars.

! WARNING

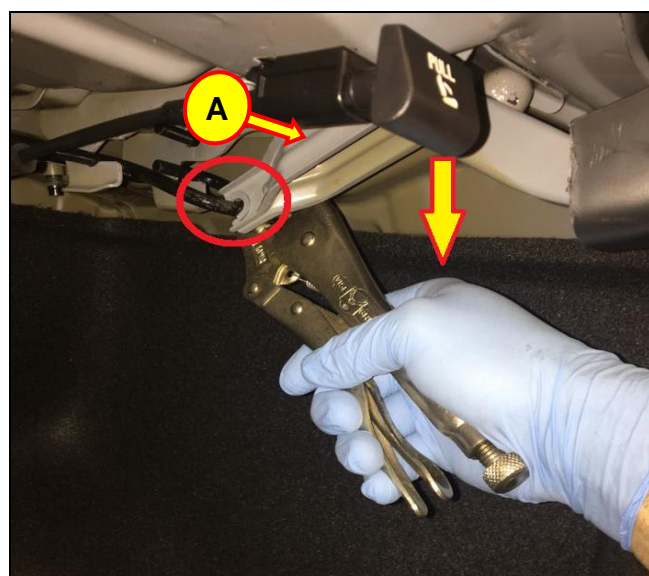
There is an increase in tension while holding the vice grips after disconnecting the hinge from the torsion bar. If caution is not taken there may be a risk of injury.

4. After opening the trunk, use a vice grip to push down on the outer side of the torsion bar away from the hinge (A).

Ensure the vice grip holds on to the outer edge of the torsion bar, outer side of the hinge (B).



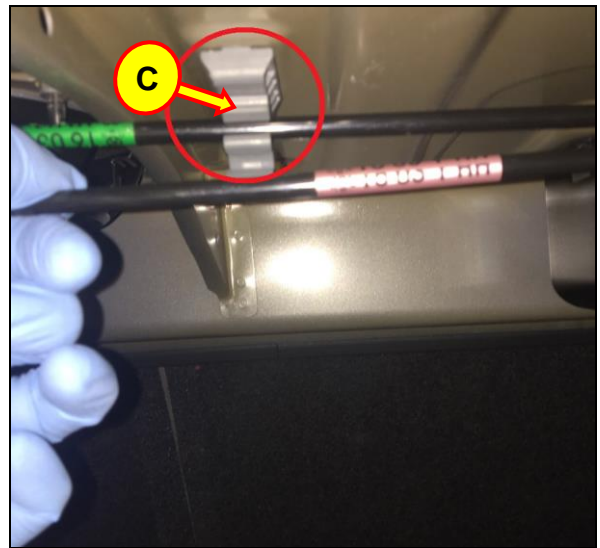
5. Pull the vice grips downward to release the hinge (A) from the torsion bar and push the hinge toward the outside of the trunk.



6. After releasing the hinge (A) from the torsion bar, slowly lift the torsion bar held by the vice grip and release the vice grip.



7. Disconnect the released torsion bar from the center clip (C).



8. Remove the loose torsion bar from the mounting point on the opposite side and then remove from the vehicle.



⚠ WARNING



After removing the first torsion bar, place a prop rod that is approximately 5 feet long to hold the trunk lid open while performing the procedure.

9. Perform the same removal process to the other torsion bar mentioned above to the opposite side.

10. Install the new torsion bars in reverse order of the removal.

NOTICE

- The white/green labeled torsion bar is installed to the top of the clip.
- The yellow/pink labeled torsion bar is installed to the bottom of the clip.

| Vehicles with LED tail lamps | Vehicles with non-LED tail lamps |
|---|--|
|  <p>Green labeled torsion bar on top (P/N: 79273-C2000) Pink labeled torsion bar on bottom (P/N: 79283-C2000)</p> |  <p>White labeled torsion bar on top (P/N: 79273-C1010) Yellow labeled torsion bar on bottom (P/N: 79283-C1010)</p> |

11. Check for proper operation of the trunk by performing an open and close cycle five times using the key fob. Perform the same measurements in step 2 and 3 to confirm that the proper specification is met.

12. The service procedure is now complete.