



Technical Journal

TITLE:

Doorhandles exterior, not fully return

REF NO: TJ 25129.3.0	ISSUING DEPARTMENT: Technical Service	CAR MARKET: United States and Canada	
PARTNER: 3 US 7510 Volvo Car USA		ISSUE DATE: 2019-12-19	STATUS DATE: 2019-12-30
FUNC GROUP: 8340	FUNC DESC: Lock, handle	Page 1 of 4	

“Right first time in Time”

Attachment

File Name	File Size
TJI-432358-2_1_1_en-US.pdf	0.5773 MB

Vehicle Type

Type	Eng	Eng Desc	Sales	Body	Gear	Steer	Model Year	Plant	Chassis range	Struc Week Range
134							2011-2013		0000194-0217813	201020-201305

CSC Customer Symptom Codes

Code	Description
VK	Doors/Exterior door handle problems
VY	Doors/Manual locking/unlocking does not work

VST Operation Number

VST Operation Number	Description
98354-2	Handle outer side doors adjust acc. to TJ25129
98515-2	Cover caps exterior handle replacement acc. to TJ25129

DTC Diagnostic Trouble Codes

Rows beginning with * are modified

Note! If using a printed copy of this Technical Journal, first check for the latest online version.



Text

*New title

DESCRIPTION:

When using outer doorhandle the handle may not fully return to it's original position.

PRODUCT MODIFICATION:

*New cover implemented in production 2013w05.

MATERIAL RETURN:

Material for analysis can be requested in Vehicle Report. In other cases, follow normal routines

VEHICLE REPORT:

Yes, please submit a Vehicle Report if the service solution described in this TJ has no effect. Use concern area "Vehicle Report" and sub concern area "Support Not Needed", use function group 8340.

SERVICE:

In case of customer complaints, perform adjustment according to attachment.

VSTG OPERATION NUMBER:

*98515-2 Cover caps exterior handle replacment acc. to TJ25129

98354-2 Handle outer side doors adjust acc. to TJ25129

To view TJ attachment continue to next page. This TJ has one attachment.

Volvo Car Customer Service	
	TJ Instruction
	TJ No.25129
	Date January 2013 Issue 01
Title	Adjustment to door handles.

Materials	Quantity	Part No.
Grease	1.0	1161761

1.

Note! Some variation in the illustrations may occur, but the essential information is always correct

Removal

Note! Removal steps in this procedure may contain installation details.

Applies to both sides.

Disconnect handle outer side door front right, refer to:

Removal, replacement and Installation.

8- Body and interior

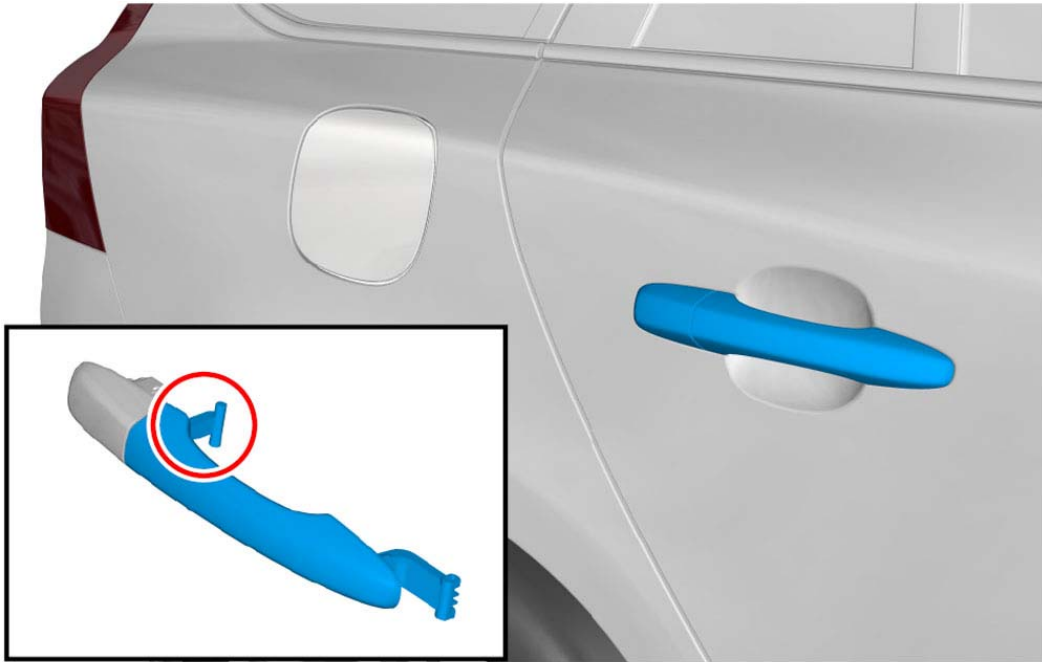
83- Doors and lids

834 – lock, handle

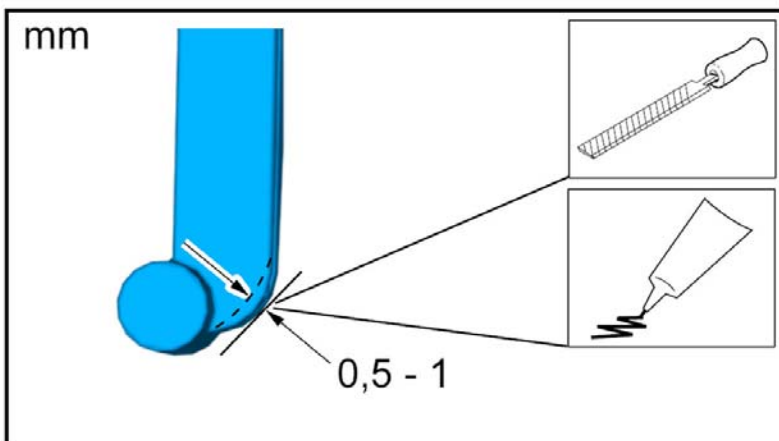
Repeat for all doors as needed.

VOLVO

Adjustment



Use: Grease, 1161761



To install, reverse the removal procedure.