

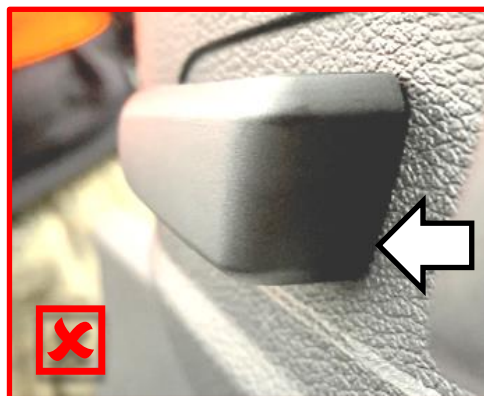
	GROUP Body	MODEL 2020MY Telluride (ON)
	NUMBER PS641	DATE December 2019
 		
SUBJECT: TELLURIDE SEAT SWITCH STICKING		

This bulletin provides information regarding the front driver and/or passenger seat adjusting switch sticking on some 2020MY Telluride (ON) vehicles. A sticking seat switch may be caused by insufficient clearance between the seat switch and side seat shield cover, and/or a broken/damaged cover. In some cases, removal and re-installation of the side seat shield cover or replacement may be required to address the concern. Refer to EPC for part and LTS for labor operation if needed.



Sufficient Clearance



Insufficient Clearance