



SIB 31 07 19

2019-11-05

## SERVICE ACTION: APPLY CAVITY PROTECTION INSIDE THE FRONT AXLE SUPPORT

Please perform the procedure outlined in this Service Information on all affected vehicles before customer delivery. In the event the customer has already taken delivery of the vehicle, please perform the procedure the next time the vehicle is in the shop.

## SERVICE ACTION: APPLY CAVITY PROTECTION INSIDE THE FRONT AXLE SUPPORT

### MODEL

G20 (3 Series Sedan)
----------------------

### AFFECTED VEHICLES

Vehicles which require this Service Action to be completed will show it as "Open" when checked either in AIR, the "Service Menu" of DCSnet (Dealer Communication System) or with the Key Reader.

### SITUATION

The corrosion protection applied to the inside of the front axle support during the manufacturing process may have minor coating defects. In individual cases, this can lead to localized rust damage on the front axle support over the service life of the vehicle.

### CAUSE

Manufacturing process error.

### CORRECTION

Apply cavity protection P/N 83 42 2 457 337 into the designated areas of the front axle support.

**Note:** One can of cavity spray wax is sufficient to cover the application in two vehicles.

### PROCEDURE

For rear wheel drive (RWD) vehicles refer to attachment 1: Apply cavity protection, RWD

For all wheel drive (AWD) vehicles refer to attachment 2: Apply cavity protection, AWD

### PARTS INFORMATION

Part Number	Description	Quantity
83 42 2 457 337	Cavity Protection (400 ml)	1

### WARRANTY INFORMATION

Reimbursement for this Service Action will be via normal claim entry utilizing the following information:

<b>Defect Code:</b>	<b>0031970100</b>
---------------------	-------------------

**Completion before the first vehicle delivery to a customer or the vehicle is already in the workshop.**

Work Pkg	Labor Operation	Description (Plus work)	Labor Allowance
# 1	00 68 536	Preserving the front axle support	3 FRU (G20 3 Series xDrive); 4 FRU (G20 3 Series)

Or:

**The vehicle arrives at your center and this Service Action shows open (No other Main work will be performed/claimed during this workshop visit)**

Work Pkg	Labor Operation	Description (Main work)	Labor Allowance
# 2	00 68 029	Preserving the front axle support	5 FRU (G20 3 Series xDrive); 6 FRU (G20 3 Series)

### Claim Repair Comments

Only reference the SIB number and the work package (Pkg) number performed in the RO technician notes and in the claim comments (For example: B31 07 19 WP 1), unless otherwise required by State law.

And, as needed:

### Sublet – Bulk Material (RO and Claim Comments Required)

<b>Sublet Code 4</b>	Up to \$10.00	Reimbursement for the repair-related bulk materials (Do not use the BMW part number for claim submission)
----------------------	---------------	---

Sublet reimbursement calculation for claiming the applicable repair-related bulk material (BMW part number) is at the dealer net price amount for the quantity used plus your center's handling.

Enter this material cost in sublet and itemize the amount on the repair order and in claim comment section.  
Supporting Materials

[picture\\_as\\_pdf B31 07 19 Attachment 2 Apply Cavity Protection AWD.pdf](#)

[picture\\_as\\_pdf B31 07 19 Attachment 1 Apply Cavity Protection RWD.pdf](#)

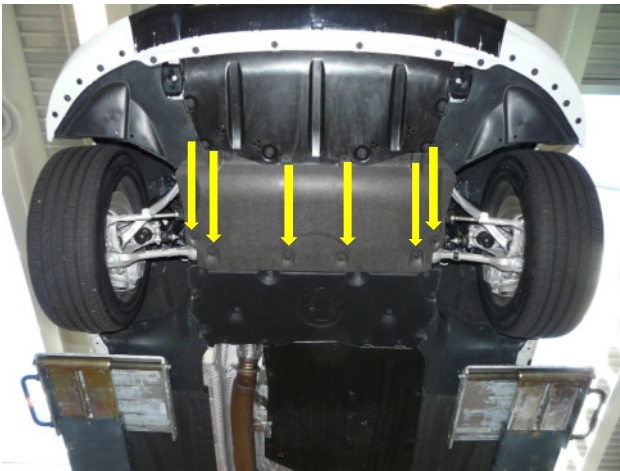
## Service Action: Apply cavity protection inside the front axle support, RWD

### Procedure

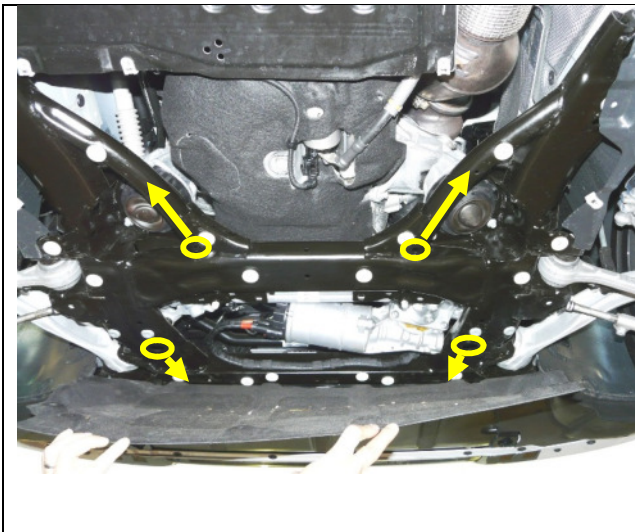
For rear wheel drive (RWD) vehicles- proceed to the next step.  
For **all-wheel drive** vehicles- refer to Attachment 2 "Apply cavity protection, AWD"

#### RWD:

- Remove the center underbody protection as per REP 51 47 492



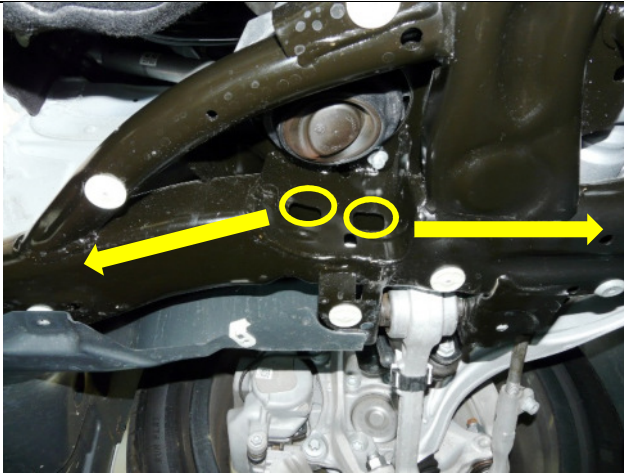
- Release the six fastening screws (yellow arrows) to expose the front area of the axle support



- Blow out the front axle support at the openings (circled) with compressed air **\*\*Wear safety glasses\*\***
- Full insert the cavity wax\* tube in the access holes (circled) and spray in the direction of the arrows. Slowly pull back the can while applying the cavity wax until the tube is about to exit the hole to ensure the entire area is protected.

**Note-** the access hole opening must also be coated. Wipe off any excess wax which runs out of holes or other joints.

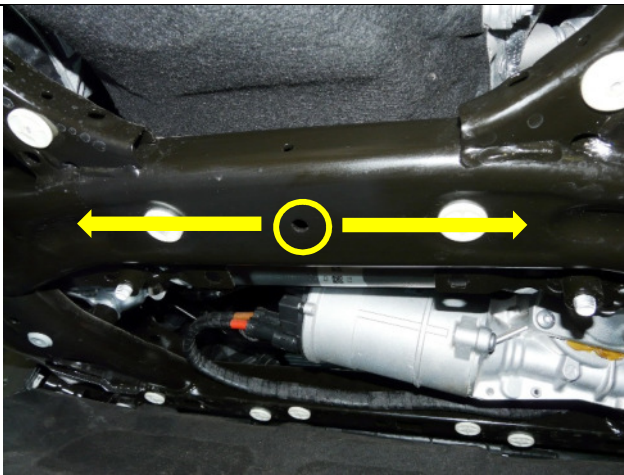
\* Cavity wax P/N 83 42 2 457 337



- Blow out the front axle support at the openings (circled) with compressed air  
\*\*Wear safety glasses\*\*
- Fully insert the cavity wax tube in the access holes (circled; left side shown) and spray in the direction of the arrows. Slowly pull back the can while applying the wax until the tube is about to exit the hole to ensure the entire are is protected.

**Note-** the access hole openings must also be coated. Wipe away any excess wax which runs out of the holes or other joints.

- Repeat the procedure on the other side of the front axle support



- Blow out the front axle support at the opening (circled) with compressed air  
\*\*Wear safety glasses\*\*
- Fully insert the cavity wax nozzle in the access holes (circled) at the center of the front axle support and spray outwards in the direction of the arrows. Slowly pull back the can while applying the wax until the tube is about to exit the hole to ensure the entire are is protected.

**Note-** the access hole openings must also be coated. Wipe away and excess wax which runs out of the holes or other joints.

- Reassemble

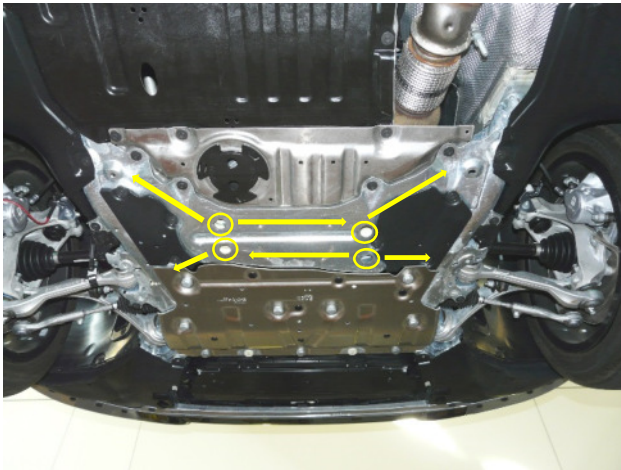
## Service Action: Apply cavity protection inside the front axle support, AWD

### Procedure

For all wheel drive (AWD) vehicles- proceed to the next step.

For **rear-wheel drive** vehicles- refer to Attachment 1 “Apply cavity protection, RWD”

AWD:



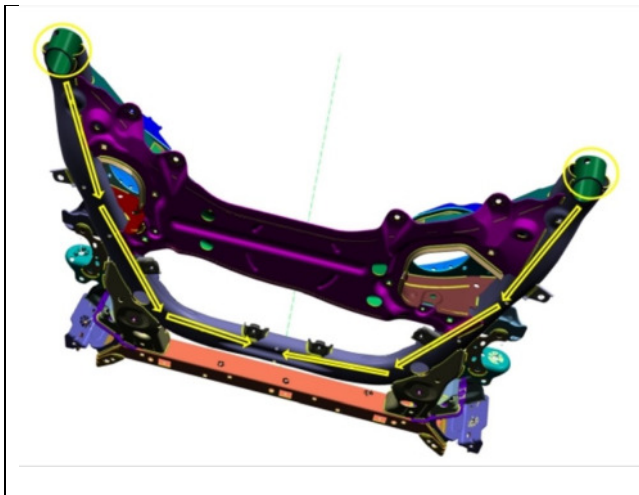
- Blow out the front axle support at the openings (circled) with compressed air.

**\*\*Wear safety glasses\*\***

- Fully insert the cavity wax\* tube in the access holes circled and spray in the direction of the arrows. Slowly pull back the can while applying the cavity wax until the tube is about to exit the hole to ensure the entire area is protected.

**Note-** the access hole opening must also be coated. Wipe off any excess wax which runs out of the holes or other joints.

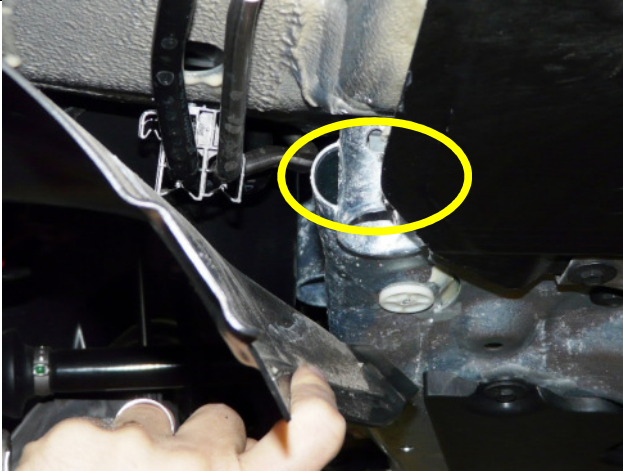
\*Cavity wax P/N 83 42 2 457 337



**Note-** The cavity wax will need to reach the front area of the axle support as indicated by the yellow arrows (viewed looking up from beneath vehicle).

The following 3 photos will indicate the access points for applying the cavity wax. All cleaning and application should be applied in the direction as indicated by the arrows shown here.





- Release the two screws from the bottom of the left front wheel well cover (view looking forwards) to expose the left rear opening of the front axle support

**Note-** The right front wheel well cover does not need be released as the axle support is exposed at the right rear

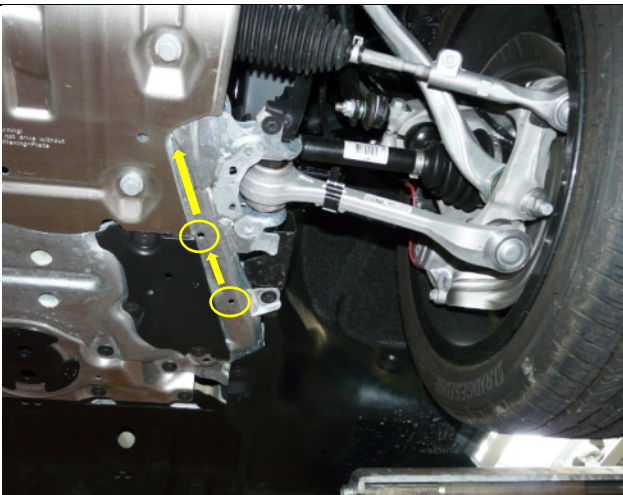
- Blow out the front axle support at the opening (circled) with compressed air. Be sure to blow out the inside and outside of the opening. Repeat on right side

Wear safety glasses

- Fully insert the cavity wax tube in the access holes (circled in photo above) and spray in the direction to the front of the vehicle. Be sure to apply the cavity wax to the inside hole also. Slowly pull back the can while applying the cavity wax until the tube is about to exit the hole to ensure the entire area is protected. Repeat the procedure to the right side as well.

**Note-** the access hole opening must also be coated. Wipe off any excess wax which runs out of the holes or other joints.

- Reinstall screws for wheel well cover

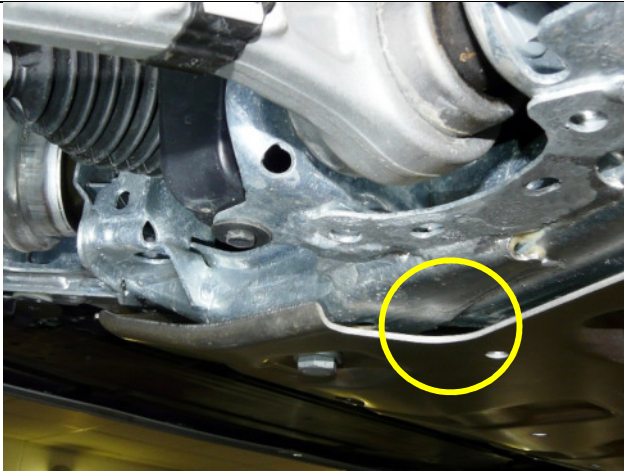


- Blow out the front axle support at the openings (circled, rear first) with compressed air. Repeat on right side.

**\*\*Wear safety glasses\*\***

- Insert the cavity wax tube in the access holes circled and spray in the direction of the arrows. Slowly pull back the can while applying the cavity wax until the tube is about to exit the hole to ensure the entire area is protected.

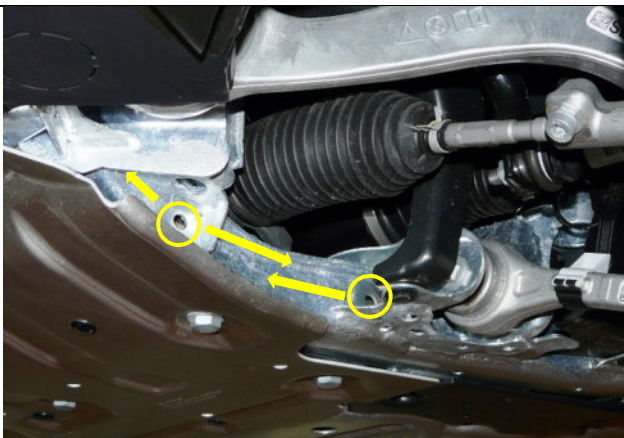
**Note-** the access hole opening must also be coated. Wipe off any excess wax which runs out of the holes or other joints.



- Blow out the front axle support at the opening (circled) with compressed air. Repeat on right side

**\*\*Wear safety glasses\*\***

- Fully insert the cavity wax tube in the access holes circled and spray in the direction to the center of the vehicle. Slowly pull back the can while applying the cavity wax until the tube is about to exit the hole to ensure the entire area is protected.



- Blow out the front axle support at the opening (circled) with compressed air. Repeat on right side

**\*\*Wear safety glasses\*\***

- Insert the cavity wax tube in the access holes circled and spray in the direction of the arrows. Slowly pull back the can while applying the cavity wax until the tube is about to exit the hole to ensure the entire area is protected. Repeat on right side

**Note-** the access hole opening must also be coated. Wipe off any excess wax which runs out of the holes or other joints.



- Blow out the front axle support at the opening (circled) with compressed air.

**\*\*Wear safety glasses\*\***

- Insert the cavity wax tube in the access hole circled and spray in the direction to the rear of the vehicle. Slowly pull back the can while applying the cavity wax until the tube is about to exit the hole to ensure the entire area is protected.

**Note-** the access hole opening must also be coated. Wipe off any excess wax which runs out of the holes or other joints.