



Service Bulletin

Bulletin No.: 19-NA-227

Date: November, 2019

TECHNICAL

Subject: Service Stabilitrak Message Displayed with Stability Control Disabled

Brand:	Model:	Model Year:		VIN:		Engine:	Transmission:
		from	to	from	to		
Buick	Envision	2019	2019			All	All

Involved Region or Country	North America, N.A. Export Regions
Additional Options (RPOs)	
Condition	<p>Some customers may comment on a "Service Stabilitrak" displayed on the Driver Information Center (DIC)</p> <p>The Electronic Stability Control (ESC) may be disabled during the ignition cycle when the message is displayed but function may return to work properly after vehicle sleep cycle.</p> <p>A technician may find one or both DTCs set current or in history:</p> <ul style="list-style-type: none"> • DTC U0125: Lost Communication With Multi-axis Acceleration Sensor Module • DTC U0151: Lost Communication with SDM
Correction	Dealers are to reprogram the Electronic Brake Control Module (EBCM).

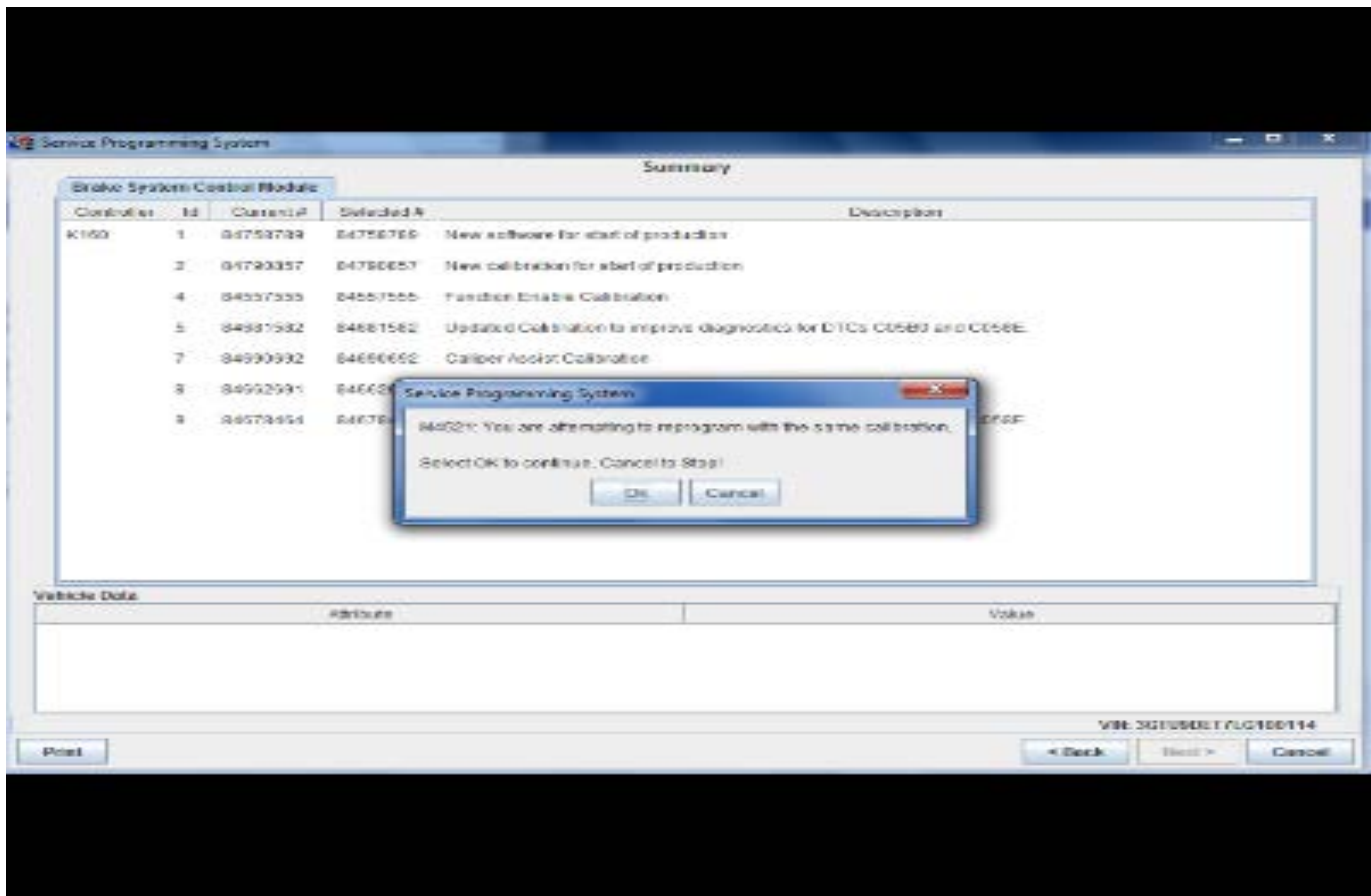
Service Procedure

Caution: Before downloading the update files, be sure the computer is connected to the internet through a network cable (hardwired). DO NOT DOWNLOAD or install the files wirelessly. If there is an interruption during programming, programming failure or control module damage may occur.

Note: Carefully read and follow the instructions below.

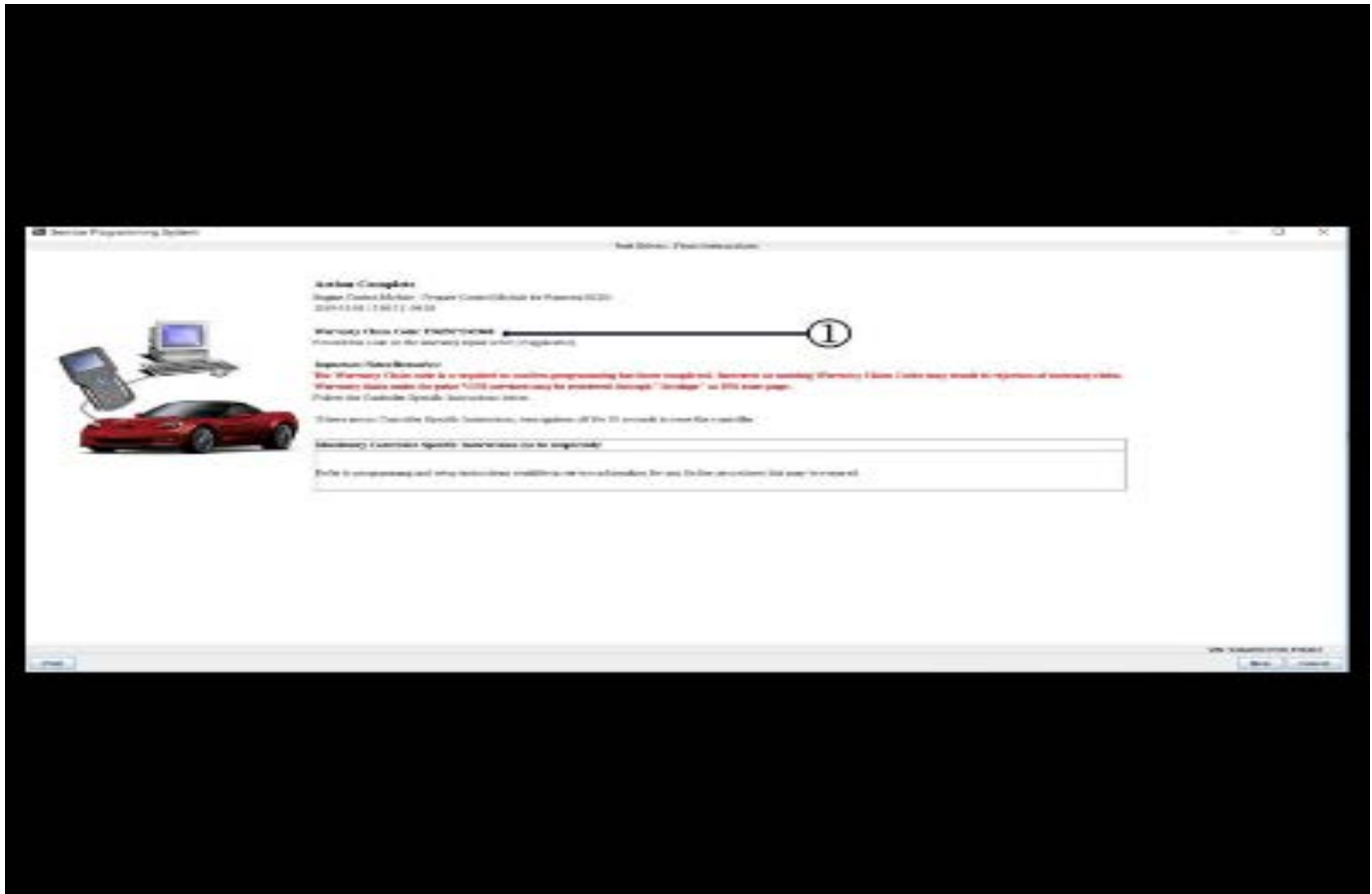
- Ensure the programming tool is equipped with the latest software and is securely connected to the data link connector. If there is an interruption during programming, programming failure or control module damage may occur.

- Stable battery voltage is critical during programming. Any fluctuation, spiking, over voltage or loss of voltage will interrupt programming. Install a GM Authorized Programming Support Tool to maintain system voltage. Refer to www.gmdesolutions.com for further information. If not available, connect a fully charged 12 V jumper or booster pack disconnected from the AC voltage supply. DO NOT connect a battery charger.
- Turn OFF or disable systems that may put a load on the vehicles battery such as; interior lights, exterior lights (including daytime running lights), HVAC, radio, etc.
- Clear DTCs after programming is complete. Clearing powertrain DTCs will set the Inspection/Maintenance (I/M) system status indicators to NO.



Note: If the Same Calibration/Software Warning is noted on the SPS screen, select OK and follow screen instructions. After a successful programming event, the WCC is located in the Service Programming System dialogue box of the SPS Summary screen. No further action is required. Refer to the Warranty section of the bulletin.

1. Reprogram the Electronic Brake Control Module. Refer to *K17 Electronic Brake Control Module: Programming and Setup* in SI.



5164843

- Record SPS Warranty Claim Code on job card for warranty transaction submission.

Parts Information

No parts are required for this repair.

Warranty Information

For vehicles repaired under warranty, use:

Labor Operation	Description	Labor Time
*2810035	Electronic Brake Control Module Reprogramming with SPS	Use Published Labor Operation Time

*To avoid warranty transaction rejections, carefully read and follow the instructions below:

- The SPS Warranty Claim Code must be accurately entered in the "SPS Warranty Claim Code" field of the transaction.
- When more than one Warranty Claim Code is generated for a programming event, it is required to document all Warranty Claim Codes in the "Correction" field on the job card. Dealers must also enter one of the codes in the "SPS Warranty Claim Code" field of the transaction, otherwise the transaction will reject. It is best practice to enter the FINAL code provided by SPS.

Warranty Claim Code Information Retrieval

If the SPS Warranty Claim Code was not recorded on the Job Card, the code can be retrieved in the SPS system as follows:

- Open TIS on the computer used to program the vehicle.
- Select and start SPS.

- Select Settings.

- Select the Warranty Claim Code tab.

The VIN, Warranty Claim Code and Date/Time will be listed on a roster of recent programming events. If the code is retrievable, dealers should resubmit the transaction making sure to include the code in the SPS Warranty Claim Code field.

Version	1
Modified	Released November 22, 2019

GM bulletins are intended for use by professional technicians, NOT a "do-it-yourselfer". They are written to inform these technicians of conditions that may occur on some vehicles, or to provide information that could assist in the proper service of a vehicle. Properly trained technicians have the equipment, tools, safety instructions, and know-how to do a job properly and safely. If a condition is described, **DO NOT** assume that the bulletin applies to your vehicle, or that your vehicle will have that condition. See your GM dealer for information on whether your vehicle may benefit from the information.



WE SUPPORT VOLUNTARY
TECHNICIAN
CERTIFICATION