



Preliminary Information

PIC6376 A/C Evaporator TXV Tubes Bent

Models

Brand:	Model:	Model Years:	VIN:		Engine:	Transmissions:
			from	to		
Chevrolet	Impala	2016 - 2020	All	All	All	All

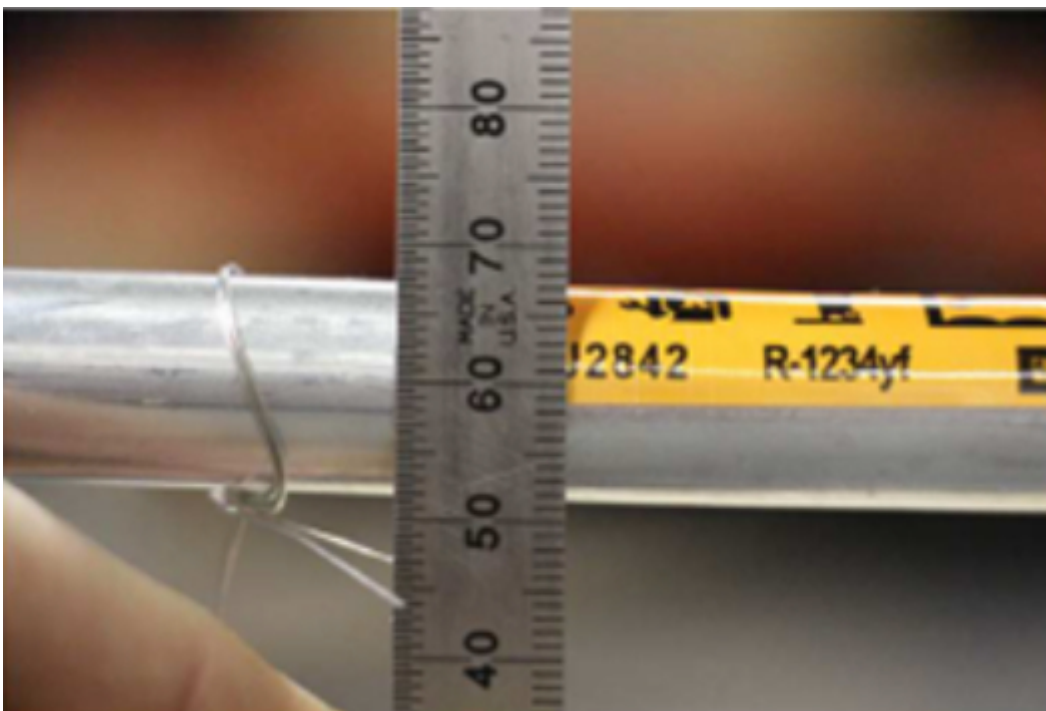
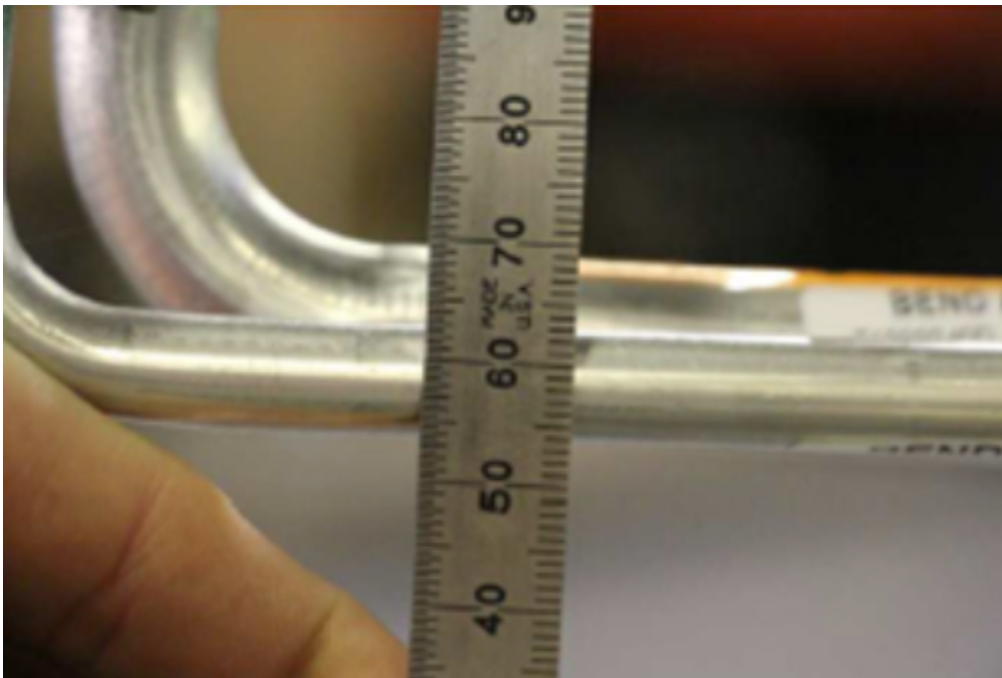
Involved Region or Country	North America
Condition	When replacing an evaporator a technician may notice when removing it from the box that the tubes appear to be bent downward. It may also be found that when attempting to install the evaporator in the HVAC case that the tubes will not align with the holes in the case or the evaporator will not fully fit into the case.
Cause	Current packaging procedures from the supplier may allow the evaporator tubes to be bent during shipping.

Correction:

Inspect the new evaporator to see if the TXV tubes are bent at a downward angle as shown below.



There should be a distance of 60 mm. when measuring from the core to the center of the TXV tubes as shown below.



If the TXV tubes on the new evaporator are bent down order a new evaporator and return the damaged part as "new defective". Do not attempt to adjust the tubes to allow installation of the evaporator in the HVAC case. If the tubes are bent or adjusted back into position this will result in a slow leak from the lock ring joint.

Parts Information

Part Number	Description	Quantity
84409864	Evaporator Kit - A/C R1234YF	1
84409866	Evaporator Kit - A/C R134A	1

Warranty Information

For vehicles repaired under the Bumper-to-Bumper coverage (Canada Base Warranty coverage), use the following labor operation. Reference the Applicable Warranties section of Investigate Vehicle History (IVH) for coverage information.

Labor Operation	Description	Labor Time
4416510	Air Conditioning Evaporator Core Replacement	Use Published Labor Operation Time

Additional SI Keywords

assist, auto, automatic, brake, braking, emergency, stop, unwanted

Version History

Version	1
Modified	11/27/2019 - Created on



© 2019 General Motors. All Rights Reserved.