	GROUP BOD	MODEL 2020MY Sorento (UMa)
	NUMBER 198	DATE November 2019
TECHNICAL SERVICE BULLETIN		
SUBJECT: SERVICE ACTION: DRIVER DOOR CHECKER ROD INSPECTION AND REPLACEMENT (SA407)		

This bulletin provides the procedure to inspect and if necessary replace the front left driver door checker rod assembly on some 2020MY Sorento (UMa) vehicles produced from September 23, 2019 through September 30, 2019, which may have an incorrect checker rod assembly installed during production. When operating the driver door, it may be very hard to open and/or close due to increase resistance from the door checker rod assembly. Before conducting the procedure, verify that the vehicle is included in the list of affected VINs.



*** NOTICE**

A Service Action is a repair program without customer notification that is performed during the warranty period. Any dealer requesting to perform this repair outside the warranty period will require DPSM approval.

Repair status for a VIN is provided on WebDCS (Service → Warranty Coverage → Warranty Coverage Inquiry → Campaign Information). Not completed Recall / Service Action reports are available on WebDCS (Consumer Affairs → Not Completed Recall → Recall VIN → Select Report), which includes a list of affected vehicles.

This issue number is SA407.

File Under: <Body>

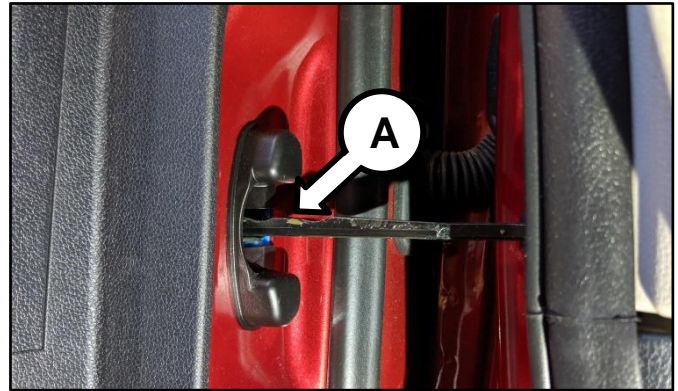
-
- Circulate To: General Manager Service Manager Parts Manager
 Service Advisors Technicians Body Shop Manager Fleet Repair

SUBJECT:

SERVICE ACTION: DRIVER DOOR CHECKER ROD INSPECTION AND REPLACEMENT (SA407)

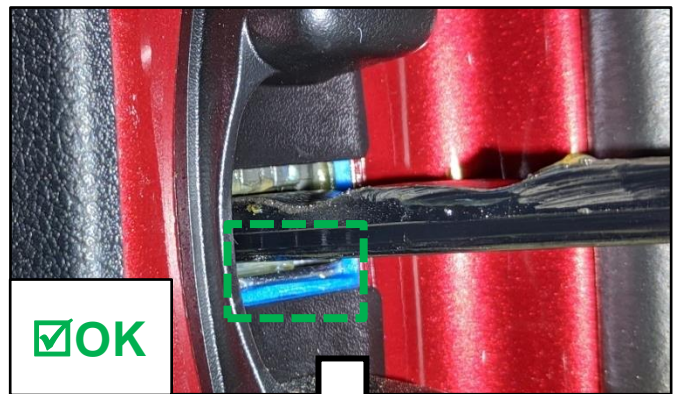
Inspection Procedure:

1. Open the left front door and locate the driver door checker assembly (A).

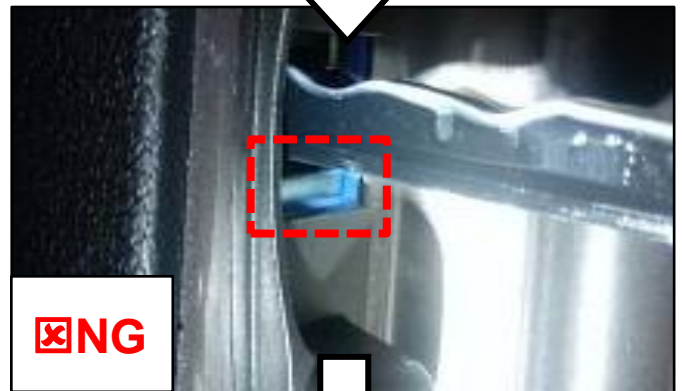


- 2a. Be sure that the door is fully open and using a flashlight, inspect the color inside of the door checker assembly. Note: The area behind the blue foam gasket.

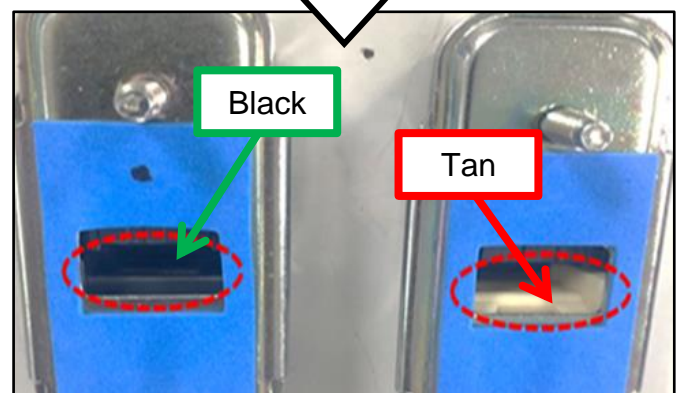
If the inside of the door checker color is black (OK), no further action is needed. This service action is now complete.



- 2b. If the inside of the door checker color is tan (NG) and not black, proceed to replace the driver door checker rod assembly with the correct part outlined on page 3.



- 2c. Door checker(s) removed for reference.

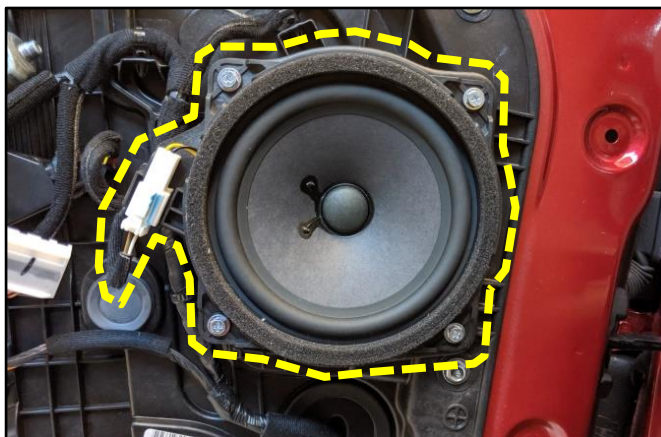


SUBJECT:

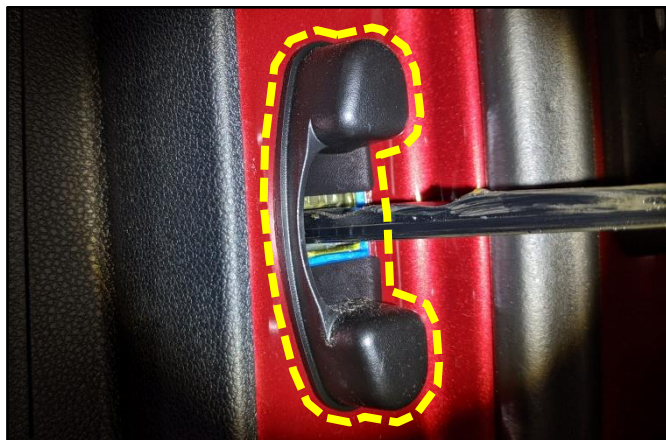
SERVICE ACTION: DRIVER DOOR CHECKER ROD INSPECTION AND REPLACEMENT (SA407)

Replacement Procedure:

1. Remove the left front door speaker by referring to the "Body Electrical System → AVN System → Speaker → Repair procedures" chapter in the applicable Shop Manual on KGIS.



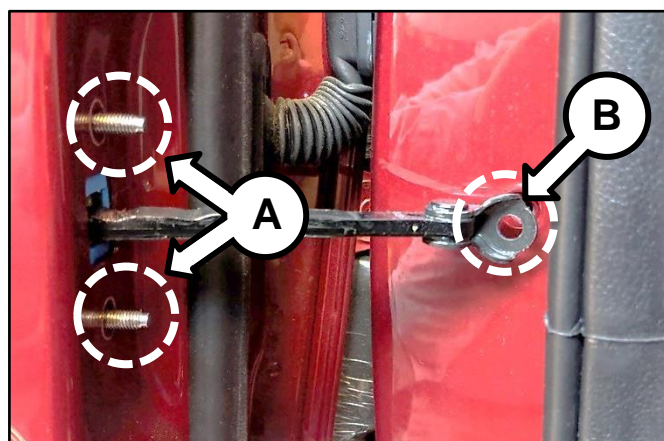
2. Remove the door checker cover.



3. Remove the two (2) door checker retaining nuts (A) and rod retaining bolt (B).

Torque Specifications for nut (A):
6.51 – 8.68 lb.ft. (0.9 – 1.2 kgf.m,
8.83 – 11.77 N.m)

Torque Specifications for bolt (B):
14.5 - 21.7 lb.ft. (2.0 – 3.0 kgf.m,
19.6 - 29.4 N.m)



SUBJECT:

SERVICE ACTION: DRIVER DOOR CHECKER ROD
INSPECTION AND REPLACEMENT (SA407)

4. Pull the door checker out by way of the open speaker hole and install the correct part supplied.



Torque Specifications for nut (A):
6.51 – 8.68 lb.ft. (0.9 – 1.2 kgf.m,
8.83 – 11.77 N.m)

Torque Specifications for bolt (B):
14.5 - 21.7 lb.ft. (2.0 – 3.0 kgf.m,
19.6 - 29.4 N.m)



5. Install the left front door speaker in the reverse order of removal. Ensure to tighten the speaker retaining bolts and fully seat the connector.



6. Install all other removed parts in the reverse order of removal.


SUBJECT:

SERVICE ACTION: DRIVER DOOR CHECKER ROD INSPECTION AND REPLACEMENT (SA407)

AFFECTED VEHICLE RANGE:

Model	Production Date Range
Sorento (UMa)	September 23, 2019 through September 30, 2019

REQUIRED PART:

Part Name	Part Number	Figure
Door Checker Assembly	79380 C6000	

WARRANTY INFORMATION:

N Code: N99 C Code: C99

Claim Type	Causal P/N	Qty.	Repair Description	Labor Op Code	Op Time	Replacement P/N	Qty.
V	76003 C6000	0	(SA407) Driver Door Checker Rod Inspection	190A33I0	0.2 M/H	N/A	0
		1	(SA407) Driver Door Checker Rod Inspection and Replacement	190A33R0	0.5 M/H	79380 C6000	1

*** NOTICE**

VIN inquiry data for this repair is provided for tracking purposes only. Kia retailers should reference SA407 when accessing the WebDCS system.