

Title: Debris Inspection and Deflector Install

Applicability: MY18 & MY19 Revero

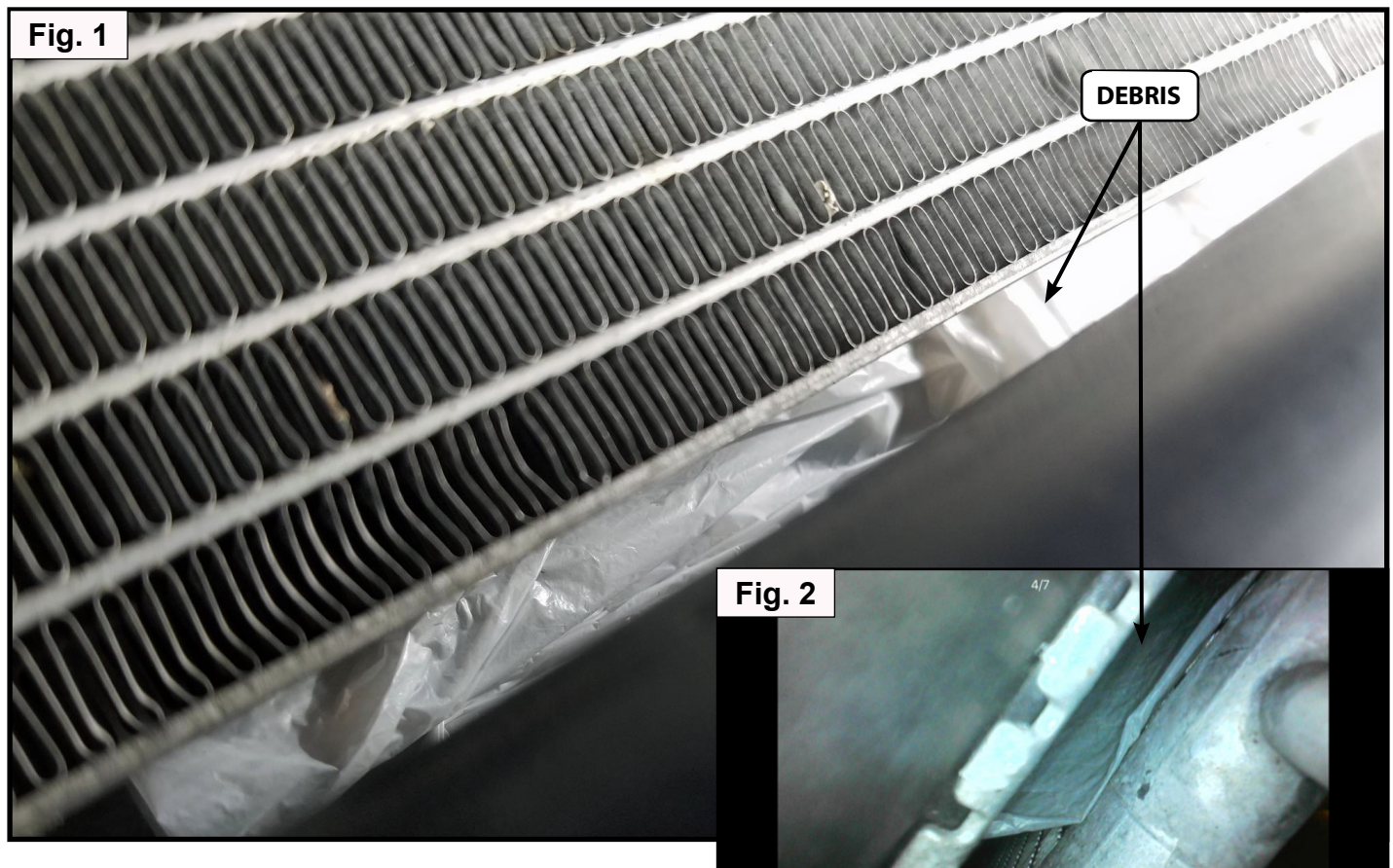
Market Region: All

PRIORITY: On Complaint

PURPOSE: To inspect for possible road debris lodged between the condenser and radiator, and install a deflector as a preventive remedy for future debris.

This document provides a procedure to inspect for road debris that may have become lodged between the condenser and the radiator, and could cause the vehicle to overheat. When diagnosing an overheating concern, first, place the vehicle on the lift. Then, carefully inspect the the area below the condenser (Fig.1) for the presence of debris. In addition, use a bore-scope to inspect the space between the condenser and the radiator (Fig. 2) for possible migration of debris into this area. If no debris is found, continue diagnostics and inspections to repair as required.

Proceed with the bulletin to install the debris deflector.



Karma Automotive Bulletins and service documents are intended for use by experienced and trained Technicians. If you lack the skills, tools, equipment and a suitable workshop for any procedure described in this document, we suggest you leave such repairs to a Karma retailer and service provider. See your service provider for advice on whether your vehicle may benefit from the information contained within this document. The information contained in the Karma Bulletin is accurate at the date of publication. However, Karma Automotive regularly updates technical information. Please check with your Karma Automotive Retailer and Karma Automotive service provider that the bulletin you intend to use contains the latest available information.

Title: Debris Inspection and Deflector Install

Applicability: MY18 & MY19 Revero

Market Region: All

Install will require a Kit (P/N C161132900100) with two (2) debris deflectors (C161132900300) to be placed on the air dam (Fig.3).

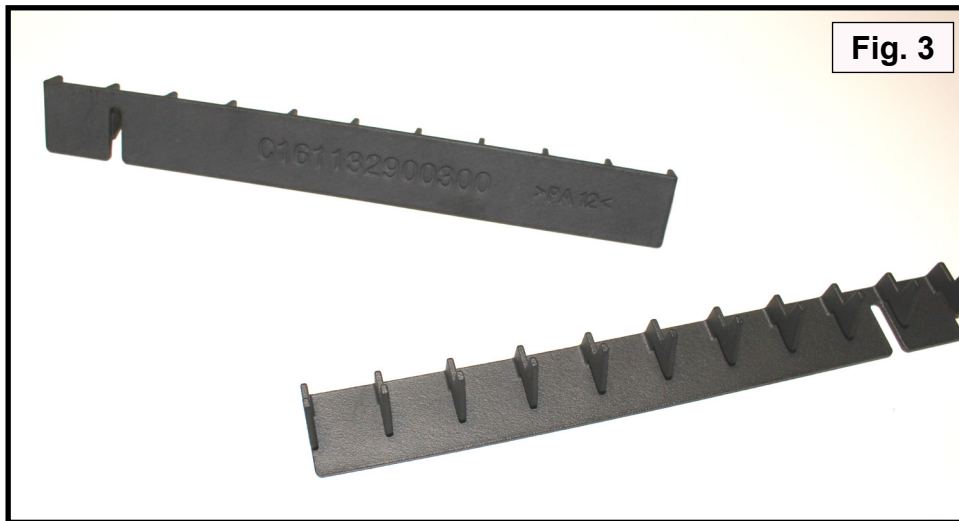


Fig. 3

Over view: Remove the air dam. The debris deflectors are installed with a press fit flush on to the air dam (fig.4) , the two parts are applied side by side (fig 5).



Fig. 4



Fig. 5

Karma Automotive Bulletins and service documents are intended for use by experienced and trained Technicians. If you lack the skills, tools, equipment and a suitable workshop for any procedure described in this document, we suggest you leave such repairs to a Karma retailer and service provider. See your service provider for advice on whether your vehicle may benefit from the information contained within this document. The information contained in the Karma Bulletin is accurate at the date of publication. However, Karma Automotive regularly updates technical information. Please check with your Karma Automotive Retailer and Karma Automotive service provider that the bulletin you intend to use contains the latest available information.

Title: Debris Inspection and Deflector Install

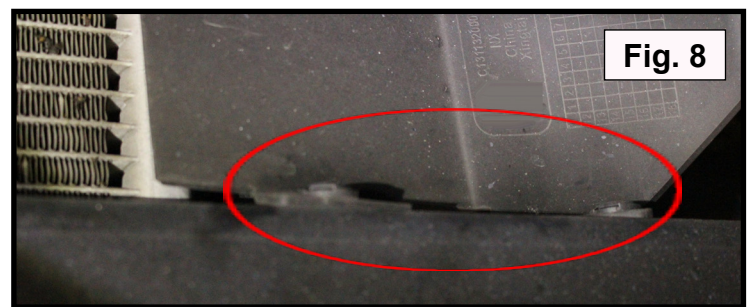
Applicability: MY18 & MY19 Revero

Market Region: All

1. Remove the air dam (Fig 6) it is secured by four (4) 10mm bolts and three (3) push pins (inset).



2. The push pins are located (facing the vehicle) one on the left (Fig 7) and two right top side (Fig.8) of the air dam.



Karma Automotive Bulletins and service documents are intended for use by experienced and trained Technicians. If you lack the skills, tools, equipment and a suitable workshop for any procedure described in this document, we suggest you leave such repairs to a Karma retailer and service provider. See your service provider for advice on whether your vehicle may benefit from the information contained within this document. The information contained in the Karma Bulletin is accurate at the date of publication. However, Karma Automotive regularly updates technical information. Please check with your Karma Automotive Retailer and Karma Automotive service provider that the bulletin you intend to use contains the latest available information.

Title: Debris Inspection and Deflector Install

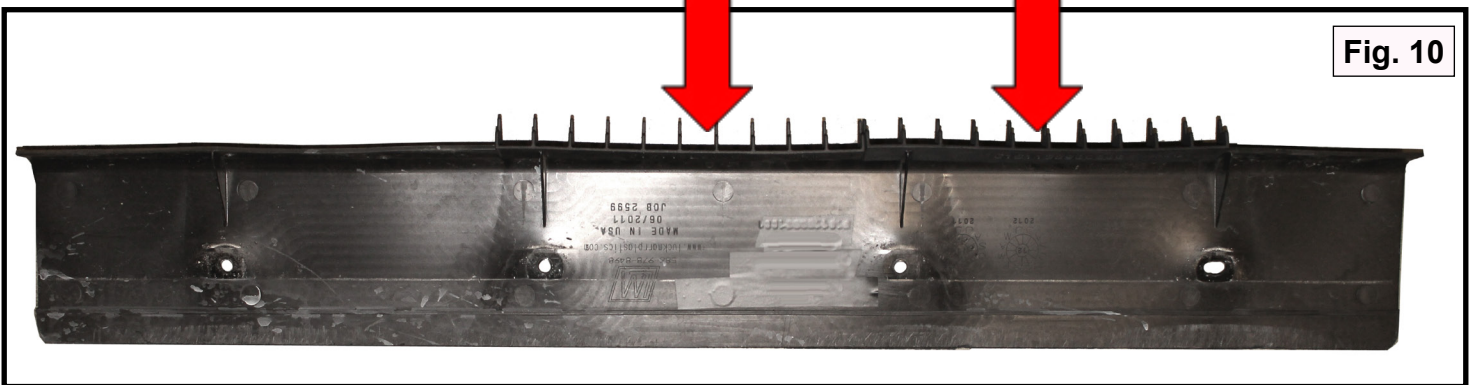
Applicability: MY18 & MY19 Revero

Market Region: All

For reference, the deflectors will sit as shown below (fig 9) without the air dam installed.



3. With the air dam removed install the deflectors in position, as shown (fig 10) and use a soft mallet to completely seat them.



4. Reinstall the air dam (Fig 11).



Karma Automotive Bulletins and service documents are intended for use by experienced and trained Technicians. If you lack the skills, tools, equipment and a suitable workshop for any procedure described in this document, we suggest you leave such repairs to a Karma retailer and service provider. See your service provider for advice on whether your vehicle may benefit from the information contained within this document. The information contained in the Karma Bulletin is accurate at the date of publication. However, Karma Automotive regularly updates technical information. Please check with your Karma Automotive Retailer and Karma Automotive service provider that the bulletin you intend to use contains the latest available information.



Type: Service Communication

Year: 2019

System: Cooling System

Sequence: 01

First Release Rev: 0.1

Title: Debris Inspection and Deflector Install

Applicability: MY18 & MY19 Revero

Market Region: All

PARTS REQUIRED:

PART NUMBER	DESCRIPTION	QUANTITY
C161132900100	KIT - (2) Deflector - Foreign object	1

SHOP SUPPLIES:

DESCRIPTION
N/A

SPECIAL TOOLS:

DESCRIPTION
N/A

CAUSAL PART:

PART NUMBER	DESCRIPTION
C131111102000	Radiator - Engine

LABOR CODES:

CODE	DESCRIPTION	TIME	DEFECT CODE
20-20-01-05	Install Deflector	0.5	20-20-01-28

SUBLET:

CODE	DESCRIPTION	AMOUNT
N/A		

WARRANTY DISPOSITION: This repair is covered under the New Vehicle Limited Warranty, in effect for five (5) years from the in-service date with no mileage limitation.

Karma Automotive Bulletins and service documents are intended for use by experienced and trained Technicians. If you lack the skills, tools, equipment and a suitable workshop for any procedure described in this document, we suggest you leave such repairs to a Karma retailer and service provider. See your service provider for advice on whether your vehicle may benefit from the information contained within this document. The information contained in the Karma Bulletin is accurate at the date of publication. However, Karma Automotive regularly updates technical information. Please check with your Karma Automotive Retailer and Karma Automotive service provider that the bulletin you intend to use contains the latest available information.