



# Service Bulletin

## PRELIMINARY INFORMATION

**Subject:** Information for Programming More Than 8 Keys

**Models:** 2015 – 2018 Chevrolet Silverado

2015 – 2020 Chevrolet Tahoe

With (RPO 5W4) Special Service Vehicle or (RPO 9C1) Police Patrol Vehicle AND Equipped with Fleet Key SEO option (RPO 6E2) or (RPO 6E8)

*This PI is being revised to update the Models, Model Years, and the Condition/Concern Section. Please discard PI1369.*

### Condition/Concern

Some customers may want to learn more than 8 keys to a vehicle.

**Note:** More than 8 remote keyless entry transmitters CANNOT be learned to the vehicle.

**Note:** Only vehicles listed above with RPO 9C1 or 5W4, **along with** 6E2 or 6E8, have the ability to learn more than 8 additional keys.

### Recommendation/Instructions

Follow the steps below to learn more than 8 keys:

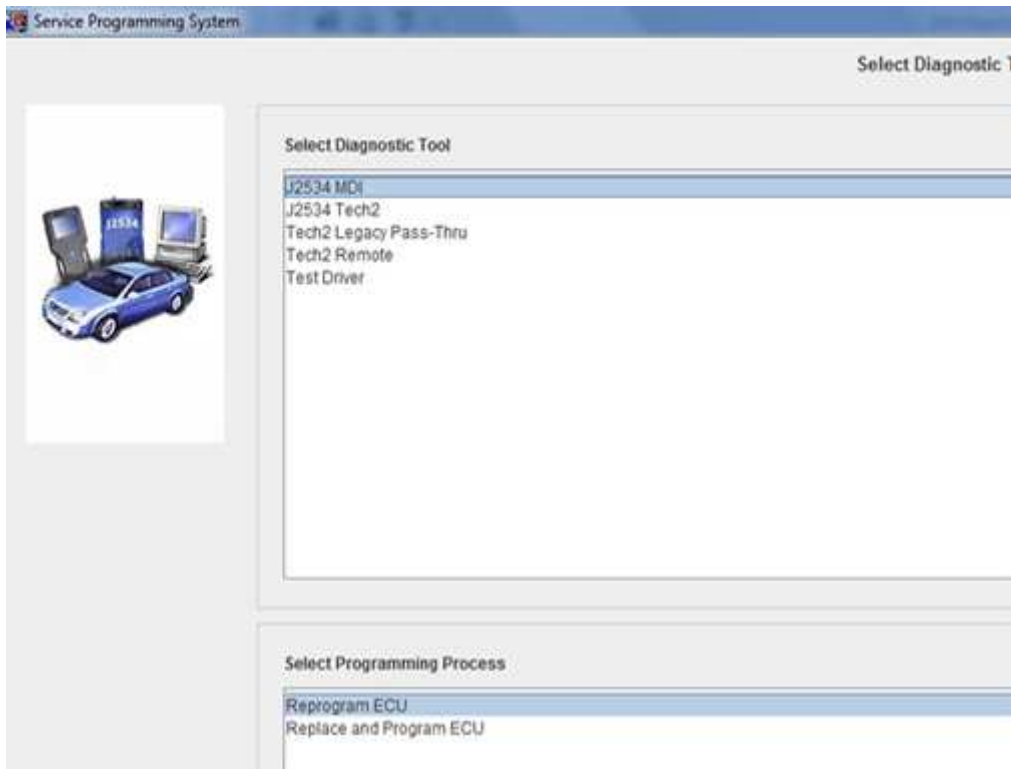
**Important:** Make sure the vehicle is out of transport mode and ignition off for at least 15 seconds before trying to program any keys.

When more than 8 keys are needed and:

- Only 2 keys are currently learned to the vehicle, use the "Programming Additional Keys (without BTM)" procedure listed in SI. Then proceed to step 1 below.
- 8 keys have already been learned, proceed directly to step 1.

**Important:** During programming, the battery voltage must be maintained within the proper range of 12-15.5 volts. **CONNECT** the approved Midtronics® PSC 550 Battery Maintainer (SPS Programming Support Tool (EL-49642) to the vehicle or the GR8 (EL50313) in the power supply mode.

1. Connect an MDI to the vehicle and to the Techline PC.
2. Ensure that all power consuming devices are turned OFF on the vehicle.



3. Select the SPS application and follow the on-screen instructions.

**Validate/Select Vehicle Data**

<b>Salesmake</b>	Chevrolet
<b>Model Year</b>	2015
<b>Vehicle Type</b>	LD Trk, MPV, Incomplete
<b>Car Line</b>	Tahoe

4. Select Chevrolet 2015/LD Trk, MPV, Incomplete/Tahoe.

K17	Electronic Brake Control Module - Programming
K17	Electronic Brake Control Module - Setup and Configuration
K20	Engine Control Module - Programming
K20	Engine Control Module - Setup
K109	Frontview Camera Module - Programming
K74	Human Machine Interface Control Module - Programming
K74	Human Machine Interface Control Module - USB File Transfer
K33	HVAC Control Module - Programming
Z1	Immobilizer Learn - Setup
K36	Inflatable Restraint Sensing and Diagnostic Module - Programming and Setup
P16	Instrument Cluster - Programming, Setup and Configuration
P16	Instrument Cluster - USB File Transfer
K84	Keyless Entry Control Module - Programming
K39	Liftgate Control Module - Programming
K39	Liftgate Control Module - Setup
A33	Media Disc Player - Programming
K83	Parking Brake Control Module - Programming
K83	Parking Brake Control Module - Setup
K43	Power Steering Control Module - Programming
K43	Power Steering Control Module - Setup
SEQ	Programming Sequence Seat Belt Retractor Motor Module - Left/Right (M101L/M101R)
A11	Radio - Programming
K40	Roll-Over Protection Control Module - Programming

Select Programming Type

Normal  
VCI

5. Select "Immobilizer Learn-Setup" – "Normal" and then select "Next."

### Service Programming System (SPS) - Special Function

#### IMMO - Immobilizer Learn

Please Make a Selection

Body Control Module IMMO Learn with Existing Transponder or Remote Key  
 Body Control Module IMMO Learn with New Transponder or Remote Key  
 Engine Control Module IMMO Learn  
 Engine Control Module and Body Control Module IMMO Learn  
 Program Transponder or Remote Key (Add)  
 Program Transponder or Remote Key (Delete)  
 Transponder Key Diagnosis  
 Exit

#### Attention!

All Transponder-Keys will be erased. All available Transponder-Keys must be relearned.  
 - Existing vehicle keys can be relearned  
 - Additional vehicle keys can be learned  
 Please make sure that the Body Control Module and the Engine Control Module contain the latest software.  
 Please turn off all power consuming components after each ignition cycle.

6. Select the "Program Transponder or Remote Key (Delete)" function then select "Next." And continue to follow on screen instructions.

**IMMO - Immobilizer Learn**

**Turn the vehicle to the OFF-Power Mode**

**Current Power Mode Status: Run**

5

< Back

Next >

Cancel

**IMMO - Immobilizer Learn**

**Turn the vehicle to the RUN-Power Mode**

**Do not start engine!**

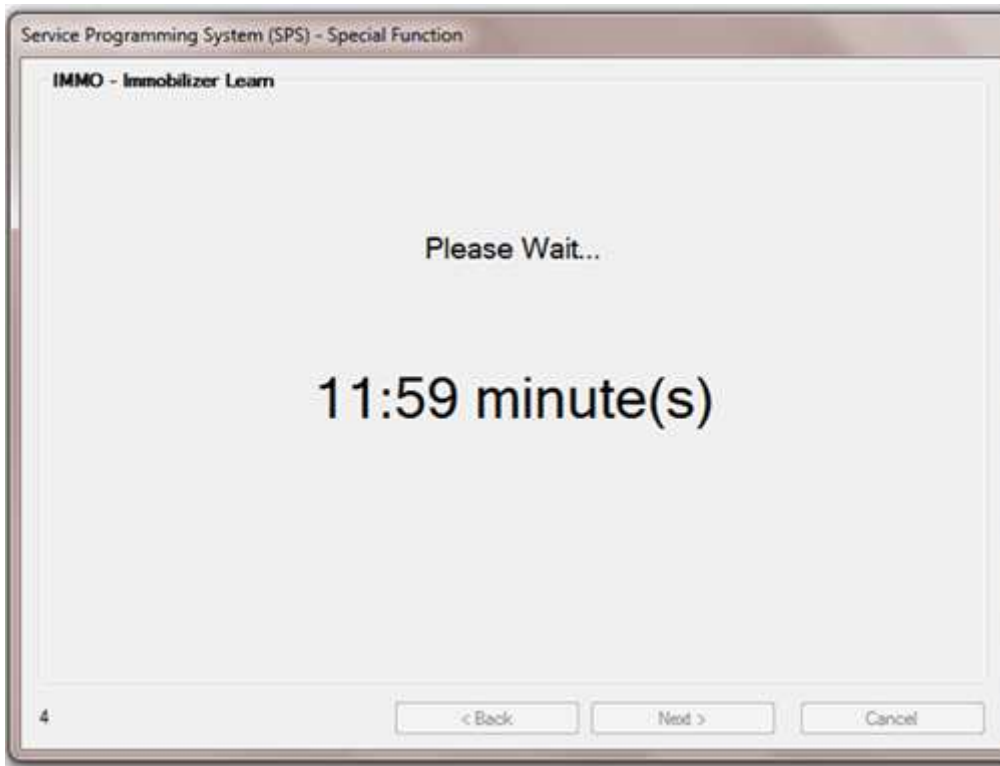
**Current Power Mode Status: Off**

5

< Back

Next >

Cancel



7. After the timer counts down to zero, all stored key information is deleted.



**IMMO - Immobilizer Learn**

Turn the vehicle to the OFF-Power Mode and remove Key

Current Power Mode Status: Run

5

< Back

Next >

Cancel

**IMMO - Immobilizer Learn**

Open and close driver's door. Avoid turning on or operating any accessories (radio, headlights, etc) at this time. Press Next to proceed

5

< Back

Next >

Cancel

**IMMO - Immobilizer Learn**

Please Wait...

45 second(s)

5

< Back

Next >

Cancel

**IMMO - Immobilizer Learn**

Turn the vehicle to the RUN-Power Mode with the Transponder Key,  
which shall be learned.

Do not start engine!

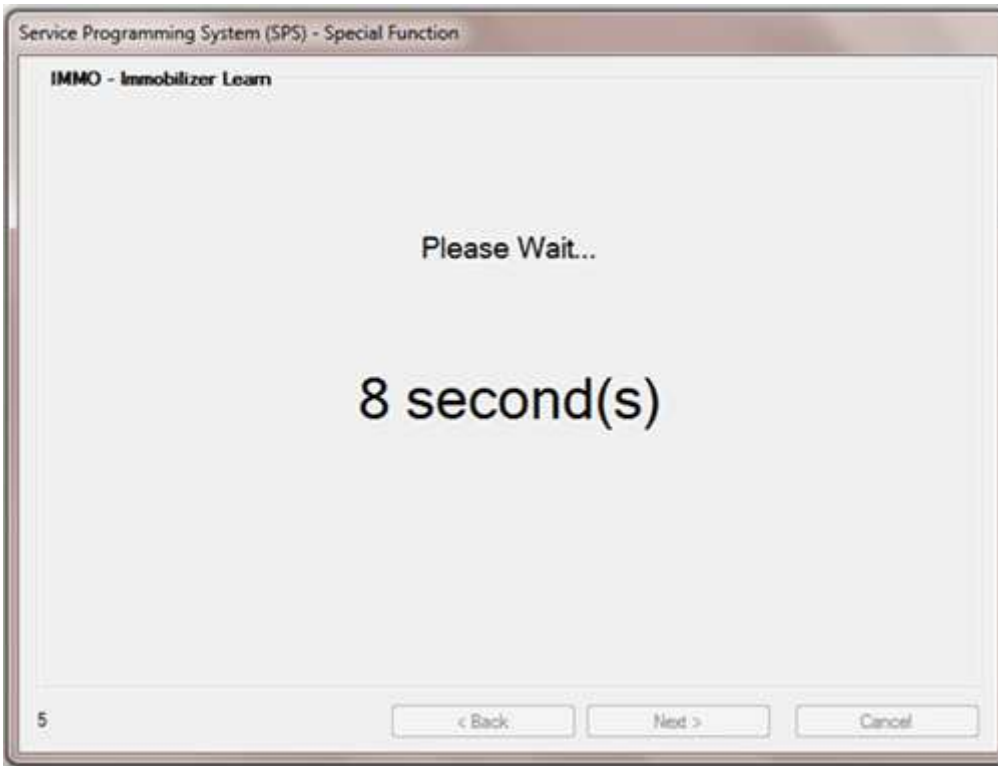
Current Power Mode Status: Off

5

< Back

Next >

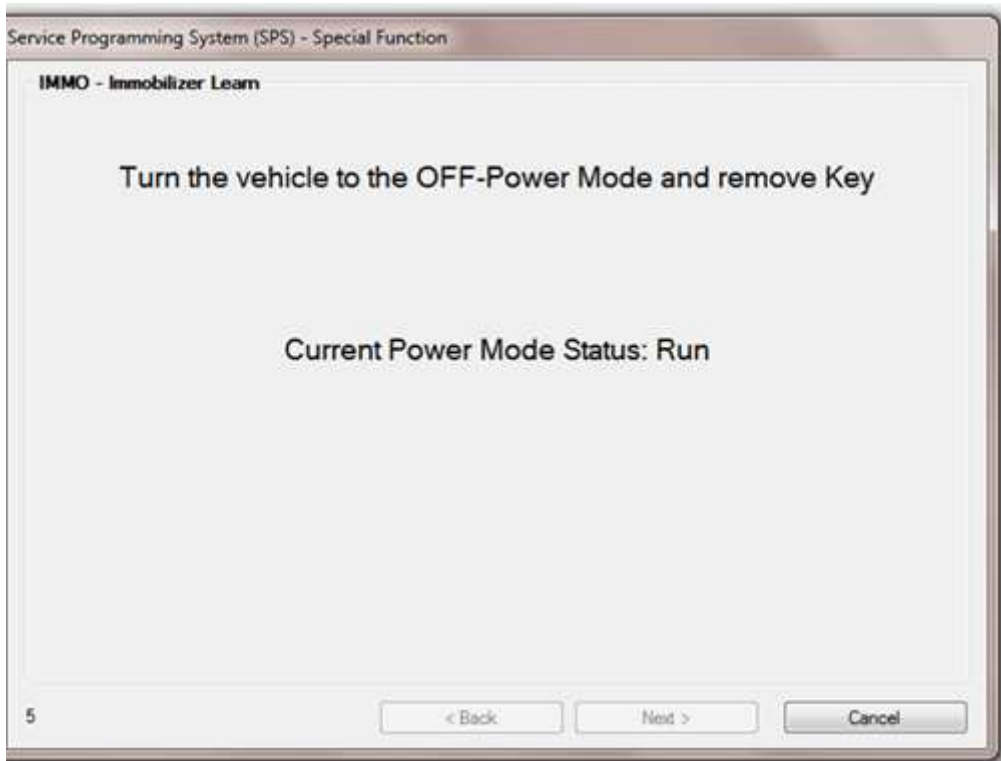
Cancel







8. Repeat "learn more keys" up to 8 TOTAL KEYS.
9. Continue to follow on screen instructions.
10. Once 8 keys have been learned, follow the final screens shown below.



**IMMO - Immobilizer Learn**

Open and close driver's door. Avoid turning on or operating any accessories (radio, headlights, etc) at this time. Press Next to proceed

5

< Back

Next >

Cancel

**IMMO - Immobilizer Learn**

Please Wait...

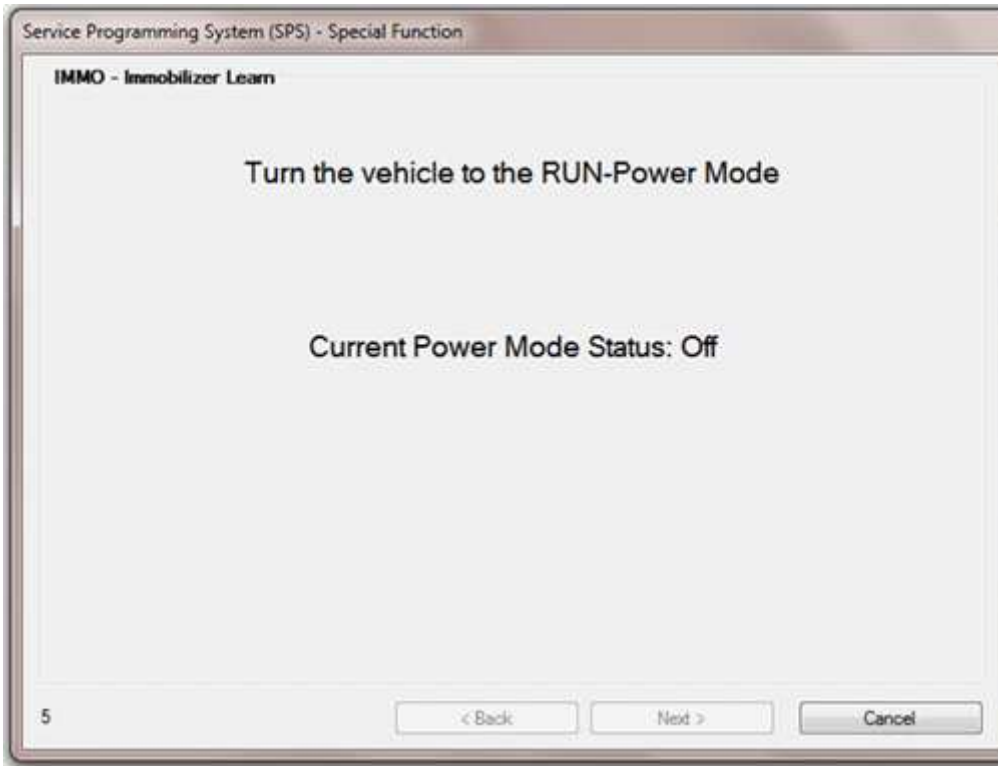
45 second(s)

5

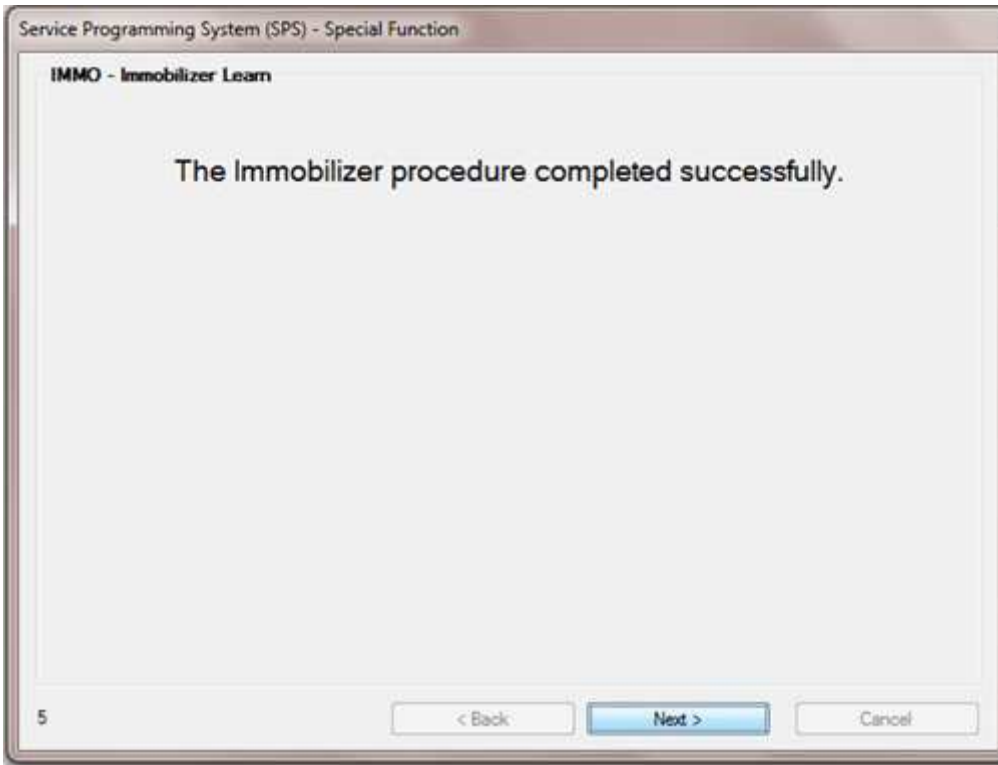
< Back

Next >

Cancel



11. Using a learned key, turn vehicle to "RUN" mode.

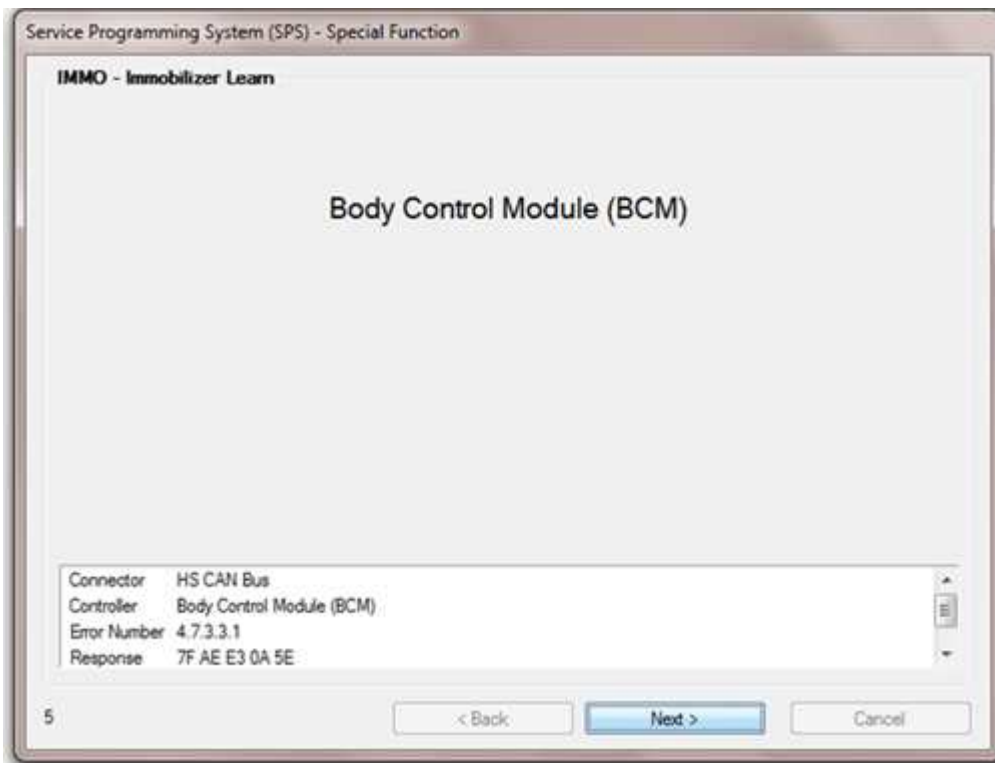




12. If additional keys need to be learned, return to step 5. This will clear all the displayed key memory again and allow another 8 keys to be learned. Repeat until required keys are learned.
13. With a GDS 2, clear any DTCs.
14. Verify each key is operating properly. Operate each of the RKE functions and then use a key to start the vehicle. All keys and all transmitter operation must be verified.

**Note:** The RKE functionality should not change with this procedure and they should not require relearning.

**Note:** An unlimited amount of keys can be learned, but the BCM will only allow 8 RKE transmitters to be learned to the vehicle. If more than 8 transmitters are learned, these transmitters will not be able to be learned to any other vehicle again.



**Note:** Once 8 keys are learned if you continue to attempt to learn more keys, you will get an error message because the 8 key slots are full.

## Parts Information

Use the vehicle identification number (VIN), and the GM Electronic Parts Catalog (EPC) to determine the proper part to order.

## Warranty Information

Labor associated with this procedure should NOT be charged under warranty. Rather, this should be customer pay.

---

GM bulletins are intended for use by professional technicians, NOT a "do-it-yourselfer". They are written to inform these technicians of conditions that may occur on some vehicles, or to provide information that could assist in the proper service of a vehicle. Properly trained technicians have the equipment, tools, safety instructions, and know-how to do a job properly and safely. If a condition is described, DO NOT assume that the bulletin applies to your vehicle, or that your vehicle will have that condition. See your GM dealer for information on whether your vehicle may benefit from the information.



WE SUPPORT VOLUNTARY TECHNICIAN CERTIFICATION