

11/14/2019
CAL FTL 20-001

Subject: TitanX Radiator Quick Fill/Drain Fitting Replacement

Models Affected: Freightliner Business Class M2 vehicles, Model Year 2019

Our records indicate that you are the owner of certain vehicles, and DTNA has decided to share the following documentation with you.

Please see the attached communication in this email. We hope you find this information helpful.

11/14/2019
CAL FTL 20-001

Work Instructions

Subject: TitanX Radiator Quick Fill/Drain Fitting Replacement

Models Affected: Freightliner Business Class M2 vehicles, Model Year 2019

1. Park the vehicle on a level surface, shut down the engine, and apply the parking brakes. Chock the tires.
2. Disconnect the batteries at the negative post.
3. Place a large container under the radiator.

WARNING

Do not attempt to drain the cooling system until the coolant and engine are cool. Draining the cooling system prior to cooling could cause personal injury due to scalding.

4. Remove the quick-connect fitting from the lower tank of the radiator. See [Fig. 1](#).



Fig. 1, Quick-Connect Fitting

5. Allow the coolant to drain.

NOTE: When tightening the fitting, take care to not cross-thread the lower tank of the radiator.

6. Install the replacement drain valve. If installing the plastic drain valve shown in [Fig. 2](#), tighten the valve to 50 lbf·in (565 N·cm). If retrofitting to the all-brass ESOC fitting as shown in [Fig. 3](#), tighten the fitting to 135 lbf·in \pm 10 (1525 N·cm).

11/14/2019
CAL FTL 20-001



Fig. 2, Drain Valve Fitting

11/14/2019
CAL FTL 20-001

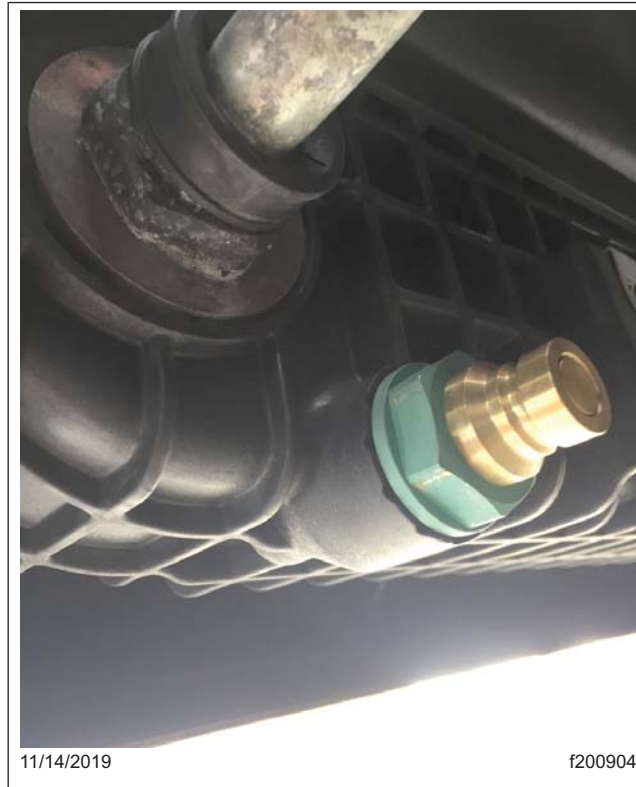


Fig. 3, All-Brass ESOC Fitting

7. Fill the radiator with coolant. Refer to the engine manufacturer's service literature for specific coolant information.
8. Connect the batteries.
9. Start the vehicle and bring it to operating temperature.
10. Check for leaks.