

# 2020 NX300, NX300h Pre-Delivery Service (PDS)

**Service Category** General

**Section** Pre-Delivery Service

**Market** USA



## Applicability

YEAR(S)	MODEL(S)	ADDITIONAL INFORMATION
2020	NX300, NX300H	

### REVISION NOTICE

October 25, 2019 Rev1:

- The Deletion of Vehicle Alert History section has been added.
- Any previous printed versions of this bulletin should be discarded.

## Introduction

This bulletin contains the vehicle specific pre-delivery services for 2020 model year NX300 and NX300h vehicles. Additionally, refer to the applicable Pre-Delivery Service (PDS) Check Sheet for services to be performed.

## Warranty Information

OP CODE	DESCRIPTION	TIME	OFFP	T1	T2
N/A	Not Applicable to Warranty	-	-	-	-

## Procedures

- Front License Plate and Mounting Bracket Installation..... 2
- D/C Cut Fuse Installation ..... 4
- Deletion of Vehicle Alert History..... 5

## 2020 NX300, NX300h Pre-Delivery Service (PDS)

### Front License Plate and Mounting Bracket Installation

The front license plate mounting bracket and two self-tapping screws for the 2020 model year NX300 and NX300h are stored in the rear cargo area of the vehicle. Install the license plate and mounting bracket during PDS.

1. Install the mounting bracket.
  - A. Align holes "A" of the mounting bracket with the dimples on the radiator lower grille.

**NOTE**

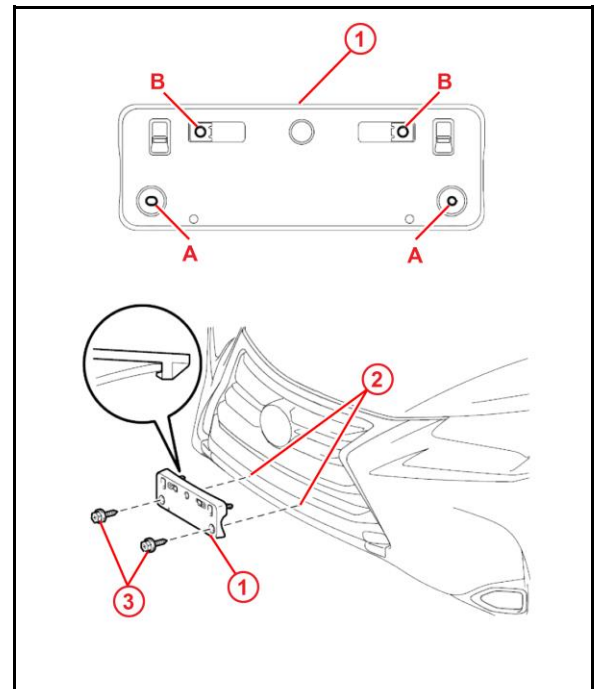
- Holes "A" are used to install the mounting bracket onto the bumper cover.
- Holes "B" are used to install the license plate onto the mounting bracket.

- B. Engage the two clips and screw the two supplied self-tapping screws directly into the dimples to install the front license plate mounting bracket.

**NOTICE**

- Do NOT pre-drill holes into the dimples on the front bumper cover.
- Do NOT overtighten the self-tapping screws.

**Figure 1.**



<b>1</b>	<b>Mounting Bracket</b>
<b>2</b>	<b>Dimple</b>
<b>3</b>	<b>Self-tapping Screw</b>

## 2020 NX300, NX300h Pre-Delivery Service (PDS)

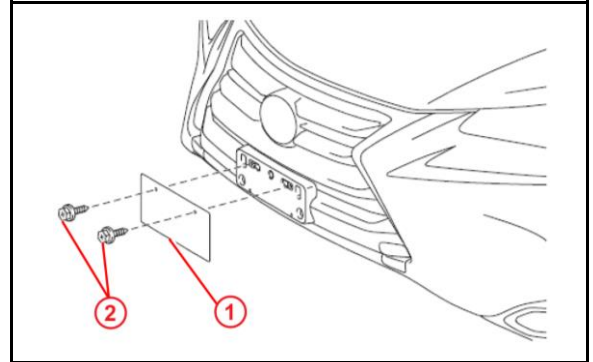
### Front License Plate and Mounting Bracket Installation (continued)

- Install the front license plate onto the mounting bracket using two noncorroding bolts with the following dimensions.

**Nominal Length: 15.0 mm (0.59 in.)**

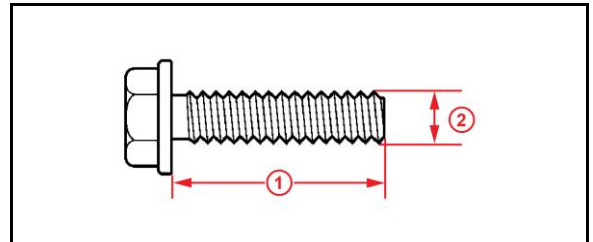
**Diameter: 6.0 mm (0.24 in.)**

**Figure 2.**



<b>1</b>	Front License Plate
<b>2</b>	Bolt

**Figure 3.**



<b>1</b>	Nominal Length
<b>2</b>	Diameter

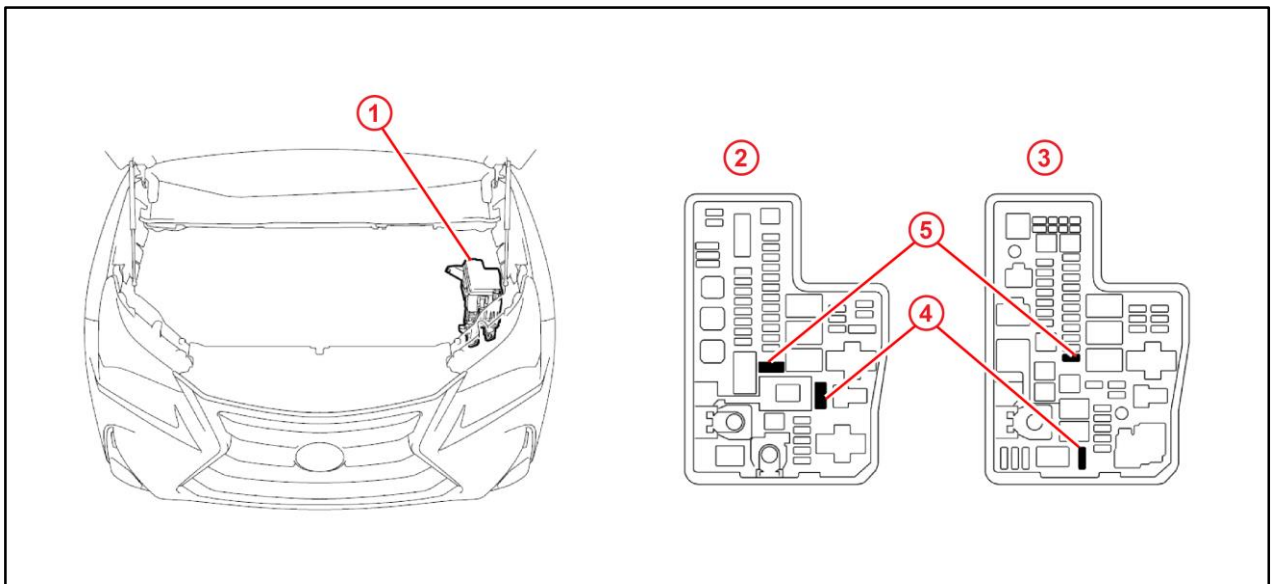
## 2020 NX300, NX300h Pre-Delivery Service (PDS)

### D/C Cut Fuse Installation

To minimize battery discharge during transportation and storage, the D/C cut fuse (20A) has been removed at the assembly plant and temporarily stored in the blank space of the relay block in the engine compartment. During PDS, reinstall the D/C cut fuse (20A) into its original location and clear ALL related Diagnostic Trouble Codes (DTCs)

Remove the D/C cut fuse (20A) from the blank space of the relay block in the engine compartment and install it in the location shown.

**Figure 4.**



<b>1</b>	<b>Relay Block</b>
<b>2</b>	<b>For Hybrid Vehicles</b>
<b>3</b>	<b>For Gasoline Vehicles</b>

<b>4</b>	<b>Remove This D/C Cut Fuse (20A)</b>
<b>5</b>	<b>Install D/C Cut Fuse (20A) Here (Original Location)</b>

#### NOTE

While the vehicle is stored at the dealership, disconnect the negative (-) battery terminal to prevent battery discharge. Refer to Service Bulletin No. [L-SB-0013-19](#), *Battery Maintenance During PDS*, for battery maintenance information.

## 2020 NX300, NX300h Pre-Delivery Service (PDS)

---

### Deletion of Vehicle Alert History

As the D/C cut fuse is removed, the communication between the various ECUs is interrupted. When the D/C fuse is reinstalled, the communication status is restored, but Lexus Enform Service Connect may store malfunction history in the form of vehicle alert history. Therefore, it is necessary to operate the multi-display and delete the vehicle alert history after installing the D/C cut fuse during PDS at the dealership.

1. Deletion procedure.
  - A. Turn the engine switch (power switch) to the “ON” position (“ON” mode).
  - B. Push the Menu switch on the remote touch device.
  - C. On the multi-display, enter the following menus: *Info – Vehicle Alert History*.
  - D. If there is vehicle alert history, perform the Delete History operation.

**HINT**

If there is no vehicle alert history stored, the system will display a message stating that “There is no vehicle alert history.”

- E. When the vehicle alert history deletion confirmation screen is displayed, select Yes.

**HINT**

When deletion of the vehicle alert history is complete, the system will display a message stating that “There is no vehicle alert history.”

- F. Turn the engine switch (power switch) to the “OFF” position (“OFF” mode).