



AUTOMOBILE DIVISION
American Honda Motor Co., Inc.
1919 Torrance Blvd., - P.O. Box 2215
Torrance, CA 90509-9870

November 2019

This notice applies to your vehicle: XXXXXXXXXXXXXXXXXXXX

Product Update: 2019 Passport Owner's Guide

Dear FIRSTNAME LASTNAME:

What is the reason for this product update?

The IMPORTANT HANDLING INFORMATION section is missing from the SAFETY INFORMATION section on page 3 of your owner's guide.

What should you do?

Enclosed is an update sticker that needs to be applied to your owner's guide and set of instructions on how to do it.

Lessor Information

Please forward a copy of this notice to the lessee.

What to do if you feel this notice is in error

Our records show that you are the current registered owner of a 2019 Passport involved in this product update. If this is not the case, or the name/address information is not correct, please fill out and return the enclosed, postage-paid Information Change Card. We will then update our records.

If you have questions

If you have any questions about this notice, or need assistance with locating a Honda dealer, please call American Honda's Customer Support & Campaign Center at **1-888-234-2138**. You can also visit *AskDave.honda.com* to use our 24/7 virtual agent, or locate a dealer online at *Hondacars.com*. If you are a customer in a U.S territory, please contact your local distributor/dealer.

We apologize for any inconvenience this campaign may cause you.

Sincerely,

American Honda Motor Co., Inc.

Noviembre del 2019

Esta notificación aplica a su vehículo: XXXXXXXXXXXXXXXXXXXX

Actualización de producto: Guía del propietario del Passport 2019

Estimado FIRSTNAME LASTNAME:

¿Cuál es el motivo de esta actualización de producto?

La sección "IMPORTANT HANDLING INFORMATION" (INFORMACIÓN IMPORTANTE PARA LA MANIPULACIÓN) falta en la sección "SAFETY INFORMATION" (INFORMACIÓN DE SEGURIDAD) en la página 3 de su guía del propietario.

¿Qué debe hacer?

Adjunta está una calcomanía actualizada que necesita ser aplicada a su guía del propietario y un juego de instrucciones sobre cómo hacerlo.

Información para el arrendador

Por favor envíe una copia de esta notificación al arrendatario.

Qué debe hacer si considera que esta notificación es errónea

Nuestros registros muestran que usted es el propietario actual registrado de un vehículo Passport 2019 el cual forma parte de esta actualización de producto. Si no es el caso, o si la información de nombre/dirección no está correcta, por favor llene y devuelva la Tarjeta de Cambio de Información anexa pre-pagada. Con esto actualizaremos nuestros registros.

Si tiene preguntas

Si tiene preguntas acerca de esta notificación o si necesita asistencia para ponerse en contacto con un concesionario Honda, por favor comuníquese con el Centro de Apoyo al Cliente y Campañas de American Honda al **1-888-234-2138**. Para más información también puede visitar www.recalls.honda.com, o puede ubicar un concesionario en línea en *Hondacars.com*. Si usted es un cliente en un territorio de Los Estados Unidos, por favor comuníquese con su concesionario/distribuidor local.

Le pedimos disculpas por cualquier inconveniente que esta campaña pudiera causarle.

Atentamente,

American Honda Motor Co., Inc.



Update Sticker Application Instructions

NOTE

- Please review the following instructions before you start.
- Wash and dry your hands thoroughly before starting this procedure.

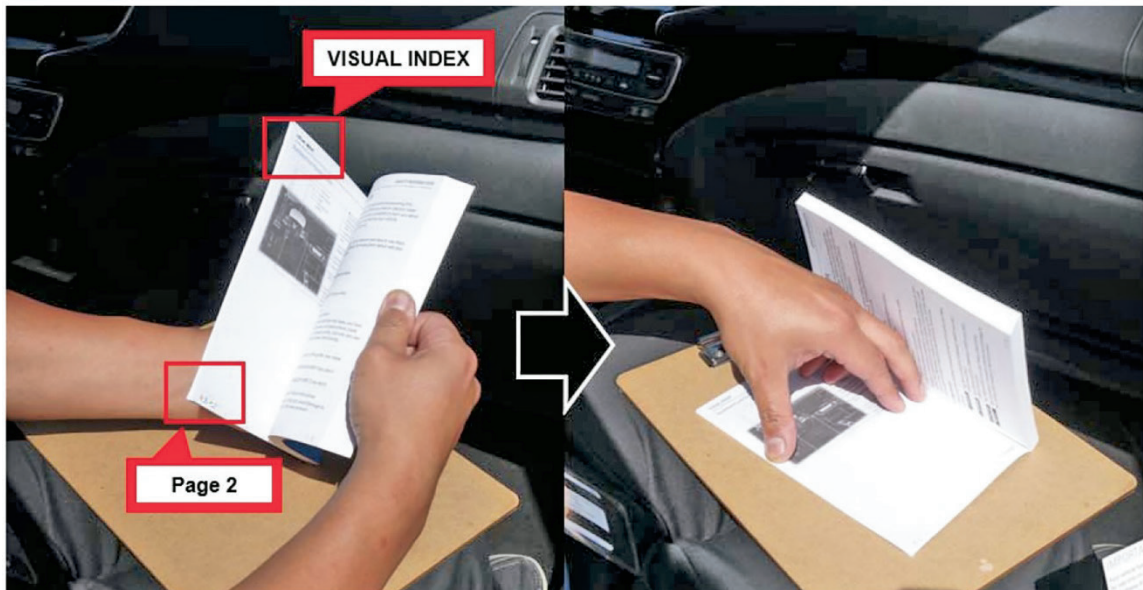
1. Remove the *Owner Information Kit* from the glove box, and pull out the owner's guide.



2. Lay a clipboard or a hardcover book on your lap. You can also use a desk or table.
3. Go to VISUAL INDEX on page 2, and lay down the owner's guide as shown.

NOTE

To avoid creasing the cover or the pages, do not bend them excessively.



4. **Line up the IMPORTANT HANDLING INFORMATION sticker.** Before removing the adhesive backing of the sticker, line up the right edge to the *d* of the *1 – *If equipped* on the lower-right corner of page 2. The sticker should line up as shown.

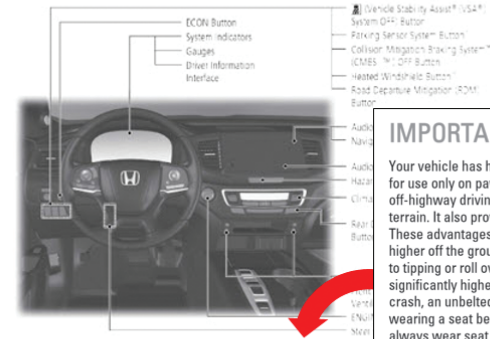
IMPORTANT HANDLING INFORMATION Sticker

IMPORTANT HANDLING INFORMATION

Your vehicle has higher ground clearance than a passenger vehicle designed for use only on pavement. Higher ground clearance has many advantages for off-highway driving. It allows you to travel over bumps, obstacles, and rough terrain. It also provides good visibility so you can anticipate problems earlier. These advantages come at some cost. Because your vehicle is taller and rides higher off the ground, it has a higher center gravity making it more susceptible to tipping or roll over if you make abrupt turns. Utility vehicles have a significantly higher rollover rate than other types of vehicles. In a rollover crash, an unbelted person is significantly more likely to die than a person wearing a seat belt. As a reminder, make sure you and your passengers always wear seat belts.

VISUAL INDEX

Dashboard and Nearby Controls



- ECON Button
- System Indicators
- Gauges
- Driver Information Interface
- Vehicle Stability Assist* (VSA)*
- System OFF Button
- Parking Sensor System Button
- Collision Mitigation Braking System**
- ICMBS *1 OFF Button
- Heated Windshield Button
- Road Departure Mitigation (RDM) Button
- Audio
- Navigation
- Audio
- HAZ
- Climate
- Audio
- Buttons
- Audio
- Buttons
- Audio
- Buttons

SAFETY INFORMATION

IMPORTANT HANDLING INFORMATION

Your vehicle has higher ground clearance than a passenger vehicle designed for use only on pavement. Higher ground clearance has many advantages for off-highway driving. It allows you to travel over bumps, obstacles, and rough terrain. It also provides good visibility so you can anticipate problems earlier. These advantages come at some cost. Because your vehicle is taller and rides higher off the ground, it has a higher center gravity making it more susceptible to tipping or roll over if you make abrupt turns. Utility vehicles have a significantly higher rollover rate than other types of vehicles. In a rollover crash, an unbelted person is significantly more likely to die than a person wearing a seat belt. As a reminder, make sure you and your passengers always wear seat belts.

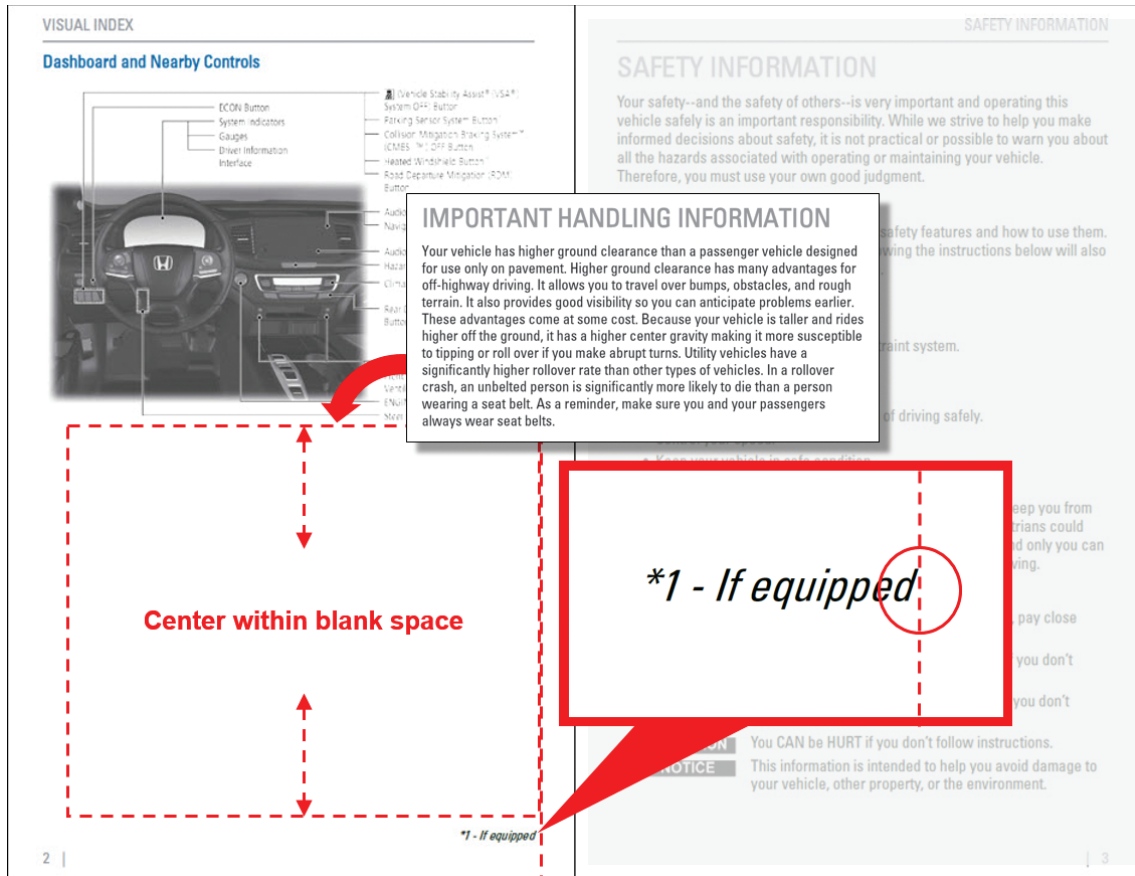
Center within blank space

**1 - If equipped*

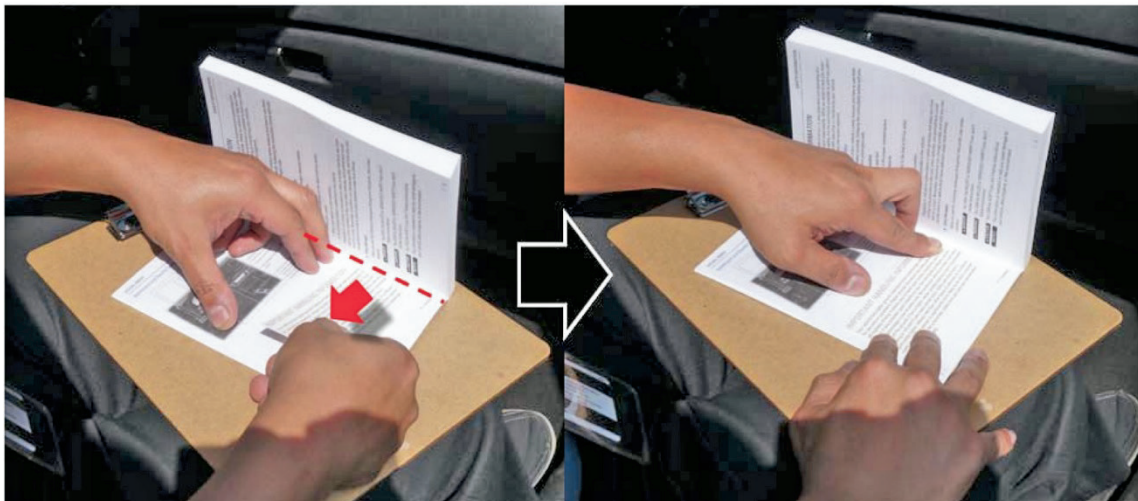
5. **Attach the sticker.** Remove the adhesive backing, and attach the sticker's right edge along the *d* of the *1 – *If equipped*.

NOTE

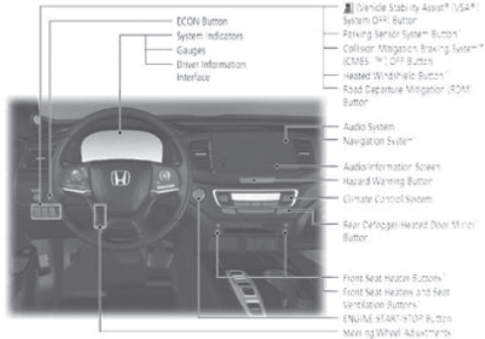
It is OK to touch the adhesive side of the sticker if needed.



6. Using even pressure, slowly attach the sticker, working from the inside edge of the page to the outside. Be careful not to form air bubbles under the sticker or creases on the sticker and the page.



The updated page 2 should look as shown.

VISUAL INDEX	SAFETY INFORMATION								
<p>Dashboard and Nearby Controls</p>  <p>Labels include: ECO Button, System Indicators, Gauges, Driver Information Interface, Vehicle Stability Assist (VSA)*1, System OFF Button, Parking Sensor System* Button, Collision Mitigation Braking System™ (CMBS)™ OFF Button, Heated Windshield Button, Road Departure Mitigation (RDM) Button, Audio System, Navigation System, Audio Information Screen, Hazard Warning Button, Climate Control System, Rear Defogger/Heated Door Mirror Button, Front Seat Heater Buttons, Front Seat Heaters and Seat Ventilation Buttons, (ENGINE START/STOP) Button, Steering Wheel Adjustments.</p>	<p>SAFETY INFORMATION</p> <p>Your safety--and the safety of others--is very important and operating this vehicle safely is an important responsibility. While we strive to help you make informed decisions about safety, it is not practical or possible to warn you about all the hazards associated with operating or maintaining your vehicle. Therefore, you must use your own good judgment.</p> <p>Important Safety Information</p> <p>This guide explains many of your vehicle's safety features and how to use them. Please read this information carefully. Following the instructions below will also help to keep you and your passengers safe.</p> <ul style="list-style-type: none"> ■ Important Safety Precautions <ul style="list-style-type: none"> • Always wear your seat belt. • Secure all children in the proper restraint system. • Be aware of airbag hazards. • Don't drink and drive. • Pay appropriate attention to the task of driving safely. • Control your speed. • Keep your vehicle in safe condition. • Do not leave children unattended in the vehicle. <p>Engaging in cell phone conversation or other activities that keep you from paying close attention to the road, other vehicles, and pedestrians could lead to a crash. Remember, situations can change quickly, and only you can decide when it is safe to divert some attention away from driving.</p> <ul style="list-style-type: none"> ■ Safety Messages <p>When you see the following messages throughout this guide, pay close attention.</p> <table style="width: 100%; border: none;"> <tr> <td style="width: 15%; padding: 2px;">▲ DANGER</td> <td style="padding: 2px;">You WILL be KILLED or SERIOUSLY HURT if you don't follow instructions.</td> </tr> <tr> <td style="padding: 2px;">▲ WARNING</td> <td style="padding: 2px;">You CAN be KILLED or SERIOUSLY HURT if you don't follow instructions.</td> </tr> <tr> <td style="padding: 2px;">▲ CAUTION</td> <td style="padding: 2px;">You CAN be HURT if you don't follow instructions.</td> </tr> <tr> <td style="padding: 2px;">▲ NOTICE</td> <td style="padding: 2px;">This information is intended to help you avoid damage to your vehicle, other property, or the environment.</td> </tr> </table>	▲ DANGER	You WILL be KILLED or SERIOUSLY HURT if you don't follow instructions.	▲ WARNING	You CAN be KILLED or SERIOUSLY HURT if you don't follow instructions.	▲ CAUTION	You CAN be HURT if you don't follow instructions.	▲ NOTICE	This information is intended to help you avoid damage to your vehicle, other property, or the environment.
▲ DANGER	You WILL be KILLED or SERIOUSLY HURT if you don't follow instructions.								
▲ WARNING	You CAN be KILLED or SERIOUSLY HURT if you don't follow instructions.								
▲ CAUTION	You CAN be HURT if you don't follow instructions.								
▲ NOTICE	This information is intended to help you avoid damage to your vehicle, other property, or the environment.								
<p>IMPORTANT HANDLING INFORMATION</p> <p>Your vehicle has higher ground clearance than a passenger vehicle designed for use only on pavement. Higher ground clearance has many advantages for off-highway driving. It allows you to travel over bumps, obstacles, and rough terrain. It also provides good visibility so you can anticipate problems earlier. These advantages come at some cost. Because your vehicle is taller and rides higher off the ground, it has a higher center gravity making it more susceptible to tipping or roll over if you make abrupt turns. Utility vehicles have a significantly higher rollover rate than other types of vehicles. In a rollover crash, an unbelted person is significantly more likely to die than a person wearing a seat belt. As a reminder, make sure you and your passengers always wear seat belts.</p>	<p>*1 - If equipped</p>								
2	3								

7. Insert the owner's guide into the *Owner Information Kit*, and return the kit to the glove box.

Instrucciones de aplicación de la calcomanía actualizada

NOTA

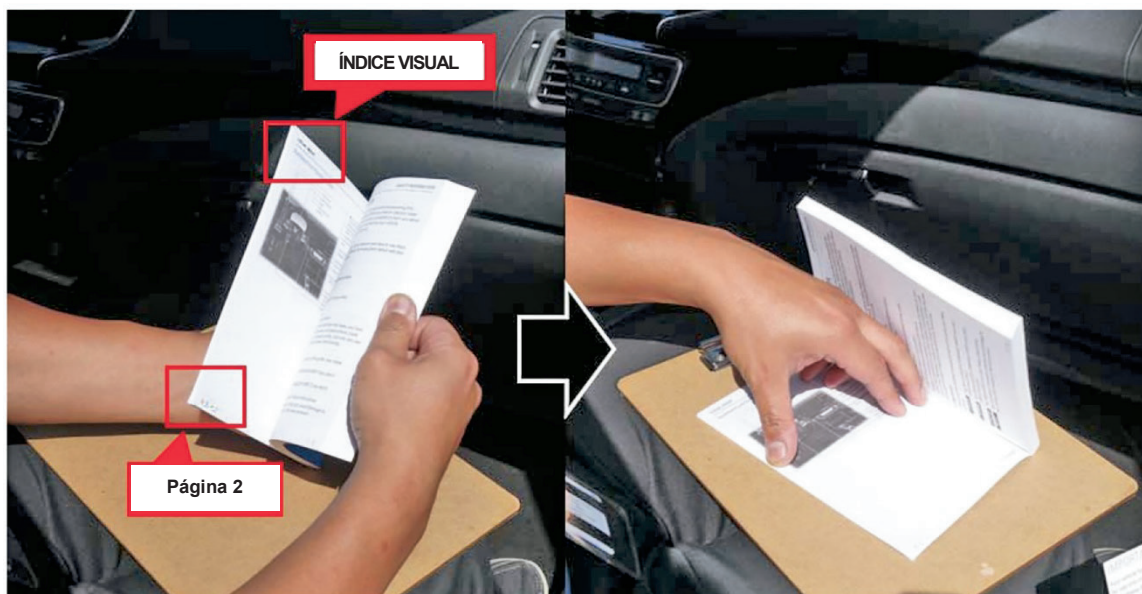
- Por favor revise las instrucciones siguientes antes de comenzar.
 - Lave y seque sus manos meticulosamente antes de comenzar este procedimiento.
1. Retire el *Juego de Información del Propietario* de la guantera y retire la guía del propietario.



2. Coloque un portapapeles o un libro de cubierta dura en su regazo. Usted también puede utilizar un escritorio o una mesa.
3. Vaya al VISUAL INDEX (ÍNDICE VISUAL) en la página 2 y coloque la guía del propietario como se muestra.

NOTA

Para evitar plegar la cubierta o las páginas, no lo doble excesivamente.



- Coloque de forma alineada la calcomanía de “IMPORTANT HANDLING INFORMATION” (INFORMACIÓN IMPORTANTE PARA LA MANIPULACIÓN). Antes de retirar la cinta adhesiva de la calcomanía, coloque de forma alineada el borde derecho a la *d* del *1 – *If equipped* (Si está equipado), en la esquina inferior-derecha de la página 2. La calcomanía debe alinearse como se muestra.

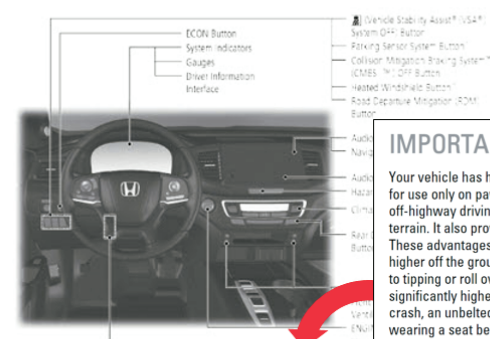
Calcomanía de “IMPORTANT HANDLING INFORMATION” (INFORMACIÓN IMPORTANTE PARA LA MANIPULACIÓN)

IMPORTANT HANDLING INFORMATION

Your vehicle has higher ground clearance than a passenger vehicle designed for use only on pavement. Higher ground clearance has many advantages for off-highway driving. It allows you to travel over bumps, obstacles, and rough terrain. It also provides good visibility so you can anticipate problems earlier. These advantages come at some cost. Because your vehicle is taller and rides higher off the ground, it has a higher center gravity making it more susceptible to tipping or roll over if you make abrupt turns. Utility vehicles have a significantly higher rollover rate than other types of vehicles. In a rollover crash, an unbelted person is significantly more likely to die than a person wearing a seat belt. As a reminder, make sure you and your passengers always wear seat belts.

VISUAL INDEX

Dashboard and Nearby Controls




SAFETY INFORMATION

IMPORTANT HANDLING INFORMATION

Your vehicle has higher ground clearance than a passenger vehicle designed for use only on pavement. Higher ground clearance has many advantages for off-highway driving. It allows you to travel over bumps, obstacles, and rough terrain. It also provides good visibility so you can anticipate problems earlier. These advantages come at some cost. Because your vehicle is taller and rides higher off the ground, it has a higher center gravity making it more susceptible to tipping or roll over if you make abrupt turns. Utility vehicles have a significantly higher rollover rate than other types of vehicles. In a rollover crash, an unbelted person is significantly more likely to die than a person wearing a seat belt. As a reminder, make sure you and your passengers always wear seat belts.

Centre en el espacio en blanco

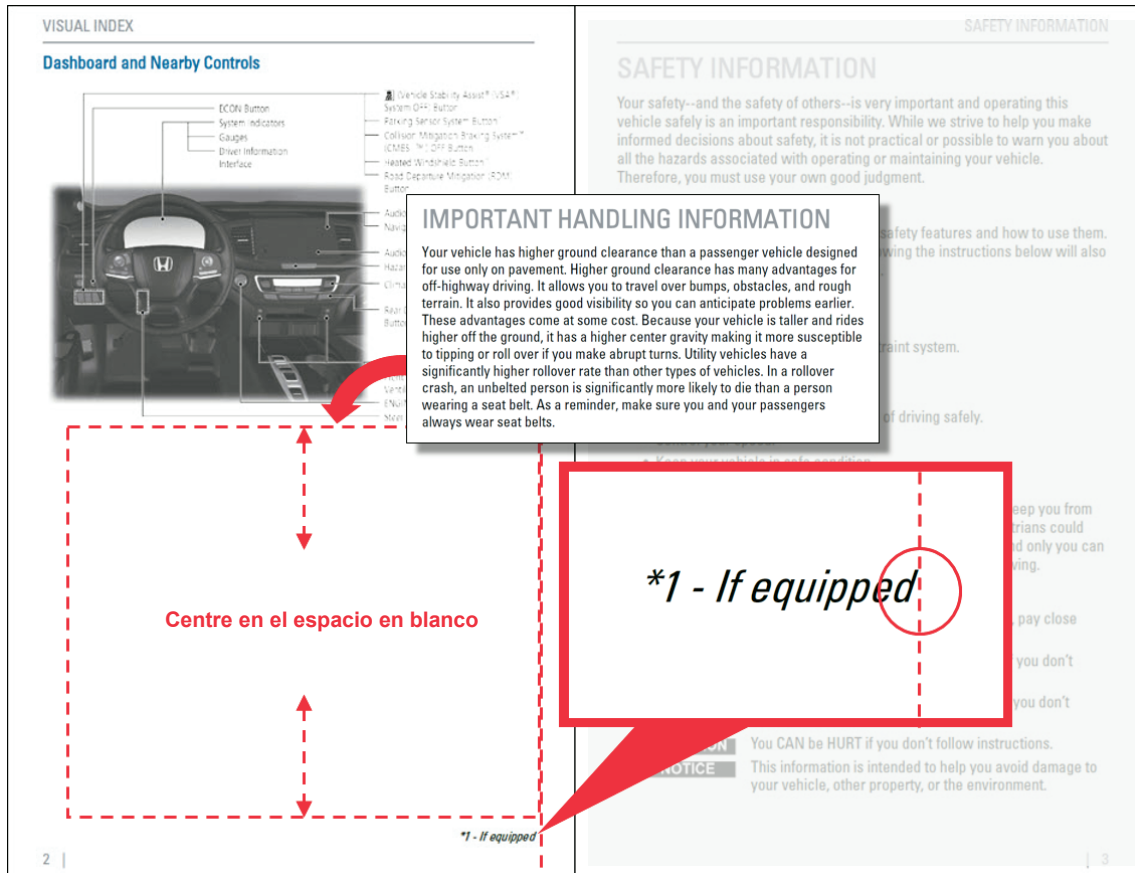


***1 - If equipped**

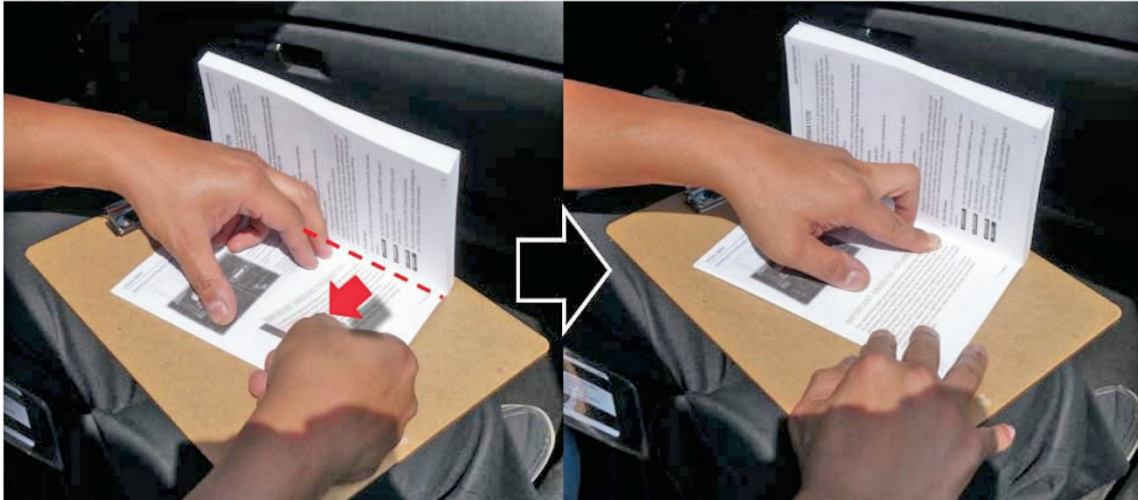
5. **Adjunte la calcomanía.** Despegue la cinta adhesiva de la calcomanía y adjunte el borde derecho de la calcomanía junto a la *d* del *1 – *If equipped*.

NOTA


Está bien tocar el lado de la cinta adhesiva de la calcomanía, si es necesario.



6. Usando presión uniforme, lentamente adjunte la calcomanía, desde el borde interior de la página al exterior. Cuidadosamente evite formar burbujas debajo de la calcomanía o pliegues en la calcomanía y la página.



La página actualizada debe verse como se muestra.

<p style="text-align: center; font-weight: bold; font-size: small;">VISUAL INDEX</p> <p style="font-weight: bold; color: #0056b3;">Dashboard and Nearby Controls</p> <div style="display: flex; align-items: center;">  <ul style="list-style-type: none"> ECO Button System Indicators Gauges Driver Information Interface Vehicle Stability Assist¹ (VSA¹) Brake-By-Wire Button Collision Mitigation Braking System¹ ICMBS¹ OFF Button Heated Windshield Button Road Departure Mitigation (RDM) Button Audio System Navigation System¹ Audio Information Screen Hazard Warning Button Climate Control System Rear Package Heated Door Mirror Button Front Seat Heater Buttons Front Seat Heaters and Seat Ventilation Buttons ENGINE START/STOP Button Steering Wheel Adjustments </div> <p style="font-weight: bold; color: #0056b3; margin-top: 20px;">IMPORTANT HANDLING INFORMATION</p> <p style="font-size: x-small;">Your vehicle has higher ground clearance than a passenger vehicle designed for use only on pavement. Higher ground clearance has many advantages for off-highway driving. It allows you to travel over bumps, obstacles, and rough terrain. It also provides good visibility so you can anticipate problems earlier. These advantages come at some cost. Because your vehicle is taller and rides higher off the ground, it has a higher center gravity making it more susceptible to tipping or roll over if you make abrupt turns. Utility vehicles have a significantly higher rollover rate than other types of vehicles. In a rollover crash, an unbelted person is significantly more likely to die than a person wearing a seat belt. As a reminder, make sure you and your passengers always wear seat belts.</p> <p style="text-align: right; font-size: x-small; margin-top: 10px;">*1 - If equipped</p> <p style="text-align: left; font-size: x-small; margin-top: 10px;">2 </p>	<p style="text-align: right; font-weight: bold; font-size: small;">SAFETY INFORMATION</p> <p style="font-weight: bold; color: #0056b3; margin-top: 20px;">SAFETY INFORMATION</p> <p style="font-size: x-small;">Your safety--and the safety of others--is very important and operating this vehicle safely is an important responsibility. While we strive to help you make informed decisions about safety, it is not practical or possible to warn you about all the hazards associated with operating or maintaining your vehicle. Therefore, you must use your own good judgment.</p> <p style="color: #0056b3; font-weight: bold; font-size: x-small;">Important Safety Information</p> <p style="font-size: x-small;">This guide explains many of your vehicle's safety features and how to use them. Please read this information carefully. Following the instructions below will also help to keep you and your passengers safe.</p> <ul style="list-style-type: none"> <li style="margin-bottom: 5px;">■ Important Safety Precautions <ul style="list-style-type: none"> • Always wear your seat belt. • Secure all children in the proper restraint system. • Be aware of airbag hazards. • Don't drink and drive. • Pay appropriate attention to the task of driving safely. • Control your speed. • Keep your vehicle in safe condition. • Do not leave children unattended in the vehicle. <li style="margin-bottom: 5px;">■ Safety Messages <p style="font-size: x-small;">When you see the following messages throughout this guide, pay close attention.</p> <ul style="list-style-type: none"> ⚠ DANGER You WILL be KILLED or SERIOUSLY HURT if you don't follow instructions. ⚠ WARNING You CAN be KILLED or SERIOUSLY HURT if you don't follow instructions. ⚠ CAUTION You CAN be HURT if you don't follow instructions. ⚠ NOTICE This information is intended to help you avoid damage to your vehicle, other property, or the environment. <p style="text-align: right; font-size: x-small; margin-top: 10px;"> 3</p>
--	--

7. Inserte la guía del propietario en el *Juego de Información del Propietario* y regrese el juego a la guantera.