

**** SOLUTION ****

Title Importing A Template Into Premium Tech Tool (PTT) For Sensor And Parameter Values Recordings; eService Request For Data - **US10+OBD13 And Newer Emissions (Vehicles With A Sixteen Pin Diagnostic Connector)**

Mack Models

Mack Model LEU , LR , MRU - TerraPro , TE - TerraPro , AN - Anthem , CHU - Pinnacle, Axle back , CXU - Pinnacle, Axle front , GR - Granite , GU - Granite , PI - Pinnacle , TD - Titan

Volvo Models

Volvo Model VNL , VNM , VNR , VNX , VAH , VHD

Emission Standard

Emission Standard US10+OBD13 , US14 , US14+OBD15 , US14+OBD16 , US17 , US17+OBD16 , US17+OBD18

Engine family

Engine family 11L Engine , 13L Engine , 16L Engine , MP7 , MP8 , MP10

**** SOLUTION ****

Cause Steps to import a template for operation ID: 1700-08-03-06, Sensor And Parameter Values, Monitoring. Only valid for OBD13 (OBDII) and newer vehicles

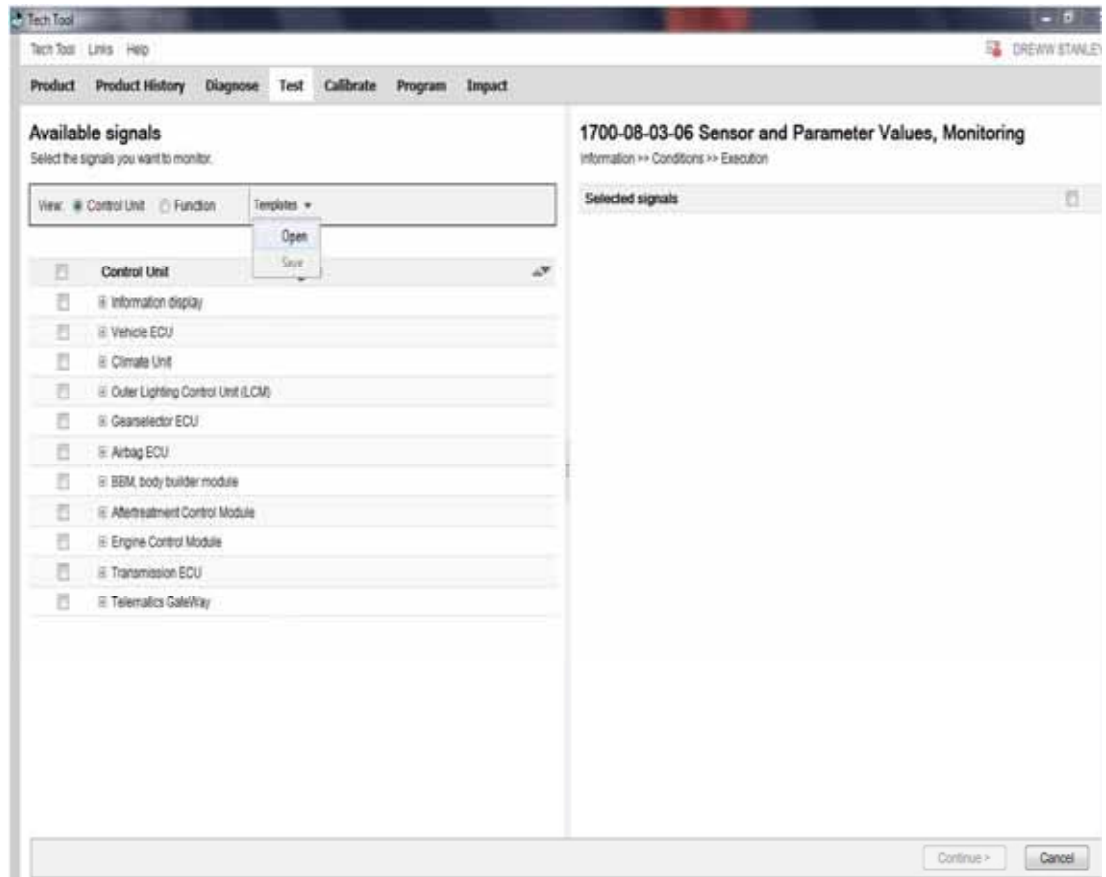
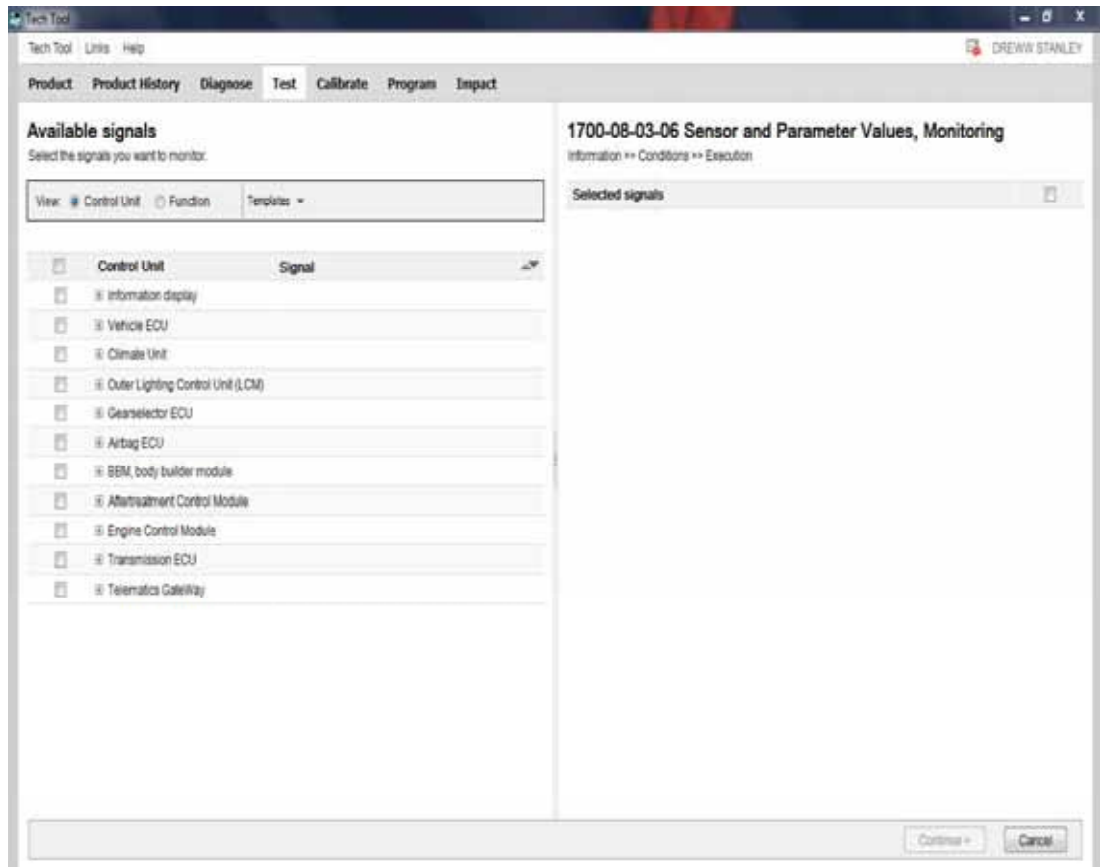
Solution **Begin by down loading the applicable template for the chassis from the CBR solutions below.**

For US10+OBD13 - US14+OBD16 chassis refer to section I in CBR solution [K25801413](#).

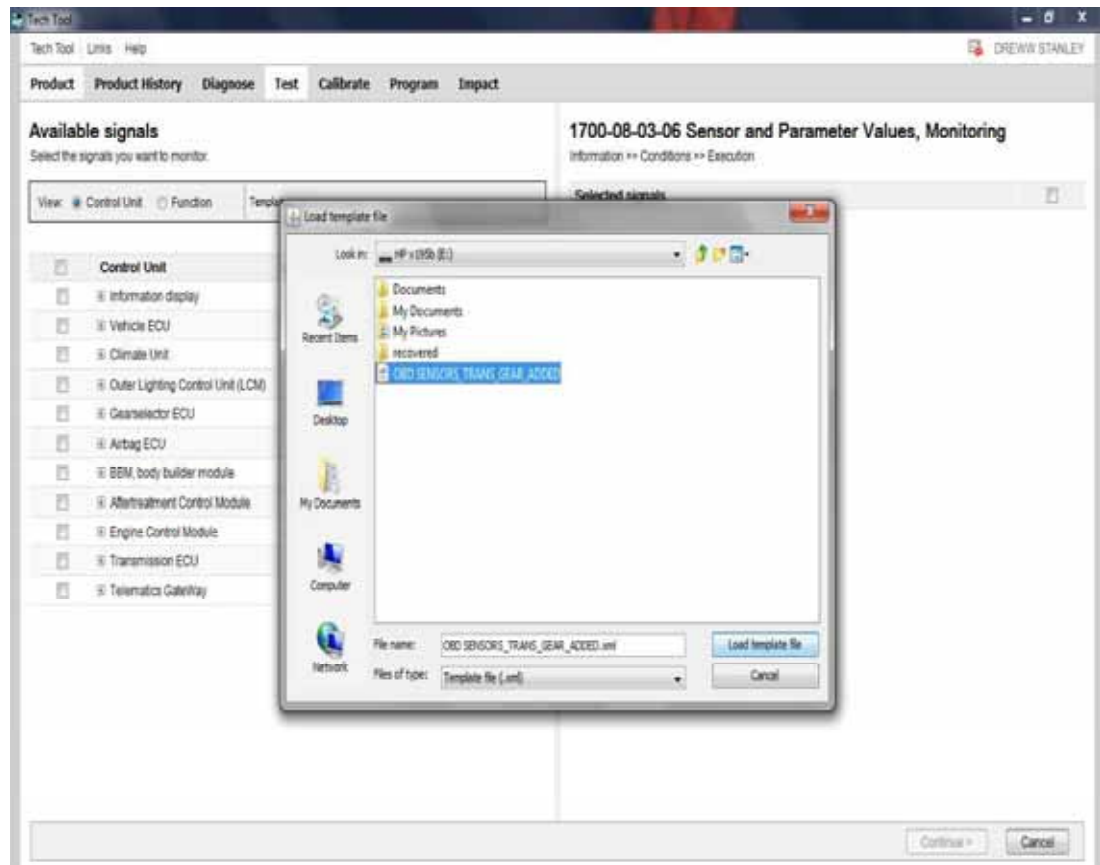
For US17+OBD16 - Current chassis refer to section I in CBR solution [K65352154](#).

To Import the Template, go to the Test tab and run Operation [17000803 06, Sensor and Parameter Values, Monitoring](#).

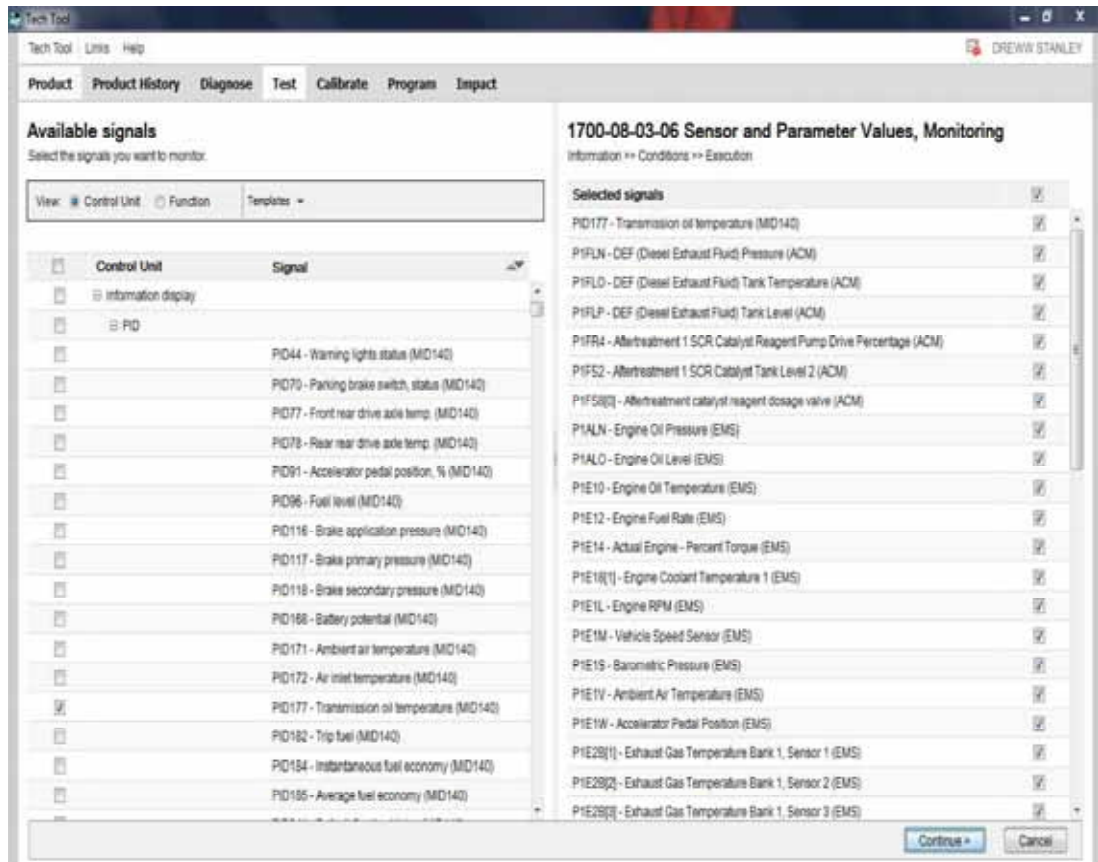
1. From the "Available Signals" screen, select Templates and then "Open"



2. After selecting Open, navigate to the folder where OBD_SENSORS_TRANS_GEAR_ADDED.xml is saved. Select the template, then click Load Template File.



3. After loading the template file the parameters to be selected will be on the right hand portion of the screen.



4. Click continue and proceed to record data as normal.

5. Instructions for extracting the sensor monitoring data can be found in CBR solution [K3922788](#)
8.

Solution visibility	Dealer distribution
Function(s)/component(s) affected	
Function affected	Diagnostic tool , Documentation
Function Group	
Function Group	170 General - Programming, Data Monitor, Vehicle Information
Customer effect	
Main customer effect	regeneration , road behaviour , diagnostics/methodology
Conditions	
Vehicle operating mode	when driving , when stationary
Administration	
Author	A241298
Last modified by	RU4469V
Creation date	07-12-2016 17:12
Date of last update	16-10-2019 16:10
Review date	01-01-2020 00:01

UNCONTROLLED COPY. Printed document is for temporary use only and should not be retained.