

Tail Lights Brake Lamp Electrical Rework

Description:

This procedure is for changing the functionality of the tail lights in the J4500 coaches, such that it abides by the New Jersey Administrative Code Section 16:53-3.30, which requires the stop lights to be “separate and independent” of all other rear lights on the coach.

This rework can be used for J4500 coaches MY2013.and onward

WARNING

Read this entire procedure before beginning work.

Use Safe Shop Practices at All Times.

To avoid personal injury:

- a. Proper Personal Protective Equipment (PPE) must be worn. Safety glasses and protective gloves are required for working with DEF Fluid.*
- b. Turn the main battery disconnect switch to the OFF position.*
- c. Ensure that both the front and the rear wheels are chocked.*
- d. Positioning the ENGINE RUN and ENGINE START switches on the engine compartment remote control box to the OFF position.*
- e. Allow enough time for components to cool down prior to working in the engine compartment.*

1.0 Material requirements:

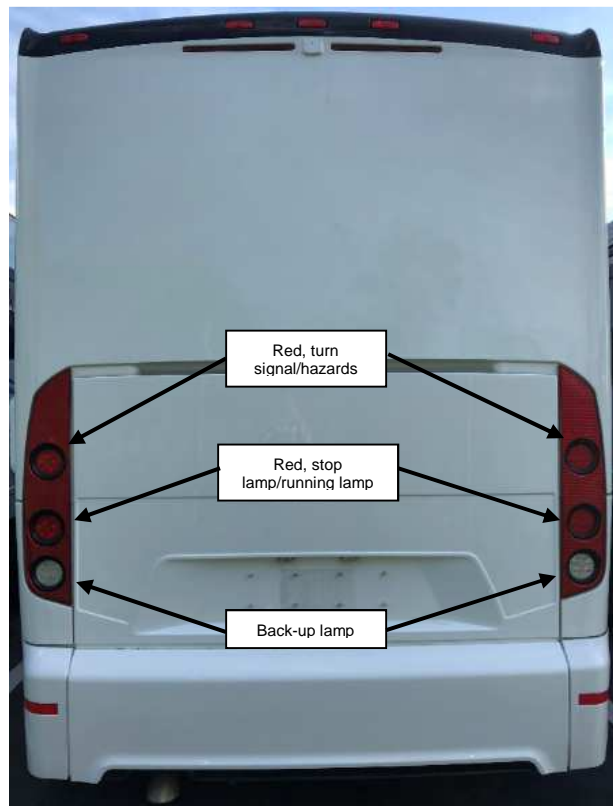
ITEM	PART NO	QTY	U/M	DESCRIPTION
1	T12-1216	2	EA	HARNESS – TAIL LT REWORK JMPR
2	19-11-258	4	EA	Tyrap – 7.31” LG

2.0 Special Tools:

No special tools are required.

3.0 Fit the new harnesses on both tail lights:

Locate the tail lamp assemblies at the rear of the coach. Visually check to ensure the lamps are red at the top and middle locations indicated as shown in the figure below.



Open the engine door.

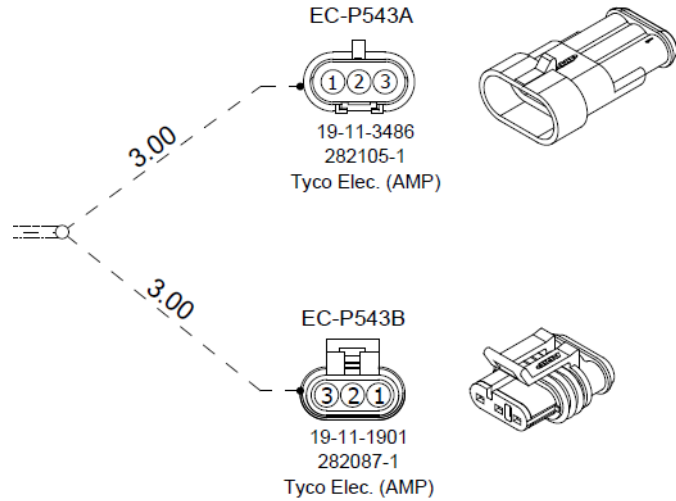


For the *Left-Hand* Tail Lights:

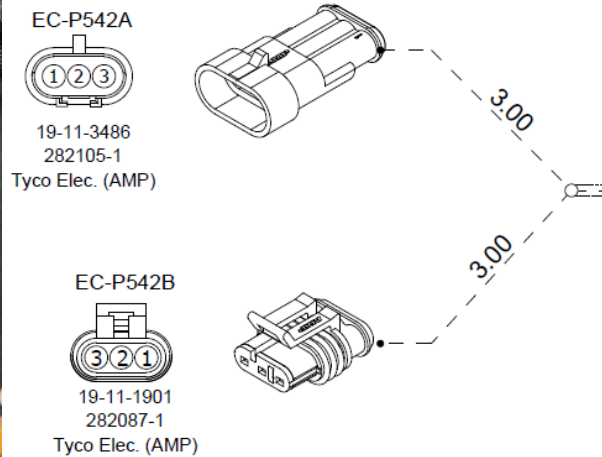
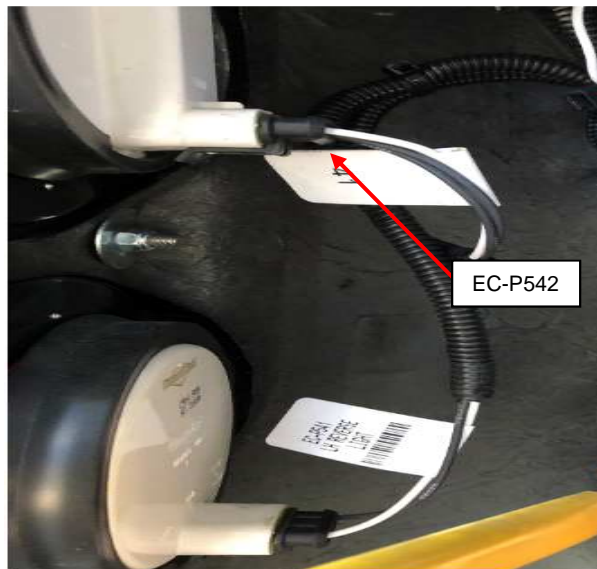
Disconnect the red tail-light connectors from the left-hand lamp assembly.



Connect the existing top harness male connector (EC-P543) to the female connector (EC-P453A) on the jumper harness (MCI P/N: T12-1216).
 Connect the male end of the jumper harness (EC-P453B) to the top tail light.



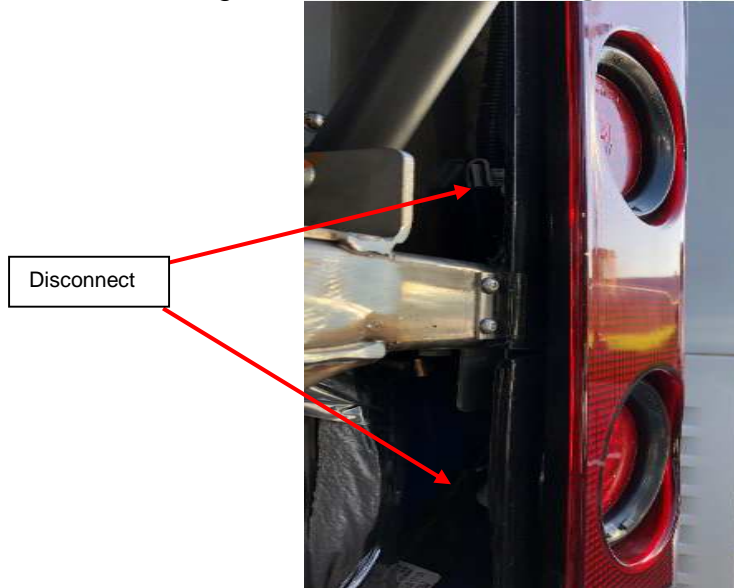
Run the jumper harness down and connect the existing middle harness male connector (EC-P542) to the female connector (EC-P452A) on the jumper harness.
 Connect the male end of the jumper (EC-P452B) to the middle tail light.



Using two zip ties (MCI P/N: 19-11-258), secure the harnesses for cable management as needed.

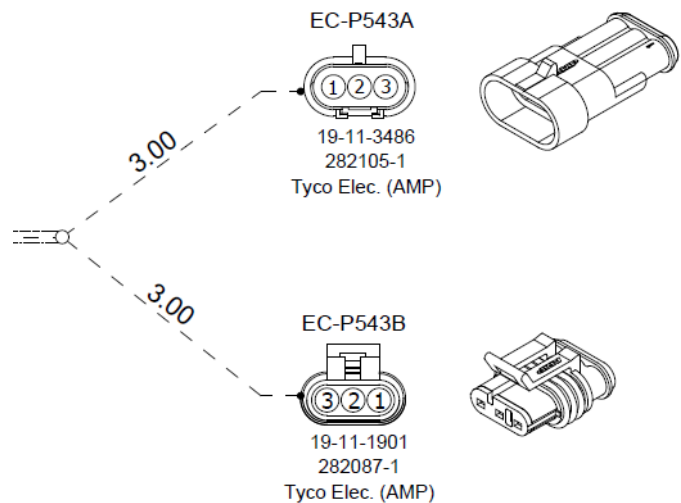
For the *Right-Hand Tail Lights*:

Disconnect the red tail-light connectors from the right-hand lamp assembly.



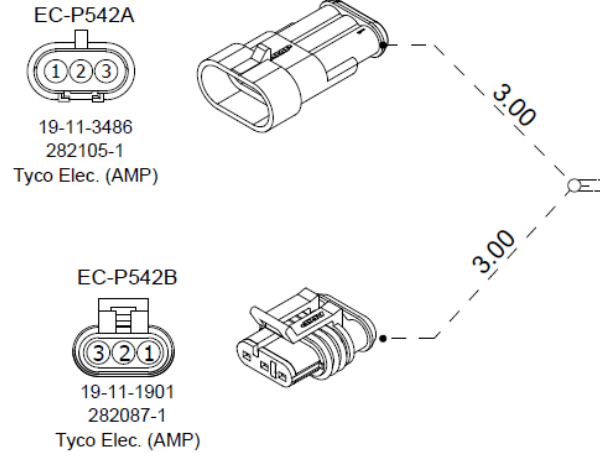
Connect the existing top harness male connector (EC-P540) to the female connector (EC-P543A) on the second jumper harness (P/N: T12-1216).

Connect the male end of the jumper harness (EC-P543B) to the top tail light.



Run the jumper harness down and connect the existing middle harness male connector (EC-P539) to the female connector (EC-P542A) on the same jumper harness.

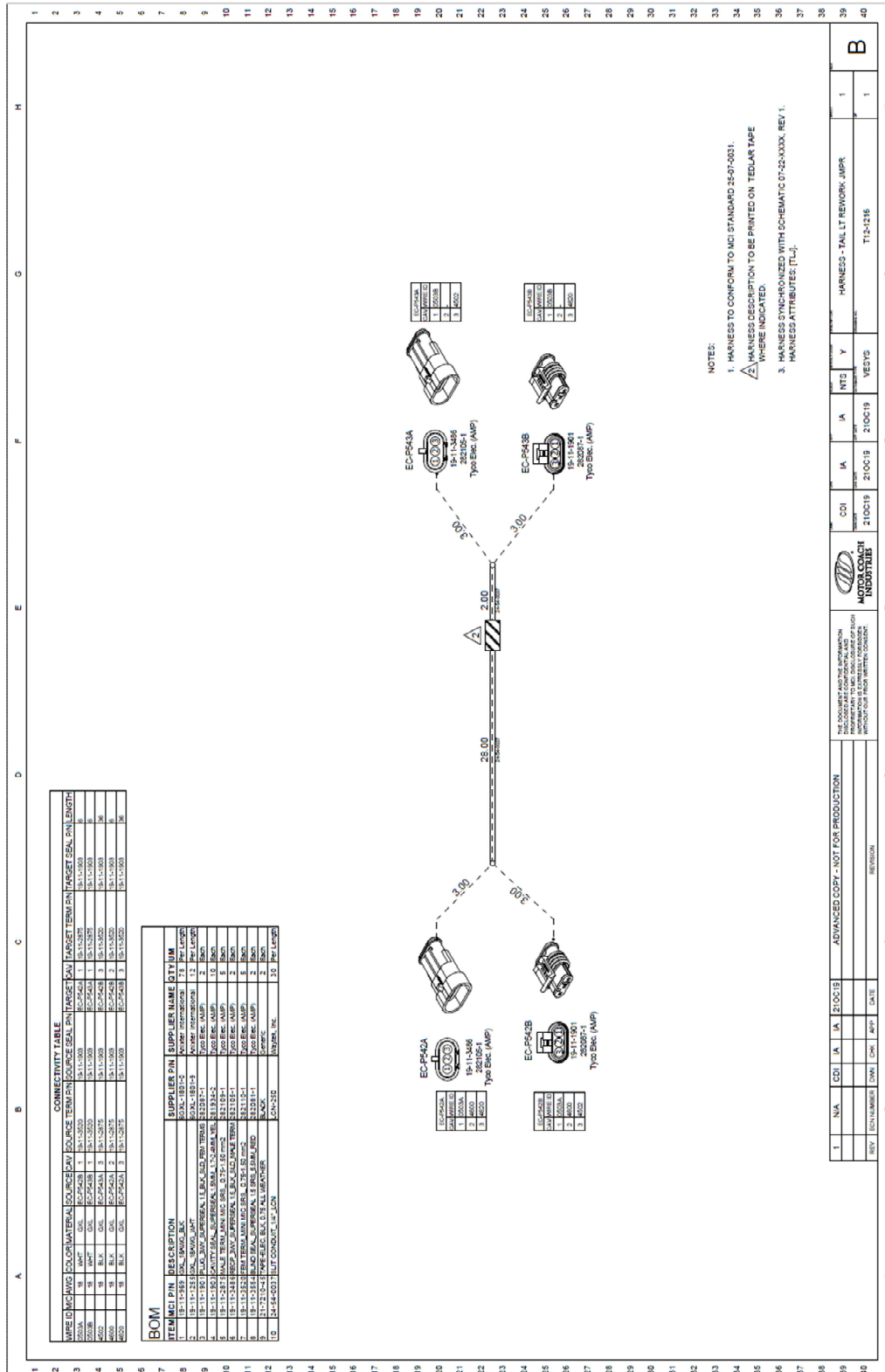
Connect the male end of the jumper (EC-P542B) to the middle tail light.



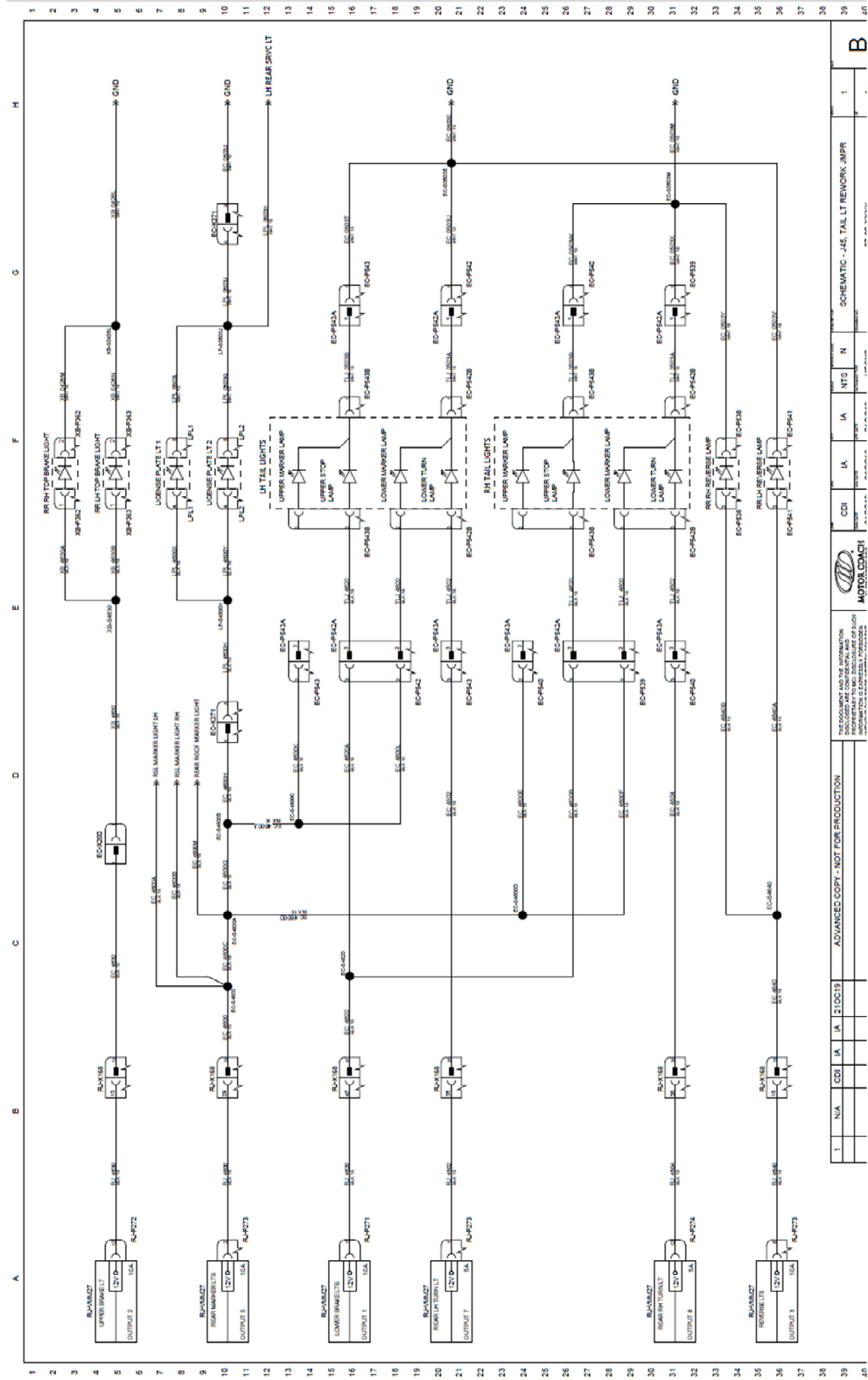
Using two zip ties (MCI P/N: 19-11-258), secure the harnesses for cable management as needed and close the engine door.

4.0 Appendix:

Harness drawing:



Schematic drawing:



End of the procedure

1	N/A	CDI	IA	IA	NTS	N	1	1
<p>ADVANCED COPY - NOT FOR PRODUCTION</p> <p>THE DOCUMENT AND THE INFORMATION CONTAINED HEREIN ARE UNCLASSIFIED EXCEPT WHERE SHOWN OTHERWISE.</p> <p>DATE OF REVIEW: 03/15/2019</p>								
<p>SCHEMATIC - JAS TAIL LT NETWORK_INPR</p>								