



Reliability **DRIVEN**[™]

Service Bulletin No. 3123

MODEL: J series	TYPE: Service Information	SECTION/GROUP: 03-Body	DATE: 10/30/19
SUBJECT: Insulating the gap in the floor under the dash area			
CONDITIONS: Service Information Only			

Description:

This procedure outlines the steps to insulate the gap in the area between the front cap and under the dash panel on the driver's side. This will help shield the ambient temperature sensor (located in the spare tire compartment) from the air circulating inside the coach.

This procedure applies to all MY 2018, 2019 and 2020 J coaches up to VIN: 69659 (J4500) and VIN: 21036 (J3500).



Read this entire procedure before beginning work.

Use Safe Shop Practices At All Times.

To avoid personal injury:

- a. **Proper Personal Protective Equipment (PPE) must be worn. Safety glasses and protective gloves are required for working with DEF Fluid.**
- b. **Turn the main battery disconnect switch to the OFF position.**
- c. **Ensure that both the front and the rear wheels are chocked.**
- d. **Position the ENGINE RUN and ENGINE START switches on the engine compartment remote control box to the OFF position.**
- e. **Allow enough time for components to cool down prior to working in the engine compartment**

1.0 Material requirements

No material required.

2.0 Special Tools

White Lightning® WL1111100 Stop Gap minimal expanding foam.

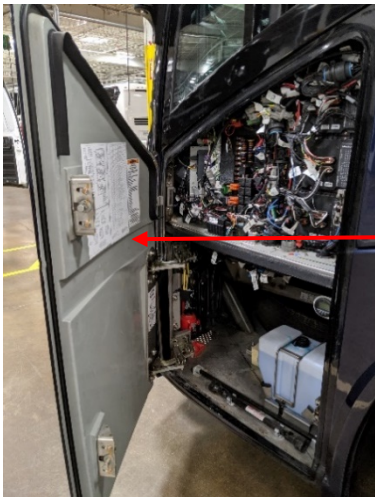


3.0 Applying insulation foam

Open the front junction box door by pulling the lever on the driver's left-hand console.

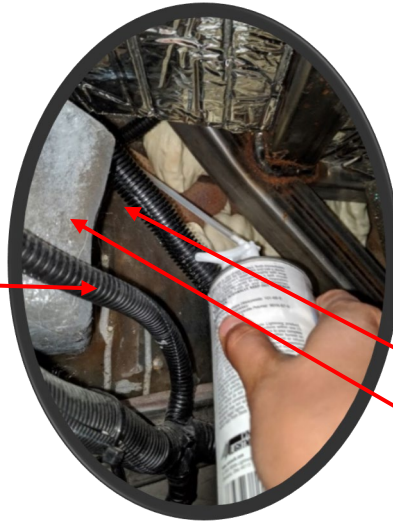
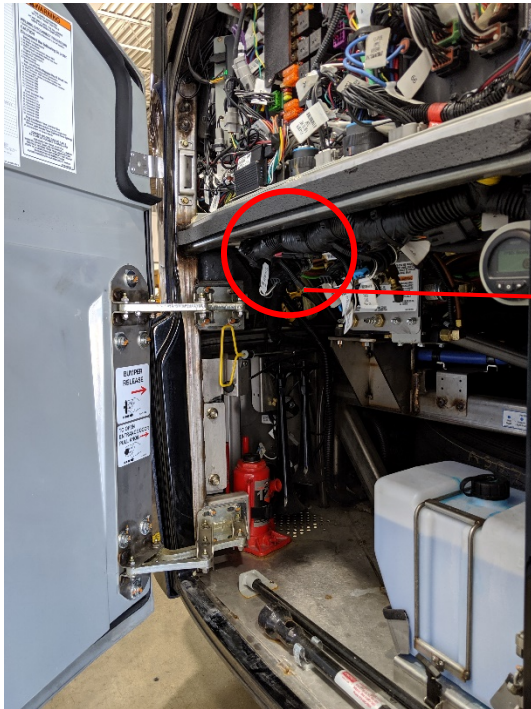


Pull the lever to
open Front Junction
Box door



Opened Front
Junction Box door

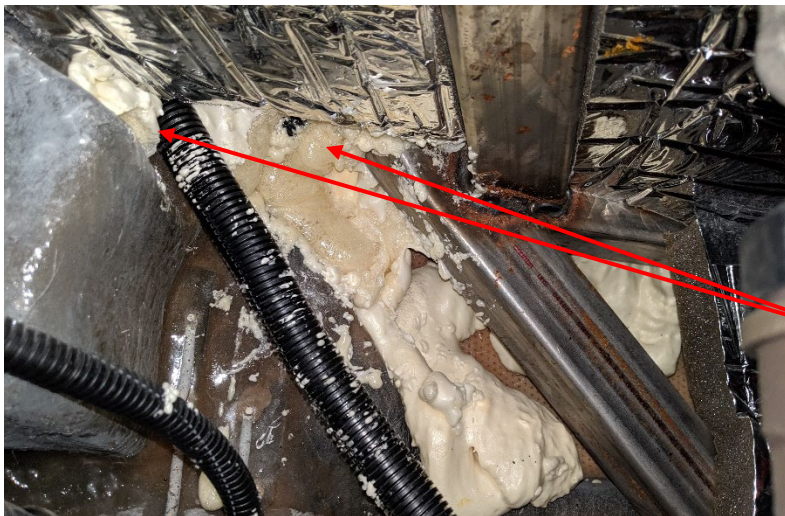
Spray the insulation foam under the driver's floor near the head-light.



Un-insulated area

Head-light bucket

Spray the insulation foam until the gap is sealed. Wipe off any excess.



Newly sprayed insulation

Close the front junction box.

Let the insulation cure for 8 hours.

End of the Procedure