

**Title:** BL1065 Software Release

**Applicability:** Model Year 18 Revero

**Market Region:** All

**PURPOSE:** This document will be used as a reference guide for technicians to update a vehicle to Baseline 1065 (BL1065) software.  
If the vehicle is below Baseline 1064, please update as indicated by the 1064 bulletin (CC-19-00-01)

Software updates will be scheduled as part of Karma Automotive continuous improvement process. The relevant software flash reprogramming is performed via Karma Sync to update without module replacement.

The Karma Sync tool will allow the technician to display the current software identification and cross reference them to any that will be included in the latest updates.  
Central Infotainment Unit flashing will occur over the air, TSS is required to be notified prior to this step.

**REQUIREMENT:** There is a component of this Baseline release which will be performed Over-the-Air. This will require creating a technical services support (TSS) case as soon as the vehicle arrives at the dealer. Please schedule this baseline install and begin the action early in the workday to allow sufficient time to contact and activate this over the air update through the TSS group.

**⚠ NOTICE! ⚠**

*The vehicle should have the High Voltage battery charged. If the State of Charge is 15% or less (verified in Karma Sync), when placed in Ready Mode, the vehicle generator may turn on at any time during the flash process. Therefore we recommend the state of charge is **25% or greater before beginning the flash procedure, or five (5) miles of EV range.***

**⚠ NOTICE! ⚠**

*Have a 12V power supply available to use on every Revero during flashing of modules, there are no exceptions to this. Vehicle 12V battery voltage must be maintained greater than 12.5V while flashing the control modules.*

**Title: BL1065 Software Release**

**Applicability:** Model Year 18 Revero

**Market Region:** All

Prepare the vehicle for updates:

Unlock and enter vehicle

1. Switch the car to Accessory Mode- press the power button
2. Plug in the KarmaSync tool
3. Launch KarmaSync
4. Make sure that KarmaSync is in active state, for that: Read DTCs
5. Once the DTCs are read, clear if required, transition into System Ready (Power on)
6. Wait for one (1) minute after transitioning into System Ready (This is for the car to detect that there is a KarmaSync tool present)
7. Proceed with the rest of the bulletin
8. While the ECUs are being updated during the flashing process, make sure the car doesn't go to sleep between module flashing transitions (after the 60 second wait during the update process, transition into ACC mode when prompted by KarmaSync)

Open a TSS case as normal follow provided instructions.

Verify current installed version of software in the TPI.

Settings >Vehicle > About

***If it reads 18.19.79.2 , 18.19.79.3, 18.19.79.4 do not proceed, this vehicle is updated to BL1065***

***Verify with TSS how to go forward***

The chart below should guide you to view the Baseline level of the vehicle.

Settings >Vehicle > About	Displayed Version
BL 1021	17.11.16.2
BL 1022	17.12.29.4
BL 1030	17.13.27.3
BL 1035	17.13.27.4
BL 1040	17.15.42.3
BL 1050	17.16.47.3
BL 1061	17.17.60.4
BL 1062	17.17.62.3
BL 1064	18.19.76.4
BL 1065	18.19.79.3

Karma Automotive Bulletins and service documents are intended for use by experienced and trained Technicians. If you lack the skills, tools, equipment and a suitable workshop for any procedure described in this document, we suggest you leave such repairs to a Karma retailer and service provider. See your service provider for advice on whether your vehicle may benefit from the information contained within this document. The information contained in the Karma Bulletin is accurate at the date of publication. However, Karma Automotive regularly updates technical information. Please check with your Karma Automotive Retailer and Karma Automotive service provider that the bulletin you intend to use contains the latest available information.

Title: BL1065 Software Release

Applicability: Model Year 18 Revero

Market Region: All

**Note:** Remove the Karma Sync Equipment. Before the CIU is updated ensure nothing is plugged into the OBD II port. This includes the MDI - remove this, otherwise the TPI will cycle on and off, this is expected behavior. However, this will interrupt the update. The Karma Sync is also not needed for this over the air (OTA) update.

**STEP 1**

Check for any open bulletins  
which require completion

**STEP 2**

Read this BL1065 bulletin



**STEP 3**

Create TSS case,  
Now Over-the-air Update  
can be sent to vehicle



**STEP 4**

Follow Instructions  
provided by TSS to update  
vehicle with Karma Sync

**⚠ NOTICE! ⚠**

**STEPS MUST BE PERFORMED IN THIS ORDER TO AVOID SOFTWARE INSTALLATION ISSUES**

Karma Automotive Bulletins and service documents are intended for use by experienced and trained Technicians. If you lack the skills, tools, equipment and a suitable workshop for any procedure described in this document, we suggest you leave such repairs to a Karma retailer and service provider. See your service provider for advice on whether your vehicle may benefit from the information contained within this document. The information contained in the Karma Bulletin is accurate at the date of publication. However, Karma Automotive regularly updates technical information. Please check with your Karma Automotive Retailer and Karma Automotive service provider that the bulletin you intend to use contains the latest available information.

**Title: BL1065 Software Release****Applicability:** Model Year 18 Revero**Market Region:** All**Overview:**

## CHECK FOR OPEN BULLETINS:

1. Perform all required action as per bulletins, and verify all available bulletins have been performed: TB-18-12-02 (Intake Plumbing Inspection), CC-18-12-01(Oil Change), CC-18-30-01 (A/C Line Inspection), TB-19-90-01 (Key Fob Trim Shim) etc. - **Contact TSS when complete**

USB MAP FILES UPDATE this is required for any vehicle not at BL1050- this is required to update to BL1064 and 1065.)



fig. 1a

2. Insert the supplied USB stick (fig.1a) into the center console USB PORT. This will begin the on board navigation map files upload. This should take approximately 45 minutes to one hour. Remove the USB stick when the TPI displays the "update is verified". Install will follow automatically. Leave the vehicle in ready mode during this time.
3. Place the vehicle in a safe area with good cell reception and place vehicle in Ready Mode. TSS will contact you within the hour, the OTA will happen as the USB is uploading to maximize the use of your time.
4. The TSS representative will instruct you to power down the vehicle.
5. An update screen will appear.
6. Accept the install, follow prompts to install the new BL1065 update.
7. Contact your TSS representative again to confirm step one of the over-the-air software update.
8. Follow the TSS representative's instructions.
9. Verify the software in the vehicle TPI again (18.19.79.3 should display, when performed over the air)

**KARMA SYNC:**

10. Proceed to update Karma Sync as per this bulletin (this only needs to happen once per service laptop, not for every update)
11. Complete procedure as directed in this bulletin and by your TSS representative

Karma Automotive Bulletins and service documents are intended for use by experienced and trained Technicians. If you lack the skills, tools, equipment and a suitable workshop for any procedure described in this document, we suggest you leave such repairs to a Karma retailer and service provider. See your service provider for advice on whether your vehicle may benefit from the information contained within this document. The information contained in the Karma Bulletin is accurate at the date of publication. However, Karma Automotive regularly updates technical information. Please check with your Karma Automotive Retailer and Karma Automotive service provider that the bulletin you intend to use contains the latest available information.

**Title: BL1065 Software Release**

**Applicability:** Model Year 18 Revero

**Market Region:** All

**VERIFY THE CORRECT MAP DATA IS INSTALLED.**

As shown below (fig.1b)

Navigation “1.0.0.772 MAP 201706\_TA\_NA\_0001”



fig. 1b

Karma Automotive Bulletins and service documents are intended for use by experienced and trained Technicians. If you lack the skills, tools, equipment and a suitable workshop for any procedure described in this document, we suggest you leave such repairs to a Karma retailer and service provider. See your service provider for advice on whether your vehicle may benefit from the information contained within this document. The information contained in the Karma Bulletin is accurate at the date of publication. However, Karma Automotive regularly updates technical information. Please check with your Karma Automotive Retailer and Karma Automotive service provider that the bulletin you intend to use contains the latest available information.

Title: BL1065 Software Release

Applicability: Model Year 18 Revero

Market Region: All

**NOTE:**  
**VERIFY THE VIN- the operations and time required vary per VIN list this will affect the warranty claim.**

**NOTE:** The vehicles listed below require a full update from a baseline at BL1063 or earlier. These require a specific operation code as shown below, and at the end of the bulletin. **If it is not listed** an OTA update is all that is required, follow the vehicle prompts.

50GK41SA9JA000005	50GK41SA7JA000147
50GK41SA0JA000006	50GK41SA0JA000166
50GK41SA8JA000013	50GK41SA4JA000171
50GK41SA5JA000017	50GK41SAXJA000174
50GK41SA7JA000021	50GK41SA6JA000186
50GK41SA6JA000026	50GK41SA2JA000203
50GK41SA5JA000034	50GK41SA4JA000204
50GK41SA0JA000040	50GK41SA8JA000223
50GK41SA2JA000055	50GK41SA2JA000251
50GK41SA9JA000070	
50GK41SA0JA000071	
50GK41SA5JA000079	
50GK41SA7JA000102	
50GK41SA8JA000108	
50GK41SA0JA000118	
50GK41SA1JA000144	

CODE	DESCRIPTION	TIME	DEFECT CODE
00-99-24-65	Older BL to BL1065 Update	2.0	99-20-20-68

Any vehicle not on the provided list will receive an over-the-air update only. See the end of bulletin for applicable labor time

Karma Automotive Bulletins and service documents are intended for use by experienced and trained Technicians. If you lack the skills, tools, equipment and a suitable workshop for any procedure described in this document, we suggest you leave such repairs to a Karma retailer and service provider. See your service provider for advice on whether your vehicle may benefit from the information contained within this document. The information contained in the Karma Bulletin is accurate at the date of publication. However, Karma Automotive regularly updates technical information. Please check with your Karma Automotive Retailer and Karma Automotive service provider that the bulletin you intend to use contains the latest available information.

**Title:** BL1065 Software Release

**Applicability:** Model Year 18 Revero

**Market Region:** All

**⚠ WARNING!**

**DO NOT ALLOW LAPTOP TO GO INTO SLEEP OR SCREEN SAVER MODE DURING THIS PROCESS. TURN OFF SCREEN SAVER IF NECESSARY AND ENSURE THE LAPTOP STAYS AWAKE. THE LAPTOP MUST BE PLUGGED INTO A STABLE POWER SOURCE DURING THE PROCESS. IF THE VEHICLE GOES INTO SLEEP MODE WHILE AN ECU IS BEING PROGRAMMED; THE REPROGRAMMING MAY BE UNSUCCESSFUL AND MAY CAUSE DAMAGE TO THE ECU.**

All Vehicles in the field will be brought up to the latest release level of "BL1065."

BL1065 updates provide the following:

**BECM:** Internal processes for charging and power behaviors refined

**CIU/ DIS:** Performance enhancements.

**HCU:** Enhanced and refined logic introduced

**Inverters:** Inverter Software has introduced further functional optimization.

**Title:** BL1065 Software Release

**Applicability:** Model Year 18 Revero

**Market Region:** All

The target software should be as indicated in the table below.

Record the software IDs displayed on the Karma Sync workshop tester before you begin.

Control Module Name	Software Version ID after BL1065 update (In Yellow have been updated)	Software ID as received before Update (enter ID displayed on scan tool below)
Advance Driver Assistance System (ADAS)	0381-00-47	
Battery Energy Control Module (BECM)	0156-04-72	
EBCM	0071-07-04	
Engine Control Module (ECM) (APP ID)	0121-09-06	
Engine Control Module (ECM) (Cal ID)	0127-09-09	
Central Infotainment Unit (CIU)	18.19.79.3	
Door Module Right	0431-00-24	
Door Module Left	0421-00-24	
Heat/Ventilation Air Conditioning (HVAC)	0162-02-51	
Hybrid Control Unit (HCU)	0111-0C-98	
Memory Seat Module (MSM)	0441-02-09	
Power Inverter Module for Generator	0301-06-43	
Power Inverter Module for Traction (Motor 1)	0281-06-55	
Power Inverter Module for Traction (Motor 2)	0291-06-55	
Tire Pressure Monitor System	0371-00-03	
Vehicle Control Module - Body (VCM-B)	0401-00-29	
Vehicle Control Module - Security (VCM-S)	0411-01-23	

**NOTE:** The CIU software version ID is found in the TPI, go to: Settings > Vehicle > About

Karma Automotive Bulletins and service documents are intended for use by experienced and trained Technicians. If you lack the skills, tools, equipment and a suitable workshop for any procedure described in this document, we suggest you leave such repairs to a Karma retailer and service provider. See your service provider for advice on whether your vehicle may benefit from the information contained within this document. The information contained in the Karma Bulletin is accurate at the date of publication. However, Karma Automotive regularly updates technical information. Please check with your Karma Automotive Retailer and Karma Automotive service provider that the bulletin you intend to use contains the latest available information.

**Title:** BL1065 Software Release

**Applicability:** Model Year 18 Revero

**Market Region:** All

**NOTICE!**

**ANY DEVICE PLUGGED INTO SHOULD BE  
PROMPTLY REMOVED PRIOR TO PROCEEDING**



Karma Automotive Bulletins and service documents are intended for use by experienced and trained Technicians. If you lack the skills, tools, equipment and a suitable workshop for any procedure described in this document, we suggest you leave such repairs to a Karma retailer and service provider. See your service provider for advice on whether your vehicle may benefit from the information contained within this document. The information contained in the Karma Bulletin is accurate at the date of publication. However, Karma Automotive regularly updates technical information. Please check with your Karma Automotive Retailer and Karma Automotive service provider that the bulletin you intend to use contains the latest available information.

**Title: BL1065 Software Release****Applicability:** Model Year 18 Revero**Market Region:** All

1. **IF** the vehicle is not at BL1050 then at this time insert the supplied USB stick into the center console USB PORT. This will begin the on-board navigation map files upload. A message will appear on the TPI: "Please wait while update is extracted." (fig. 2a). This should take approximately 45 minutes to one hour. **SKIP THIS STEP IF THE MAP DATA IS VERIFIED from page 5 (Navigation 1.0.0.772 MAP 201706\_TA\_NA\_0001)**

Central Infotainment Unit flashing will occur over-the-air, **TSS is required to be notified prior** to this step. TSS will instruct you to place the vehicle in an suitable safe area with good cellular reception, and place in Ready Mode: the update packet is downloaded to the vehicle- the download requires no other action on the technician's part, only to leave the vehicle in a secure and safe location in your work area for approximately sixty (60) minutes. TSS representative will contact you within the hour.



fig. 2a



fig. 2b

Remove the USB stick when the TPI displays the "...update is verified" (fig. 2b).  
Install will follow automatically.

Karma Automotive Bulletins and service documents are intended for use by experienced and trained Technicians. If you lack the skills, tools, equipment and a suitable workshop for any procedure described in this document, we suggest you leave such repairs to a Karma retailer and service provider. See your service provider for advice on whether your vehicle may benefit from the information contained within this document. The information contained in the Karma Bulletin is accurate at the date of publication. However, Karma Automotive regularly updates technical information. Please check with your Karma Automotive Retailer and Karma Automotive service provider that the bulletin you intend to use contains the latest available information.

**Title: BL1065 Software Release****Applicability:** Model Year 18 Revero**Market Region:** All

2. Keep the door latched (closed position) the update will not show up on TPI until power button is powered off with door still latched. This is when you can verify the TPI for update available messaging screen. If the download completed, the vehicle will prompt to accept the **BL1065** update (fig. 3). Accept this and allow the vehicle to update. Note that changing the door latch state will interrupt the accessory delay and shut down the TPI. If the TPI shuts down at power off, the "update available" screen will not display.

Note: The message on the TPI may appear "Map data version is wrong..." this is expected and may be ignored at this time.

## BL1065 OTA accept screen

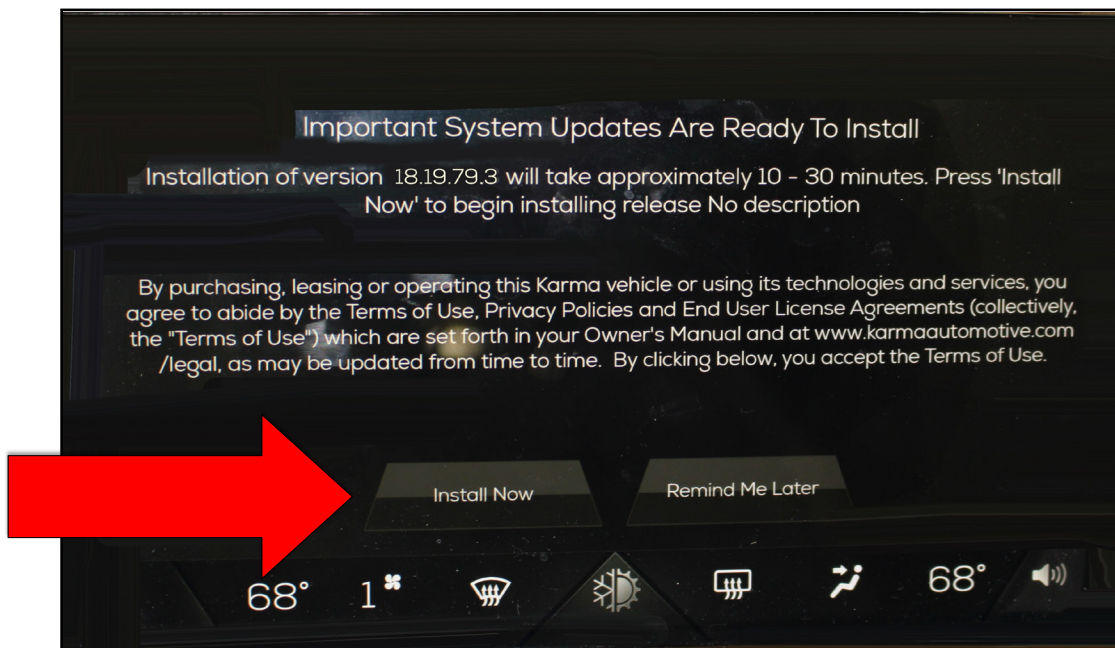


fig. 3

Karma Automotive Bulletins and service documents are intended for use by experienced and trained Technicians. If you lack the skills, tools, equipment and a suitable workshop for any procedure described in this document, we suggest you leave such repairs to a Karma retailer and service provider. See your service provider for advice on whether your vehicle may benefit from the information contained within this document. The information contained in the Karma Bulletin is accurate at the date of publication. However, Karma Automotive regularly updates technical information. Please check with your Karma Automotive Retailer and Karma Automotive service provider that the bulletin you intend to use contains the latest available information.

**Title:** BL1065 Software Release

**Applicability:** Model Year 18 Revero

**Market Region:** All

Below are the screens of the TPI read out as the CIU is updating (fig.4) When the update is complete, the screen may go blank or black or cycle on and off. Normal function will resume upon cycling the Start/Stop button.



fig. 4

Karma Automotive Bulletins and service documents are intended for use by experienced and trained Technicians. If you lack the skills, tools, equipment and a suitable workshop for any procedure described in this document, we suggest you leave such repairs to a Karma retailer and service provider. See your service provider for advice on whether your vehicle may benefit from the information contained within this document. The information contained in the Karma Bulletin is accurate at the date of publication. However, Karma Automotive regularly updates technical information. Please check with your Karma Automotive Retailer and Karma Automotive service provider that the bulletin you intend to use contains the latest available information.

**Title:** BL1065 Software Release

**Applicability:** Model Year 18 Revero

**Market Region:** All

3. Verify the CIU software ID in the TPI after the vehicle has been placed in ready mode. Go to Settings >Vehicle > About, the version should be displayed above the Terms and Conditions bar (fig. 5)



fig. 5

The CIU Software ID should be as displayed: 18.19.79.4

**Title: BL1065 Software Release****Applicability: Model Year 18 Revero****Market Region: All**

**NOTE:** The following KarmaSync update will only occur once per service laptop, in regards to this bulletin.  
**It will not be repeated after this first instance.**

4. Launch the Karma Sync application or close and relaunch if already open.  
Upon launch of the scan tool you may be prompted to enter user credentials.  
When a software update is available an update dialog box should appear with the new software package (fig.1). Configuration files version 1065.0.0 will load.

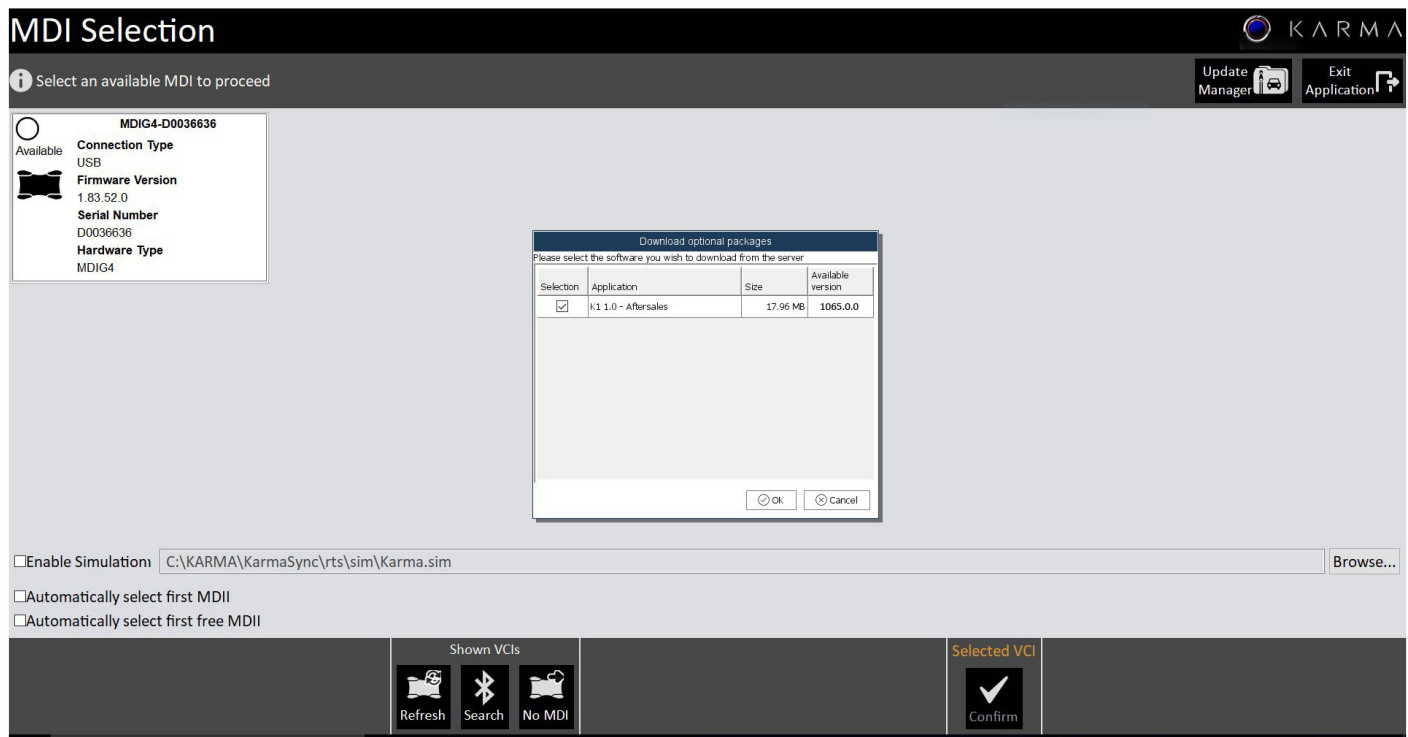


fig.5

5. Click "Ok" to install. (fig. 5)

Karma Automotive Bulletins and service documents are intended for use by experienced and trained Technicians. If you lack the skills, tools, equipment and a suitable workshop for any procedure described in this document, we suggest you leave such repairs to a Karma retailer and service provider. See your service provider for advice on whether your vehicle may benefit from the information contained within this document. The information contained in the Karma Bulletin is accurate at the date of publication. However, Karma Automotive regularly updates technical information. Please check with your Karma Automotive Retailer and Karma Automotive service provider that the bulletin you intend to use contains the latest available information.

**Title:** BL1065 Software Release

**Applicability:** Model Year 18 Revero

**Market Region:** All

- The package for 1065 will then download (**example** fig.8a).

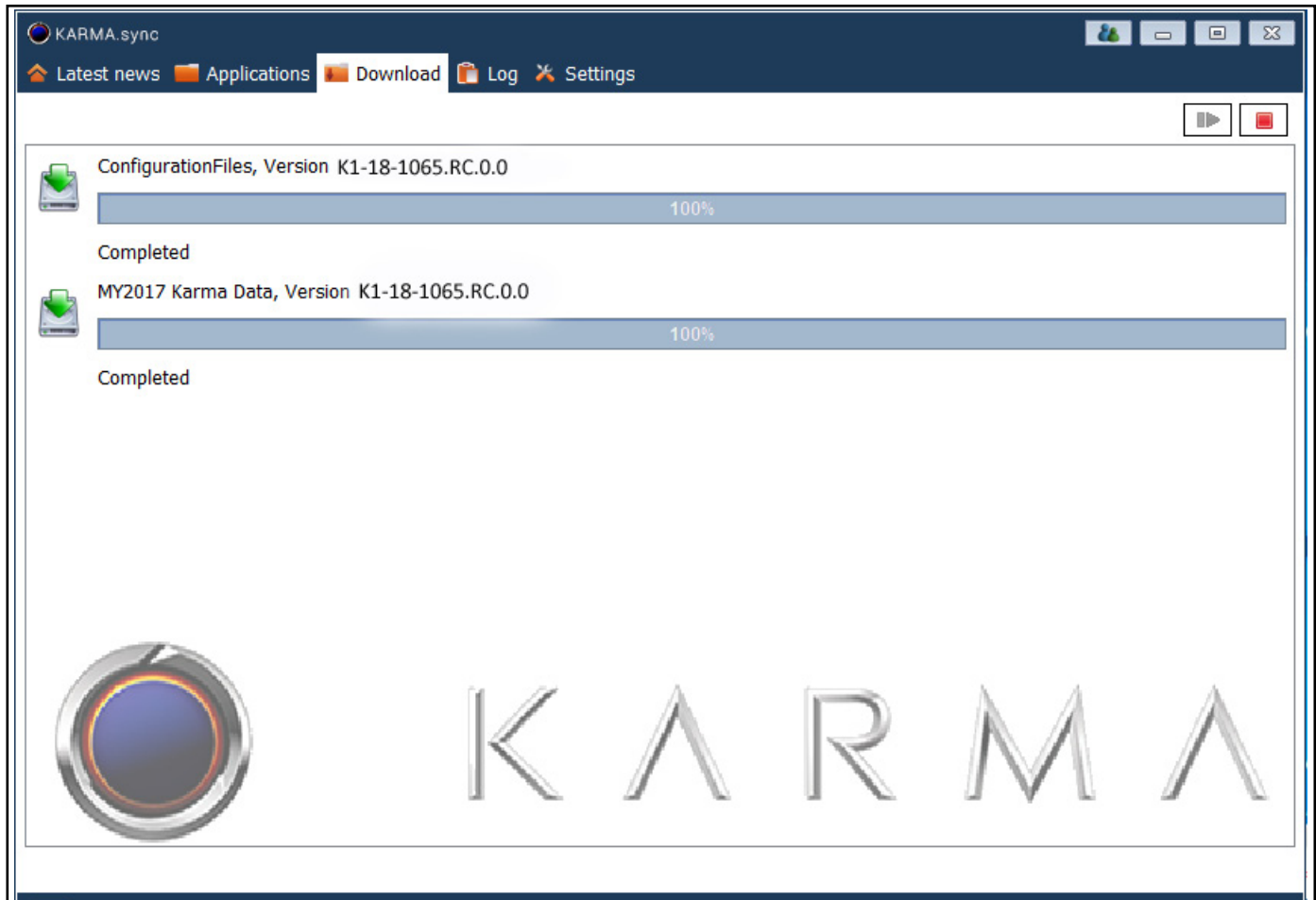


fig.8a

6. When download is complete, follow the on screen prompt (fig. 8b) to allow the software to update on the next restart. (Screens may vary slightly.)

Doing this restart is a complete closing of Karma SYNC and relaunching in order to restart the program.

Karma Automotive Bulletins and service documents are intended for use by experienced and trained Technicians. If you lack the skills, tools, equipment and a suitable workshop for any procedure described in this document, we suggest you leave such repairs to a Karma retailer and service provider. See your service provider for advice on whether your vehicle may benefit from the information contained within this document. The information contained in the Karma Bulletin is accurate at the date of publication. However, Karma Automotive regularly updates technical information. Please check with your Karma Automotive Retailer and Karma Automotive service provider that the bulletin you intend to use contains the latest available information.

Title: BL1065 Software Release

Applicability: Model Year 18 Revero

Market Region: All

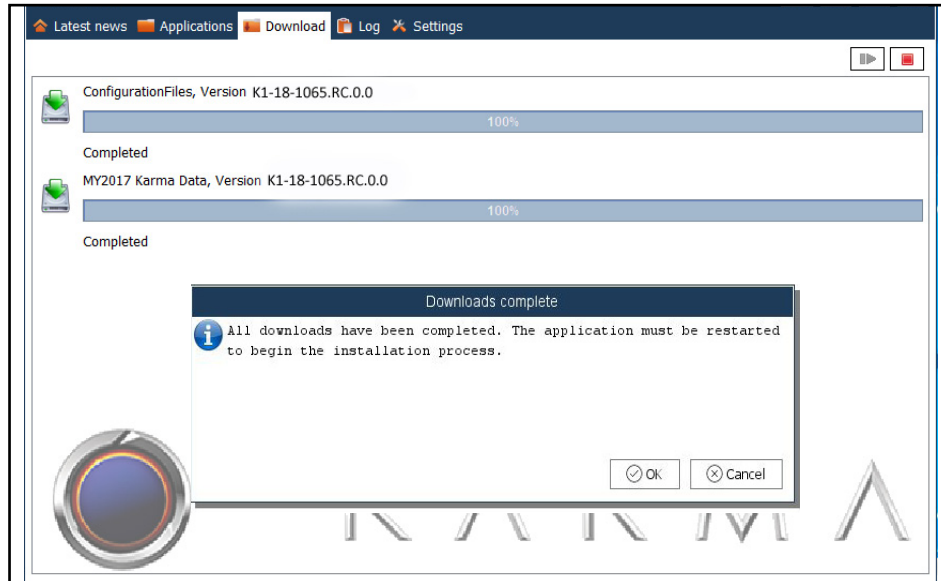


fig. 8b

Restart Scan Tool: The dialog box should open automatically-

**If the dialog box does not open automatically** to download the new software proceed to add software as shown. The Windows tool bar will have a Karma Sync icon, hover over it (fig.9), right-click, proceed to “add software”. Once complete proceed with the remainder of this bulletin.

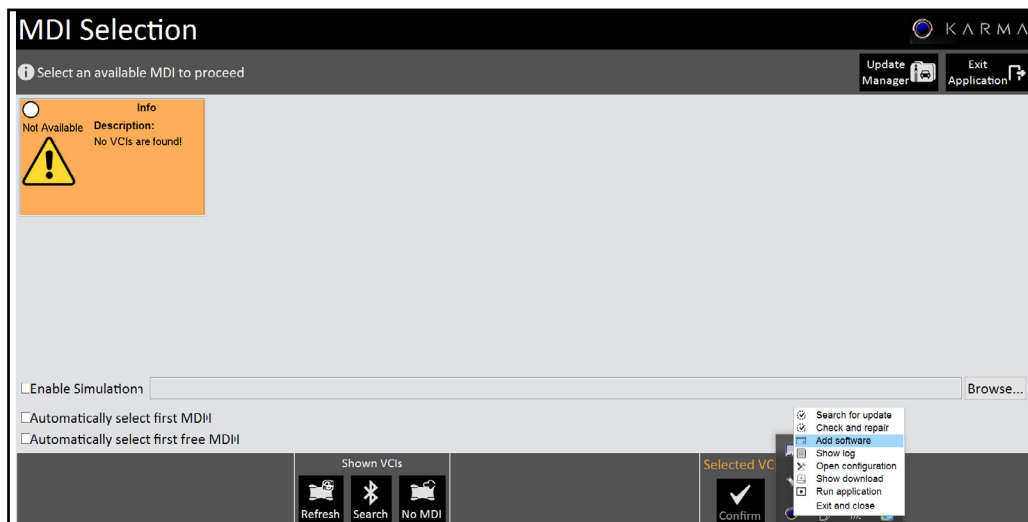


fig.9

If any issue or questions arise contact TSS again in order to resolve these concerns before continuing.

Karma Automotive Bulletins and service documents are intended for use by experienced and trained Technicians. If you lack the skills, tools, equipment and a suitable workshop for any procedure described in this document, we suggest you leave such repairs to a Karma retailer and service provider. See your service provider for advice on whether your vehicle may benefit from the information contained within this document. The information contained in the Karma Bulletin is accurate at the date of publication. However, Karma Automotive regularly updates technical information. Please check with your Karma Automotive Retailer and Karma Automotive service provider that the bulletin you intend to use contains the latest available information.

**Title: BL1065 Software Release**

**Applicability:** Model Year 18 Revero

**Market Region:** All

7. Open the Karma Sync application again.

The “Confirm Deliverable Update - K1-18-1064.RC.0.0” box should appear, click “Yes” (fig. 10a).

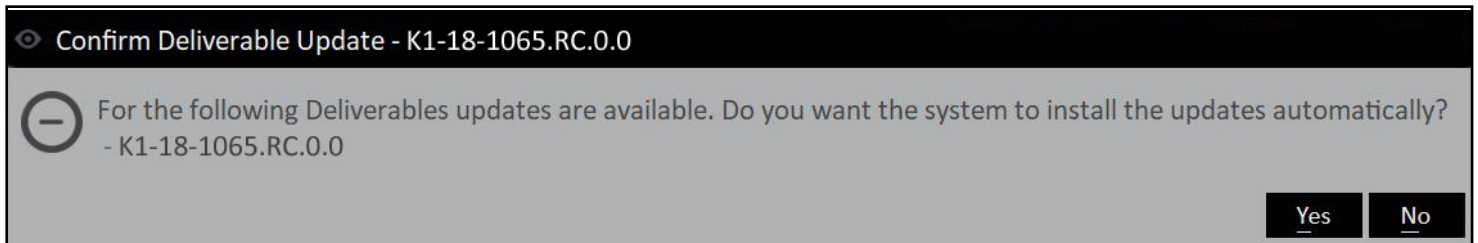


fig.10a

A progress screen will pop up after (fig.10b).

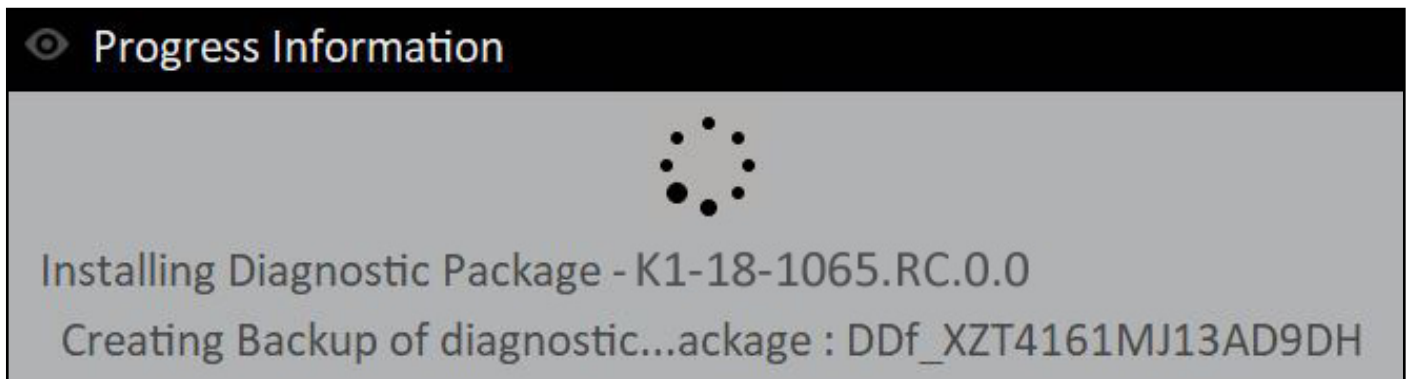


fig.10b

**Title:** BL1065 Software Release

**Applicability:** Model Year 18 Revero

**Market Region:** All

8. Verify the package installed by clicking on update manager (fig.11).

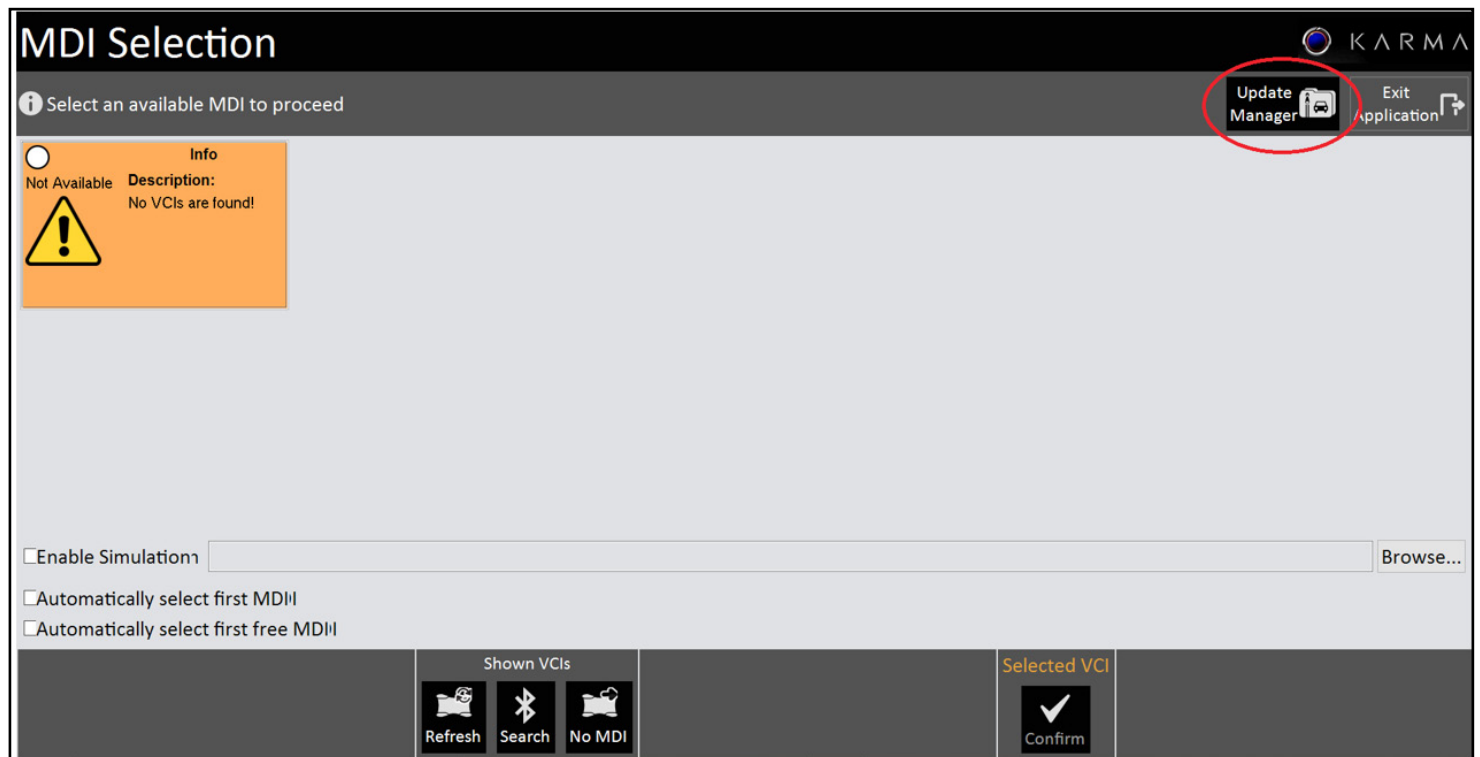


fig.11

Karma Automotive Bulletins and service documents are intended for use by experienced and trained Technicians. If you lack the skills, tools, equipment and a suitable workshop for any procedure described in this document, we suggest you leave such repairs to a Karma retailer and service provider. See your service provider for advice on whether your vehicle may benefit from the information contained within this document. The information contained in the Karma Bulletin is accurate at the date of publication. However, Karma Automotive regularly updates technical information. Please check with your Karma Automotive Retailer and Karma Automotive service provider that the bulletin you intend to use contains the latest available information.

**Title: BL1065 Software Release**

**Applicability: Model Year 18 Revero**

**Market Region: All**

9. Verify the package is installed successfully by verifying that "K1-18-1065.RC.0.0" is displayed in the Update Manager (fig.12).

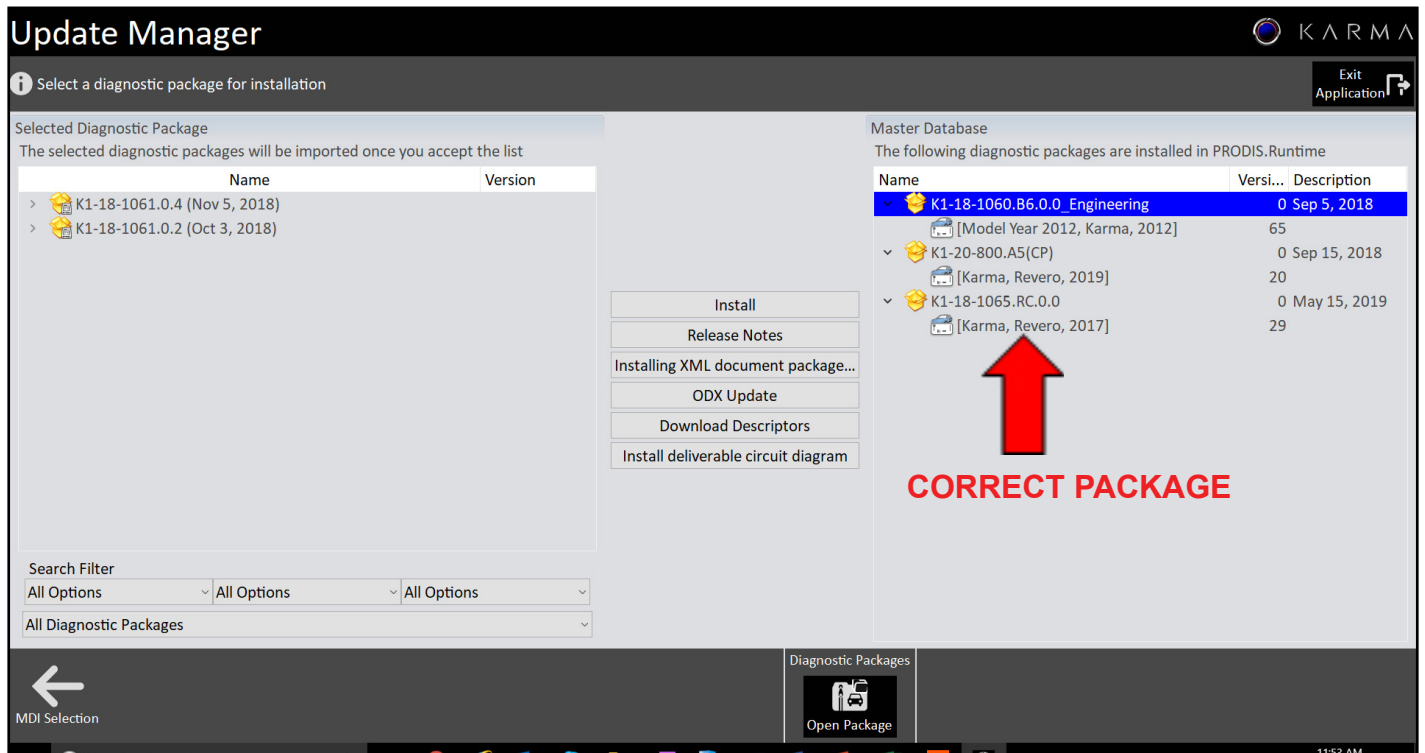


fig.12

Karma Automotive Bulletins and service documents are intended for use by experienced and trained Technicians. If you lack the skills, tools, equipment and a suitable workshop for any procedure described in this document, we suggest you leave such repairs to a Karma retailer and service provider. See your service provider for advice on whether your vehicle may benefit from the information contained within this document. The information contained in the Karma Bulletin is accurate at the date of publication. However, Karma Automotive regularly updates technical information. Please check with your Karma Automotive Retailer and Karma Automotive service provider that the bulletin you intend to use contains the latest available information.

**Title: BL1065 Software Release**

**Applicability: Model Year 18 Revero**

**Market Region: All**

10. Again follow the prompts and ensure that a suitable 12V power supply is connected to the vehicle. and click continue as per (fig. 13a).

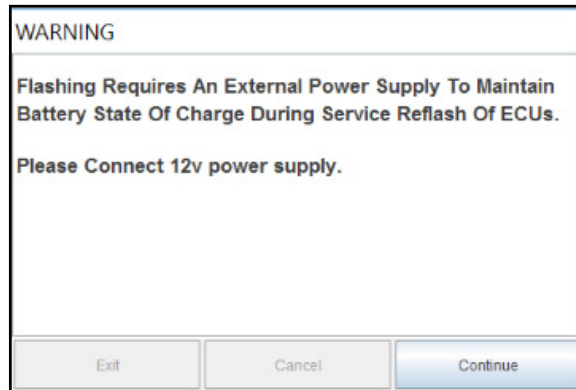


fig.13a

Below is an example of a suitable and recommended power supply (fig.13b).



fig.13b

Karma Automotive Bulletins and service documents are intended for use by experienced and trained Technicians. If you lack the skills, tools, equipment and a suitable workshop for any procedure described in this document, we suggest you leave such repairs to a Karma retailer and service provider. See your service provider for advice on whether your vehicle may benefit from the information contained within this document. The information contained in the Karma Bulletin is accurate at the date of publication. However, Karma Automotive regularly updates technical information. Please check with your Karma Automotive Retailer and Karma Automotive service provider that the bulletin you intend to use contains the latest available information.

**Title:** BL1065 Software Release

**Applicability:** Model Year 18 Revero

**Market Region:** All

11. Return to the vehicle diagnosis menu and select full vehicle update as in (fig.14a) and select K1-18-1064.RC.0.0 as shown below (fig.14b).

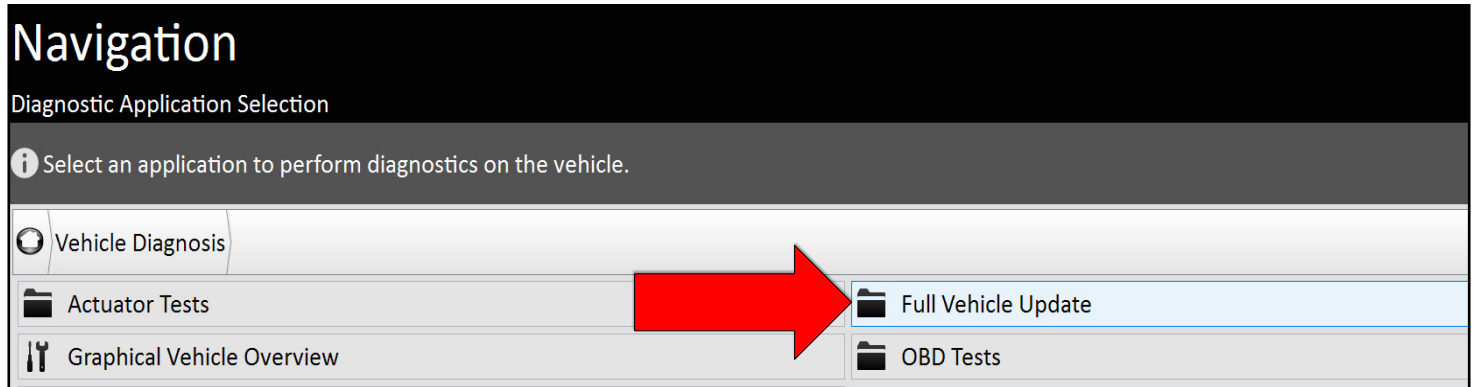


fig.14a

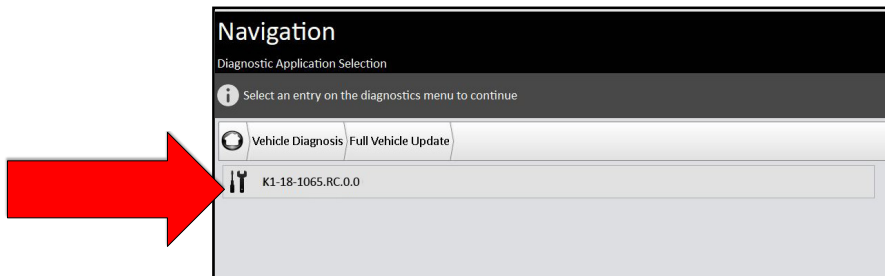


fig.14b

12. Follow the prompts and make sure that a suitable 12V power supply is connected to the vehicle. Click continue (fig.15).

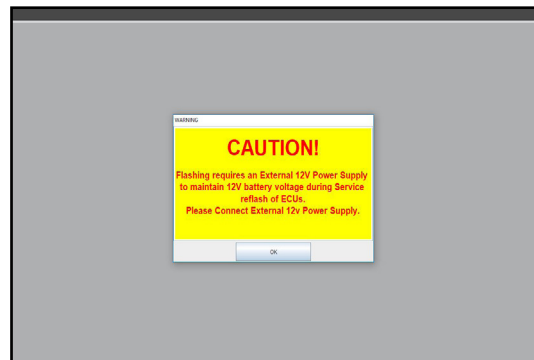


fig.15

Karma Automotive Bulletins and service documents are intended for use by experienced and trained Technicians. If you lack the skills, tools, equipment and a suitable workshop for any procedure described in this document, we suggest you leave such repairs to a Karma retailer and service provider. See your service provider for advice on whether your vehicle may benefit from the information contained within this document. The information contained in the Karma Bulletin is accurate at the date of publication. However, Karma Automotive regularly updates technical information. Please check with your Karma Automotive Retailer and Karma Automotive service provider that the bulletin you intend to use contains the latest available information.

**Title: BL1065 Software Release**

**Applicability: Model Year 18 Revero**

**Market Region: All**

13. The flash information will be populated, as before (fig.16a). (IF the BL1065 is performed for a vehicle post- BL1050, you will update less modules.)
  - If a pop up opens stating the “OBCM failed to communicate;” disregard this message. Proceed to click “next” and follow the prompts.

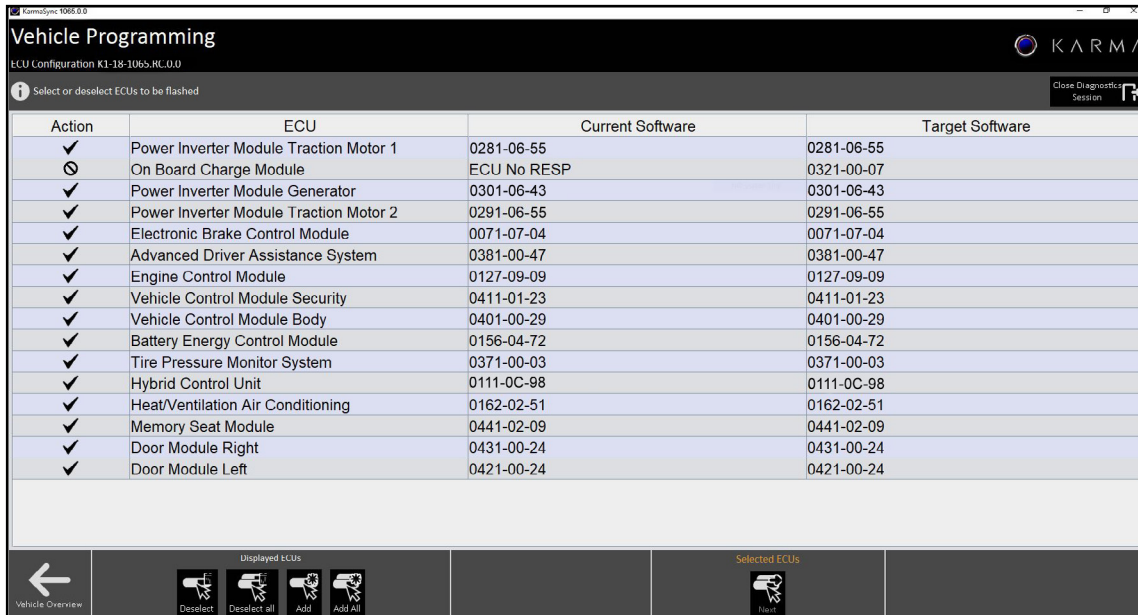


fig.16a

14. Click **START UPDATE**. The modules which will update are displayed, (fig.15b).

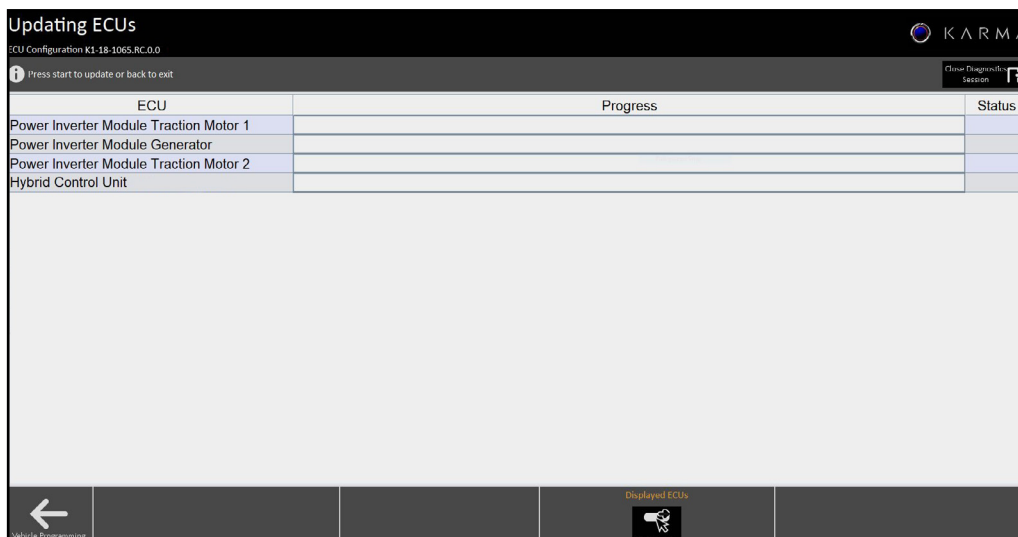


fig.16b

Karma Automotive Bulletins and service documents are intended for use by experienced and trained Technicians. If you lack the skills, tools, equipment and a suitable workshop for any procedure described in this document, we suggest you leave such repairs to a Karma retailer and service provider. See your service provider for advice on whether your vehicle may benefit from the information contained within this document. The information contained in the Karma Bulletin is accurate at the date of publication. However, Karma Automotive regularly updates technical information. Please check with your Karma Automotive Retailer and Karma Automotive service provider that the bulletin you intend to use contains the latest available information.

**Title: BL1065 Software Release**

**Applicability:** Model Year 18 Revero

**Market Region:** All

As instructed place vehicle in the requested mode (fig.17a). Do not walk away from the vehicle, as you will be prompted to switch modes.

15. Follow the prompts and place the vehicle into Accessory or Ready mode. It is normal for the vehicle to appear to be 'stuck on' during this step of the programming. Follow the prompts and do as directed (fig 17a,17b,17c,17d).

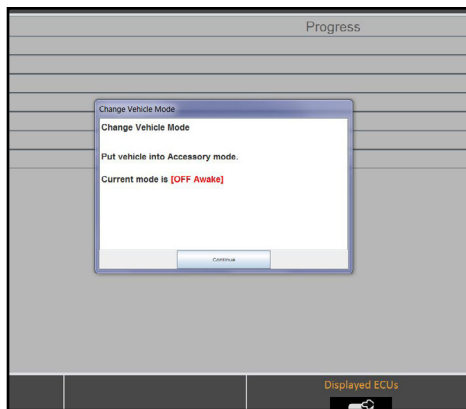


fig.17a

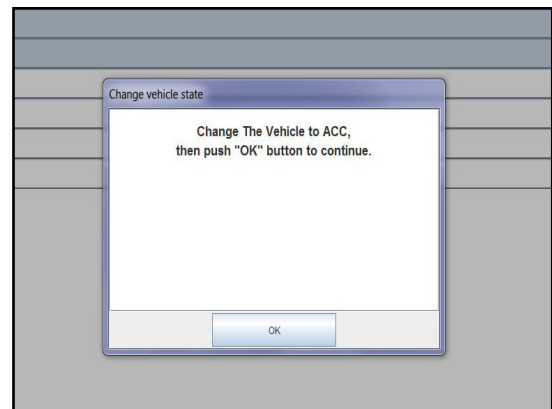


fig.17b

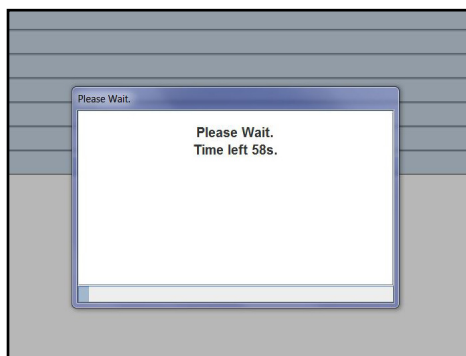


fig.17c



fig.17d

Karma Automotive Bulletins and service documents are intended for use by experienced and trained Technicians. If you lack the skills, tools, equipment and a suitable workshop for any procedure described in this document, we suggest you leave such repairs to a Karma retailer and service provider. See your service provider for advice on whether your vehicle may benefit from the information contained within this document. The information contained in the Karma Bulletin is accurate at the date of publication. However, Karma Automotive regularly updates technical information. Please check with your Karma Automotive Retailer and Karma Automotive service provider that the bulletin you intend to use contains the latest available information.

**Title: BL1065 Software Release**

**Applicability: Model Year 18 Revero**

**Market Region: All**

When complete the green checks should appear (fig. 18 and 18a).

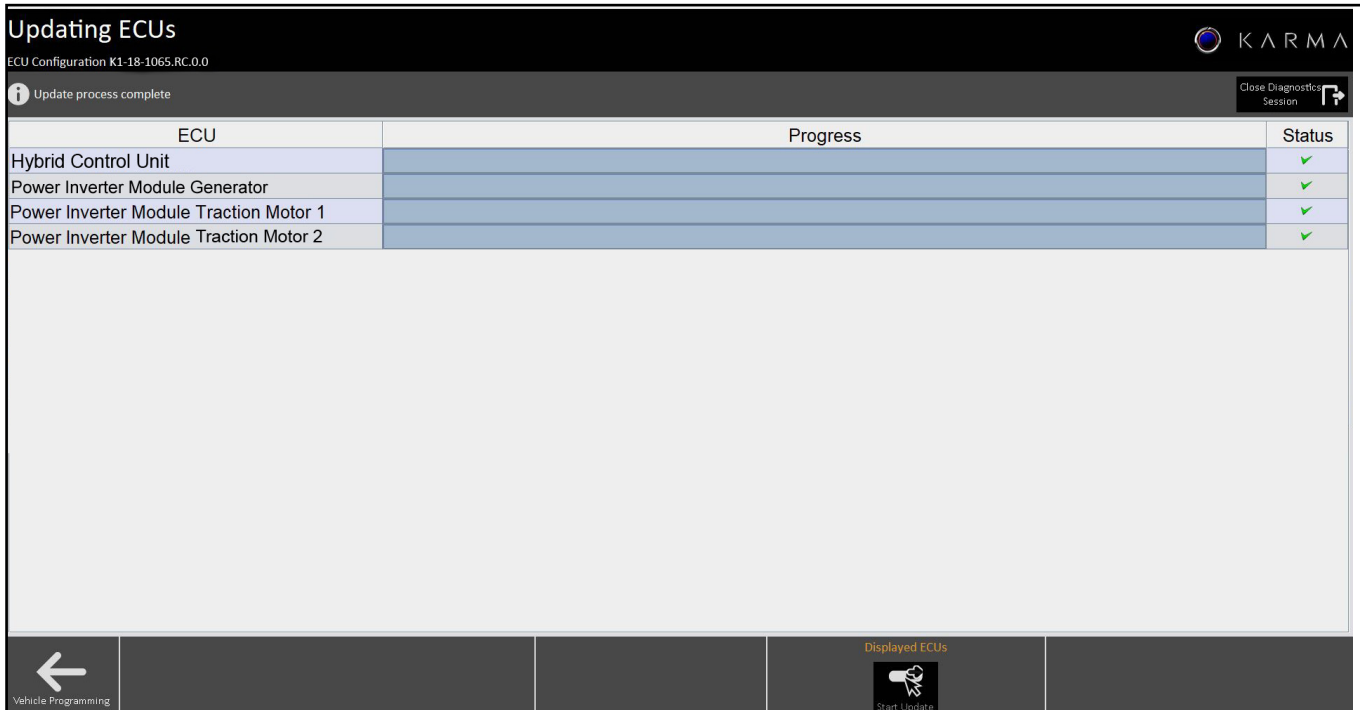


fig.18

Karma Automotive Bulletins and service documents are intended for use by experienced and trained Technicians. If you lack the skills, tools, equipment and a suitable workshop for any procedure described in this document, we suggest you leave such repairs to a Karma retailer and service provider. See your service provider for advice on whether your vehicle may benefit from the information contained within this document. The information contained in the Karma Bulletin is accurate at the date of publication. However, Karma Automotive regularly updates technical information. Please check with your Karma Automotive Retailer and Karma Automotive service provider that the bulletin you intend to use contains the latest available information.

**Title: BL1065 Software Release**

**Applicability: Model Year 18 Revero**

**Market Region: All**

REMINDER: the OBCM will not update.

**⚠ NOTICE! ⚠**

*If any other modules fail to update during this procedure, select that module again and update.*

If any module continues to fail to accept the update, please contact TSS for further instruction on how to proceed.

The flash information will be populated, as before (fig.19) - If a pop up opens stating the “OBCM failed to communicate, or ECU No Resp” disregard this message. Select the modules requiring the update and proceed to click “next” and follow the prompts again if needed.

Action	ECU	Current Software	Target Software
✓	Power Inverter Module Traction Motor 1	0281-06-55	0281-06-55
⊘	On Board Charge Module	ECU No RESP	0321-00-07
✓	Power Inverter Module Generator	0301-06-43	0301-06-43
✓	Power Inverter Module Traction Motor 2	0291-06-55	0291-06-55
✓	Electronic Brake Control Module	0071-07-04	0071-07-04
✓	Advanced Driver Assistance System	0381-00-47	0381-00-47
✓	Engine Control Module	0127-09-09	0127-09-09
✓	Vehicle Control Module Security	0411-01-23	0411-01-23
✓	Vehicle Control Module Body	0401-00-29	0401-00-29
✓	Battery Energy Control Module	0156-04-72	0156-04-72
✓	Tire Pressure Monitor System	0371-00-03	0371-00-03
✓	Hybrid Control Unit	0111-0C-98	0111-0C-98
✓	Heat/Ventilation Air Conditioning	0162-02-51	0162-02-51
✓	Memory Seat Module	0441-02-09	0441-02-09
✓	Door Module Right	0431-00-24	0431-00-24
✓	Door Module Left	0421-00-24	0421-00-24

fig.19

If the displayed “Current Software” is marked as complete with check mark, and the software ID does not match the “Target Software”, return to “Vehicle Overview” and “Vehicle Diagnosis” to reload the list. If the list does not match after a reload, contact TSS.

Karma Automotive Bulletins and service documents are intended for use by experienced and trained Technicians. If you lack the skills, tools, equipment and a suitable workshop for any procedure described in this document, we suggest you leave such repairs to a Karma retailer and service provider. See your service provider for advice on whether your vehicle may benefit from the information contained within this document. The information contained in the Karma Bulletin is accurate at the date of publication. However, Karma Automotive regularly updates technical information. Please check with your Karma Automotive Retailer and Karma Automotive service provider that the bulletin you intend to use contains the latest available information.

**Title: BL1065 Software Release**

**Applicability: Model Year 18 Revero**

**Market Region: All**

16. The update is complete with Karma Sync. Any codes need to be cleared in READY state. Ignore the pop-up of cycling state to ACCESSORY in Karma SYNC. Proceed to clear any DTC's present in the system. (fig.20a, 20b, 20c)

-If nothing is able to clear allow the vehicle to sleep for 10 minutes and make another attempt.

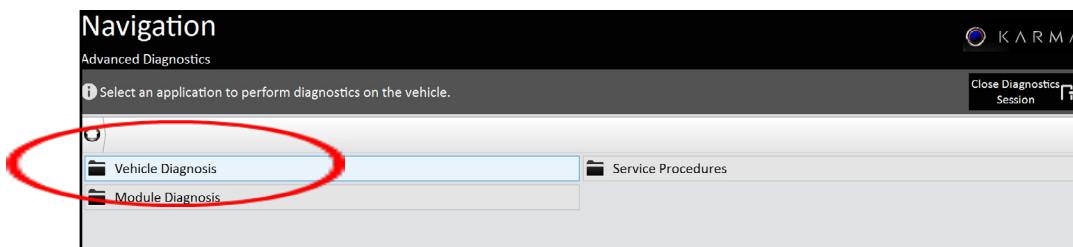


fig.20a

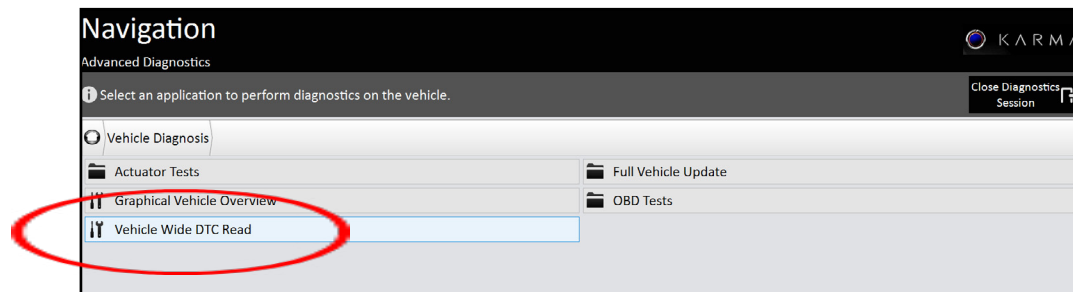


fig.20b

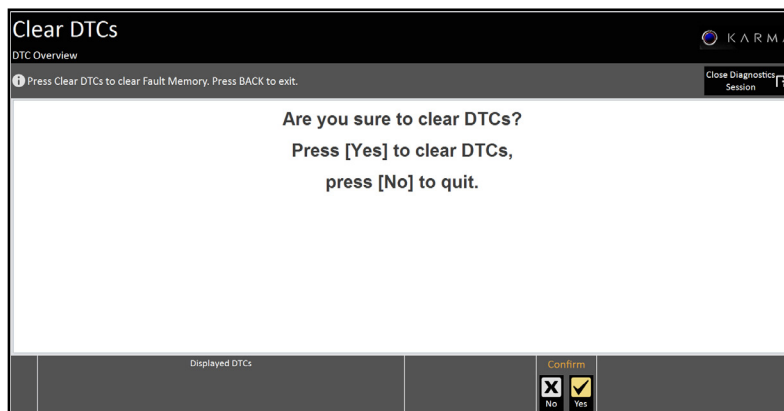


fig.20c

Karma Automotive Bulletins and service documents are intended for use by experienced and trained Technicians. If you lack the skills, tools, equipment and a suitable workshop for any procedure described in this document, we suggest you leave such repairs to a Karma retailer and service provider. See your service provider for advice on whether your vehicle may benefit from the information contained within this document. The information contained in the Karma Bulletin is accurate at the date of publication. However, Karma Automotive regularly updates technical information. Please check with your Karma Automotive Retailer and Karma Automotive service provider that the bulletin you intend to use contains the latest available information.

**Title:** BL1065 Software Release

**Applicability:** Model Year 18 Revero

**Market Region:** All

**PARTS REQUIRED:**

PART NUMBER	DESCRIPTION
N/A	N/A

**CAUSAL PART:**

PART NUMBER	DESCRIPTION
C131183001701	Central Infotainment Unit

**LABOR CODE: (SEE VIN LIST FOR APPLICATION!)**

CODE	DESCRIPTION	TIME	DEFECT CODE
00-99-24-65	Older BL to BL1065 Update	2.0	99-20-20-68

**SUBLET:**

CODE	DESCRIPTION	AMOUNT
N/A		

**WARRANTY DISPOSITION:** This repair is covered under the New Vehicle Limited Warranty, in effect for five (5) years from the in-service date with no mileage limitation.