

Technical product information

Topic	Outer daytime running light/s not working - Warning message within the DIP
Market area	USA+CAN+MEX (4UCM),Hongkong-Macau (5HK),Russische Föderation (5RU),Australia E04 Bentley rest Asia and Australia (6E04),China 796 VW Import Comp. Ltd (Vico), Beijing (6796),Germany E02 Bentley rest Europe (6E02),Korea, (South) E08 Bentley South Korea (6E08),United Arab Emirates E06 Bentley Middle East and Africa (6E06),United Kingdom E01 Bentley UK (6E01)
Brand	Bentley
Transaction No.	2055589/2
Level	EH
Status	Approval
Release date	

Event memory entries

Diagnostic address	Event memory entry	Fault type	Fault status
0029 - Light Control Left	C10EF04: Signature light bulb Faulty		Intermittent
0029 - Light Control Left	C10EF04: Signature light bulb Faulty		static
0039 - Light Control Right	C10EF04: Signature light bulb Faulty		Intermittent
0039 - Light Control Right	C10EF04: Signature light bulb Faulty		static

New customer code

Object of complaint	Complaint type	Position
lighting system, signalling -> exterior illumination -> daytime running lights	functionality -> partially without function	left
lighting system, signalling -> exterior illumination -> daytime running lights	functionality -> partially without function	right

Vehicle data

New Continental GT and New Continental GTC

Sales types

Type	MY	Brand	Designation	Engine code	Gearbox code	Final drive code
3S3*	2018	E		*	*	*
3S3*	2019	E		*	*	*
3S3*	2020	E		*	*	*
3S4*	2019	E		*	*	*
3S4*	2020	E		*	*	*

Chassis numbers

Manufacturer	Filler	Type	Filler	MY	Factory	From	To	Prod from	Prodto
SCB	*	*	*	*	C	071628	075716		

Documents

Document name
master.xml

Customer statement / workshop findings

Customer statement

- Left and/or right outer daytime running light/s not working (Figure 1)



Figure 1

- Warning message also evident within the DIP (Figure 2)



Figure 2

Workshop Findings

- DTC C10EF04 evident within Diagnostic address 29 Light control left and/or 39 Light control right

Technical background

A software error in the headlight control modules can lead to malfunctions with the front Daytime Running Lights.

Production change

All VIN's from SCBDS33S0LC075717 are not affected

Measure

The software of address 29 – *Light control left* and address 39 – *Light control right* require reprogramming. This software reprogramming take place via two separate SVM codes.

Software reprogramming

General information for the reprogramming:

- *The closed-circuit voltage of the vehicle must be at least 12.5 V during the reprogramming. Connect the battery of the vehicle to an external power supply. For further information see the Maintenance manual.*
- *During the reprogramming switch off all unnecessary consumers (ventilation, seat heater, inside light).*
- *Because of the highest transmission stability we recommend the use of the diagnosis interface VAS 6154 (WiFi diagnostic tool) only in the USB operation or the cable-connected VAS 5055 for the reprogramming (updating) of control units. If these units are not available, the diagnosis interface VAS 5054 (A) can also be used in USB mode*

1. Select and run Guided fault finding. Within the Special functions tab select SVM-Code Input then select Perform test (Figure 1).

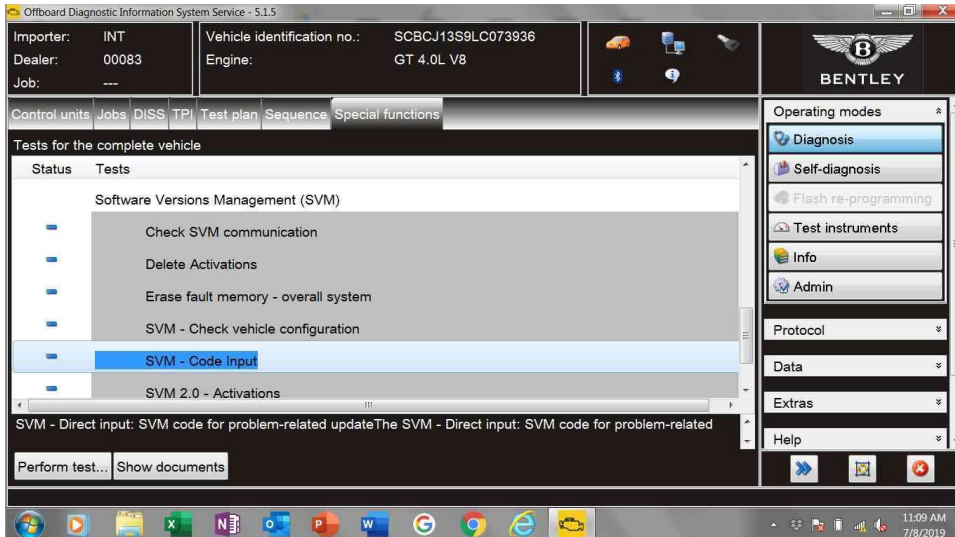


Figure 1

2. On the next screen enter the SVM code 37029LF01 and select Adopt (Figure 2).

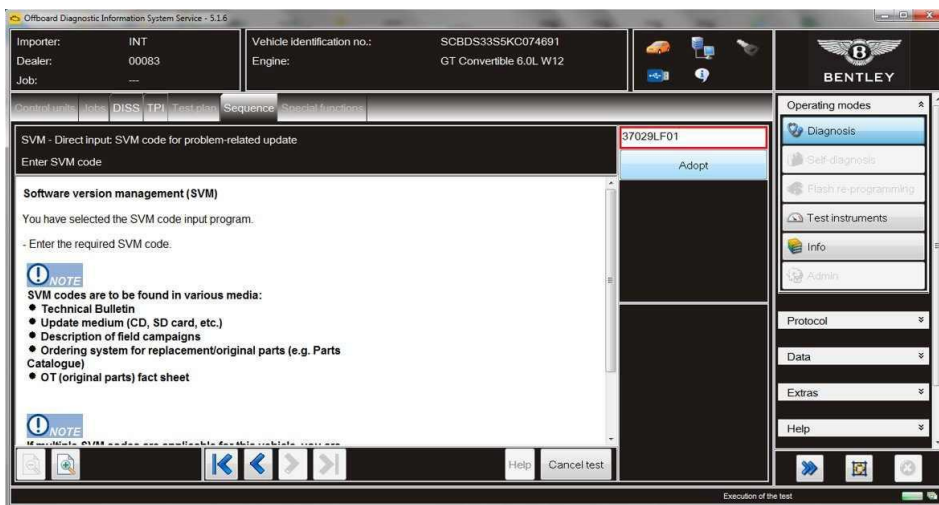


Figure 2

3. On the following screen, confirm the code then select Yes.

4. All control modules will now be interrogated.

5. The software of the left headlight control module will then be reprogrammed, (Figure 3).

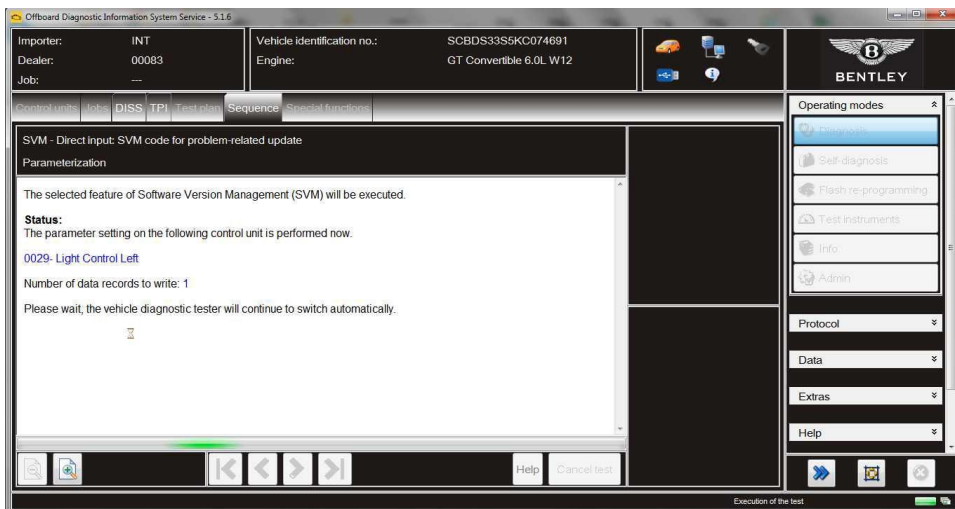


Figure 3

6. Once this is complete you will get a confirmation message that the all actions have been completed successfully. Select Done/Continue, the following screen will bring up a summary of the actions, again select Done/Continue (Figure 5). Follow on screen prompts until program end.

7. Now complete steps 1-6 using SVM code 37039LF01. The right headlight control module will now be reprogrammed.

8. After the update programming is complete, gear selection will not be possible. To wake up the system a bus silence is required, carry out the

following steps in the order stated below;

- Switch off the ignition
- Remove the diagnostic interface from the OBD port
- Switch off and remove the battery charger from the vehicle
- Close the bonnet and all doors then lock the vehicle
- Wait 5 minutes so that the vehicle goes into bus silence
- When 5 minutes has elapsed, unlock the vehicle and open the driver's door
- Switch on the ignition
- Confirm that the gear selection is now possible

Warranty accounting instructions

Warranty type	110 or 910
Labour operation code	01 29 00 04
Damage service number	94 54
Damage code	00 40
Time	40 TU
Criteria ID	01