



Service Bulletin

Bulletin No.: 18-NA-108

Date: September, 2019

TECHNICAL

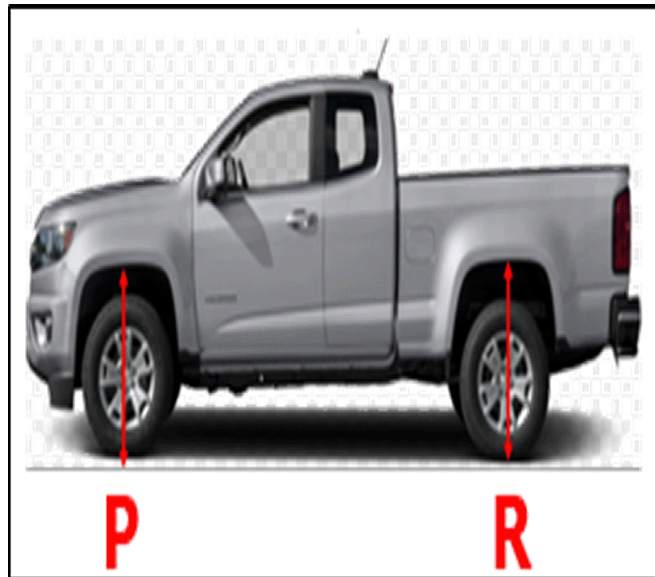
Subject: Body Structure and/or Suspension Leans to the Left

Attention: This bulletin does not apply to ZR2 models.

Brand:	Model:	Model Year:		VIN:		Engine:	Transmission:
		from	to	from	to		
Chevrolet	Colorado	2015	2020				
GMC	Canyon						

Involved Region or Country	North America and NA Export vehicles
Condition	Some customers may comment on their vehicle leaning left. Note: The same steps are followed whether the lean appears in the front, rear or both.
Cause	This condition may be caused by architectural corner mass distribution.
Correction	Perform one of the following to correct this condition: <ul style="list-style-type: none"> • Install a shim on the rear left side between the rear axle and the left side leaf spring. OR <ul style="list-style-type: none"> • Install a shim on the rear left side between the rear axle and the left side leaf spring and replace the front coil spring.

P Height and R Height Measurements



4957635

Measure fender wheel-opening heights, front and rear, to quantify vehicle lean. Fender wheel-opening heights are related to, but distinct from, trim height (a.k.a. Z and D height). The front wheel-opening height is known as P height, and the rear wheel-opening height is known as R height. These are the most direct and repeatable measurement of what a customer would perceive as a leaning condition.

Perform the following before measuring the fender wheel-opening heights:

- Set the tire pressures to the pressure shown on the certification label. Refer to Label - Vehicle Certification in SI.
- The vehicle **MUST** have a full tank of fuel.

Important: GM will **NOT** cover the cost of fuel.

- Ensure proper weight distribution.
- Make sure the vehicle is on a level surface, such as an alignment rack.

If the P and R difference left to right, measurement is 12 mm (0.47 in) or less **DO NOT** perform any repairs.

If the P and/or R difference left to right measurement is 13 mm (1/2 in) or more, follow the steps listed below.

Note: Measurements must be attached to the Warranty claim.

Refer to Trim Height Specifications in SI.

		LEFT	RIGHT
FRONT COIL SPRING RPO:		6 ____	7 ____
NOMINAL "P"	mm ±12	CROSS "P" (LEFT "P" - RIGHT "P") =	mm
FRONT LEFT "P1"	mm	X1 (NOMINAL "P" - LEFT "P1") =	mm
FRONT RIGHT "P2"	mm	X2 (RIGHT "P2" - NOMINAL "P" =	mm
REAR LEFT "R1"	mm	NOMINAL "R"	mm ±12
REAR RIGHT "R2"	mm	CROSS "R" (LEFT "R" - RIGHT "R") =	mm



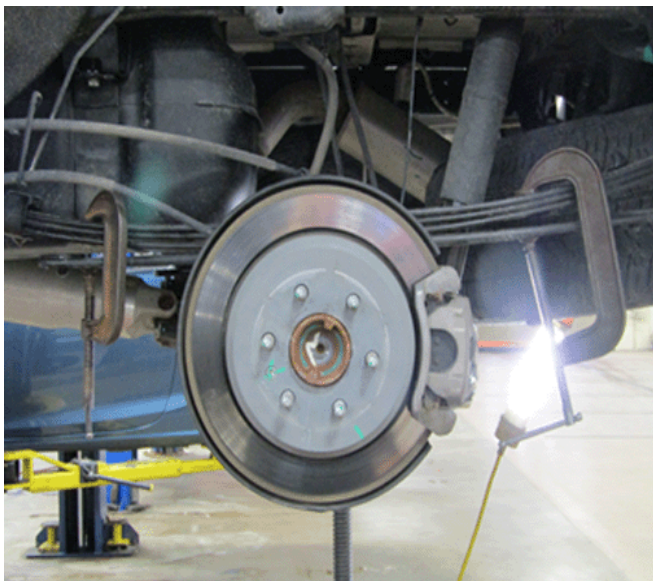
4958046

6. Lower the hydraulic jack stand just enough to be able to slide the shim under the spring and the bolt up through the hole of the spring.

Important: DO NOT disassemble or remove the right rear leaf spring, also, the removal of the left leaf spring or the fuel tank is **NOT** required.

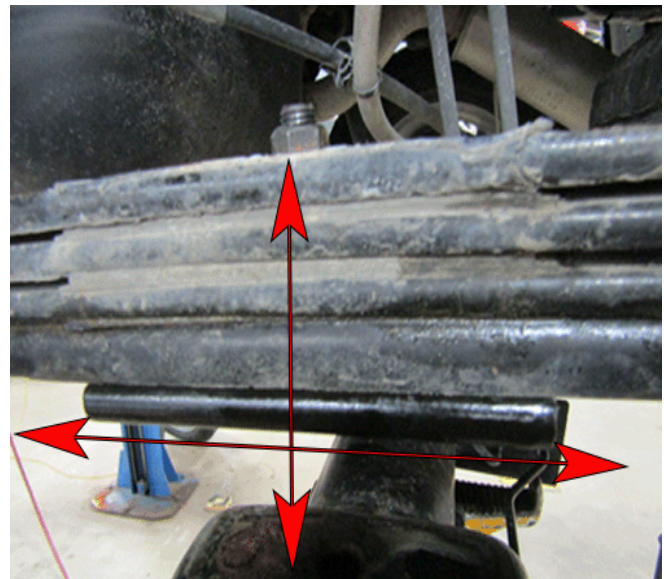
Service Procedure for Shim Installment (ONLY)

1. Raise the vehicle. Refer to Lifting and Jacking the Vehicle in SI.
2. Using a hydraulic jack stand, support the rear axle.



4992651

3. Put a C-clamp on each end of the leaf spring and tighten so that tension is applied.
4. Remove the lower shock absorber nut. Refer to Shock Absorber Replacement in SI.
5. Remove the rear spring anchor plate. Refer to Rear Spring Anchor Plate Replacement in SI.



4956756

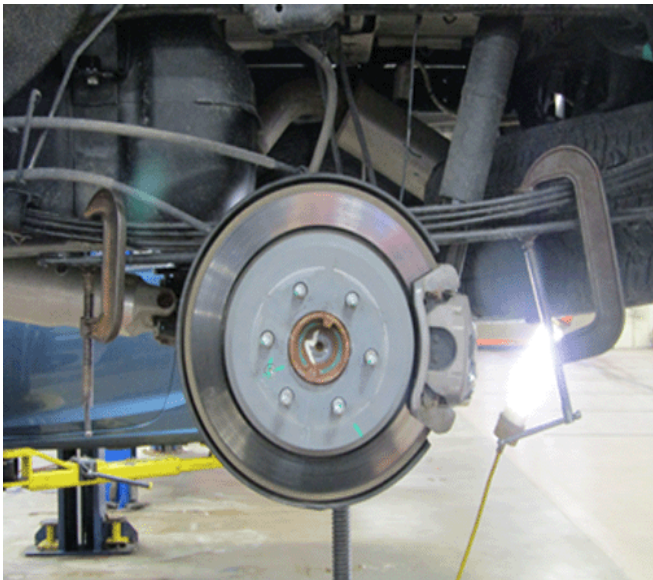
Important: Make sure to line up the shim with the leaf spring.

Tighten

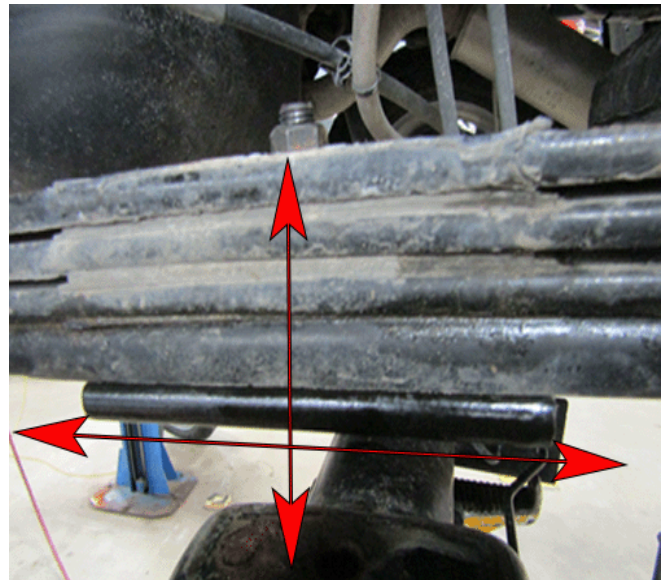
Torque the nut to 100 N.m (74 lb ft) +130°.

Service Procedure for Shim Installment and Front Coil Spring Replacement

1. Raise the vehicle. Refer to Lifting and Jacking the Vehicle in SI.
2. Using a hydraulic jack stand, support the rear axle.



4992651



4956756

3. Put a C-clamp on each end of the leaf spring and tighten so that tension is applied.
4. Remove the lower shock absorber nut. Refer to Shock Absorber Replacement in SI.
5. Remove the rear spring anchor plate. Refer to Rear Spring Anchor Plate Replacement in SI.

Important: The shim **MUST** be lined up with the leaf spring.

Tighten

Torque the nut to 100 N.m (74 lb ft) +130°.

7. Install the front coil spring. Refer to Shock Absorber and Spring Removal/Installation in SI.

Important: The vehicle **MUST** be driven 3 to 5 miles (5 to 8 kms) to settle the suspension after the repair has been made.



4958046

6. Lower the hydraulic jack stand just enough to be able to slide the shim under the spring and the bolt up through the hole of the spring.

Important: **DO NOT** disassemble or remove the right rear leaf spring, also, the removal of the left leaf spring or the fuel tank is **NOT** required.

Parts Information

Causal Part	Description	Part Number	Qty
N/A*	SHIM KIT-RR AUX SPR	84421341	1
	SPRING-FRT COIL	23426900	
		23426901	
		23426902	
		23426903	
		23426904	
		23426905	
		23141685	
		23141684	
		23141686	
		23426898	
23426899			

*For warranty transactions, **DO NOT** mark this/these parts as the Causal Part. Enter the word "Bulletin" in the Causal Part Description free-flow text field.

Follow the steps below for PN chart selection:

1. If the front spring RPO is the same between left/ right (example: 6XU & 7XU, 6 = Left, 7 = Right, the last two letters are the spring check load) go to step 2, otherwise go to step 6 (not required to change any of the front coil spring).
2. If X1 (Left Spring) is greater than X2 (Right Spring) go to step 3, otherwise go to step 4.
3. From the Front Spring Chart find the Left Spring RPO and look for the next highest check load RPO available and go to step 5, if the current spring is at the highest check load go to step 4.

Note: Before and After measurements must be attached to the Warranty claim.

4. From the Front Spring Chart find the Right Spring RPO and look for the next lowest check load RPO available and go to step 5, if the current spring is at the lowest check load go to step 3.

Note: Before and After measurements must be attached to the Warranty claim.

5. Depending on the selection, replace the front left or front right spring (**DO NOT** change both springs).
6. Install the Shim Kit on the rear left leaf spring.

Note: The technician will need to add the comments to the Warranty Claim when the spring RPO is **NOT** the same and the vehicle needs the Shim **ONLY**.

Front Coil Spring Selection Chart (2WD)

GASOLINE LFX / LGZ			SWB / LWB	
Front Left RPO	Front Right RPO	Check LOAD	Spring RATE	Part Number
&6B4.	&7B4.	9339	78.3	23426901
&6B1..	&7B1.	8680		23426900
&6A9.	&7A9.	8022		23426899
&6A8.	&7A8.	7363		23426898

GASOLINE LCV / LFX			SWB / LWB	
Front Left RPO	Front Right RPO	Check LOAD	Spring RATE	Part Number
&6D5.	&7D5.	9339	78.3	23426901
&6D4.	&7D4.	8680		23426900
&6D3.	&7D3.	8022		23426899
&6D2.	&7D2.	7363		23426898

DIESEL LWN			SWB / LWB	
Front Left RPO	Front Right RPO	Check LOAD	Spring RATE	Part Number
&6XL.	&7XL.	10171	90.4	23426905
&6XU.	&7XU.	9504		23426904
&6XT.	&7XT.	8837		23426903
&6XS.	&7XS.	8169		23426902

Front Coil Spring Selection Chart (4WD)

GASOLINE LCV / LFX			SWB	
Front Left RPO	Front Right RPO	Check LOAD	Spring RATE	Part Number
&6EQ.	&7EQ.	10171	90.4	23426905
&6EM.	&7EM.	9504		23426904
&6EB.	&7EB.	8837		23426903
&6EA.	&7EA.	8169		23426902

GASOLINE LCV / LFX			LWB	
Front Left RPO	Front Right RPO	Check LOAD	Spring RATE	Part Number
&6D1.	&7D1.	10171	90.4	23426905
&6C6.	&7C6.	9504		23426904
&6C3.	&7C3.	8837		23426903
&6CS.	&7CS.	8169		23426902

GASOLINE LFX / LGZ			SWB / LWB	
Front Left RPO	Front Right RPO	Check LOAD	Spring RATE	Part Number
&6XL.	&7XL.	10171	90.4	23426905
&6XU.	&7XU.	9504		23426904
&6XT.	&7XT.	8837		23426903
&6XS.	&7XS.	8169		23426902

DIESEL LWN			SWB / LWB	
Front Left RPO	Front Right RPO	Check LOAD	Spring RATE	Part Number
&6D8.	&7D8.	10856	103.4	23141686
&6CY.	&7CY.	10026		23141685
&6CW.	&7CW.	9196		23141684

Measurements After Service Fix

		LEFT	RIGHT
FRONT COIL SPRING RPO:		6 ____	7 ____
FRONT LEFT "P1"	mm	NOMINAL "P"	mm ±12
FRONT RIGHT "P2"	mm	CROSS "P" (LEFT "P" - RIGHT "P") =	mm
REAR LEFT "R1"	mm	NOMINAL "R"	mm ±12
REAR RIGHT "R2"	mm	CROSS "R" (LEFT "R" - RIGHT "R") =	mm

Warranty Information

For vehicles repaired under the Bumper-to-Bumper coverage (Canada Base Warranty coverage), use the following labor operation. Reference the Applicable Warranties section of Investigate Vehicle History (IVH) for coverage information.

Labor Operation	Description	Labor Time
8080388* Note: The technician will need to add the comments to the Warranty Claim when the spring RPO is NOT the same and the vehicle needs the Shim ONLY .	Adding Left Rear Leaf Spring Shim (ONLY)	0.4 hrs
8080408* Note: Before and After measurements must be attached to the Warranty claim.	Adding Left Rear Leaf Spring Shim and Front Coil Spring Replacement	2.6 hrs**
*This is a unique Labor Operation for Bulletin use only.		
**This time includes, adjust front camber and/or caster (both sides), adjust toe and to road test the vehicle.		

Version	4
Modified	Released April 11, 2018 Revised June 20, 2018 – Revising to add Attention statement. Revised October 18, 2018 – Added 2019 Model Year. Revised September 13, 2019 - Added 2020 Model Year and add to replace the front coil spring in the Correction section.

GM bulletins are intended for use by professional technicians, NOT a "do-it-yourselfer". They are written to inform these technicians of conditions that may occur on some vehicles, or to provide information that could assist in the proper service of a vehicle. Properly trained technicians have the equipment, tools, safety instructions, and know-how to do a job properly and safely. If a condition is described, DO NOT assume that the bulletin applies to your vehicle, or that your vehicle will have that condition. See your GM dealer for information on whether your vehicle may benefit from the information.



WE SUPPORT VOLUNTARY
TECHNICIAN
CERTIFICATION