

Fuel Line Rattle/Knocking Noise

Service Category Engine/Hybrid System

Section Fuel System

Market USA

Lexus Supports
ASE Certification 

Applicability

YEAR(S)	MODEL(S)	ADDITIONAL INFORMATION
2016 - 2018	GS350, IS300, IS350, RC300, RC350	VDS(s): C81D2, CZ1BL, CZ1D2, S85BC, SZ5BC Engine(s): 2GR Drive Type(s): AWD Transmission(s): AUTOMATIC

Introduction

Some 2016 – 2018 model year GS350, IS300, IS350, RC300, and RC350 vehicles equipped with a 2GR-FKS engine may exhibit a rattle/knocking noise condition at idle from the driver floor board area due to fuel line contact with the body. Follow the Repair Procedure in this bulletin to address this condition.

Production Change Information

This bulletin applies to vehicles produced **BEFORE** the Production Change Effective VINs shown below.

MODEL	PLANT	DRIVETRAIN	PRODUCTION CHANGE EFFECTIVE VIN
GS350	Motomachi	AWD	JTHCZ1BL#KA011661
IS300	Tahara		JTHC81D2#K5037977
IS350			JTHCZ1D2#K5016886
RC300			JTHS85BC#K5005174
RC350			JTHSZ5BC#K5009467

Fuel Line Rattle/Knocking Noise

Warranty Information

OP CODE	DESCRIPTION	TIME	OFP	T1	T2
EG1911	Adjust Fuel Line Routing	0.4	77252-30570 77252-53050 77252-53120 77252-24040 77252-24100	91	57

APPLICABLE WARRANTY

- This repair is covered under the Lexus Basic Warranty. This warranty is in effect for 48 months or 50,000 miles, whichever occurs first, from the vehicle's in-service date.
- Warranty application is limited to occurrence of the specified condition described in this bulletin.

Parts Information

MODEL	PART NUMBER	PART NAME	QTY
GS350	77252-30570	Tube, Fuel Main, No. 2	-
IS300/IS350	77252-53050		
	77252-53120		
RC300/RC350	77252-24040		
	77252-24100		

Repair Procedure

1. Confirm the condition exists.

Does the vehicle exhibit a rattle/knocking noise from the driver floor board area due to fuel line contact with the body?

- **YES** — Continue to step 2.
- **NO** — This bulletin does NOT apply. Continue diagnosis using the applicable Repair Manual.

Fuel Line Rattle/Knocking Noise

Repair Procedure (continued)

- Inspect the fuel line for a 0.2-in. (5-mm) clearance with the body in the area illustrated in Figures 1 and 2.

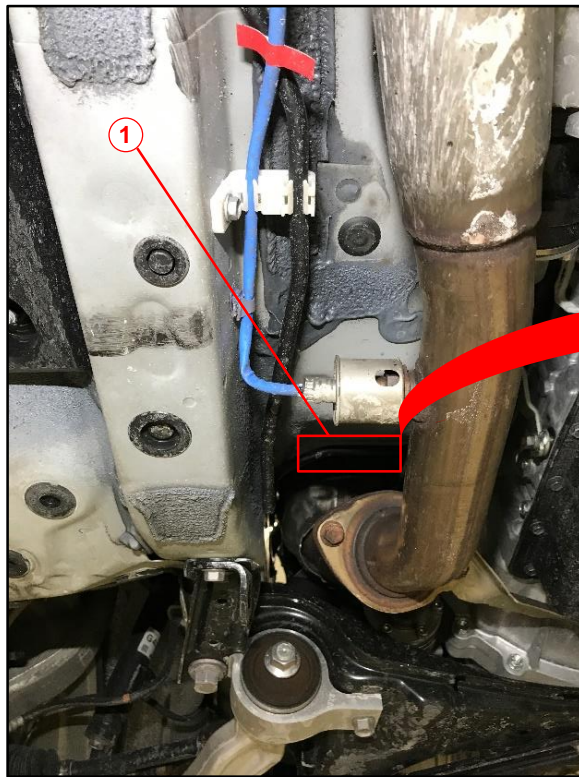
Is there a difference of less than 0.2 in. (5 mm) between the fuel line and body?

- YES** — Continue to step 3.
- NO** — This bulletin does NOT apply. Continue diagnosis using the applicable Repair Manual.

NOTE

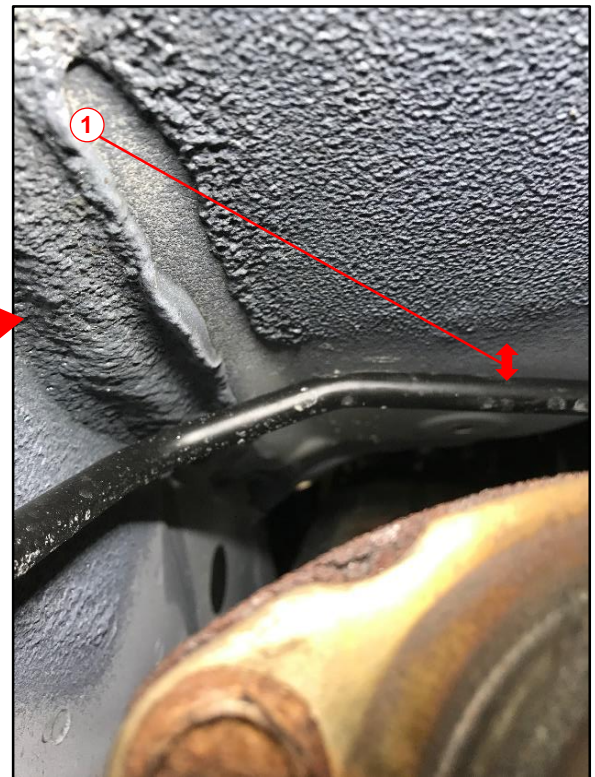
Removal of catalyst heat shield will improve visibility for fuel line clearance measurement.

Figure 1.



1	Contact Area
----------	---------------------

Figure 2.



1	Contact Area
----------	---------------------

Fuel Line Rattle/Knocking Noise

Repair Procedure (continued)

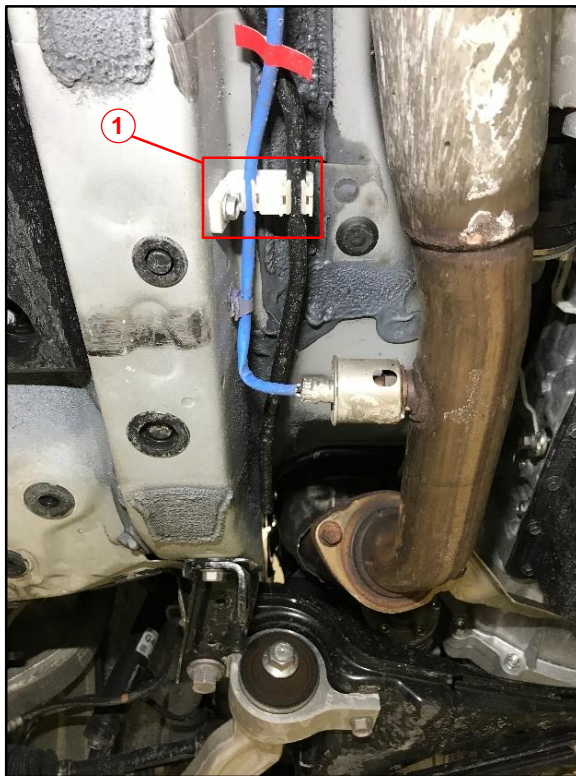
- In Clip A (Figure 3) slide the fuel line towards the front of the vehicle (Figure 4), until the clearance at the contact area is greater than 0.2 in. (5 mm).

NOTICE

Do NOT use pliers or ANY tool that may damage, bend, or deform the fuel line.

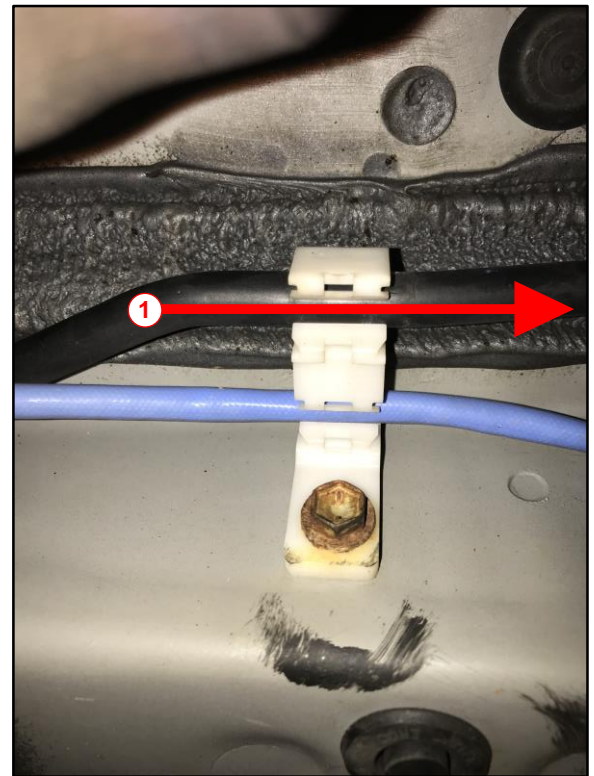
Ensure the clip does not rotate in place.

Figure 3.



1	Clip A
----------	--------

Figure 4.



1	Front of the Vehicle
----------	----------------------

- Confirm the knocking noise from the driver floor board area is no longer present.