



Preliminary Information

PIT5677B SES MIL / No Start / No Crank / Runs Rough / Reduced Engine Power / VSS / DTCs (Inspect Engine Harness)

Models

Brand:	Model:	Model Years:	VIN:		Engine:	Transmissions:
			from	to		
Chevrolet	Silverado 1500 (New Model)	2019	All	All	2.7L L3B	All
GMC	Sierra 1500 (New Model)	2019	All	All	2.7L L3B	All

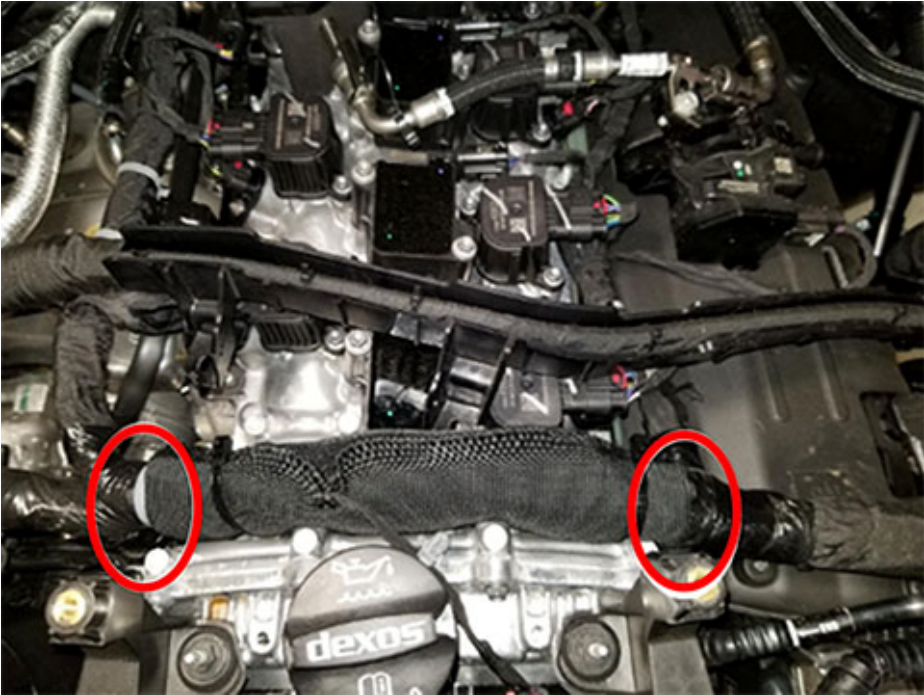
Involved Region or Country	North America
Condition	<p>Some customers may comment on any of the following concerns:</p> <ul style="list-style-type: none">- SES MIL- No Start- No Crank- Engine runs rough- Reduced engine power- Erratic speedometer operation- Blown Fuse(s): F46UA, F47UA, F51UA, F78UA, F85UA, F86UA, F87UA, and/or F90UA <p>When checking for DTC's, any combination of the following codes may be found: C15AA P001A P2B00 P2B01 P2B03 P2B96 P001B P003D P0107 P018C P01E5 P01E6 P01E7 P0237 P0340 P0341 P0355 P0365 P037C P03F0 P0521 P0480 P0522 P0532 P0606 P0616 P0691 P0692 P077C P07BF P1101 P112F P146D P159F P16A0 P16A2 P2122 P26E5 P2812 P2814 P2B33 P2B34 P2B53 P2C05 P2C08 P2C09 P2C0C P2C0D P2C10 P2C12 P2C15 P2C16 P2C19 P305E P3084 P3089 P308E P3093 P3094 P3095 P3098 P30B0 P30B3 P30CF U0073 U0100 U0101 U0140 U0644 U0672</p>
Cause	These concerns may be caused by engine harness contact with under hood components.

Shown below are areas that should be inspected for this concern.

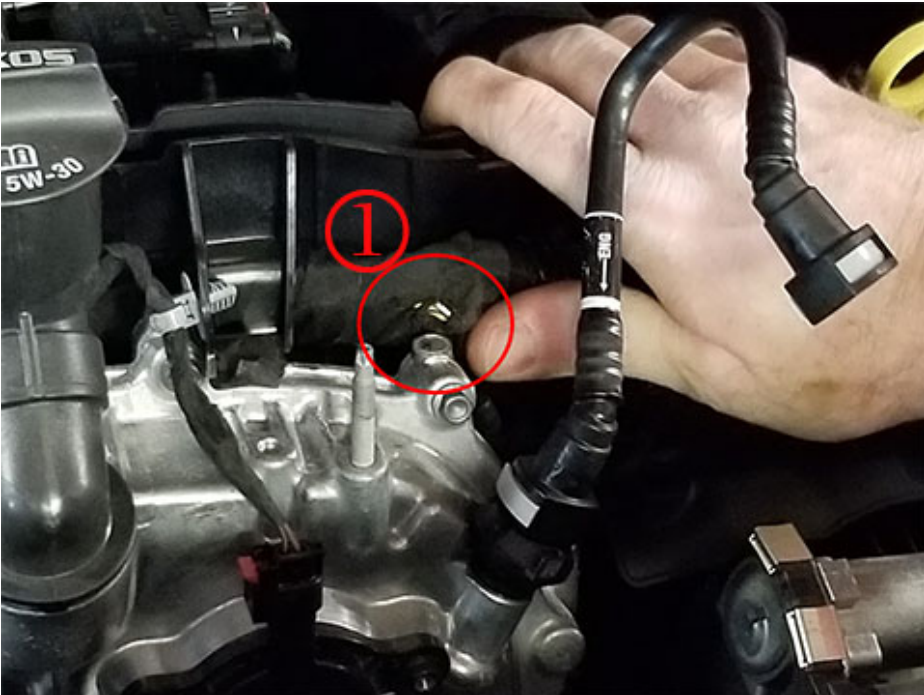
Inspect the engine harness as it crosses over top of the Camshaft Carrier Cover.

Harness damage can occur at any point across the Camshaft Carrier Cover.

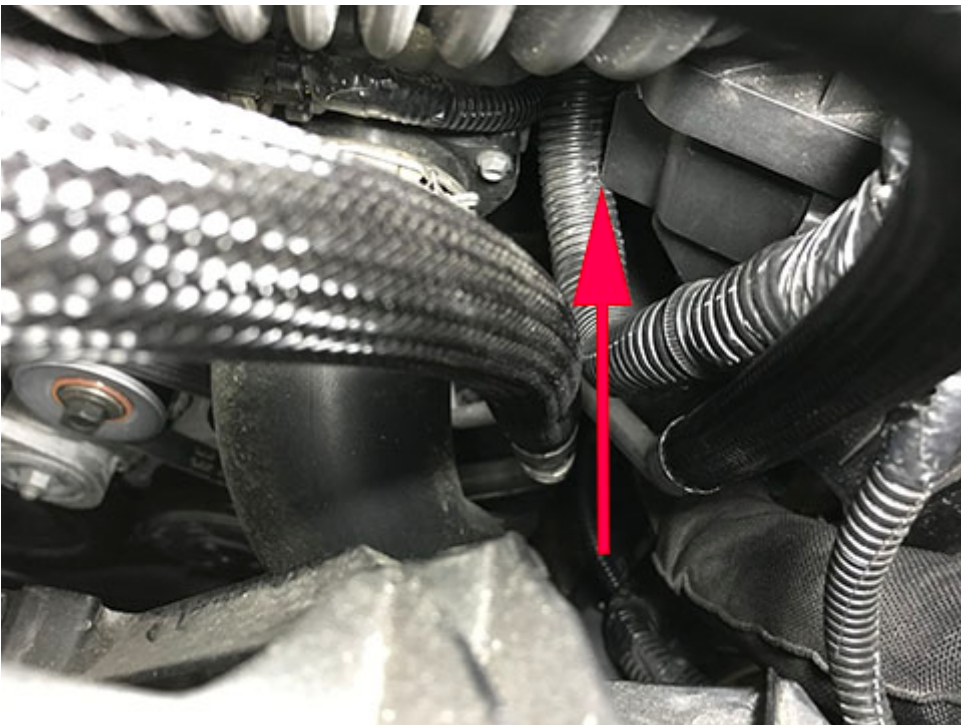
Typical inspection locations shown below.



Example of engine wiring harness damage at Camshaft Carrier Cover shown below.



Inspect the engine harness at the Lower Air Cleaner Housing as shown below.



Example of engine harness damage, Lower Air Cleaner Housing removed shown below.



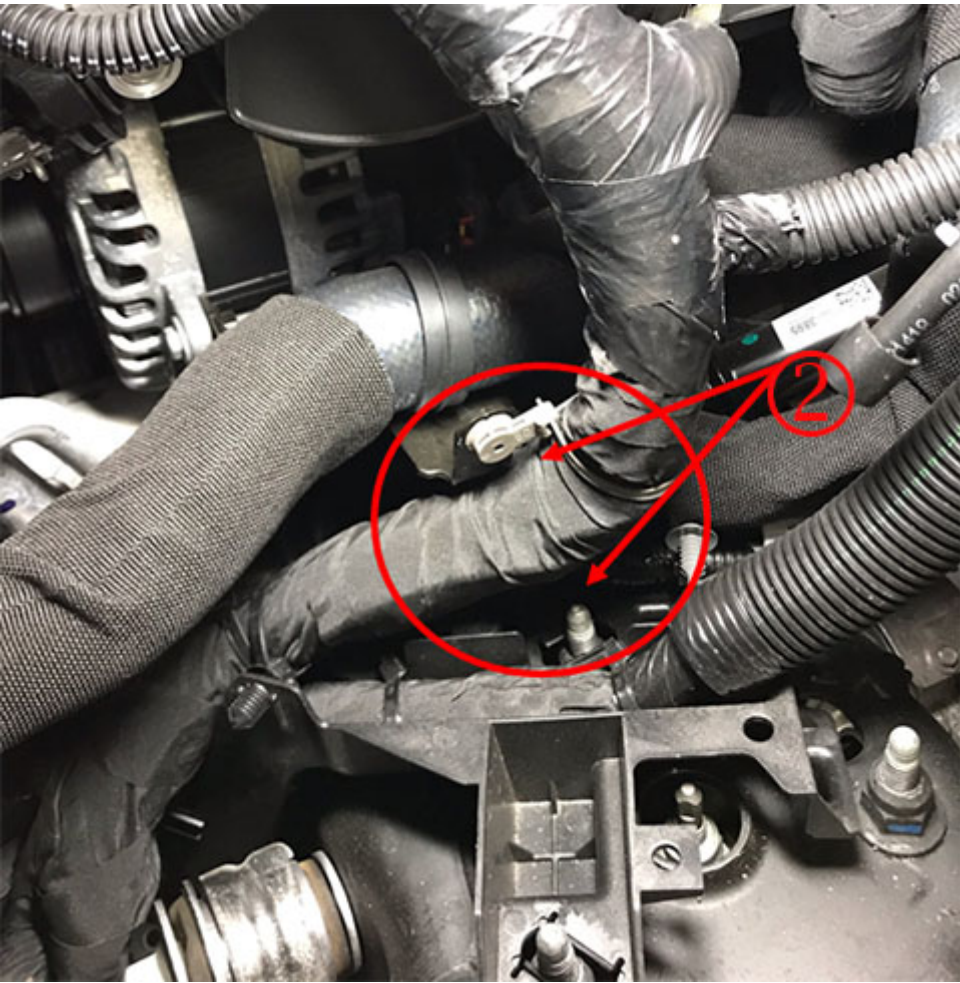
Inspect the engine harness at the Inlet Radiator Hose Bracket and Left Front Coil Spring stud as shown below.

Note: Under normal driving conditions, the engine will rock back and forth in its mounts.

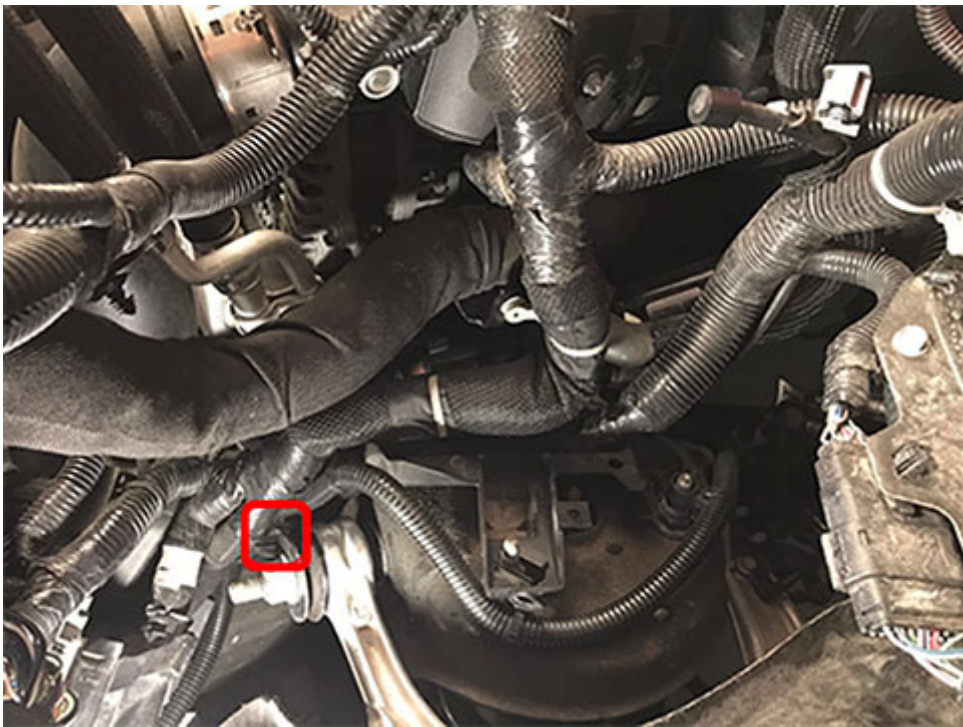
This may result in harness contact with this bracket that may not be present during engine off inspections.

Careful visual inspections are necessary to isolate areas of contact.

It may be necessary to disconnect several engine harness connections to reposition the harness for inspections.



Inspect the engine harness at the Left Front Upper Control Arm Bushing as shown below.



Correction:

If engine wiring harness contact is isolated during inspection, use a seam ripper type tool to carefully inspect for internal wiring damage.

If found, repair the damaged wiring following the SI wire to wire repair procedures.

Once repaired, protect the engine wiring harness at all points listed in this PI using Woven Polyester (PET) Electrical/Anti-Abrasive Tape.

This tape may be purchased at kent-automotive.com Item# 1089482.

Parts Information

Part Number	Description	Quantity
KENT® AUTOMOTIVE 1089482	Woven Polyester (PET) Electrical/Anti-Abrasive Tape	1

Warranty Information

For vehicles repaired under the Bumper-to-Bumper coverage (Canada Base Warranty coverage), use the following labor operation. Reference the Applicable Warranties section of Investigate Vehicle History (IVH) for coverage information.

Labor Operation	Description	Time
5480728	Inspect Harness for Chafing and damage and repair	1.2 Hrs.

Additional SI Keywords

C15AA, P001A, P2B00, P2B01, P2B03, P2B96, P001B, P003D, P0107, P018C, P01E5, P01E6, P01E7, P0237, P0300, P0340, P0341, P0355, P0365, P037C, P03F0, P0480, P0621, P0622, P0521, P0522, P0532, P0616, P0691, P0692, P077C, P07BF, P0960, P0962, P0963, P0964, P0966, P0967, P0968, P0970, P0971, P1101, P112F, P146D, P159F, p16A0, p16A2 , P2122, P26E5, P2812, P2814, P2B53, P2C05, P2C08, P2C09, P2C0C, P2C0D, P2C10, P2C12, P2C15, P2C16, P2C19, P305E, P3084, P3089, P308E, P3093, P3094, P3095, P3098, P30B0, P30B3, P30CF, P0010, P0011, P0013, P0014, P0016, P0017, P001A, P001B, P001C, P002A, P002B, P002C, P0030, P0031, P0032, P0033, P0033, P0034, P0035, P0036, P0037, P0038, P0054, P0068, P0089, P0090, P0091, P0092, P0096, P0097, P0098, P0099, P00C6, P00C8, P00C9, P00CA, P00E9, P00EA, P00EB, P00EC, P00F4, P00F5, P00F6, P0101, P0102, P0103, P0106, P0107, P0108, P0111, P0112, P0113, P0114, P0117, P0118, P0119, P0121, P0121, P0122, P0122, P0123, P0123, P0131, P0131, P0132, P0132, P0135, P0137, P0141, P015A, P015A, P015B, P015B, P0182, P0183, P0187, P0188, P018C, P018D, P0191, P0192, P01E5, P01E6, P01E7, P0201, P0202, P0204, P0222, P0222, P0223, P0223, P0237, P0238, P0245, P0246, P0261, P0262, P0264, P0265, P0267, P0268, P0270, P0271, P0324, P0325, P0326, P0327, P0328, P0330, P0331, P0332, P0333, P0335, P0340, P0341, P0351, P0352, P0353, P0354, P0365, P0366, P03EC, P03ED, P03EE, P03F1, P03F2, P03F3, P0443, P0449, P0451, P0452, P0453, P0454, P0458, P0459, P0498, P0499, P057B, P057D, P057D, P057E, P0606, P0641, P0650, P0651, P0685, P0686, P0687, P0689, P0690, P0697, P06A3, P06B6, P06B7, P1007, P1029, P102A, P102B, P1038, P103A, P103B, P103C, P1096, P1097, P109F, P10A0, P10A1, P10A2, P10E8, P1101, P111F, P1176, P1177, P1178, P1179, P118A, P11C9, P1248, P1249, P124A, P124B, P126E, P126F, P127C, P128A, P128B, P129D, P135A, P1469, P146A, P146D, P146E, P148E, P148F, P157A, P1682, P16A0, P16A0, P16A1, P16A1, P16A2, P16A2, P16A7, P16AF, P16B3, P16D7, P16D8, P16D9, P16E4, P16E5, P20C5, P20C8, P2088, P2089, P2090, P2091, P2122, P2123, P2127, P2128, P2135, P2135, P2138, P2147, P2148, P2150, P2151,

P2153, P2154, P2156, P2157, P2184, P2185, P2186, P2227, P2228, P2229, P2230, P2237, P2237, P223C, P223C, P223E, P223E, P2243, P2243, P2, P2251, P227C, P227D, P227E, P228C, P228D, P2300, P2301, P2303, P2304, P2306, P2307, P2309, P2310, P2626, P263A, P263B, P26B7, P2718, P2720, P2721, P2727, P2729, P2730, P281D, P281E, P2736, P2738, P2739, P2812, P2814, P2815, P2824, P2826, P2827, P2AB8, P2AB9, P2AFE, P2AFF, P2B2D, P2B2E, P2B33, P2B34, P2B35, P2B39, P2B39, P2B3B, P2B81, P2B93, P2BB4, P2BB5, P2BB8, P2BB9, P2BBA, P2C05, P2C06, P2C07, P2C08, P2C09, P2C0A, P2C0B, P2C0F, P2C10, P2C12, P2C13, P2C14, P2C15, P2C16, P2C17, P2C18, P2C19, P2C9B, P30CE, P3080, P3081, P3082, P3085, P3086, P3087, P308A, P308F, P3091, P3094, P3095, P3096, P3099, P309B, P30B0, P30B1, P30B2, P30B3, P30BE, P30BF, P30C2, P30C3, P30C6, P30C7, P30CA, P30CB, PIT5677, PP308C, U0073, U0617, U0644, U111A

Version History

Version	3
Modified	04/29/2019 - Created on 08/26/2019 - Updated to add fuse information, keywords, labor op, pictures, and diagnostic / repair direction. 09/27/2019 - Updated to add additional keywords - codes.



© 2019 General Motors. All Rights Reserved.