

Classification:

AT19-010

Reference:

ITB19-025

COPYRIGHT© NISSAN NORTH AMERICA, INC.

Date:

September 16, 2019

QX60; TRANSMISSION RANGE SWITCH SERVICE INFORMATION

APPLIED VEHICLE: 2014-2019 QX60 (L50)**APPLIED ENGINES:** VQ35DE and VQ35DD**APPLIED TRANSMISSION:** All CVTs**Does not apply to Hybrid models.**

SERVICE INFORMATION

The transmission range switch is now available as a separate service part.

If the transmission range switch is being replaced for any reason, it must be adjusted after its replacement.

- Refer to **SERVICE PROCEDURE** on page 3 for transmission range switch removal, installation, and adjustment.

Infiniti Bulletins are intended for use by qualified technicians, not 'do-it-yourselfers'. Qualified technicians are properly trained individuals who have the equipment, tools, safety instruction, and know-how to do a job properly and safely. **NOTE:** If you believe that a described condition may apply to a particular vehicle, **DO NOT** assume that it does. See your Infiniti retailer to determine if this applies to your vehicle.

REQUIRED ESSENTIAL TOOL

CVT Transmission Range Switch (PNP) J-52306

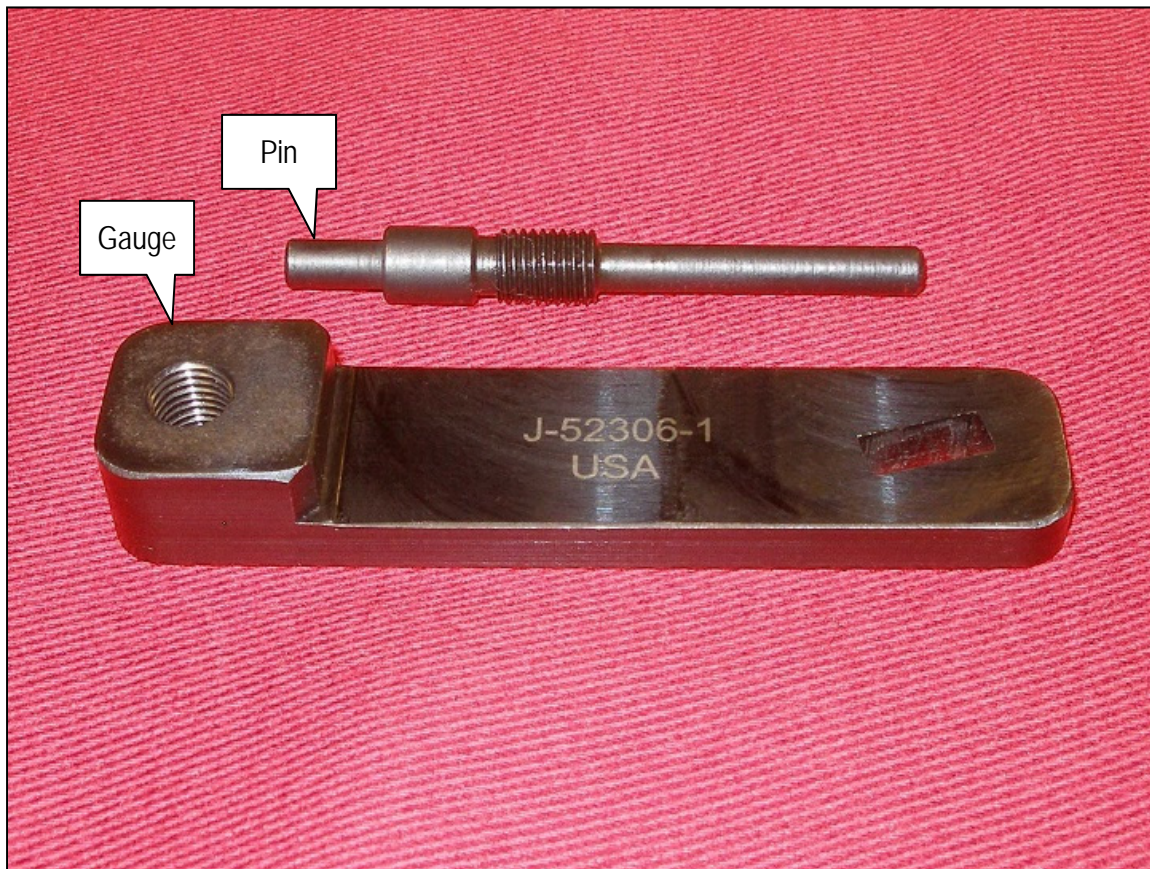


Figure 1

Additional quantities of Tool J-52306 may be purchased at Tech•Mate: 1-800-662-2001, or nissantechmate.com.

SERVICE PROCEDURE

Access the Transmission Range Switch

1. Shift the selector lever to the Park (P) position.
2. Refer to the ESM for removal of the following parts to gain access to the transmission range switch:
 - Upper core support cover
 - Air inlet duct
 - Engine room cover
 - Air Duct hose
 - PCV hose
 - Mass air flow sensor connector
 - Transaxle breather hose
 - Air cleaner assembly

Example of a transmission range switch and CVT (your vehicle may differ)

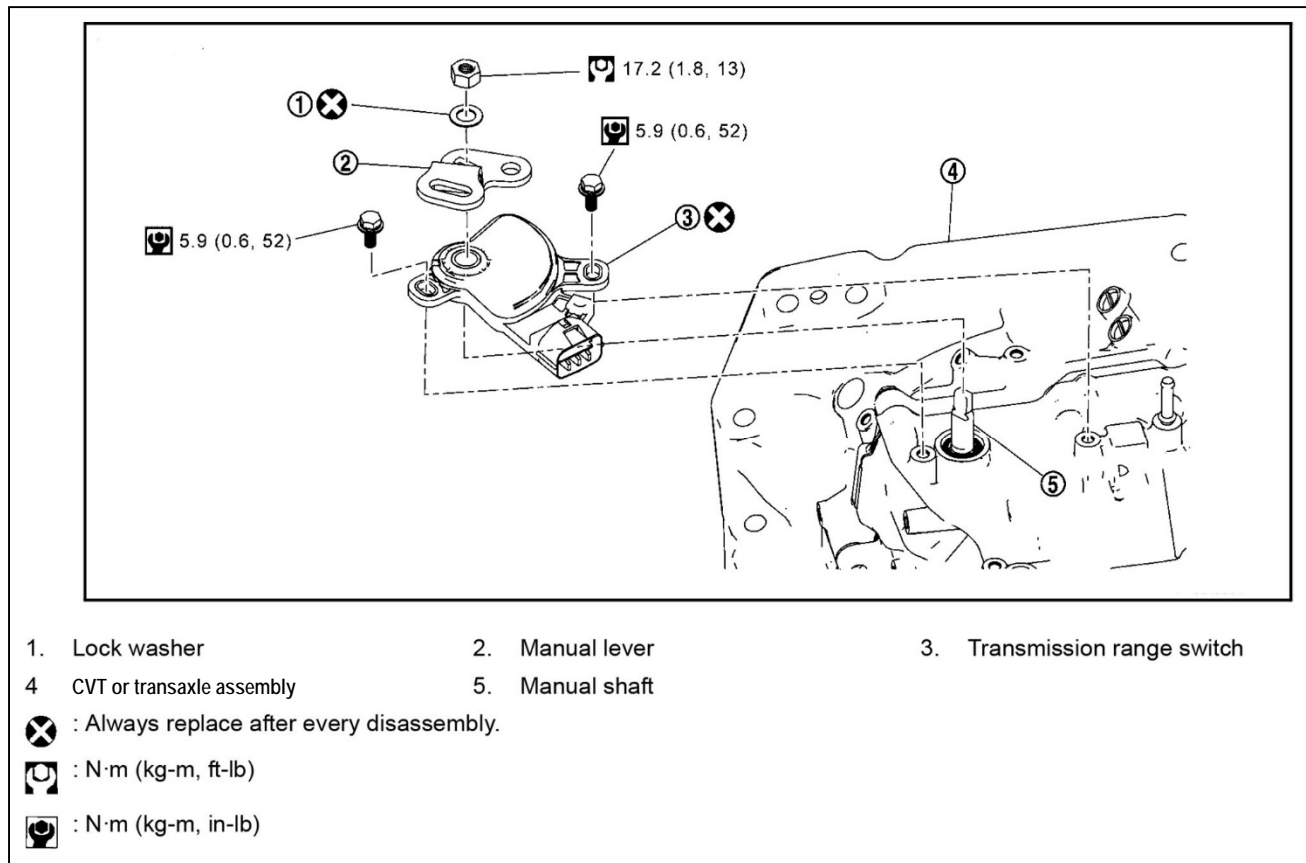


Figure 2

Removal, Installation, and Adjustment – Transmission Range Switch (All APPLIED VEHICLES)

3. After the transmission range switch is accessible, remove the control cable nut.
4. Disconnect the transmission range switch connector.

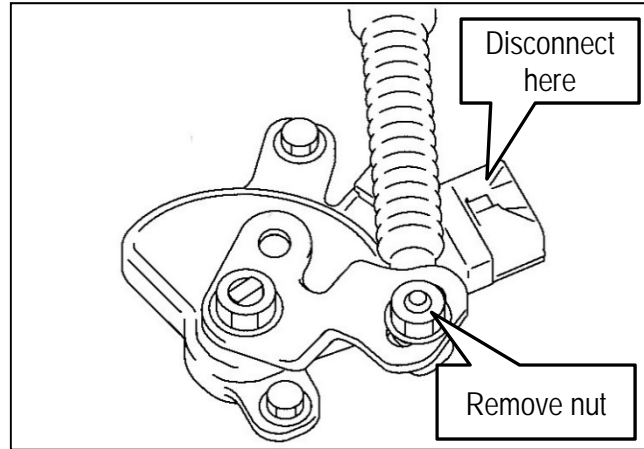


Figure 3

5. Remove the manual lever nut, lock washer, and manual lever from the manual shaft.

NOTICE

The lock washer is a one-time use part (this part is not to be reused after removal).

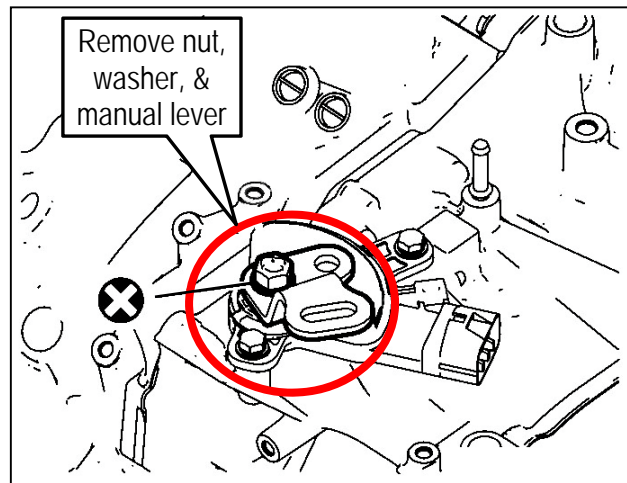


Figure 4

6. Remove the bolts, and then remove the transmission range switch.

NOTICE

The transmission range switch is a one-time use part (this part is not to be reused after removal).

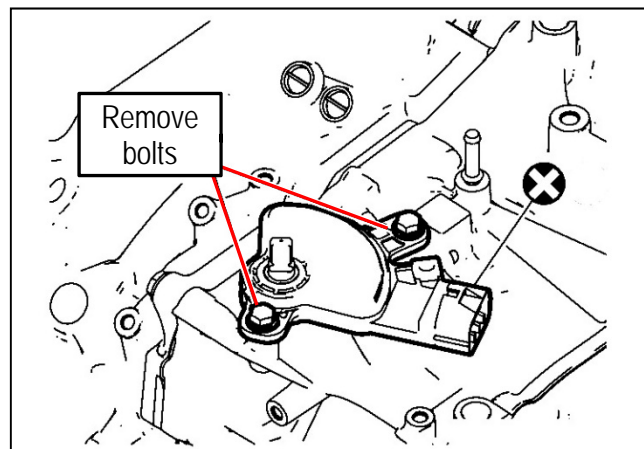


Figure 5

7. Install the replacement transmission range switch, and then install the bolts.
 - The bolts should be loose enough for the transmission range switch to pivot easily.
8. Install the manual lever, but do not install the nut or the lock washer.
9. Using the manual lever, shift the CVT into Neutral (N), and then remove the manual lever.

10. Assemble tool J-52306 (see Figure 6).

HINT: The pin can be threaded into the gauge from either opening. Make sure to insert and thread it into the side shown in Figure 6.

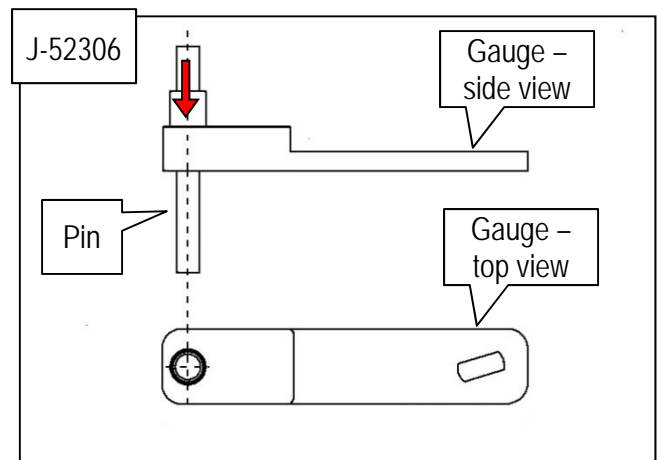


Figure 6

11. Set tool J-52306 onto the manual shaft while inserting its pin in the hole of the transmission range switch (see Figure 7).

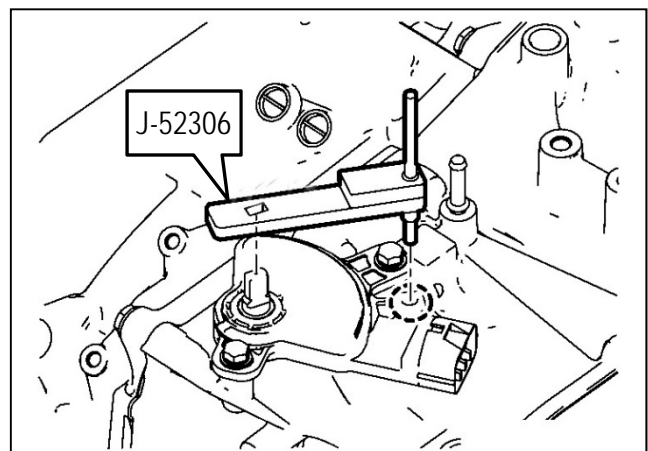


Figure 7

12. Tighten the bolts.
 - Bolts torque: 5.9 N•m (0.6 kg-m, 52 in-lbs)
13. Install the manual lever, lock washer, and nut.
 - Nut torque: 17.2 N•m (1.8 kg-m, 13 ft-lbs)

NOTICE

The lock washer is a one-time use part. Replace the old one with a new one.

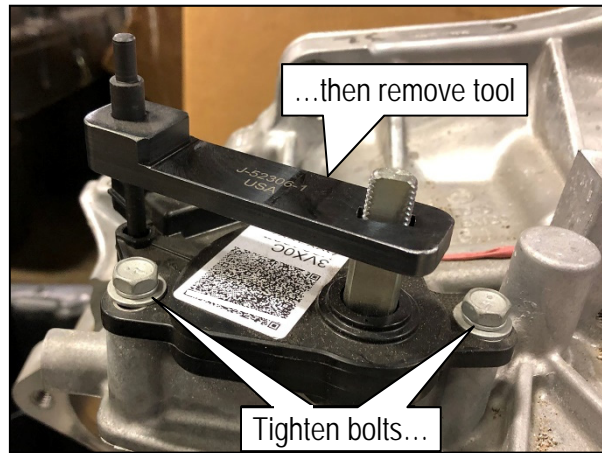


Figure 8

14. Reassemble the vehicle in the reverse order of disassembly.
15. Verify:
 - a. The shift selector cannot be shifted out of Park without depressing the brake pedal.
 - b. The shift selector can be shifted out of Park with the brake pedal depressed.

PARTS INFORMATION

DESCRIPTION	PART NUMBER	QUANTITY
PARK/NEUTRAL POSITION SWITCH (transmission range switch)	31918-29X0C	1
WASHER (lock washer)	08916-3401A	1

CLAIMS INFORMATION

Submit a Primary Part (PP) type line claim using the following claims coding:

DESCRIPTION	PFP	OP CODE	SYM	DIA	FRT
Replace Park/Neutral Switch	(1)	JD56AA	ZE	32	(2)

- (1) Reference the electronic parts catalog and use the Park/Neutral Switch (31918-*****) as the Primary Failed Part (PFP).
- (2) Reference the current Infiniti Warranty Flat Rate Manual and use the indicated Flat Rate Time (FRT).

AMENDMENT HISTORY

PUBLISHED DATE	REFERENCE	DESCRIPTION
September 16, 2019	ITB19-025	Original bulletin published