

### Fuel overflow hose replacement

#### Description:

This procedure outlines the steps to replace the fuel overflow hose and clamp on the fuel tank for the J coaches.

#### **WARNING**

*Read this entire procedure before beginning work.*

*Use Safe Shop Practices at All Times.*

*To avoid personal injury:*

- a. Proper Personal Protective Equipment (PPE) must be worn. Safety glasses and protective gloves are required for working with DEF Fluid.*
- b. Turn the main battery disconnect switch to the OFF position.*
- c. Ensure that both the front and the rear wheels are chocked.*
- d. Positioning the ENGINE RUN and ENGINE START switches on the engine compartment remote control box to the OFF position.*
- e. Allow enough time for components to cool down prior to working in the engine compartment.*

**1.0 Material requirements:**

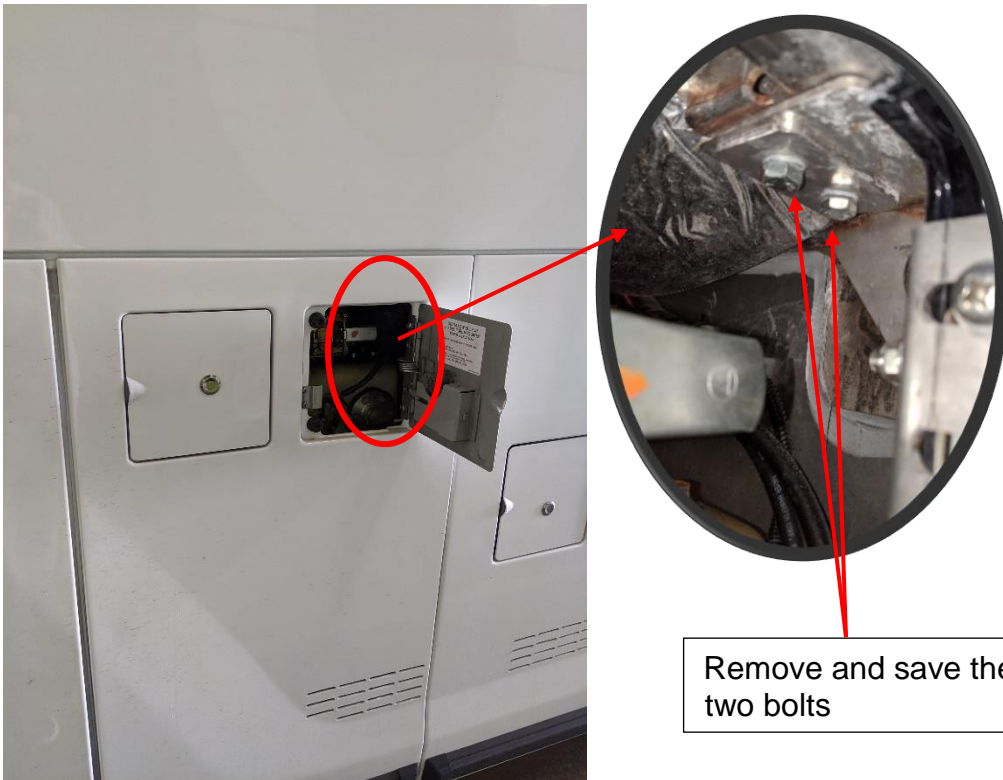
ITEM	PART NO	QTY	U/M	DESCRIPTION
1	06-14-1675	2	EA	Hose- Overflow, Coolant
2	19-04-0384	2	EA	Clamp-Spring, Uniclamp, 0.59 ID
3	19-11-258	1	EA	Tyrap- 7.31" Long

**2.0 Special Tools:**

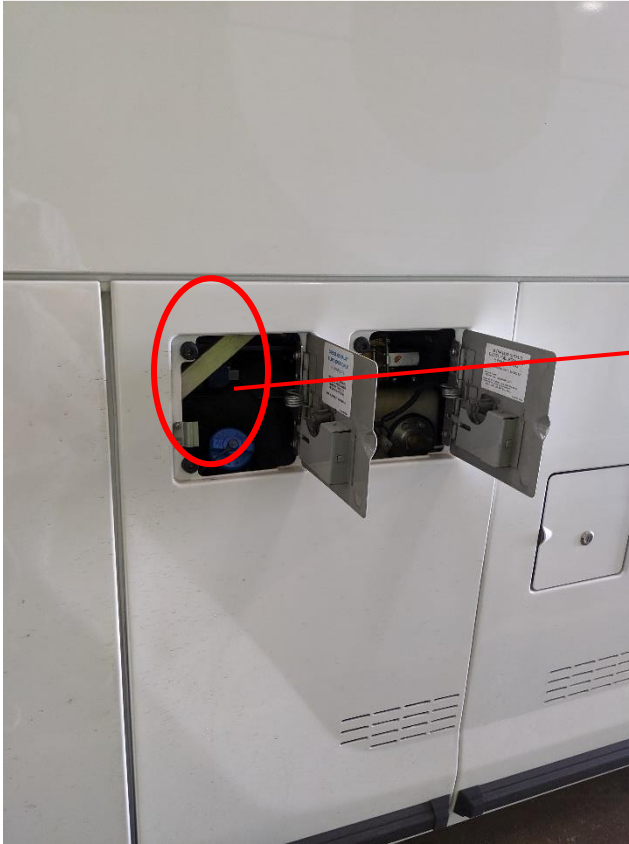
No special tools required.

**3.0 Replace the hose and hose clamps:**

Open the fuel tank access door and remove the two bolts securing the fuel door. Save the bolts for later use.



Open the DEF access door and remove the two bolts securing the fuel door. Save the bolts for later use.



Remove and save the two bolts

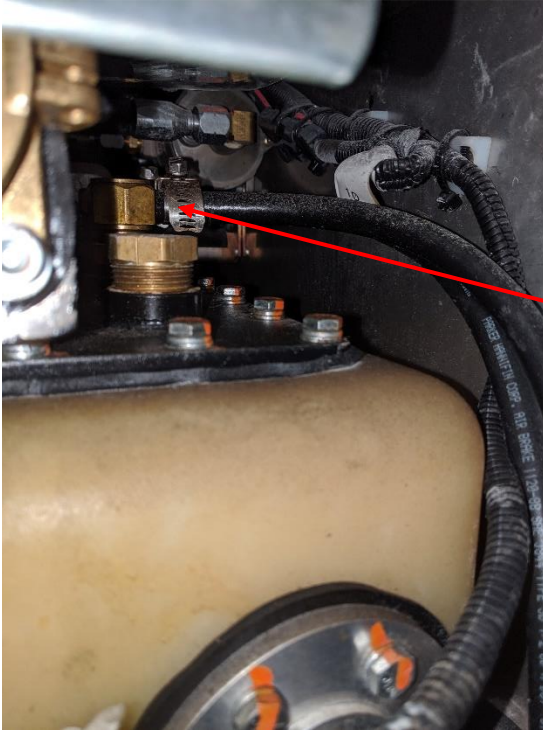
Take the fuel door out.

Remove and discard the hose and clamp secured to the safety valve of the fuel tank.



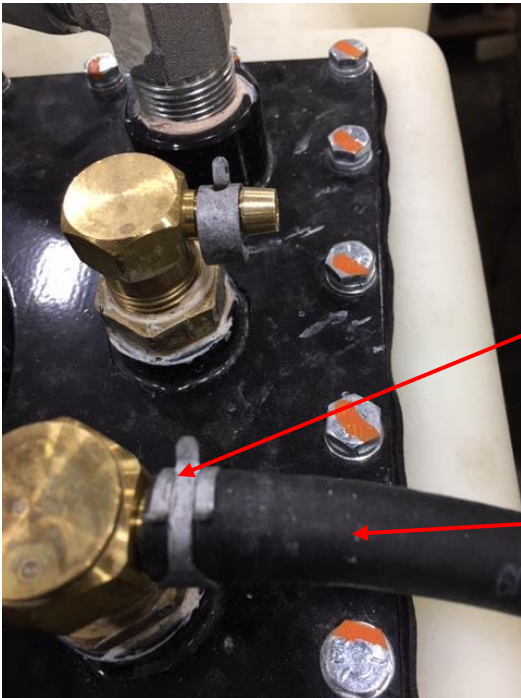
Remove and discard the fuel hose and clamp

Remove and discard the hose and clamp secured to the relief valve of the fuel tank.



Remove and discard the fuel hose and clamp

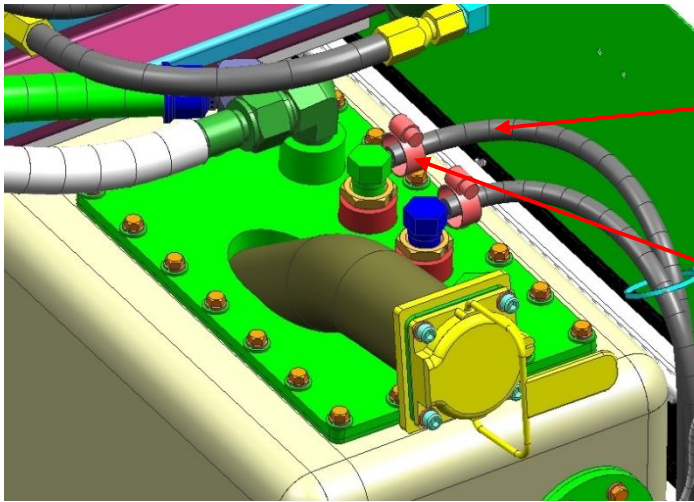
Cut the hose, MCI P/N: 06-14-1675, to 3.8ft and discard the rest. Install the modified hose to the relief valve using new hose clamp, MCI P/N: 19-04-0384 as shown below.



Hose clamp, MCI P/N: 19-04-0384

Hose, MCI P/N: 06-14-1675

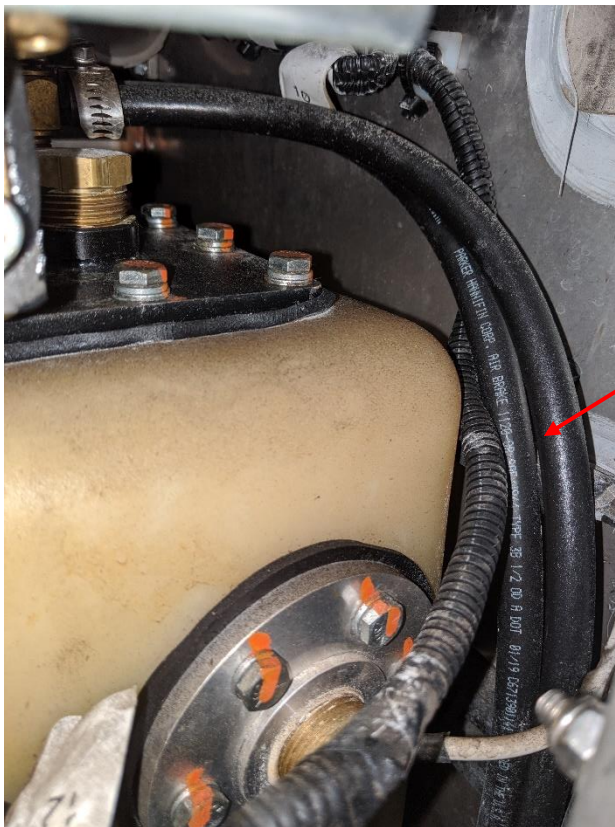
Cut the hose, MCI P/N: 06-14-1675, to 4.3 ft and discard the rest. Install the modified hose to the safety valve using the hose clamp, MCI P/N: 19-04-0384.



Hose, MCI P/N: 06-14-1675

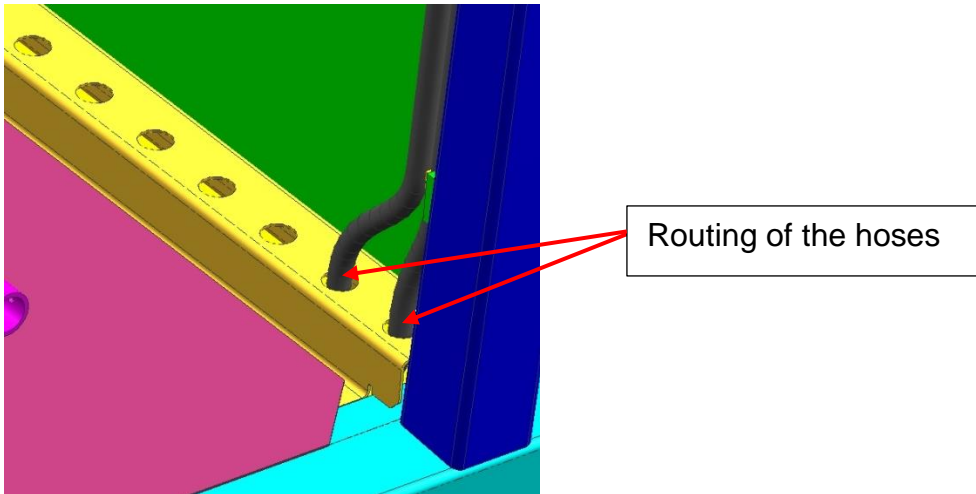
Hose clamp, MCI P/N: 19-04-0384

Route the hoses towards ground as shown below.

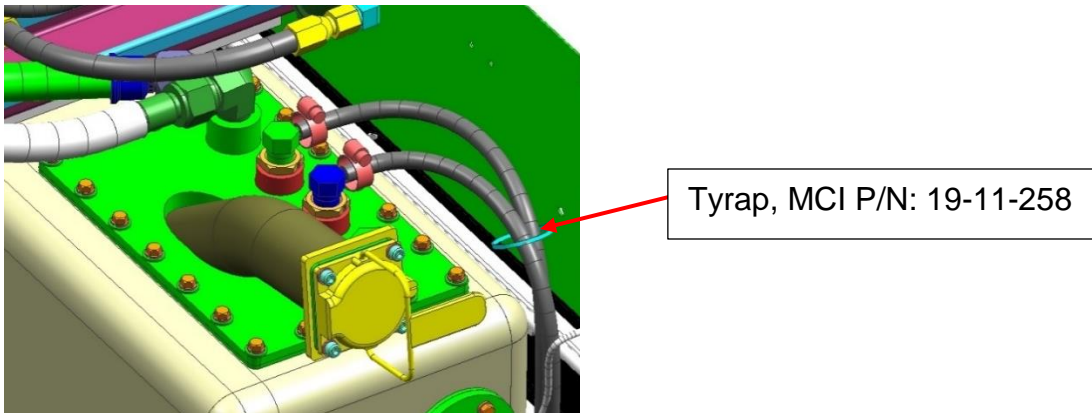


Routing of the hoses

Direct the hoses out through the holes at the bottom of the coach as shown below.



Using a tyrap, MCI P/N: 19-11-258, secure the two hoses at the location shown below.



Secure the fuel panel using the existing hardware.



**End of the procedure**