	GROUP FUE	MODEL 2019-2020MY Sedona (YP)
	NUMBER 042	DATE September 2019
TECHNICAL SERVICE BULLETIN		
SUBJECT: SERVICE ACTION: 3.3 GDI ULEV ECU MIL WITH DTC P0456 LOGIC IMPROVEMENT (SA397)		

This bulletin provides the procedure to improve the logic of the Engine Control Module (ECM) on some 2019-2020MY Sedona (YP) 3.3 GDI 8AT ULEV vehicles, produced from February 13, 2018 through August 27, 2019, which may exhibit an ECM MIL ON with DTC P0456. To correct this concern, apply the improved logic to the ECM using the KDS ECU Upgrade function as described in this bulletin. For confirmation that the latest reflash has been applied to a vehicle you are working on, verify the ROM ID using the table on page 2 of this bulletin. Before conducting the procedure, verify that the vehicle is included in the list of affected VINs.

DTC P0456: Evaporative Emission System – Leak Detected (Very Small Leak)



Kia Diagnostic System (KDS)

*** NOTICE**

A Service Action is a repair program without customer notification that is performed during the warranty period. Any dealer requesting to perform this repair outside the warranty period will require DPSM approval.

Repair status for a VIN is provided on WebDCS (Service → Warranty Coverage → Warranty Coverage Inquiry → Campaign Information). Not completed Recall / Service Action reports are available on WebDCS (Consumer Affairs → Not Completed Recall → Recall VIN → Select Report), which includes a list of affected vehicles.

This issue number is SA397.

File Under: <Fuel>

-
- Circulate To:** General Manager Service Manager Parts Manager
 Service Advisors Technicians Body Shop Manager Fleet Repair

SUBJECT:

SERVICE ACTION: 3.3 GDI ULEV ECU MIL WITH DTC P0456 LOGIC IMPROVEMENT (SA397)

ECU Upgrade Procedure:

To correct this condition, the ECU should be reprogrammed using the KDS download, as described in this bulletin.


Upgrade Event Name

432. YP PE LAMBDA 3.3GDI 8AT ULEV ECU MIL ON DTC (P0456) LOGIC IMPROVEMENT

* NOTICE

- A fully charged battery is necessary before ECU upgrade can take place. It is recommended that the Midtronics GR8-1299 be used in ECU mode during reflashing or the use of a fully charged jump starter box.
- DO NOT connect any other battery charger to the vehicle during ECU upgrade.
- Ensure the KDS or GDS is sufficiently charged prior to reflash.
- All ECU upgrades must be done with the ignition key in the 'ON' position.
- Be careful not to disconnect the VCI-II connected to the vehicle during the ECU upgrade procedure.
- DO NOT start the engine during ECU upgrade.
- Do NOT turn the ignition key 'OFF' or interrupt the power supply during ECU upgrade.
- When the ECU upgrade is completed, turn the ignition 'OFF' and wait 10 seconds before starting the engine.
- ONLY use approved ECU upgrade software designated for the correct model and model year.

* NOTICE

Before attempting an ECU upgrade on any Kia model, make sure to first determine whether the particular model is equipped with an immobilizer security system. Failure to follow proper procedures may cause the PCM to become inoperative after the upgrade and any claims associated with this repair may be subject to chargeback. 

ROM ID INFORMATION TABLE:

Upgrade Event #432

Model	EM	TM	MY	IMMO	ECU P/No.	ROM ID	
						Previous	New
YP	3.3GDI ULEV	8AT	19MY	Yes	39101 3LPN0	YPKN3GM F0A	YPKN3GM F0B
				No	39101 3LPN1	YPKN3GS F0A	YPKN3GS F0B
				Yes	39101 3LPN2	YPKN3GMP F0A	YPKN3GMP F0B
				No	39101 3LPN3	YPKN3GSP F0A	YPKN3GSP F0B
			20MY	Yes	39101 3LPN4	YPLN3GM J0A	YPLN3GM J0B
				No	39101 3LPN5	YPLN3GS J0A	YPLN3GS J0B
				Yes	39101 3LPN6	YPLN3GMP J0A	YPLN3GMP J0B
				No	39101 3LPN7	YPLN3GSP J0A	YPLN3GSP J0B

To verify the vehicle is affected, be sure to check the Calibration Identification of the vehicle's ECM ROM ID and reference the Information Table as necessary.

SUBJECT:

SERVICE ACTION: 3.3 GDI ULEV ECU MIL WITH DTC P0456 LOGIC IMPROVEMENT (SA397)

* NOTICE

Prior to performing the ECU upgrade, be sure to check that the KDS is fully charged.

1. Connect the VCI-II to the OBD-II connector, located under the driver's side of the instrument panel.

* NOTICE

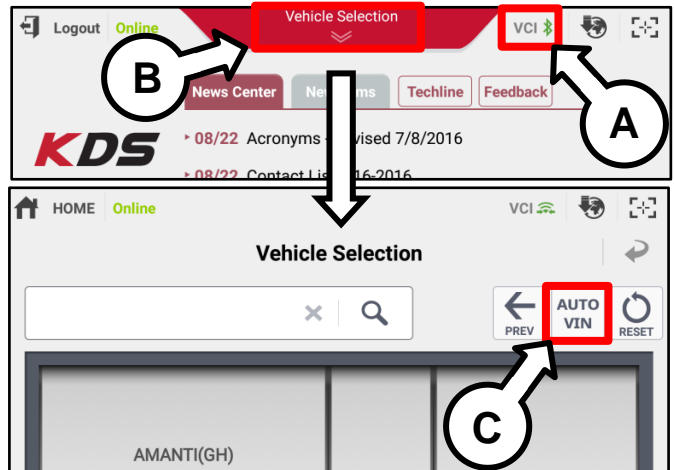
The ECU upgrade function on KDS operates wirelessly. It is not necessary to perform the upgrade via USB cable.



2. With the ignition ON, turn ON the KDS tablet. Select **KDS** from the home screen.

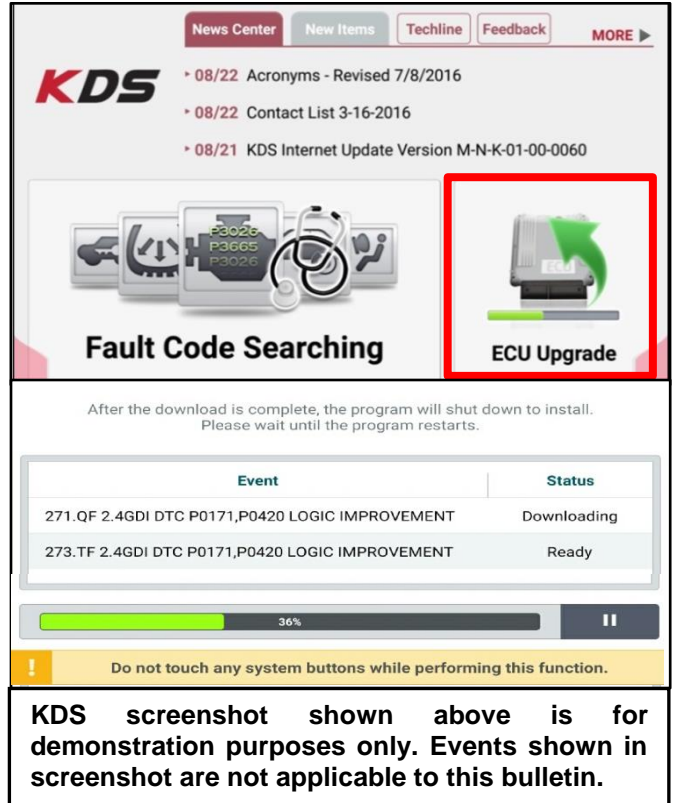


3. Confirm communication with VCI (A) and then configure the vehicle (B) using the **AUTO VIN** (C) feature.



SUBJECT: SERVICE ACTION: 3.3 GDI ULEV ECU MIL WITH DTC P0456 LOGIC IMPROVEMENT (SA397)

4. Select **ECU Upgrade**.

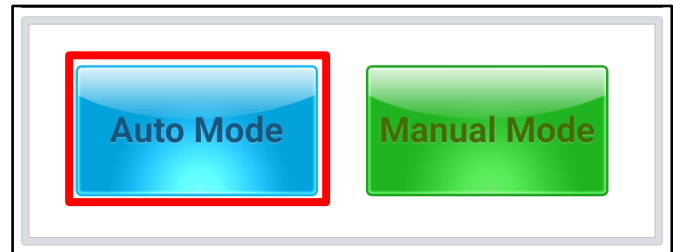


5. The KDS will check the server for recently uploaded Events and then automatically download **Upgrade Event #432**.

*** NOTICE**
 The vehicle must be identified in Vehicle Selection to download an Event for that vehicle.

6. Select **Auto Mode**.

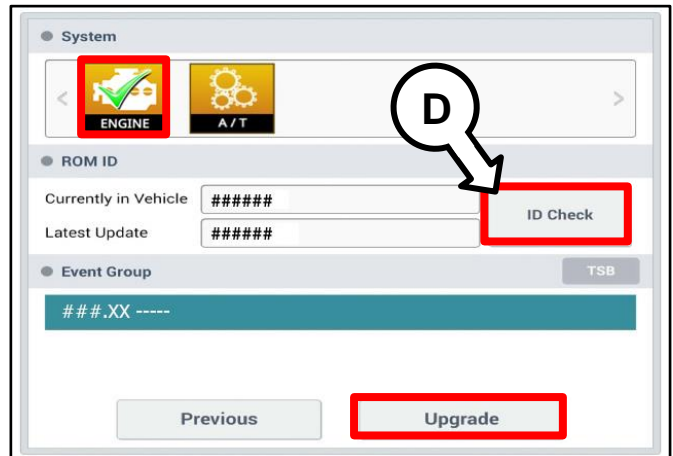
CAUTION
 Do NOT attempt to perform a Manual Mode upgrade UNLESS Auto Mode fails. Always follow the instructions given on the KDS in either Auto or Manual mode.



7. Select the **ENGINE** system under the System selection menu.

Touch **ID Check (D)** and confirm that the latest update is available.

Select **Upgrade Event #432** and select **Upgrade** to continue.



SUBJECT:

SERVICE ACTION: 3.3 GDI ULEV ECU MIL WITH DTC P0456 LOGIC IMPROVEMENT (SA397)

8. The ECU upgrade will begin and the progress of the upgrade will appear on the bar graph. Upgrade part (1/2) (E) will download the upgrade event to the VCI-II. Upgrade part (2/2) (F) will upgrade the ECU.



CAUTION

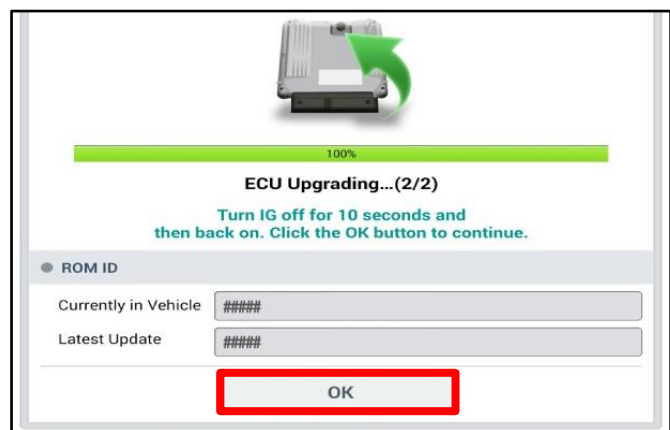
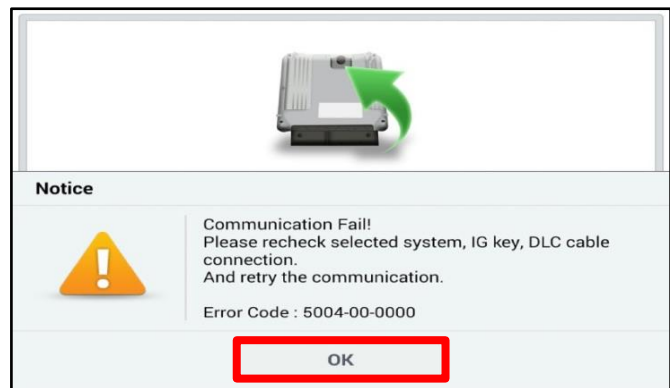
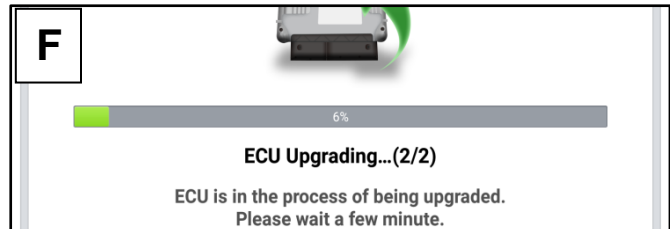
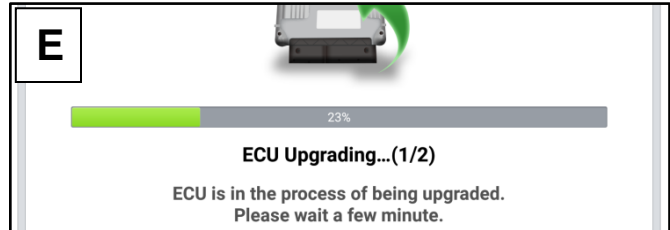
Do not touch the system buttons (like 'Back', 'Home', 'etc.') while performing ECU Upgrade.

9. If a "Communication Fail" screen appears, verify that the VCI-II and KDS are communicating properly. Touch **OK** and restart the procedure from step 4.

* NOTICE

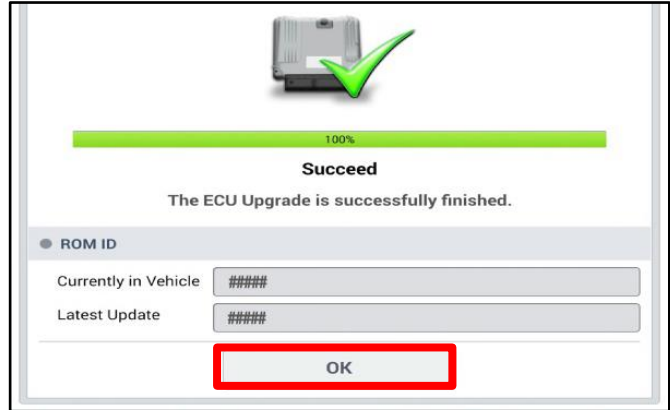
If an error notice continues to appear or if the upgrade cannot be performed, **DO NOT** disconnect the KDS/VCI-II. Contact GIT America Help Desk at (888) 542-4371 or Techline.

10. When instructed on the KDS, turn the ignition **OFF** for ten (10) seconds then back on. Touch **OK** to continue.



SUBJECT: SERVICE ACTION: 3.3 GDI ULEV ECU MIL WITH DTC P0456 LOGIC IMPROVEMENT (SA397)

- 11. Once the upgrade is complete, touch **OK** to finalize the procedure.



- 12. When prompted, select **YES** to check for Diagnostic Trouble Codes (DTC) and erase any DTCs stored such as EPS, ESC, and TPMS that may have been set during the upgrade.



- 13. Start the engine to confirm proper operation of the vehicle.

SUBJECT:

SERVICE ACTION: 3.3 GDI ULEV ECU MIL WITH DTC P0456 LOGIC IMPROVEMENT (SA397)

Manual Upgrade Procedure:

★ NOTICE

The manual upgrade should **ONLY** be performed if the automatic upgrade fails.

If the automatic upgrade fails, turn the ignition **OFF** for about 10 seconds then place it back in the **ON** position to reset the control unit **BEFORE** performing manual upgrade.

See table below for Manual Mode passwords.

Manual Mode ECU Upgrade Passwords

Menu	Password
YP PE LAMBDA 3.3GDI 8AT ULEV -IMMO (19MY) : 39101-3LPN1	0131
YP PE LAMBDA 3.3GDI 8AT ULEV +IMMO/SMK (19MY) : 39101-3LPN0	0130
YP PE LAMBDA 3.3GDI 8AT ULEV -IMMO (19MY) : 39101-3LPN3	0133
YP PE LAMBDA 3.3GDI 8AT ULEV +IMMO/SMK (19MY) : 39101-3LPN2	0132
YP PE LAMBDA 3.3GDI 8AT ULEV -IMMO (20MY) : 39101-3LPN5	0135
YP PE LAMBDA 3.3GDI 8AT ULEV +IMMO/SMK (20MY) : 39101-3LPN4	0134
YP PE LAMBDA 3.3GDI 8AT ULEV -IMMO (20MY) : 39101-3LPN7	0137
YP PE LAMBDA 3.3GDI 8AT ULEV +IMMO/SMK (20MY) : 39101-3LPN6	0136

1. Within the ECU Upgrade screen displayed, select **Manual Mode**.
2. Select the ECM system under the System selection menu. Select **Upgrade Event #432** and select **Upgrade** to continue.
3. Select the appropriate control unit part number with reference to the ROM ID Information Table on page 2, and select **OK**.
4. Enter the appropriate password from the Manual Mode password table above and select **OK**.
5. The upgrade will begin and the progress of the upgrade will appear on the bar graph.
6. When instructed on the KDS, turn the ignition **OFF** for ten (10) seconds then back on. Touch **OK** to continue.
7. Once the upgrade is complete, touch **OK** to finalize the procedure.
8. When prompted, select **YES** to check for Diagnostic Trouble Codes (DTC) and erase any DTCs stored such as EPS, ESC, and TPMS that may have been set during the upgrade.
9. Start the engine to confirm proper operation of the vehicle.

SUBJECT:

**SERVICE ACTION: 3.3 GDI ULEV ECU MIL WITH
DTC P0456 LOGIC IMPROVEMENT (SA397)**

AFFECTED VEHICLE RANGE:

Model	Production Date Range
Sedona (YP)	February 13, 2018 through August 27, 2019

WARRANTY INFORMATION:

N Code: N99 C Code: C99

Claim Type	Causal P/N	Qty.	Repair Description	Labor Op Code	Op Time	Replacement P/N	Qty.
V	39101 3LPN0	0	(SA397) YP PE LAMBDA 3.3 GDI 8AT ULEV ECU MIL ON DTC P0456 Logic Improvement	190108R0	0.3 M/H	N/A	0

*** NOTICE**

VIN inquiry data for this repair is provided for tracking purposes only. Kia retailers should reference SA397 when accessing the WebDCS system.