

FLA COE
FLB COE
FLD Conventional
Business Class
FLC 112 Conventional

Century Class Conventional
Argosy
Cargo
Columbia

122SD and Coronado
> Business Class M2
Cascadia
> 108SD/114SD

**Freightliner
Service Bulletin**

Description of Revisions: *This bulletin replaces the version dated 01/01/2016. The bulletin has been changed to include installation of an air intake seal at the turbocharger inlet for M2 106 vehicles with ISL engines, and 108SD vehicles with L9 engines. [Table 4](#) is added to show this seal part number.*

General Information

The following recommendations apply to vehicles used in dusty environments:

- For 114SD vehicles equipped with either a 03-38644-000 or 03-38644-001 air cleaner, replace the air cleaner assembly. See [Table 1](#).
- For certain 114SD vehicles, replace the metal safety screen with a pleated safety element. See [Table 2](#).
- For 108SD, 114SD, M2 106, and M2 112 vehicles with air ducts specified in [Table 3](#), install an additional seal at the outlet of the air cleaner.
- For M2 106 with ISL engines equipped with air duct 03-37521-000, and 108SD with L9 engines equipped with air duct 03-37520-000, install an additional seal at the turbocharger inlet. See [Table 4](#).

These modifications will improve the sealing quality of the air cleaner and help prevent dust from entering the engine. Detailed information is provided below.

Parts

NOTE: Part numbers are listed in PartsPro. See module 190 for air cleaners and module 189 for air ducts.

Part Number	Description
03-42321-001	Air Cleaner Assembly
NOTE: This air cleaner is for 114SD vehicles that are equipped with either air cleaner 03-38644-000 or 03-38644-001.	

Table 1, Air Cleaner (for 114SD vehicles)

Part Number	Description
DN P547520	Pleated Safety Element
NOTE: The pleated safety element is part of air cleaner 03-42321-001 (see Table 1).	

Table 2, Pleated Safety Element (for 114SD vehicles)

Part Number	Description	
03-35087-002	Air Intake Seal, 6 inch	
NOTE: This seal applies to 108SD, 114SD, and M2 106 and 112 vehicles equipped with one of the following air ducts:		
• 03-37483-000	• 03-37521-000	• 03-39069-000
• 03-37486-000	• 03-38645-000	• 03-39070-000
• 03-37520-000		

Table 3, Air Intake Seal, 6 inch (108SD, 114SD, and M2 vehicles)

Freightliner Service Bulletin

FLA COE
 FLB COE
 FLD Conventional
 Business Class
 FLC 112 Conventional

Century Class Conventional
 Argosy
 Cargo
 Columbia

122SD and Coronado
 > Business Class M2
 Cascadia
 > 108SD/114SD

Part Number	Description
03-35087-000	Air Intake Seal, 3.5 inch
NOTE: This seal applies to M2 106 with ISL engines equipped with air duct 03-37521-000, and 108SD with L9 engines equipped with air duct 03-37520-000.	

Table 4, Air Intake Seal, 3.5 inch (for M2 106 vehicles with ISL engines Only)

Air Cleaner Replacement (Qualifying 114SD Vehicles Only)

For 114SD vehicles equipped with either air cleaner 03-38644-000 or 03-38644-001, replace the air cleaner with a 03-42321-001 unit, as follows.

1. Park the vehicle on a level surface, shut down the engine, and set the parking brake. Chock the tires.
2. Loosen the clamps at the air cleaner assembly and turbocharger, and remove the air intake duct. See [Fig. 1](#).
3. Remove the air cleaner assembly and mounting bracket (together) from the vehicle.
4. Remove the air cleaner assembly from the mounting bracket.
5. Install a new air cleaner assembly on the mounting bracket, and tighten the fasteners 11 to 13 lbf-ft (15 to 18 N·m).
6. Install the air cleaner assembly and mounting bracket together on the vehicle, and tighten the fasteners 11 to 13 lbf-ft (15 to 18 N·m).
7. Wipe clean the inside and outside of the duct, and install it on the vehicle. Tighten the clamp at the turbocharger 90 lbf-in (1020 N·cm) and the clamp at the air cleaner 40 lbf-in (450 N·cm).

FLA COE
FLB COE
FLD Conventional
Business Class
FLC 112 Conventional

Century Class Conventional
Argosy
Cargo
Columbia

122SD and Coronado
> Business Class M2
Cascadia
> 108SD/114SD

Freightliner
Service Bulletin

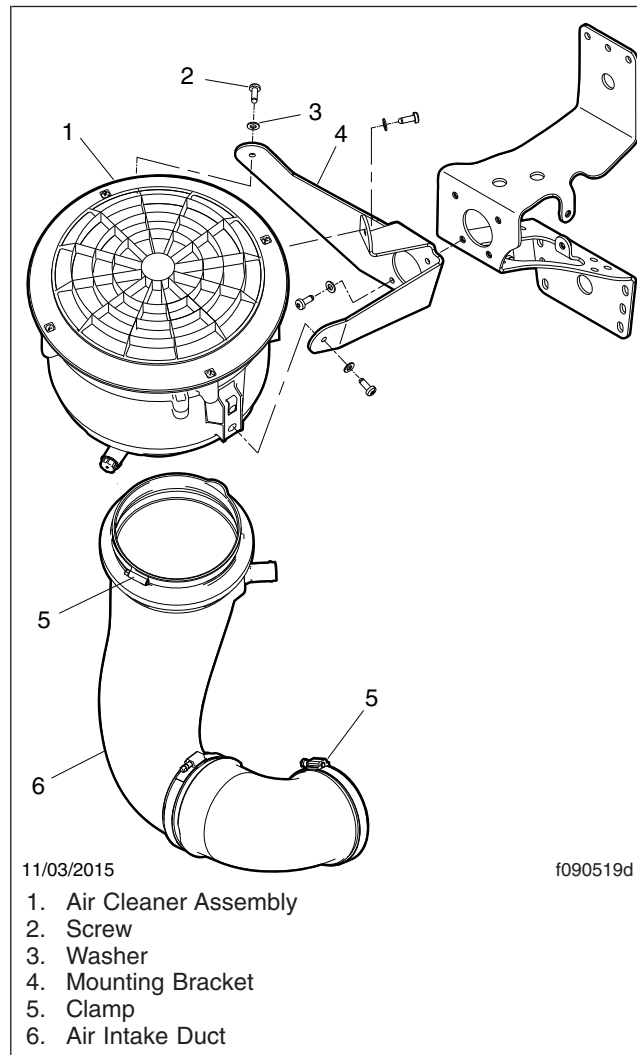


Fig. 1, Air Cleaner Assembly Installation

Safety Element Replacement (114SD Vehicles Only)

For 114SD vehicles, replace the metal safety screen with a pleated safety element (see [Table 2](#)), as follows.

NOTE: Vehicles equipped with air cleaner 03-42321-001 do not need to have the safety element replaced (it is included in air cleaner 03-42321-001).

1. Park the vehicle on a level surface, shut down the engine, and set the parking brake. Chock the tires.
2. Loosen the clamps at the air cleaner assembly and turbocharger, and remove the air intake duct. See [Fig. 1](#).
3. Remove the primary air cleaner element from the air cleaner housing. See [Fig. 2](#).

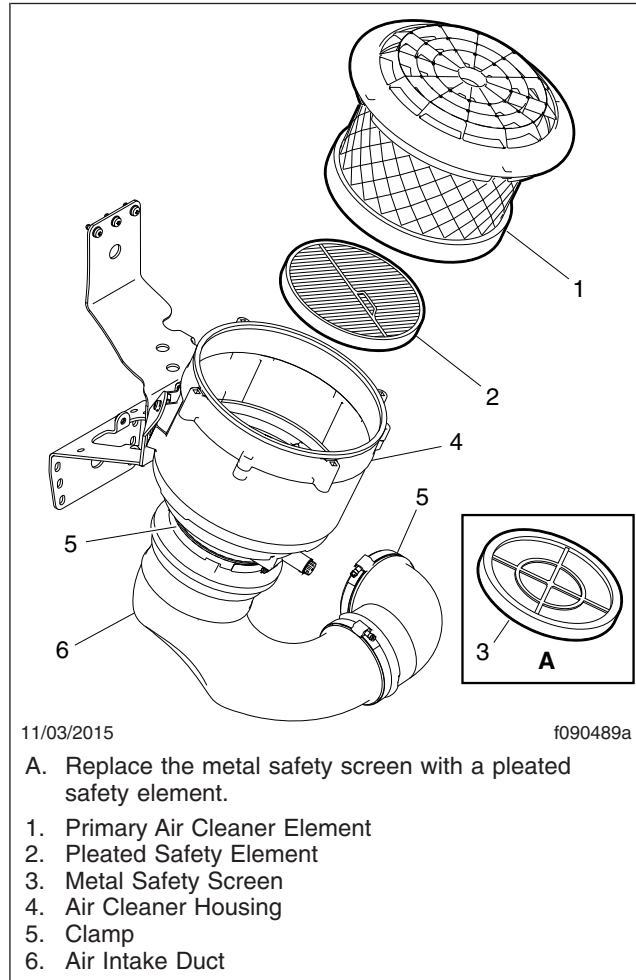


Fig. 2, Replacing the Metal Screen with a Safety Element

4. Remove the metal safety screen from the air cleaner housing.
5. Clean the housing surface.
6. Install a new pleated safety element in the air cleaner housing. See [Table 2](#) and [Fig. 2](#).

NOTE: The pleated safety element should be changed each time the primary filter element is changed. See the vehicle workshop manual for instructions.

7. Install the filter element and tighten the capscrews 25 to 35 lbf-in (285 to 395 N-cm).

Air Intake Seal Installation (108SD, 114SD, and M2 106 and 112 Vehicles)

For 108SD, 114SD, and M2 106 and 112 vehicles equipped with one of the air ducts listed in [Table 3](#), install seal 03-35087-002 at the air cleaner outlet.

FLA COE
FLB COE
FLD Conventional
Business Class
FLC 112 Conventional

Century Class Conventional
Argosy
Cargo
Columbia

122SD and Coronado
> Business Class M2
Cascadia
> 108SD/114SD

**Freightliner
Service Bulletin**

For M2 106 with ISL engines equipped with air duct 03-37521-000, and 108SD with L9 engines equipped with air duct 03-37520-000, install seal 03-35087-000 at the turbocharger inlet.

1. Park the vehicle on a level surface, shut down the engine, and set the parking brake. Chock the tires.
2. Loosen the clamps at the air cleaner assembly and turbocharger, and remove the air intake duct. See [Fig.1](#).
3. Install seal 03-35087-002 on the air cleaner outlet as shown in [Fig. 3](#).

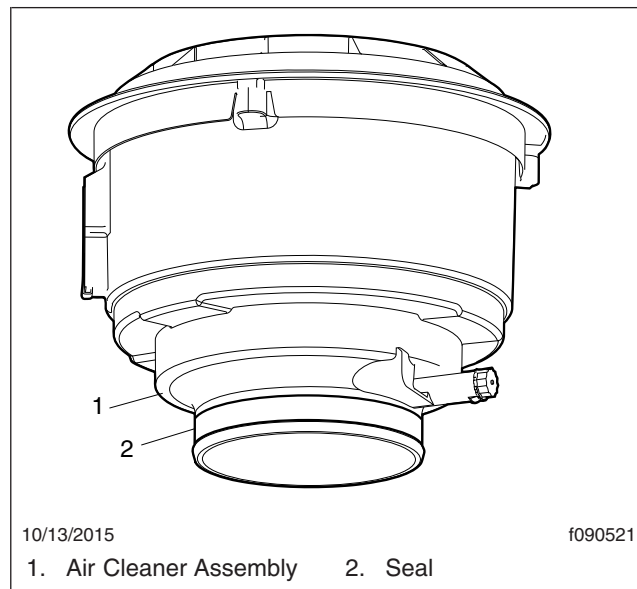


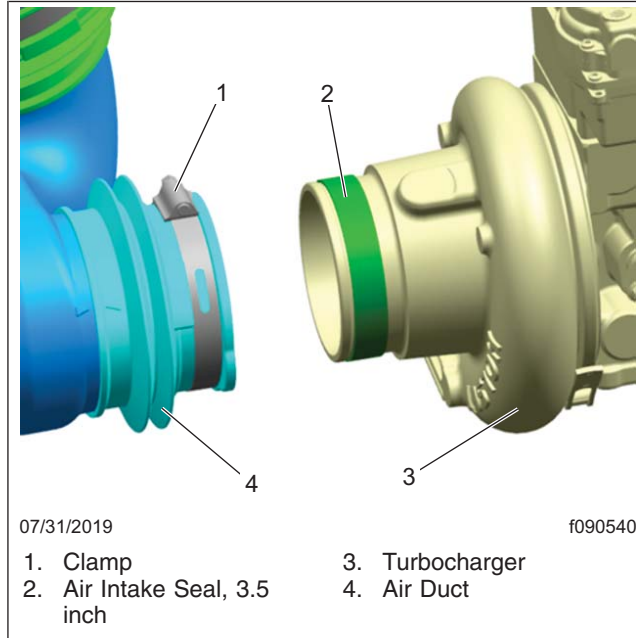
Fig. 3, Assembly, Air Intake Seal and Housing

4. For M2 106 with ISL engines, and 108SD with L9 engines, install seal 03-35087-000 on the turbocharger inlet. See [Fig. 4](#).

FLA COE
FLB COE
FLD Conventional
Business Class
FLC 112 Conventional

Century Class Conventional
Argosy
Cargo
Columbia

122SD and Coronado
> Business Class M2
Cascadia
> 108SD/114SD



**Fig. 4, Installation, Air Intake Seal and Turbocharger
(for M2 106 with ISL Engines only)**

5. Apply P-80® Emulsion (or an equivalent lubricant) to the seals, the base of the air cleaner housing (See [Fig. 5](#)) and the turbocharger inlet (See [Fig. 4](#)).

FLA COE
FLB COE
FLD Conventional
Business Class
FLC 112 Conventional

Century Class Conventional
Argosy
Cargo
Columbia

122SD and Coronado
> Business Class M2
Cascadia
> 108SD/114SD

**Freightliner
Service Bulletin**

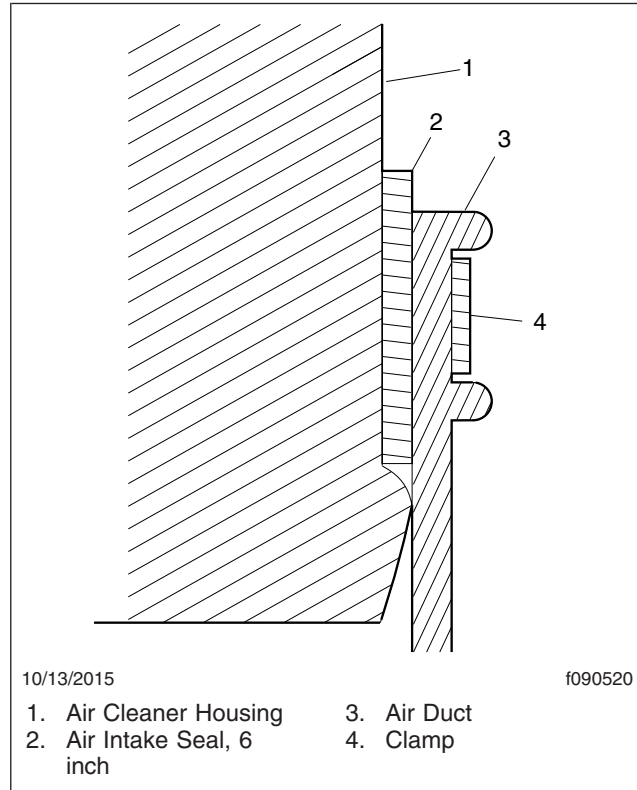


Fig. 5, Installation, Air Intake Seal and Housing

6. Wipe clean the inside and outside of the duct, and install it. Tighten the clamp at the turbocharger 90 lbf-in (1020 N·cm) and the clamp at the air cleaner 40 lbf-in (450 N·cm).

Warranty

This bulletin is informational only. Warranty does not apply.