



Subject: AUTO A/C BLOWS WARM AIR	Bulletin No.: 07-006/19
	Last Issued: 09/11/2019

APPLICABLE MODEL(S)/VINS

- 2019 Mazda3 (Japan built) vehicles with VINs lower than JM1BP*****126602 (produced before June 19, 2019)
- 2019 Mazda3 (Mexico built) vehicles with VINs lower than 3MZBP*****114595 (produced before June 19, 2019)

DESCRIPTION

Some customers may experience that after starting the engine, the auto A/C blows warm air for about 10 minutes and then blows cool air as desired. This concern occurs when the ambient temperature is within a certain range (approx. 16-25 C / 61-77 F).

This is caused by the control software of the Dash-Electrical Supply Unit (Dash-ESU) not being appropriate for this specific situation. To correct this concern, the control software of the Dash-ESU has been modified.

Customers having this concern should have their vehicle repaired using the following troubleshooting tables and repair procedure.

REPAIR PROCEDURE

1. Verify customer concern.
2. Reprogram the Dash-ESU using the Mazda Diagnostic And Repair Software (MDARS). Refer to "MDARS - ECU Reprogramming Procedure".

NOTE:

- If the current calibration file name on the ECU FILENAME screen is the same as **BDGF-66S11-J** or with a later suffix, reprogramming is not necessary.
- After reprogramming, pending DTC P2610:00 [PCM] will be stored without the Check Engine Light ON. Start the engine and clear the DTC.
- After reprogramming, if DTC U2120:00 and/or U2500:82 are stored and the i-ACTIVSENSE warning light (amber) turns ON, refer to SA-036/19.

CONSUMER NOTICE: The information and instructions in this bulletin are intended for use by skilled technicians. Mazda technicians utilize the proper tools/equipment and take training to correctly and safely maintain Mazda vehicles. These instructions should not be performed by "do-it-yourselfers." Customers should not assume this bulletin applies to their vehicle or that their vehicle will develop the described concern. To determine if the information applies, customers should contact their nearest authorized Mazda dealership. Mazda North American Operations reserves the right to alter the specifications and contents of this bulletin without obligation or advance notice. All rights reserved. No part of this bulletin may be reproduced in any form or by any means, electronic or mechanical---including photocopying and recording and the use of any kind of information storage and retrieval system ---without permission in writing.

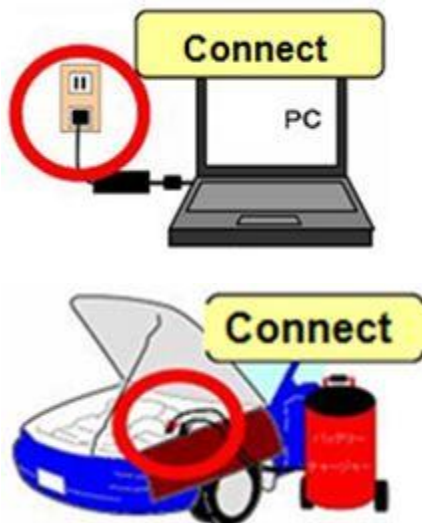
3. Verify the repair.

MDARS ECU Reprogramming Procedure

ATTENTION: READ ALL CAUTIONS AND NOTES BEFORE AND AFTER REPROGRAMMING!

CAUTION:

- **A poor connection between the vehicle and M-MDS and/or low voltage may result in abnormal termination and/or data corruption. A low battery voltage may cause a reprogramming failure resulting in unexpected ECU replacement.**
- **Make sure that the following connections are firmly connected, then DO NOT touch the VCM and DLC cable to prevent noise and a poor connection.**
 - **Between the vehicle-side connector and the DLC cable**
 - **Between the PC-side connector and the USB port of the PC**
- **When reprogramming with MDARS, power consumption and voltage fluctuation are greater than with IDS. Use the Power Supply mode in the Battery Management System (GR8) and connect an AC adapter to the PC to stabilize voltage fluctuation.**



BEFORE REPROGRAMMING

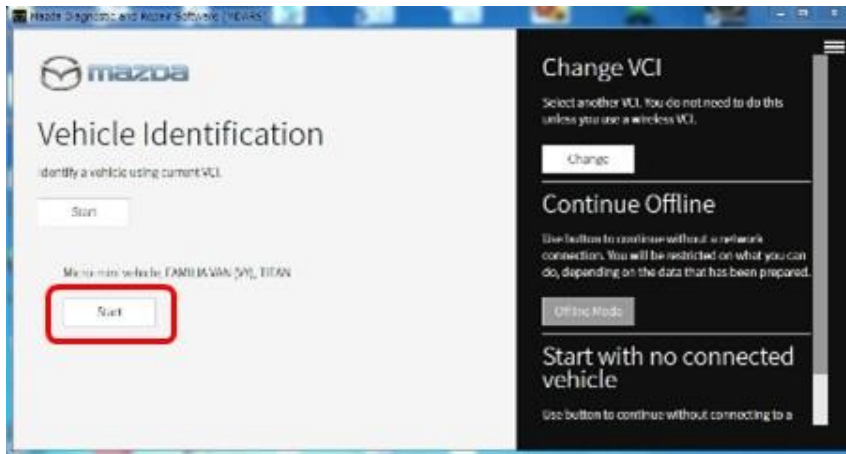
NOTE:

- **Turn off all electrical loads (i.e. A/C blower, audio system, rear defogger and headlights).**
- **Perform a self-test and verify no DTCs are stored. If any DTCs are stored, repair the concern and delete the DTCs.**
- **Disconnect any aftermarket accessories (non-genuine Mazda accessories).**
- **Terminate all programs other than MDARS on the PC. Running other programs may interfere with the MDARS performance, resulting in the PC freezing or other problems.**

CONSUMER NOTICE: The information and instructions in this bulletin are intended for use by skilled technicians. Mazda technicians utilize the proper tools/equipment and take training to correctly and safely maintain Mazda vehicles. These instructions should not be performed by "do-it-yourselfers." Customers should not assume this bulletin applies to their vehicle or that their vehicle will develop the described concern. To determine if the information applies, customers should contact their nearest authorized Mazda dealership. Mazda North American Operations reserves the right to alter the specifications and contents of this bulletin without obligation or advance notice. All rights reserved. No part of this bulletin may be reproduced in any form or by any means, electronic or mechanical---including photocopying and recording and the use of any kind of information storage and retrieval system ---without permission in writing.

- Perform reprogramming with a proper internet connection. When using a wireless network, make sure the connection is strong.
- Make sure to keep enough free space on the PC's hard disc. Insufficient free space (less than 1 GB) may result in the PC freezing during reprogramming.

1. Connect the M-MDS to the vehicle.
2. Launch the Mazda Diagnostic And Repair Software (MDARS).
3. Turn the ignition on, then click "Start".

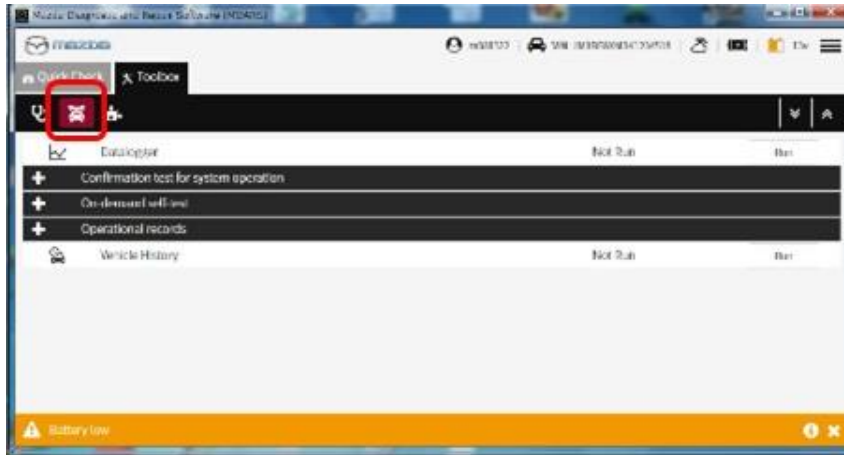


4. Select the "toolbox" tab.



CONSUMER NOTICE: The information and instructions in this bulletin are intended for use by skilled technicians. Mazda technicians utilize the proper tools/equipment and take training to correctly and safely maintain Mazda vehicles. These instructions should not be performed by "do-it-yourselfers." Customers should not assume this bulletin applies to their vehicle or that their vehicle will develop the described concern. To determine if the information applies, customers should contact their nearest authorized Mazda dealership. Mazda North American Operations reserves the right to alter the specifications and contents of this bulletin without obligation or advance notice. All rights reserved. No part of this bulletin may be reproduced in any form or by any means, electronic or mechanical---including photocopying and recording and the use of any kind of information storage and retrieval system ---without permission in writing.

5. Select Work Support group.

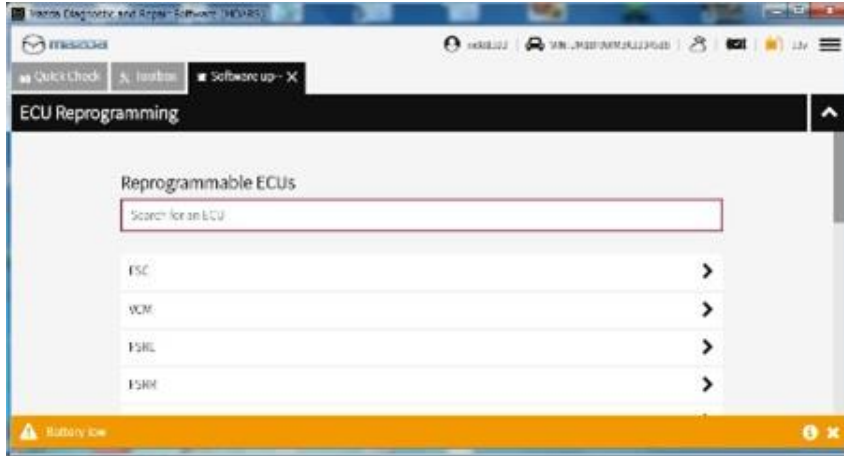


6. Select "Software update", then click "Run".

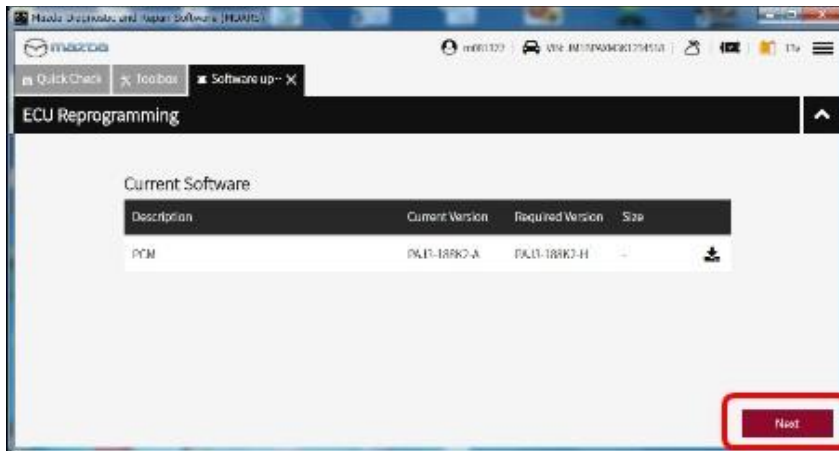


CONSUMER NOTICE: The information and instructions in this bulletin are intended for use by skilled technicians. Mazda technicians utilize the proper tools/equipment and take training to correctly and safely maintain Mazda vehicles. These instructions should not be performed by "do-it-yourselfers." Customers should not assume this bulletin applies to their vehicle or that their vehicle will develop the described concern. To determine if the information applies, customers should contact their nearest authorized Mazda dealership. Mazda North American Operations reserves the right to alter the specifications and contents of this bulletin without obligation or advance notice. All rights reserved. No part of this bulletin may be reproduced in any form or by any means, electronic or mechanical---including photocopying and recording and the use of any kind of information storage and retrieval system ---without permission in writing.

7. Select the ECU to be reprogrammed.



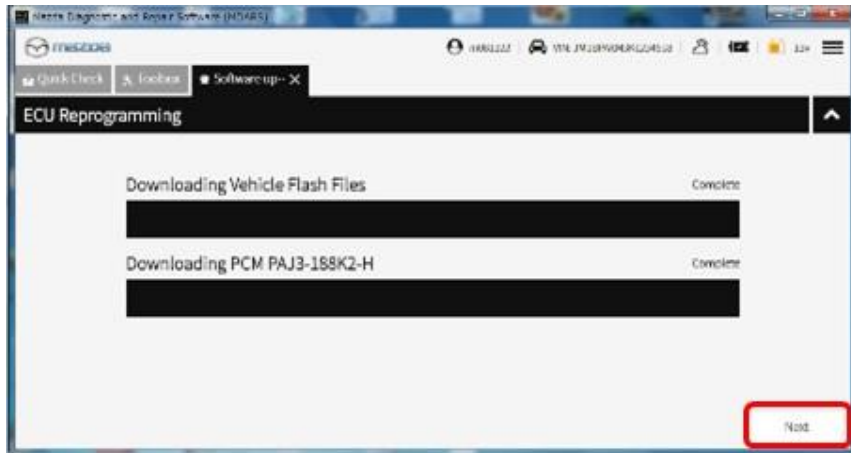
8. Confirm the current and new software versions, then click "Next".
NOTE: When reprogramming the BCM, two softwares will be shown.



CONSUMER NOTICE: The information and instructions in this bulletin are intended for use by skilled technicians. Mazda technicians utilize the proper tools/equipment and take training to correctly and safely maintain Mazda vehicles. These instructions should not be performed by "do-it-yourselfers." Customers should not assume this bulletin applies to their vehicle or that their vehicle will develop the described concern. To determine if the information applies, customers should contact their nearest authorized Mazda dealership. Mazda North American Operations reserves the right to alter the specifications and contents of this bulletin without obligation or advance notice. All rights reserved. No part of this bulletin may be reproduced in any form or by any means, electronic or mechanical---including photocopying and recording and the use of any kind of information storage and retrieval system ---without permission in writing.

9. Wait for the download, then click “Next”.

NOTE: When reprogramming the BCM, downloading will occur twice.

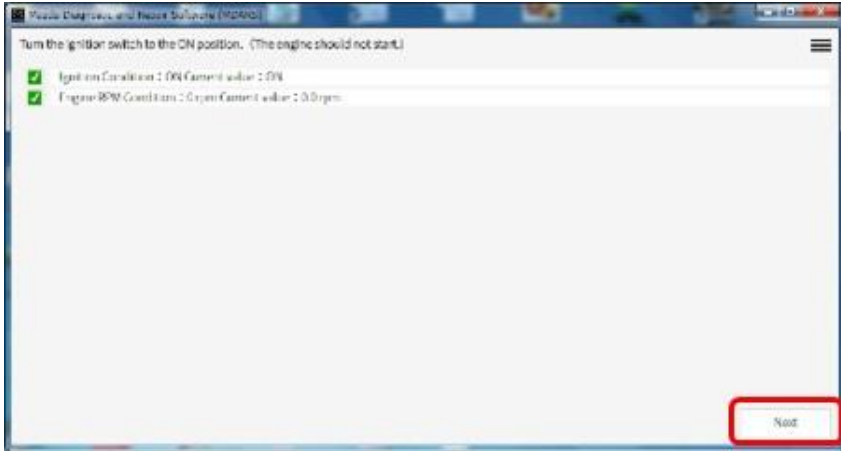


10. Read the screen instructions, then click “Next”.



CONSUMER NOTICE: The information and instructions in this bulletin are intended for use by skilled technicians. Mazda technicians utilize the proper tools/equipment and take training to correctly and safely maintain Mazda vehicles. These instructions should not be performed by “do-it-yourselfers.” Customers should not assume this bulletin applies to their vehicle or that their vehicle will develop the described concern. To determine if the information applies, customers should contact their nearest authorized Mazda dealership. Mazda North American Operations reserves the right to alter the specifications and contents of this bulletin without obligation or advance notice. All rights reserved. No part of this bulletin may be reproduced in any form or by any means, electronic or mechanical—including photocopying and recording and the use of any kind of information storage and retrieval system ---without permission in writing.

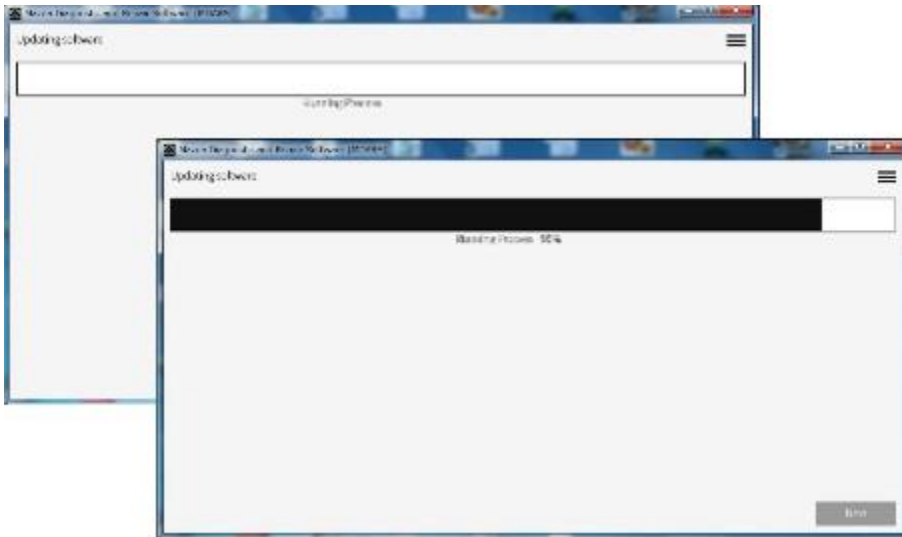
11. Follow the instructions on the screen, then click “Next”.



12. Wait for the reprogramming to complete.

NOTE:

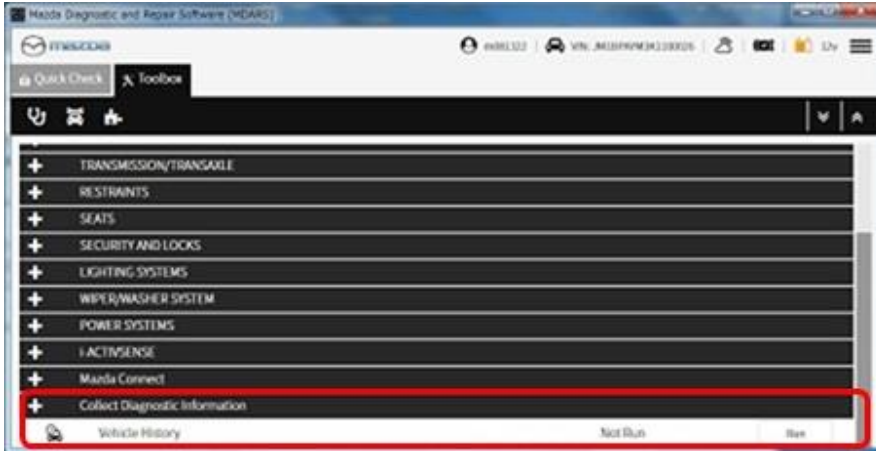
- The progress bar will stay at 90% for 30 seconds. This is not a failure.
- When reprogramming the BCM, this process will occur twice.



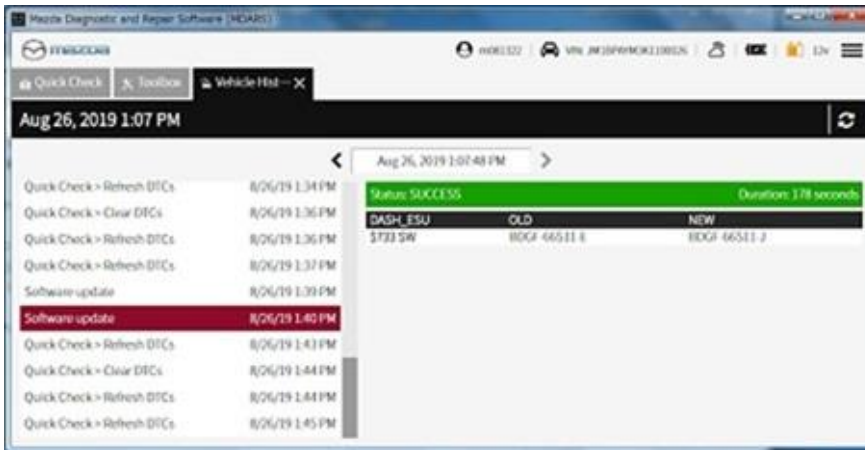
CONSUMER NOTICE: The information and instructions in this bulletin are intended for use by skilled technicians. Mazda technicians utilize the proper tools/equipment and take training to correctly and safely maintain Mazda vehicles. These instructions should not be performed by “do-it-yourselfers.” Customers should not assume this bulletin applies to their vehicle or that their vehicle will develop the described concern. To determine if the information applies, customers should contact their nearest authorized Mazda dealership. Mazda North American Operations reserves the right to alter the specifications and contents of this bulletin without obligation or advance notice. All rights reserved. No part of this bulletin may be reproduced in any form or by any means, electronic or mechanical---including photocopying and recording and the use of any kind of information storage and retrieval system ---without permission in writing.

AFTER REPROGRAMMING NOTE:

- Select "Vehicle History" under "Collect Diagnostic Information", then click "Run".



- Confirm the reprogramming on the screen and save the screen copy as a record.



CONSUMER NOTICE: The information and instructions in this bulletin are intended for use by skilled technicians. Mazda technicians utilize the proper tools/equipment and take training to correctly and safely maintain Mazda vehicles. These instructions should not be performed by "do-it-yourselfers." Customers should not assume this bulletin applies to their vehicle or that their vehicle will develop the described concern. To determine if the information applies, customers should contact their nearest authorized Mazda dealership. Mazda North American Operations reserves the right to alter the specifications and contents of this bulletin without obligation or advance notice. All rights reserved. No part of this bulletin may be reproduced in any form or by any means, electronic or mechanical---including photocopying and recording and the use of any kind of information storage and retrieval system ---without permission in writing.

WARRANTY INFORMATION

NOTE:

- This warranty information applies only to verified customer complaints on vehicles eligible for warranty repair.
- This repair will be covered under Mazda's New Vehicle Limited Warranty.
- Additional diagnostic time cannot be claimed for this repair.

Warranty Type	A
Symptom Code	60
Damage Code	9W
Part Number Main Cause	5555-61-590
Quantity	0
Operation Number / Labor Hours:	XXR99XFX / 0.2 Hrs.

After reprogramming, be sure to keep the copy of the ECU FILENAME screen on M-MDS along with the repair order and warranty application sheet.

CONSUMER NOTICE: The information and instructions in this bulletin are intended for use by skilled technicians. Mazda technicians utilize the proper tools/equipment and take training to correctly and safely maintain Mazda vehicles. These instructions should not be performed by "do-it-yourselfers." Customers should not assume this bulletin applies to their vehicle or that their vehicle will develop the described concern. To determine if the information applies, customers should contact their nearest authorized Mazda dealership. Mazda North American Operations reserves the right to alter the specifications and contents of this bulletin without obligation or advance notice. All rights reserved. No part of this bulletin may be reproduced in any form or by any means, electronic or mechanical---including photocopying and recording and the use of any kind of information storage and retrieval system ---without permission in writing.