



SIB 52 19 19

SECOND ROW 60/40 PASSENGERS SIDE SEAT INTERMITTENTLY
WON'T LATCH

2019-08-05

MODEL

Engineering Designation	Model Description	Production Date	Affected Option Code
G05	X5 Sports Activity Vehicle	Vehicles from June 24, 2019 to October 1, 2019	Equipped with the standard equipment second row 60/40 seats.
G07	X7 SAV		

SITUATION

The passenger's side (right rear) of the 60/40 split 2nd row seat may intermittently not fully latch into position on one side (inner rail).



Note: For the same issue on the Driver's side 60% (left rear) of the 60/40 split 2nd

row seat, refer to the companion service bulletin [SI B52 04 19](#).

CAUSE

Manufacturing tolerances of the seat assembly produced between mid-July (Calendar week 26) and early October (CW40) of 2019.

- A seat frame production change was made in CW26
- A single washer is planned to be installed on the inner rail of the passenger second row seat in CW 40

CORRECTION



As of CW40 production, one machined washer (shown) will be added to the bottom of the inner seat rail on the passenger's side (right rear) of the 60/40 split 2nd row seat.

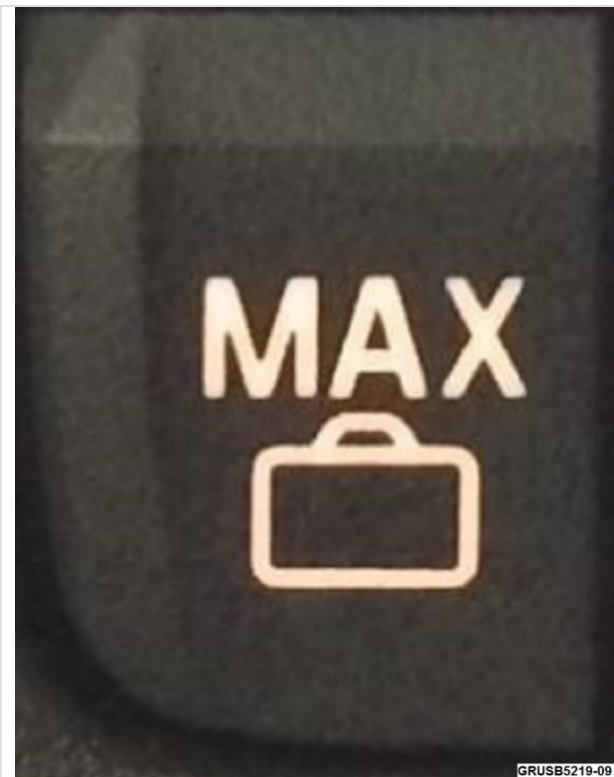
For vehicles with this specific complaint that were produced from June 24, 2019 thru October 1, 2019, a comparable correction is to add a single 2mm thick flat washer in this location.

The washer must have-

- 15mm inner diameter hole for the bolt fitment
- Outside diameter must be at least 30mm

PROCEDURE

1. Precondition – Ensure all seats are properly initialized.



A quick test to see if they are initialized (if equipped with third row power seats) is-

- Access the rear switches in the D pillar area
- Push the button for maximum cargo space



- Alternatively, push this button for maximum seating.
- Intended result: All 2nd and 3rd row seats should move

2. If the seats are not initialized, use-

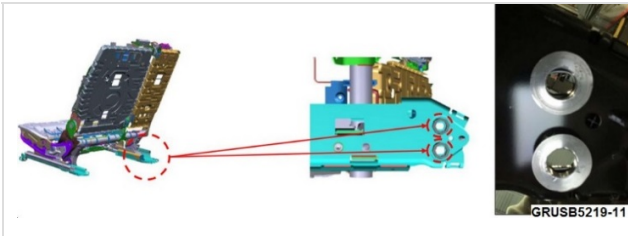
- ISTA Service Functions, Seats, Seat adjustment standardization
- Select the appropriate test plan for initialization

3. Remove all seat rail plastic covers on the passenger's side (right rear) of the 60/40 split 2nd row seat.

4. Loosen all seat rail fasteners/bolts on the passenger's side (right rear) of the 60/40 split 2nd row seat.

- Only the one bolt on the inner rail at the rear must be removed. All other mounting bolts can be loosened but left in place.

5. Move the seat an inch or two forward with the power adjustment, then rearward. You may hear a seat clicking noise due to loose fasteners.



6. Install 1 flat 2 mm thick washer under rear of inner rail of the 40% structure.

Washer is installed between the floor of vehicle and the rear of the inner seat rail.

- Only install a washer at the specified location.
- The 60% seat is not affected by this repair.



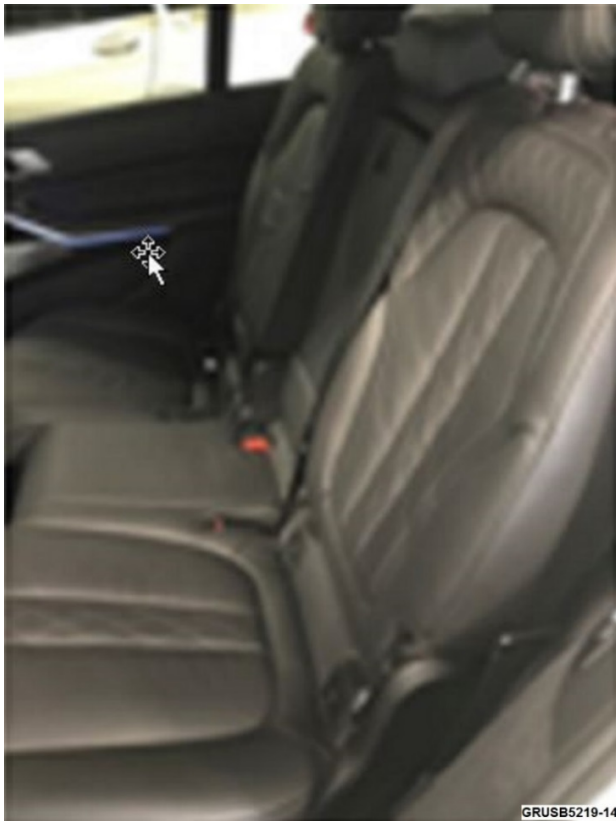
7. Move the 60/40 seats over the entire length of their travel.

- Move seats fully forward, then fully rearward

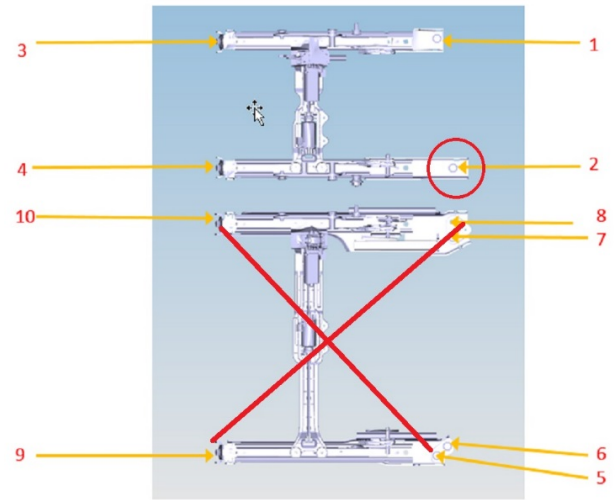


8. Check the easy entry function (switch circled).

9. Relatch the seats and move them fully rearward.



10. Move the seat only as far forward as necessary to reach the rear inner rail and fasteners.
- Seat must ***NOT*** be in easy entry position during the fastener torquing.
 - Seat must ***NOT*** be fully forward when torquing the fasteners



Note: Only install the 1 washer at the specified location 2 (circled).

- Locations 5 thru 10 pertain to the 60% 2nd row seat which is not affected by this repair.

11. Tighten all fasteners to 42Nm following the torque sequences #1 thru 4.

12. Perform a function check on both seats.

13. Re-install all seat rail plastic covers.

PARTS INFORMATION

Part Number	Description	Quantity
NPN	2mm thick flat washer locally obtained	1

WARRANTY INFORMATION

Covered under the terms of the BMW New Vehicle Limited Warranty for Passenger Cars and Light Trucks.

Defect Code:	5220156500	Backrest locking mechanism/adjustment, rear seat/cargo adjuster does not lock in place
---------------------	-------------------	---

G05 with Rear 40/60 Seat

Labor Operation:	Labor Allowance:	Description:
52 26 005	Refer to AIR	Removing and installing (partially) the rear seat (Main work) (to install 1 flat 2 mm thick washer)
OR		
52 26 505	Refer to AIR	Removing and installing (partially) the rear seat (Plus work) (to install 1 flat 2 mm thick washer)

If you are using a Main labor code for another repair, use the Plus code labor operation 52 26 505 instead of 52 26 005.

Or, for the:

G05 and G07 with Rear Comfort 40/60 Seat

Labor Operation:	Labor Allowance:	Description:
52 25 243	Refer to AIR	Removing and installing (partially) both seats (Main work) (to install 1 flat 2 mm thick washer)
OR		
52 25 743	Refer to AIR	Removing and installing (partially) both seats (Plus work) (to install 1 flat 2 mm thick washer)

If you are using a Main labor code for another repair, use the Plus code labor operation 52 25 743 instead of 52 25 243.

Refer to AIR for the corresponding flat rate unit (FRU) allowances.

And:

Sublet – Bulk Material

Sublet Code 4	Up to \$1.00	Reimbursement for the repair-related bulk material (local source flat washers)
---------------	--------------	--

Enter this material cost in sublet and itemize the amount on the repair order and in claim comment section.