

Clutch Pedal Squeak/Creak Noise

Service Category Drivetrain

Section Clutch

Market USA

Toyota Supports
 ASE Certification 

Applicability

YEAR(S)	MODEL(S)	ADDITIONAL INFORMATION
2005 - 2019	Tacoma	

SUPERSESION NOTICE

The information contained in this bulletin supersedes Service Bulletin No. T-SB-0186-12.

- Applicability has been updated to include 2018 and 2019 model year Tacoma vehicles.
- The entire bulletin has been updated.

Service Bulletin No. T-SB-0186-12 is obsolete and any printed versions should be discarded.

Introduction

Some 2005 – 2019 model year Tacoma vehicles equipped with a manual transmission may exhibit a squeak or creak noise from the clutch pedal when it is depressed or released. Follow the Repair Procedure in this bulletin to address this condition.

Warranty Information

OP CODE	DESCRIPTION	TIME	OFF	T1	T2
TC1400	R & R Clutch Pedal Sub-assembly, Clutch Master Cylinder Assembly, and Clutch Reservoir Hose	1.2	31311-04010 31311-04011 31311-04012 31311-04020	91	14

APPLICABLE WARRANTY

- This repair is covered under the Toyota Comprehensive Warranty. This warranty is in effect for 36 months or 36,000 miles, whichever occurs first, from the vehicle's in-service date.
- Warranty application is limited to occurrence of the specified condition described in this bulletin.

Clutch Pedal Squeak/Creak Noise

Parts Information

PART NUMBER		PART NAME	QTY
PREVIOUS	NEW		
31420-04010 31420-04011 31420-04020 31420-60031	31420-60032	Clutch Master Cylinder Assembly	1
31311-04010 31311-04011 31311-04012 31311-04020	31311-04021	Clutch Pedal Sub-assembly	1
31434-04010	31434-60010	Clutch Reservoir Hose	1
90389-06055		Clutch Pedal Sub-assembly Bushing	1

NOTICE

Previous part numbers are NOT compatible with the NEW clutch pedal assembly. Ensure ALL NEW part numbers are utilized when performing the repair in this bulletin.

Required Tools & Equipment

SPECIAL SERVICE TOOLS (SST)	PART NUMBER	QTY
Union Nut Wrench 10 mm	09023-00101	1

NOTE

Additional SSTs may be ordered by calling 1-800-933-8335.

REQUIRED TOOLS & MATERIAL	PART NUMBER	QTY
Body Grease W	08887-02007	1
MP (Multi-Purpose) Grease	–	As Needed
Brake Fluid: SAE J1703 or FMVSS No. 116 DOT 3	–	As Needed

Clutch Pedal Squeak/Creak Noise

Repair Procedure

1. Confirm the condition.

Is there a squeak or creak noise from the clutch pedal assembly when it is depressed or released?

- **YES** — Continue to step 2.
- **NO** — This bulletin does NOT apply. Continue diagnosis using the applicable Repair Manual.

NOTE

Make sure the noise is coming from the clutch pedal assembly and NOT from other components related to the clutch system.

Clutch Pedal Squeak/Creak Noise

Repair Procedure (continued)

- Replace the clutch pedal, clutch master cylinder assembly, and the clutch master cylinder hose.

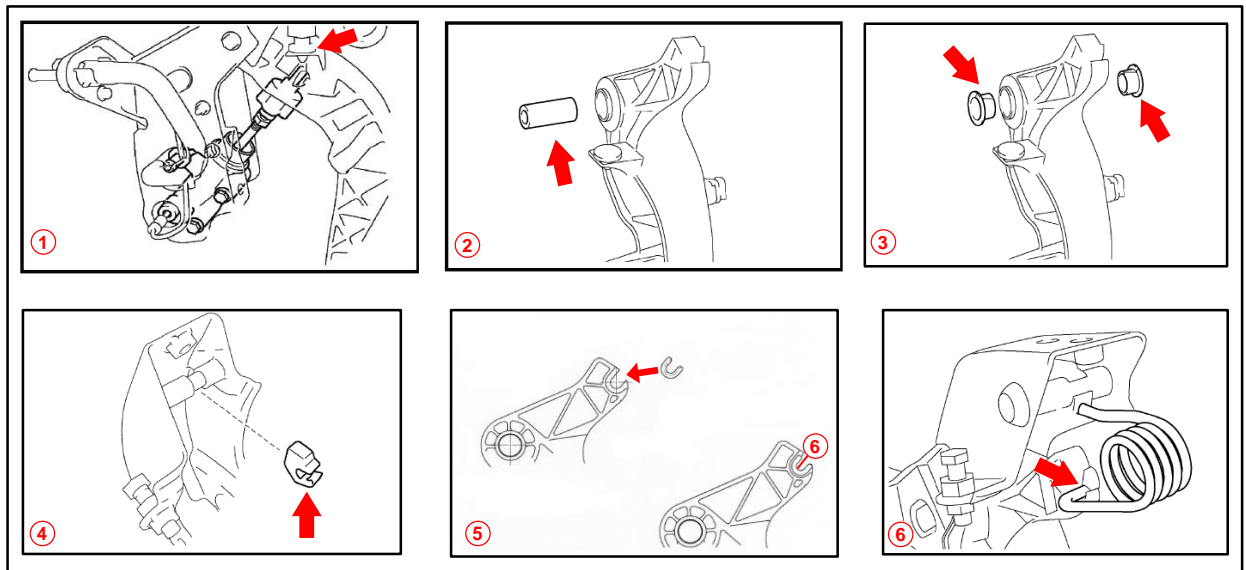
NOTE

- Apply body grease W where the clutch master cylinder clevis and clutch pedal meet (see callout 1).
- Apply MP grease to the shaft collar and turnover spring contact surfaces as shown in the Repair Manual (see callouts 2 – 6).

Refer to TIS, applicable model and model year Repair Manual:

- 2005 Tacoma:
Drivetrain – Clutch – “Clutch Pedal Sub-Assy: Replacement”
- [2006](#) / [2007](#) / [2008](#) / [2009](#) / [2010](#) / [2011](#) / [2012](#) / [2013](#) / [2014](#) / [2015](#) / [2016](#) / [2017](#) / [2018](#) / [2019](#) Tacoma:
Drivetrain – Clutch – “Clutch: Clutch Pedal: Removal”
- [2006](#) / [2007](#) / [2008](#) / [2009](#) / [2010](#) / [2011](#) / [2012](#) / [2013](#) / [2014](#) / [2015](#) / [2016](#) / [2017](#) / [2018](#) / [2019](#) Tacoma:
Drivetrain – Clutch – “Clutch: Clutch Pedal: Installation”

Figure 1.



1	Apply Body Grease W Where the Clutch Master Cylinder and Clutch Pedal Meet
2	Apply MP Grease to Clutch Pedal Shaft Collar
3	Apply MP Grease to the Two Bushings
4	Apply MP Grease to Clutch Pedal Spring Holder and Clutch Pedal Support

5	Install Bushing on Clutch Pedal Sub-assembly Compression Spring Insert
6	Apply MP Grease to Clutch Pedal Sub-assembly and Compression Spring

- Test-drive the vehicle to confirm the condition no longer exists.