

Throttle lift-off clunking noises at drive shafts of rear axle

Topic number	LI35.30-P-058566
Version	5
Function group	35.30 Final drive, drive shafts
Date	08-05-2019
Validity	Model 171,172,203,204,205,207,209,211,212, 213,215, 216,217,218,219,220,221,222,230,231,238,253,257,164, 166,167,292,293 Models 203, 209, 171 as of approx. week 21/04 coated as standard with Molykote paint
Reason for change	Validity for new model series updated.
Reason for block	

Complaint:

Single throttle lift-off clunking noise from the side shaft when moving off (audible at the outboard end). The noise is heard once in each instance when changing direction of travel.

Note: Sound file in attachment

Attachments	
File	Description
Beanstandung Lastwechselknacken.mp3	Sound recording of complaint

Cause:

If the complaint is eliminated by experimentally loosening the outboard collar nut (by 1 turn), the concern may be due to cracking of the microweld between the wheel bearing inner race and the joint housing of the side shaft.

Note: The collar nut must always be replaced after being loosened.

Remedy:

Coat contact surface of side shaft with wheel bearing with Molykote paint. To do this, proceed as follows:

1. Remove side shafts
2. Clean contact surface A (see image file in attachment "Outer joint housing before") before coating with Molykote paint (free of dust and grease)
3. Coat contact surface A (see image file in attachment "Outer joint housing after") with Molykote and leave to dry for "one hour" in removed condition
4. Reinstall side shafts

Note: Before using low friction paint (Molykote) stir or shake it thoroughly.

Attachments	
File	Description
Gelenkgehäuse aussen vor.jpg	Before coating with Molykote paint
Gelenkgehäuse aussen nach.jpg	After coating with Molykote paint

Symptoms

XENTRY TIPS

Power transmission / Noises / Throttle lift-off clunking noise

Power transmission / Drive shaft / Axle shaft / Noises / Knocking/banging

Parts

Part number	ES1	ES2	Designation	Quantity	Note	EPC
A 000 989 01 52	10		Low-friction paint (Molykote)	1		X

Operation numbers/damage codes

Op. no.	Operation text	Time	Damage code	Note
35-7230	REMOVE/INSTALL BOTH REAR AXLE SHAFTS		35S02 34	
35-7230	REMOVE/INSTALL BOTH REAR AXLE SHAFTS		35D02 34	

Validity

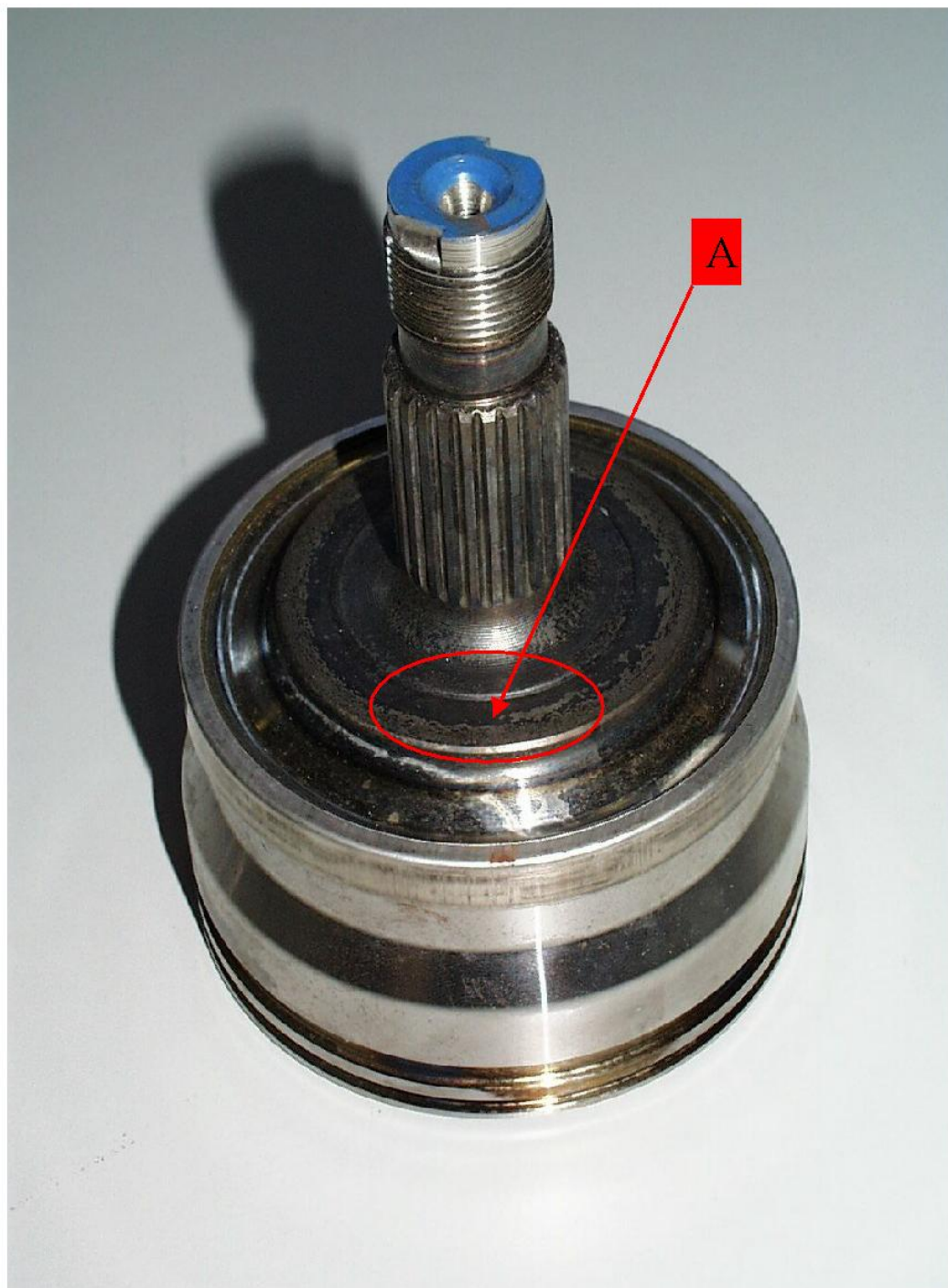
Vehicle	Engine	Transmission
C (203)	*	*
C (204)	*	*
C (205)	*	*
CL (215)	*	*
CL (216)	*	*
CLK (209)	*	*
CLS (218)	*	*
CLS (219)	*	*
CLS (257)	*	*
E (207)	*	*
E (211)	*	*
E (212)	*	*
E (213)	*	*
E (238)	*	*
EQC (293)	*	*
GL (164)	*	*
GL/GLS (166)	*	*
GLC (253)	*	*
GLE (167)	*	*
GLE (292)	*	*
GLS (167)	*	*
M (164)	*	*
M/GLE (166)	*	*

XENTRY TIPS

S (217)	*	*
S (220)	*	*
S (221)	*	*
S (222)	*	*
SL (230)	*	*
SL (231)	*	*
SLK (171)	*	*
SLK/SLC 172	*	*

Attachments

Gelenkgehäuse aussen
vor.jpg:



XENTRY TIPS

Gelenkgehäuse aussen
nach.jpg:

