



SERVICE BULLETIN

Classification:

EL18-005c

Reference:

NTB18-041c

Date:

August 29, 2019

2017-2020 ROGUE, ROGUE HYBRID, AND ROGUE SPORT; FALSE ACTIVATION OF AEB, FEB, OR FCW

This bulletin has been amended. See **AMENDMENT HISTORY** on the last page.
Please discard previous versions of this bulletin.

APPLIED VEHICLES: 2017-2020 Rogue (T32)
2017-2019 Rogue Sport (J11)
2017-2019 Rogue Hybrid (T32)

IF YOU CONFIRM

The following system(s) falsely activated or the customer reports false activation of:

- AEB (Automatic Emergency Braking);
- FEB (Forward Emergency Braking);
- FCW (Forward Collision Warning)

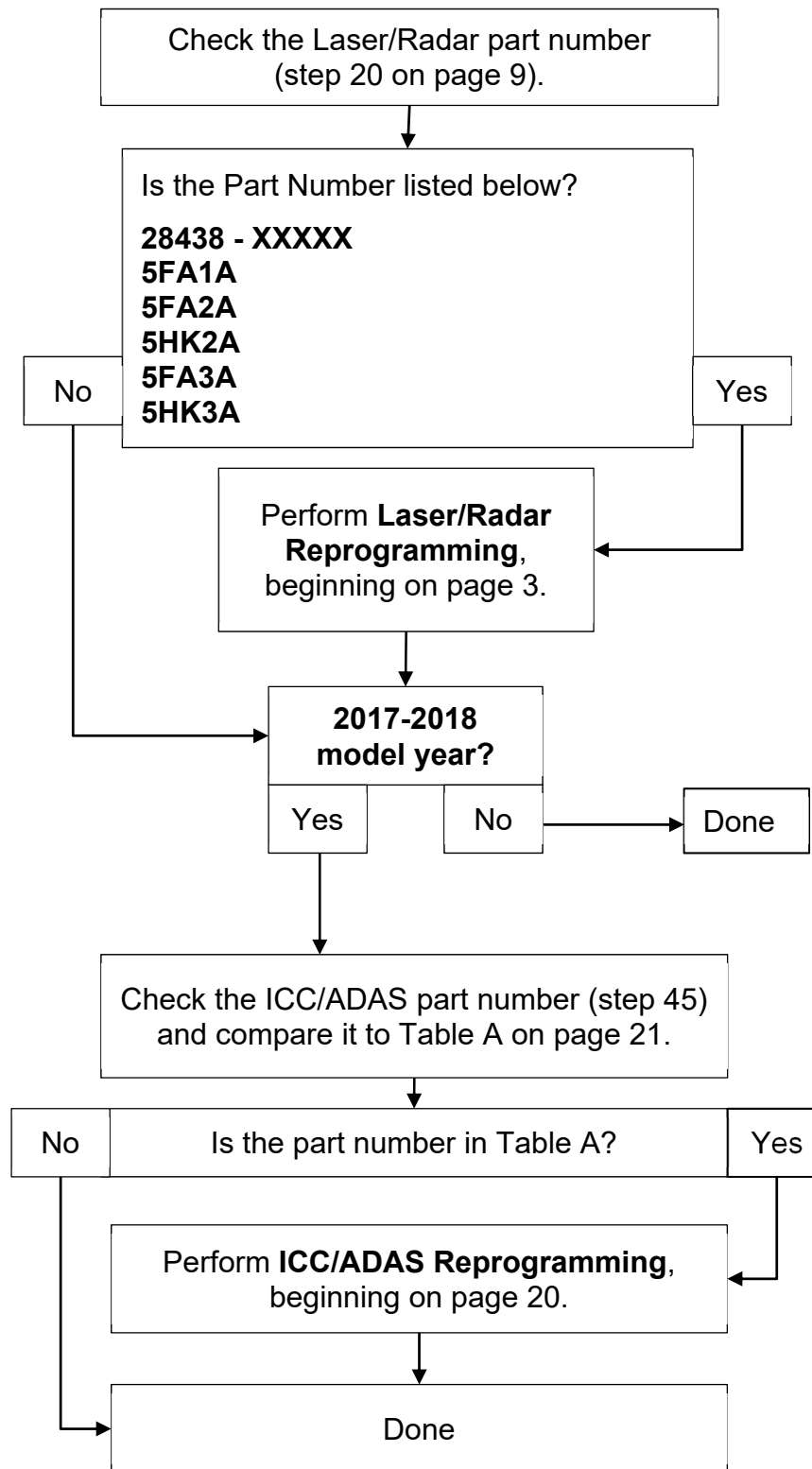
ACTION

1. Check Service COMM or Dealer Business Systems (DBS) National Service History to determine if campaign NTB19-064 applies to this vehicle. If the campaign **IS** applicable to the vehicle you are working on then this TSB does **NOT** apply. **ONLY** perform campaign NTB19-064.
2. Refer to the Repair Overview on page 2.

IMPORTANT: The purpose of ACTION (above) is to give you a quick idea of the work you will be performing. You **MUST** closely follow the entire SERVICE PROCEDURE as it contains information that is essential to successfully completing this repair.

Nissan Bulletins are intended for use by qualified technicians, not 'do-it-yourselfers'. Qualified technicians are properly trained individuals who have the equipment, tools, safety instruction, and know-how to do a job properly and safely. NOTE: If you believe that a described condition may apply to a particular vehicle, DO NOT assume that it does. See your Nissan dealer to determine if this applies to your vehicle.

REPAIR OVERVIEW



HINT: If reprogramming is not performed, refer to the Electronic Service Manual (ESM) for further diagnostic information.

SERVICE PROCEDURE

Laser/Radar Reprogramming

IMPORTANT: Before starting, make sure:

- ASSIST on the CONSULT PC has been synchronized (updated) to the current date.
- All CONSULT–III plus (C-III plus) software updates (if any) have been installed.
- The CONSULT PC is connected to the Internet via a cable or Wi-Fi.
 - Later in the procedure you will be required to enter your User Name and Password.
 - The CONSULT PC must be connected to the Internet.
 - If you do not know your User Name and Password, contact your Service Manager.
- A screen print for Warranty documentation can be done from the CONSULT PC during this process while still connected to the vehicle.
- No Diagnostic Trouble Codes (DTCs) are stored.
 - Use C-III plus to perform Self Diagnosis for all systems.
 - If there are any DTCs: diagnose, perform repairs, and erase DTCs **before** continuing.

1. Connect the plus Vehicle Interface (plus VI) to the vehicle.
 - Make sure to use the correct VI for C-III plus (plus VI).

NOTICE

Make sure the plus VI is securely connected. If the plus VI connection is loose during reprogramming, the process will be interrupted and the **control unit may be damaged.**

2. Connect the AC Adapter to the CONSULT PC.

NOTICE

Be sure to connect the AC Adapter. If the CONSULT PC battery voltage drops during reprogramming, the process will be interrupted and the **control unit may be damaged.**

3. Connect a battery maintainer or smart charger set to reflash mode or a similar setting.

NOTICE

If the vehicle's battery voltage drops below 12.0V or rises above 15.5V during reprogramming, the control unit may be damaged.

4. Turn OFF all external Bluetooth® devices (e.g., cell phones, printers, etc.) within range of the CONSULT PC and the VI.

NOTICE

Make sure to turn OFF all external Bluetooth® devices. If Bluetooth® signal waves are within range of the CONSULT PC and the plus VI during reprogramming, reprogramming may be interrupted and the **control unit may be damaged**.

5. Turn the ignition ON with the engine OFF.
 - The engine must not start or run during the reprogramming procedure.
6. Turn OFF all vehicle electrical loads such as exterior lights, interior lights, HVAC, blower, rear defogger, audio, NAVI, seat heater, steering wheel heater, etc.
7. Turn ON the CONSULT PC.
8. Start C-III plus.

- The serial number will display when the plus VI is recognized.

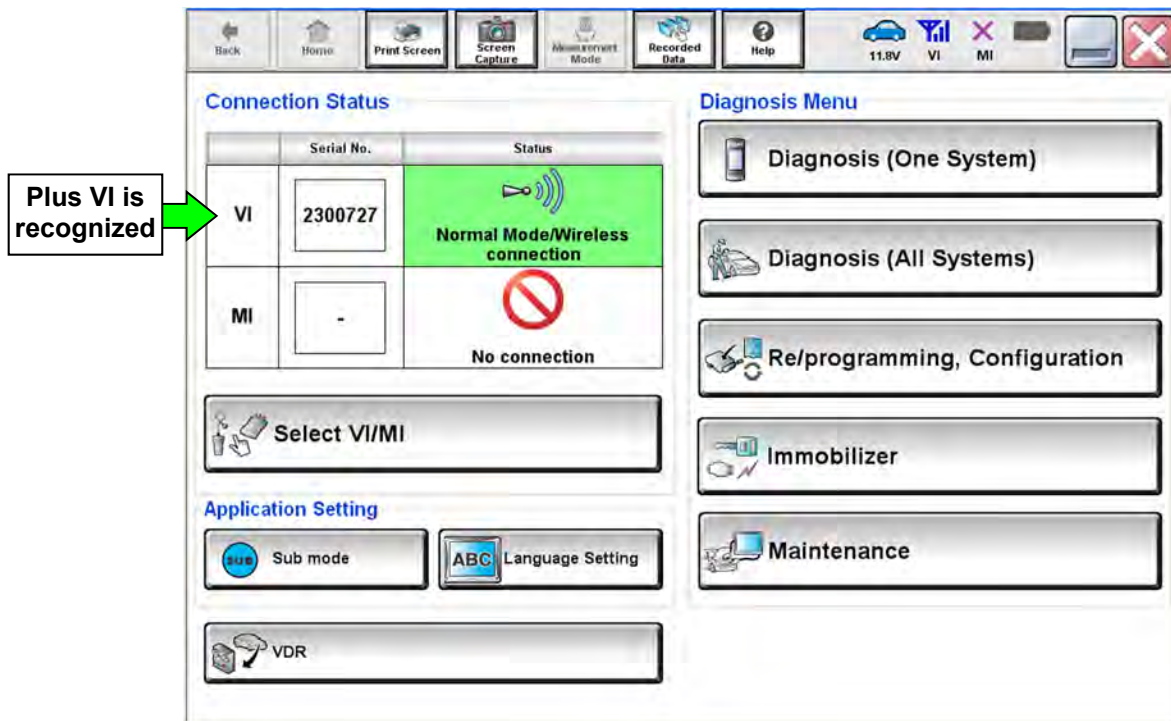


Figure 1

9. Select **Re/programming, Configuration**.

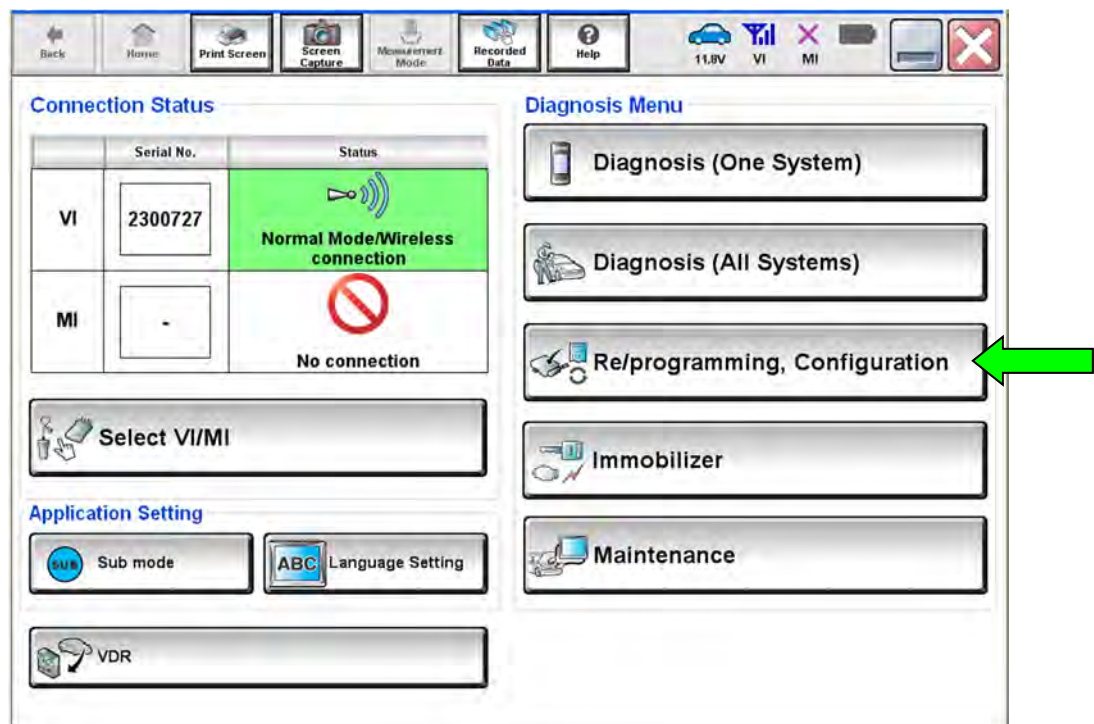


Figure 2

10. Use arrows (if needed) to view and read all precautions.
11. Check the box confirming the precautions have been read.
12. Select **Next**.

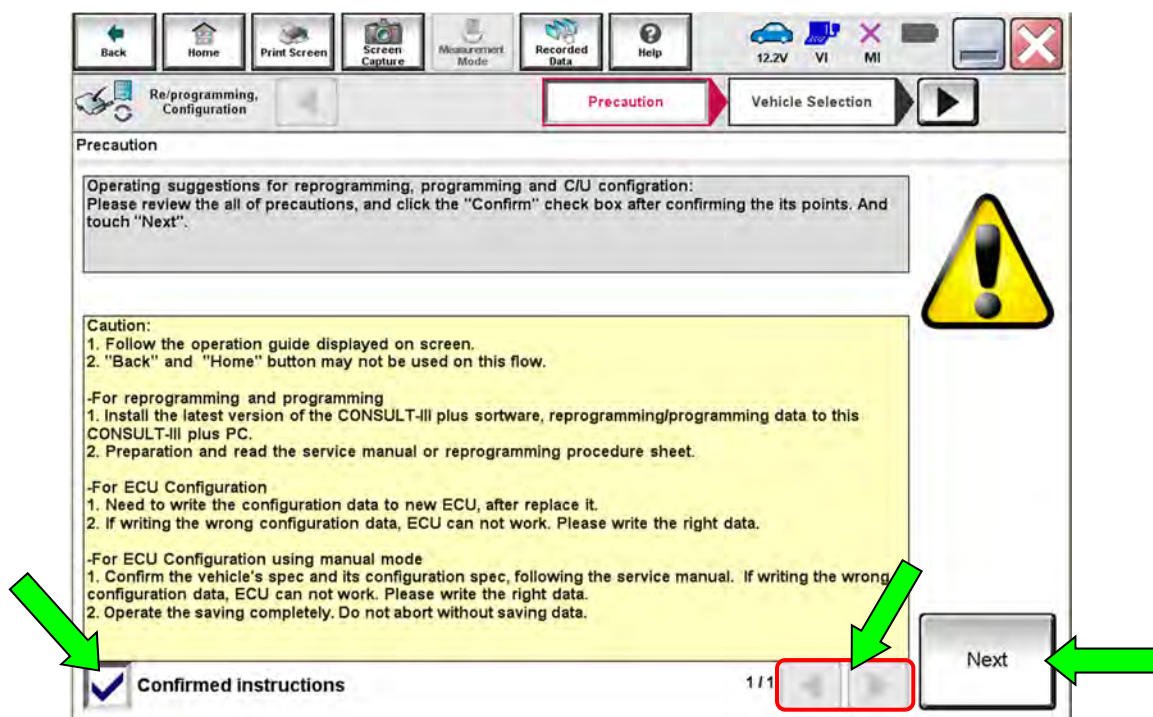


Figure 3

13. Select **Automatic Selection(VIN)**.

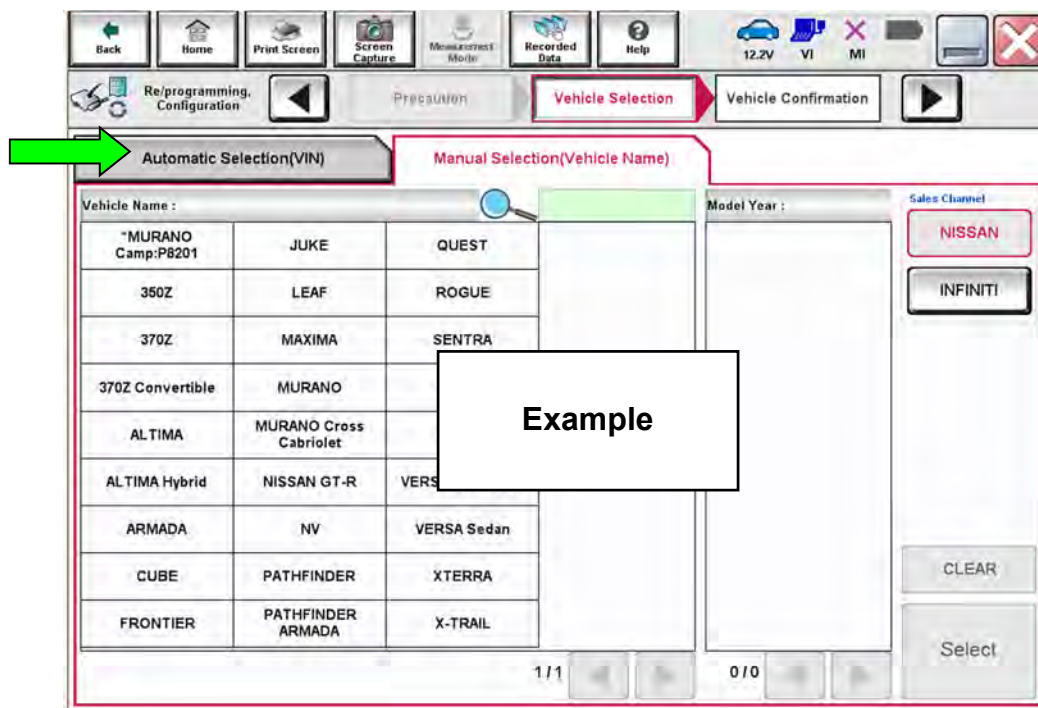


Figure 4

14. Make sure **VIN or Chassis #** matches the vehicle's VIN.
15. If the correct VIN is displayed, select **Confirm**.

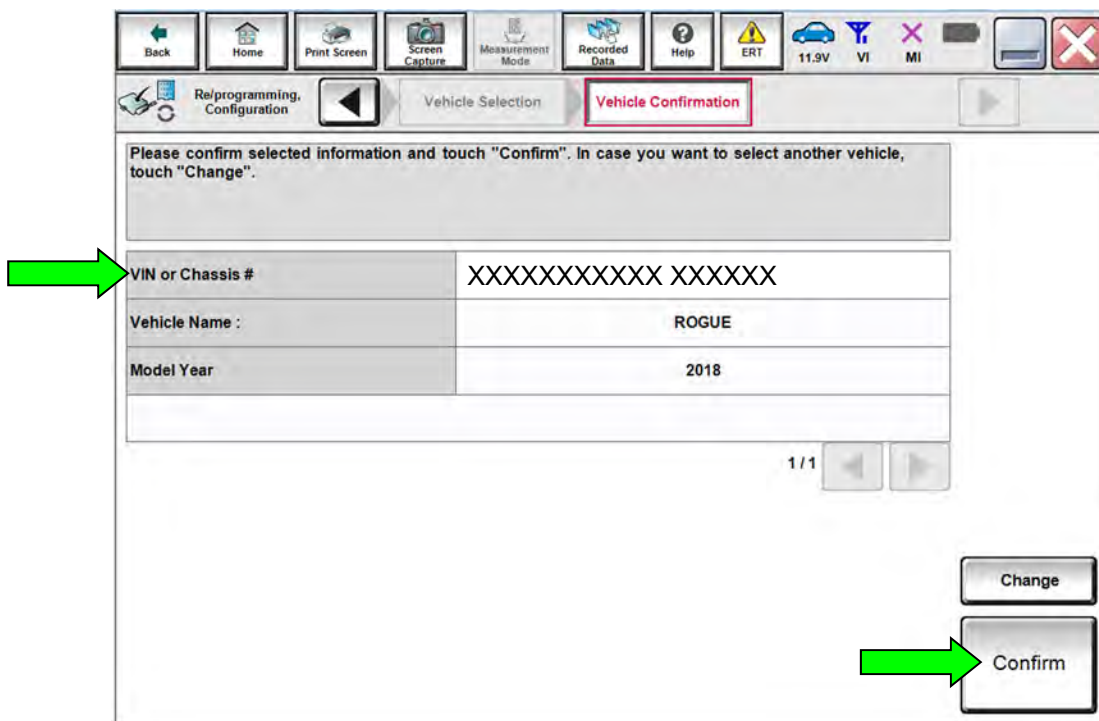


Figure 5

16. Select **Confirm**.

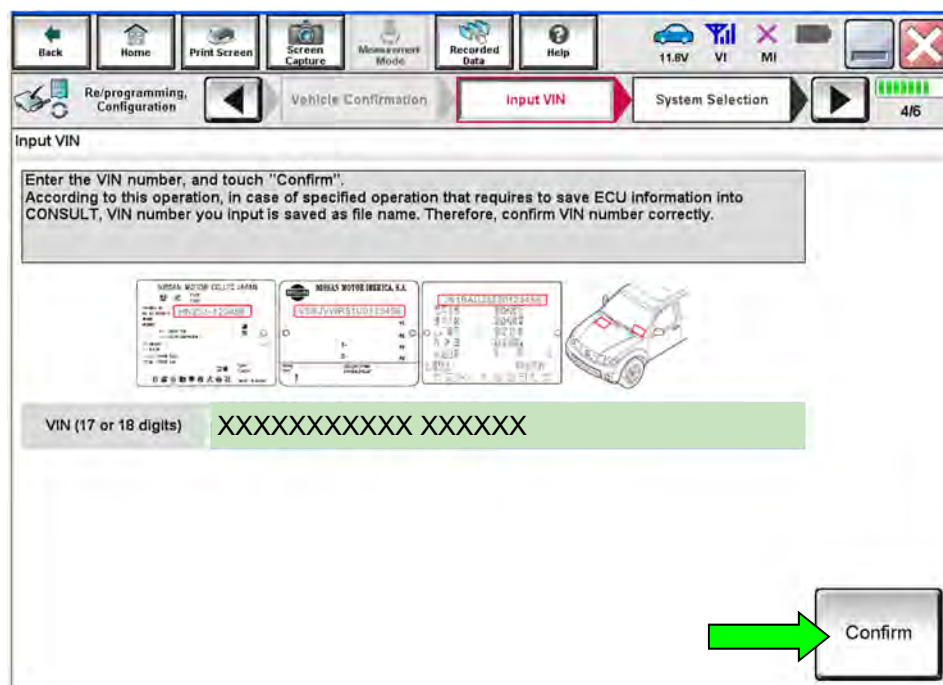


Figure 6

17. Select **LASER/RADAR**.

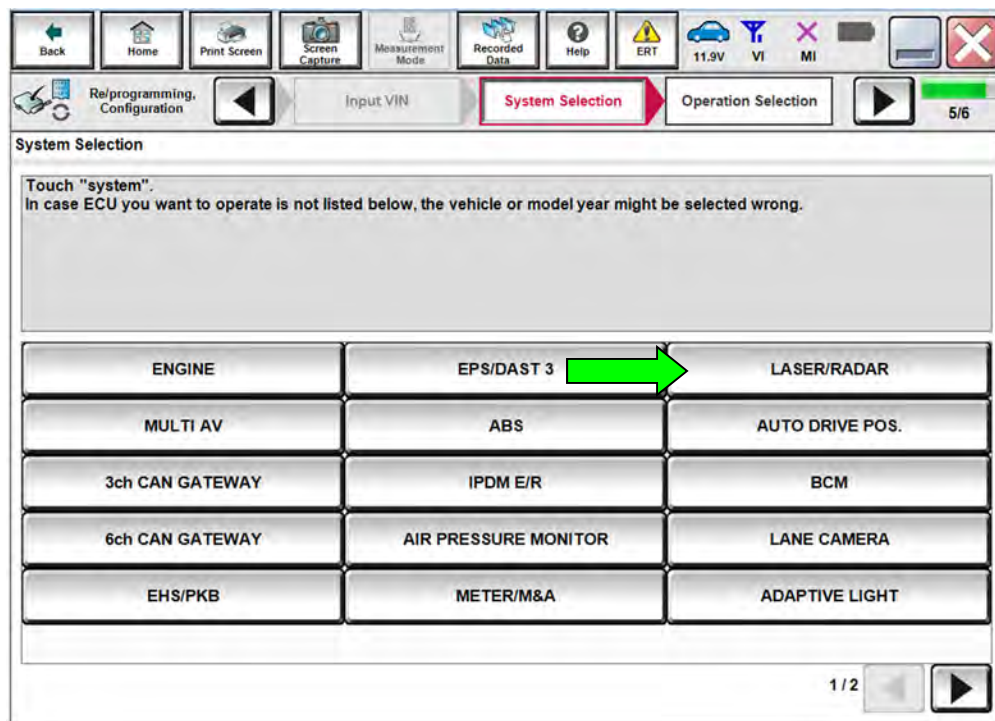


Figure 7

18. Select **Reprogramming**.

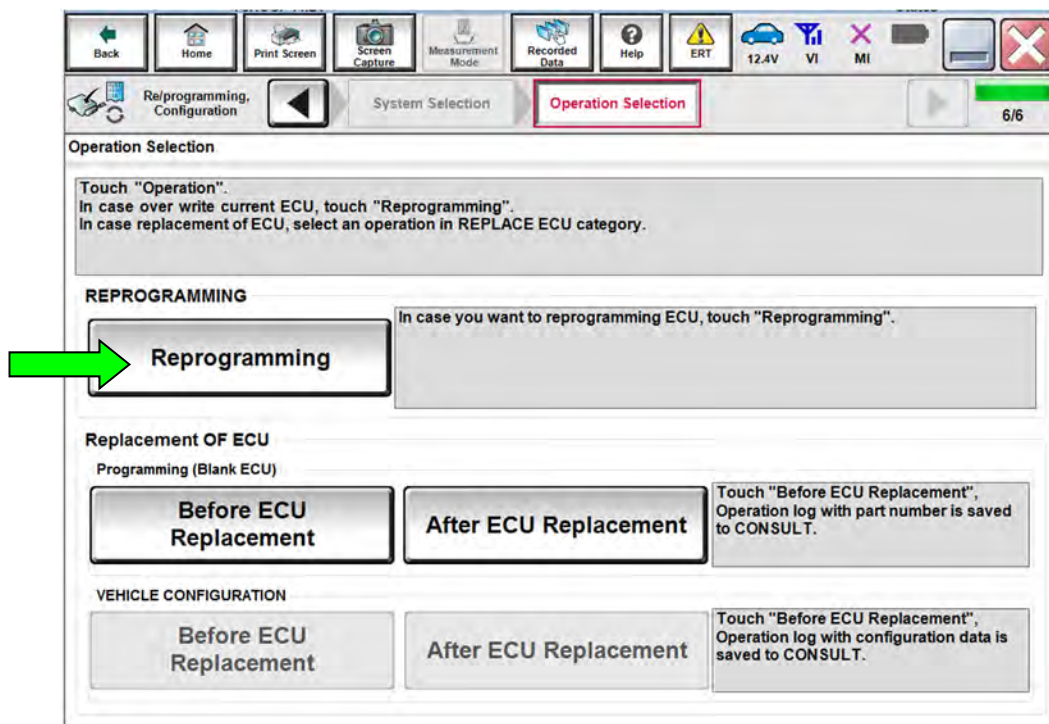


Figure 8

19. When you get to the screen shown in Figure 9, confirm that a reprogram is available with the flow chart below.

Save ECU Data

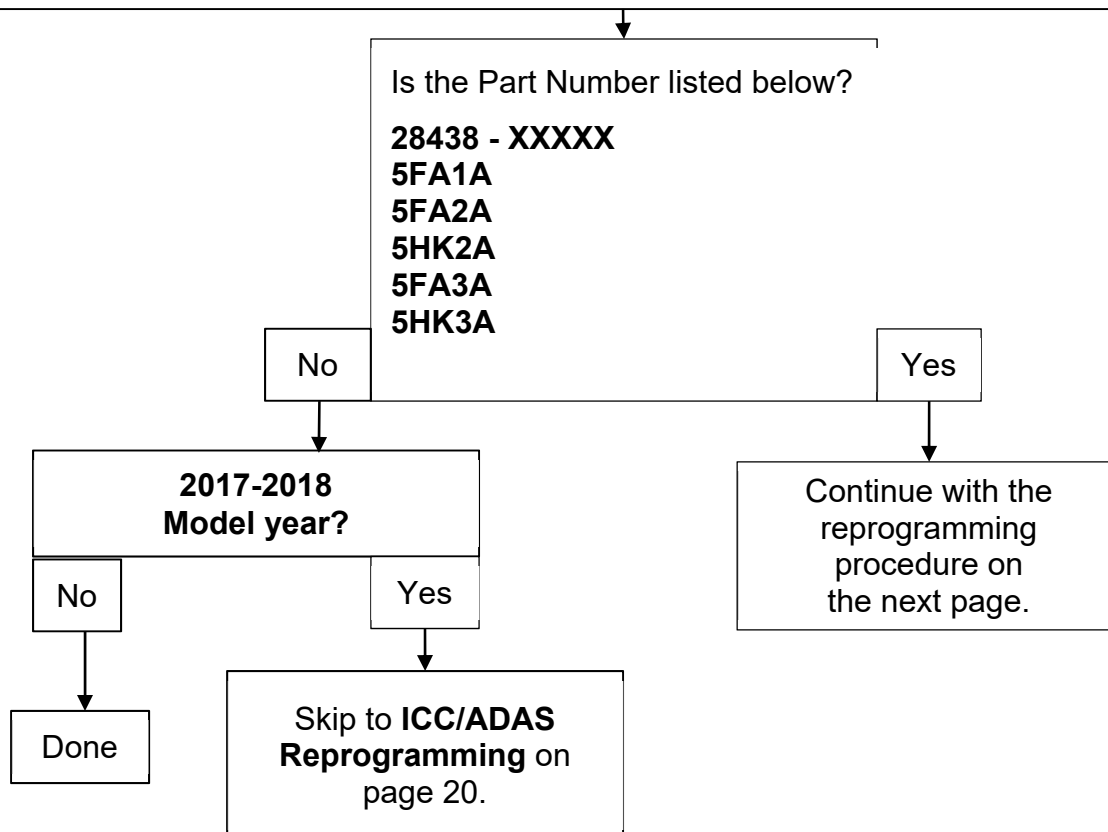
Touch "Save" to save operation log and the current part number as listed below to CONSULT. Operation log helps to restart next operation by selecting suitable operation log. Operation log is erased after operation has completely finished.

File Label	XXXXXXXXXXXX XXXXXX
Operation	REPROGRAMMING
System	LASER/RADAR
Part Number	284385 XXXXX
Vehicle	T32ROGUE
VIN	XXXXXXXXXXXX
Date	XXXXXXXXXXXX

Save

Figure 9

Find the LASER/RADAR **Part Number** and write it on the repair order.
HINT: This is the vehicle's current LASER/RADAR Part Number (P/N).



20. Select **Save**.

Back Home Print Screen Screen Capture Measurement Mode Recorded Data Help ERT 11.9V VI MI

Re/programming Configuration Operation Selection **Save ECU Data** 7/7

Save ECU Data

Touch "Save" to save operation log and the current part number as listed below to CONSULT. Operation log helps to restart next operation by selecting suitable operation log. Operation log is erased after operation has completely finished.

File Label	XXXXXXXXXXXX XXXXXX
Operation	REPROGRAMMING
System	LASER/RADAR
Part Number	28438 - XXXXX
Vehicle	T32ROGUE
VIN	XXXXXXXXXXXX XXXXXX
Date	XXXXXXXXXXXX

Save

Figure 10

21. Use arrows (if needed) to view and read all precautions.

22. Check the box confirming the precautions have been read.

23. Select **Next**.

Back Home Print Screen Screen Capture Measurement Mode Recorded Data Help 12.1V VI MI

Re/programming Configuration Save ECU Data **Precaution** Select Program Data 8/11

Precaution

Operating suggestions:
If the reprogramming/programming is unsuccessful, ECU software may be damaged and ECU is no longer usable.
Please review the all of precautions, and click the "Confirm" check box after confirming the its points.

4. DO NOT set the A/C timer or A/C remote control system.

<During reprogramming>
Never touch the CONSULT-III plus components to prevent cable disconnection.
Never depress the brake pedal or turn the steering wheel.
Never open each door or trunk lid.

Confirmed instructions ☒ 2/2

Next

Figure 11

24. Read the **Current Part Number** and **Part Number After Reprogramming**. They should be different.

25. Select **Next**.

The screenshot shows a software interface for vehicle reprogramming. At the top is a toolbar with icons for Back, Home, Print Screen, Screen Capture, Measurement Mode, Recorded Data, Help, ERT, 11.9V, VI, MI, and a close button. Below the toolbar is a navigation bar with buttons for 'Reprogramming, Configuration', 'Precaution', 'Select Program Data' (highlighted with a red box), 'Confirm Vehicle Condition', and a progress indicator '9/10'.

The main area is titled 'Select Program Data' and contains the following text:

Confirm the detail listed below, and touch "Next" if OK.
-In case the screen to select reprog/programming data is NOT displayed, only one data is available for this vehicle.
-In case the part number after reprogramming is wrong, touch "Re-select", and confirm the vehicle selection, VIN and reprog/programming data in CONSULT.

Below the text is a table with the following data:

Part Number After Repro/programming	28438XXXXX
Current Part Number	28438XXXXX
Vehicle	ROGUE T32
VIN	XXXXXXXXXXXXXXXXXX
System	LASER/RADAR
Other Information	XXXXX
Expected time to finish re/programming	10min

Annotations on the screenshot include:

- Two green arrows pointing from the 'Part Number After Repro/programming' and 'Current Part Number' fields to a red circle around the value '28438XXXXX'.
- A white box with the text 'These numbers should be different' and a green arrow pointing to the red circle.
- A green arrow pointing from the 'Next' button at the bottom right.

Figure 12

HINT:

- In some cases, more than one new P/N for reprogramming is available.
 - If more than one new P/N is available, the screen in Figure 13 displays.
 - Select and use the reprogramming option that does **not** have the message “Caution! Use ONLY with NTBXX-XXX”.
- If you get this screen and it is **blank** (no reprogramming listed), it means there is no reprogramming available for the Laser/Radar control unit in this vehicle. Proceed to **ICC/ADAS Reprogramming** on page 20.

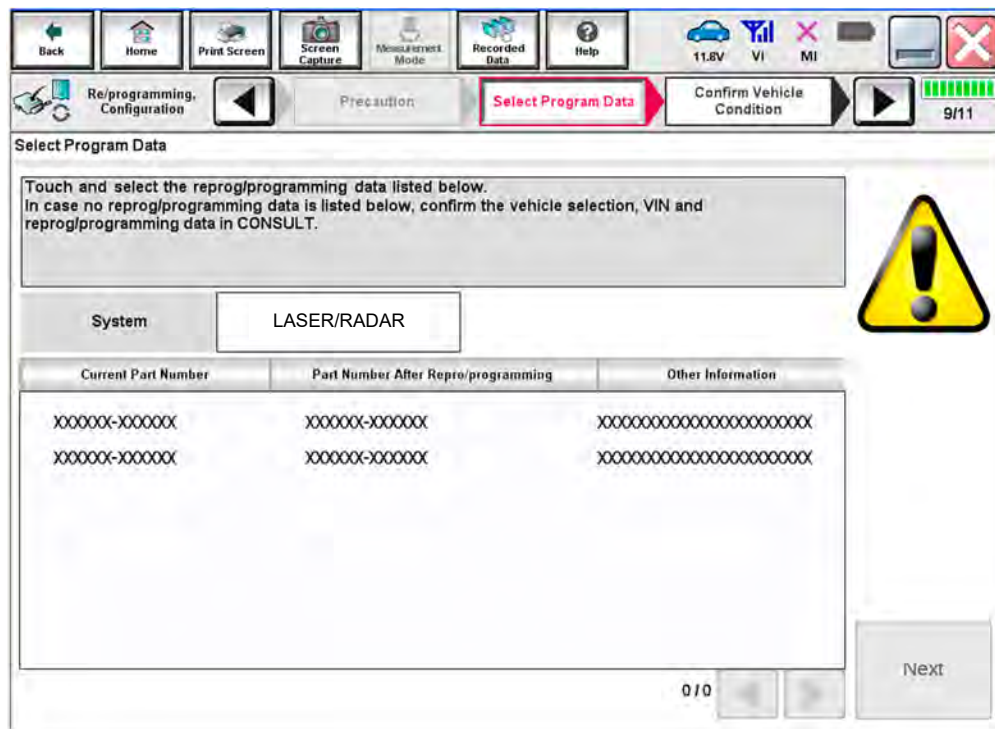


Figure 13

26. Make sure **OK** is highlighted **green** (battery voltage must be between **12.0** and **15.5 Volts**).
27. Select **Next**.

NOTICE Battery voltage must stay between **12.0** and **15.5 Volts** during reprogramming or reprogramming may be interrupted and the control unit may be damaged.

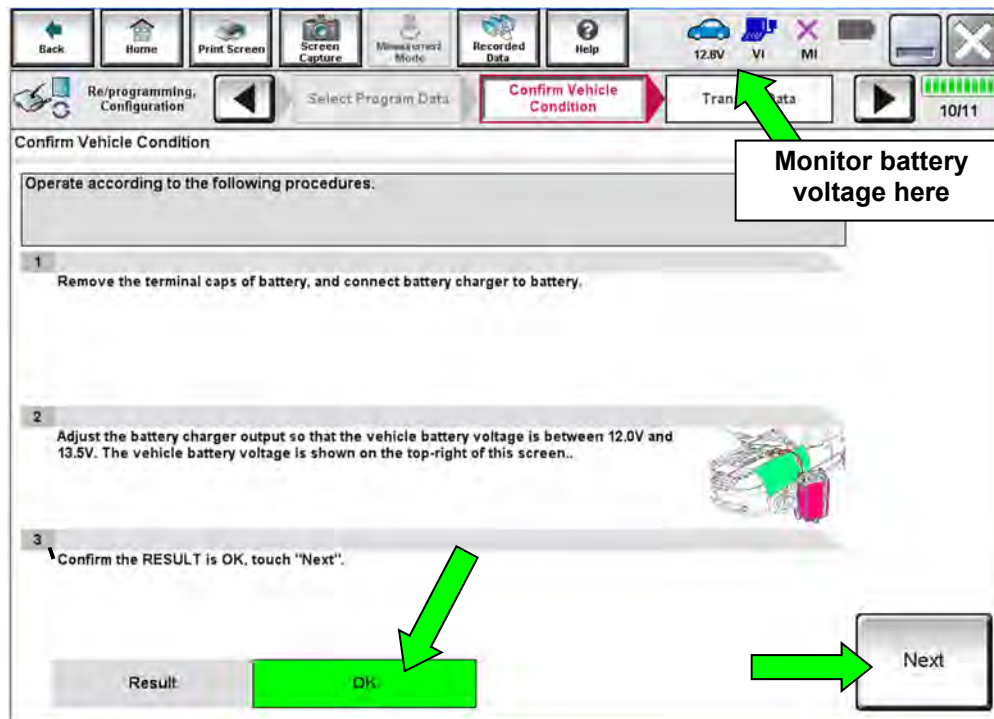


Figure 14

28. Confirm all Judgment items are **OK**, then select **Start**.

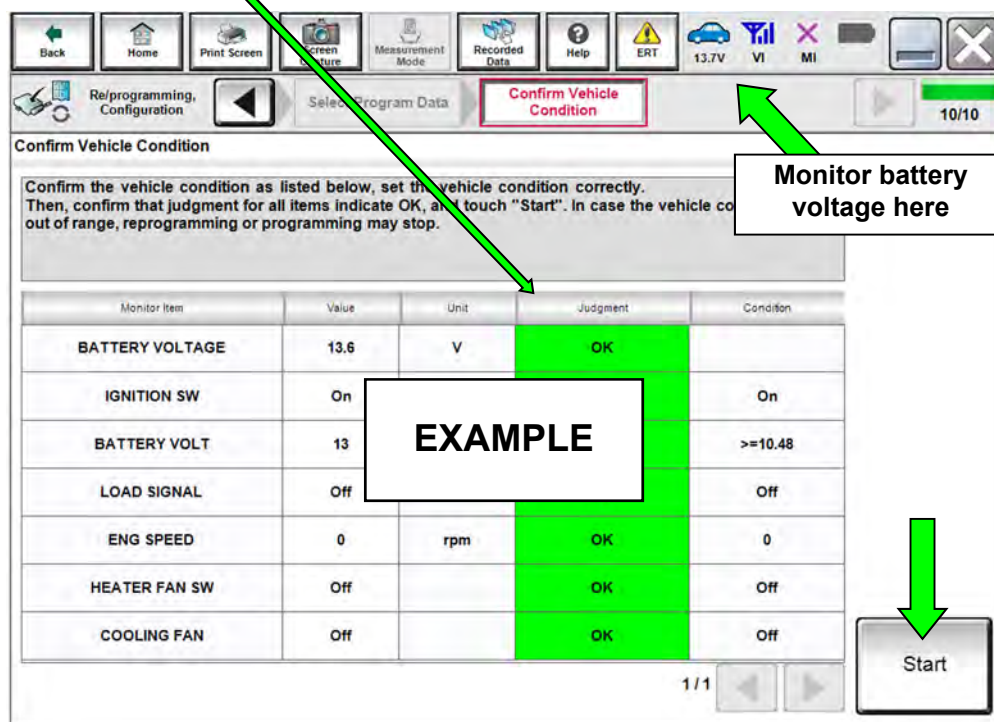


Figure 15

29. Select **USA/CANADA Dealers**.

30. Select **OK**.

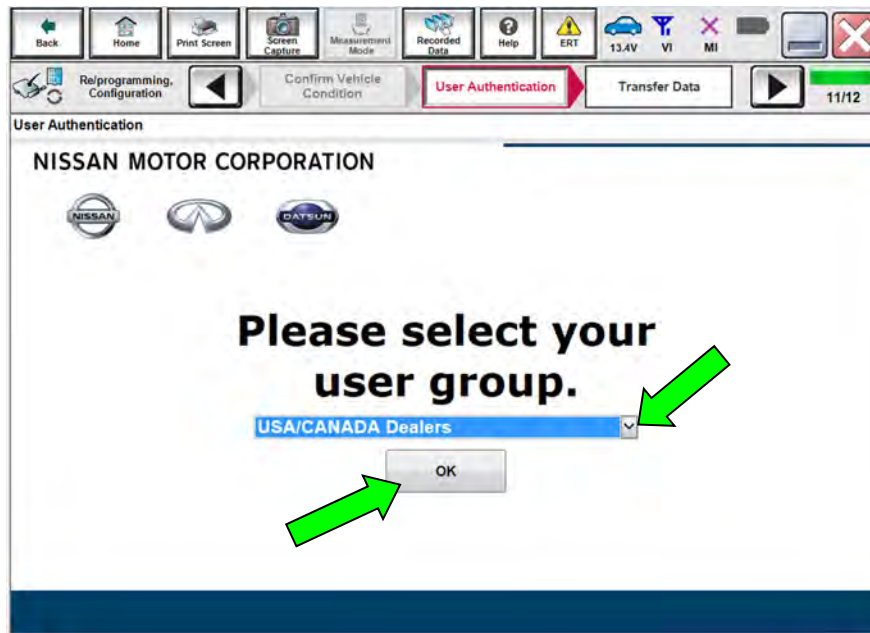


Figure 16

HINT:

- The above screen may not display if the CONSULT PC has remained ON since the last reprogramming.
- If the CONSULT PC is not connected to the Internet, the screen in Figure 17 will display.

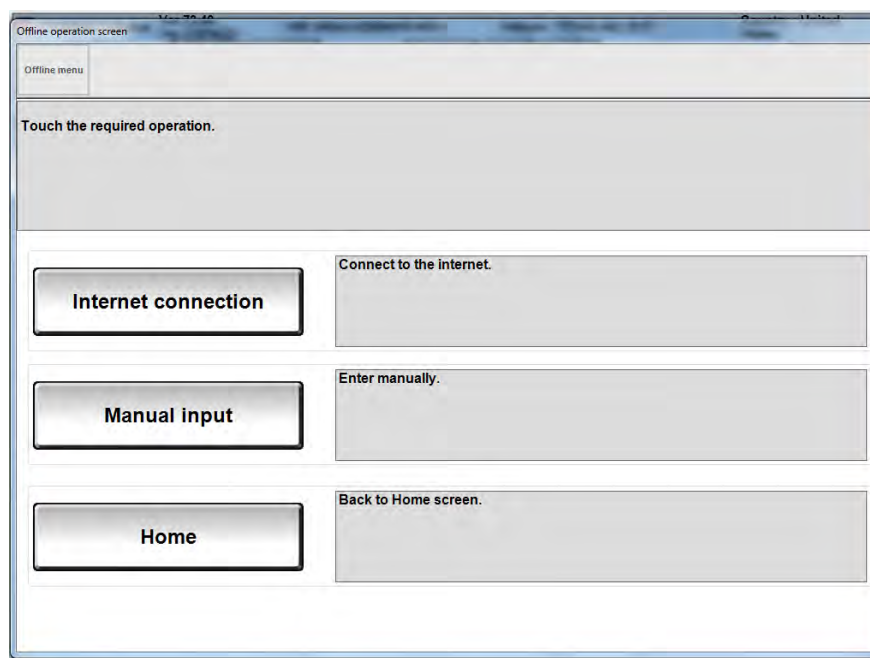


Figure 17

HINT: In the next steps, the reprogramming process will begin when **Submit** is selected.

31. Enter your **Username** and **Password**.

- The CONSULT PC must be connected to the Internet via cable or Wi-Fi.
- If you do not know your User Name and Password, contact your Service Manager.

32. Select **Submit**.

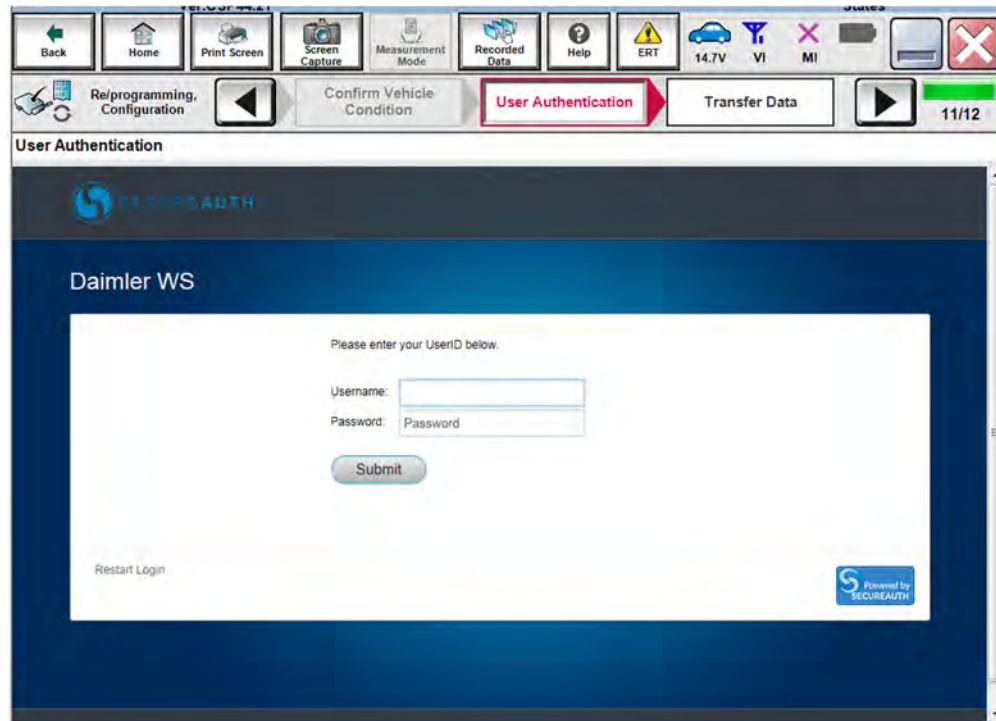


Figure 18

33. Wait for both progress bars to complete.

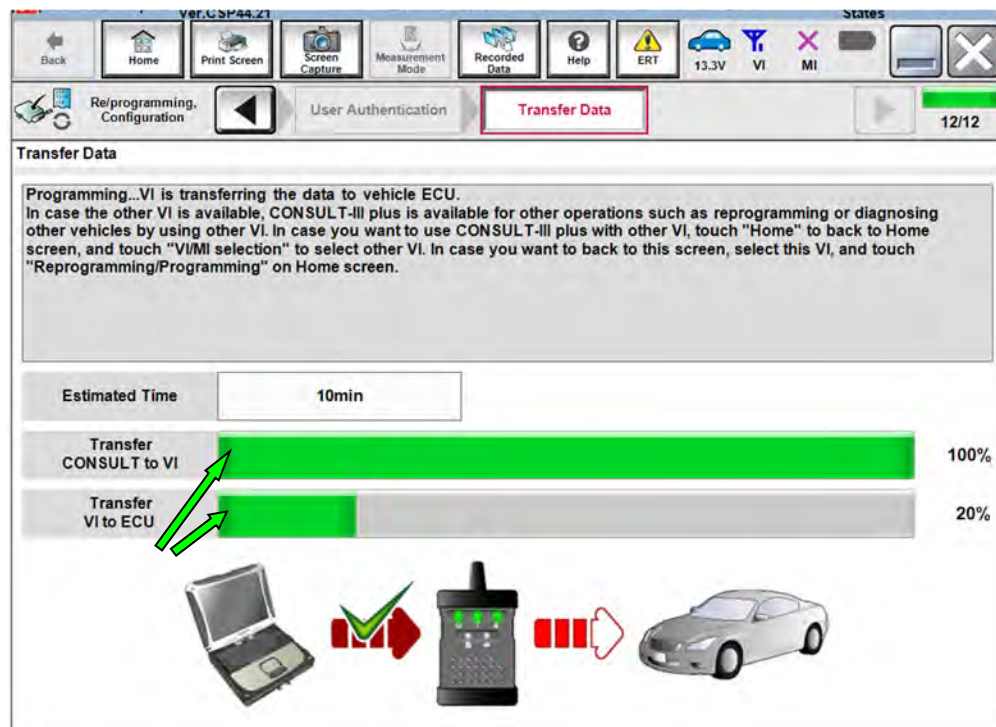


Figure 19

34. When the screen in Figure 20 displays, the reprogramming is complete.
- HINT:** If the screen in Figure 20 does not display (indicating that reprogramming did not complete), refer to **Laser/Radar Recovery** on the next page.
35. Disconnect the battery charger from the vehicle.
36. Select **Next**.

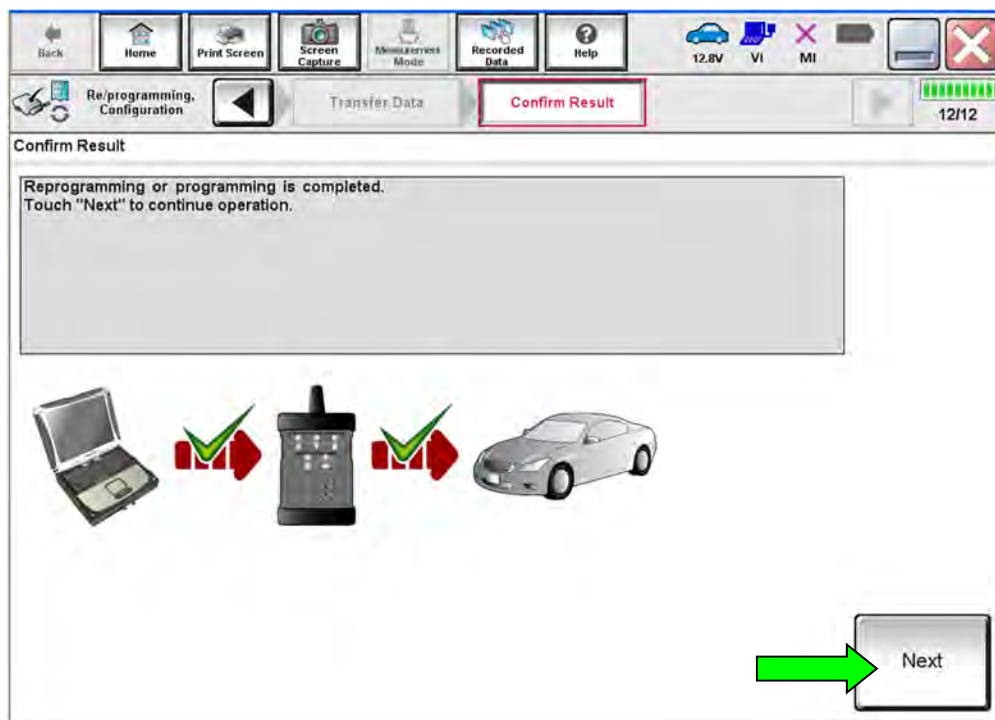


Figure 20

HINT: Additional steps/operations are required before C-III plus will provide the final reprogramming confirmation report. Continue with the reprogramming procedure on page 18.

Laser/Radar Recovery

Do not disconnect plus VI or shut down Consult III plus if reprogramming does not complete.

If reprogramming does not complete and the “!?” icon displays as shown in Figure 21:

- Check battery voltage (12.0 - 15.5 V).
- Ignition is ON, engine OFF.
- External Bluetooth® devices are OFF.
- All electrical loads are OFF.
- **Select retry and follow the on screen instructions.**
- **“Retry” may not go through on first attempt and can be selected more than once.**

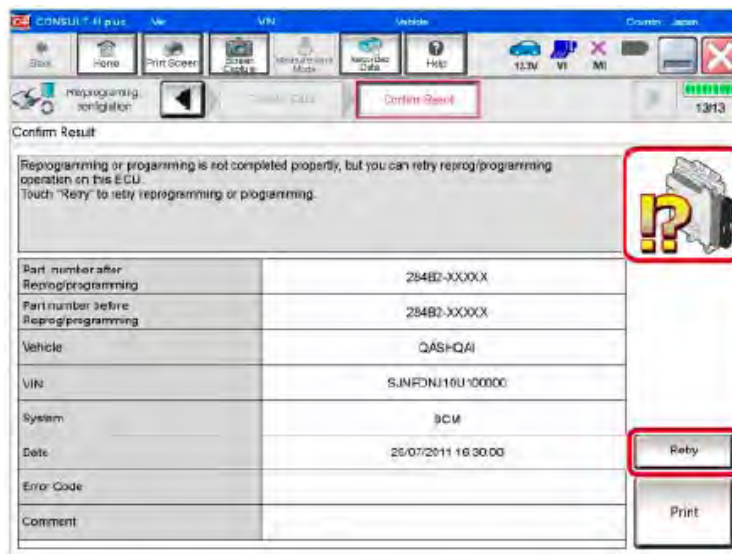


Figure 21

If reprogramming does not complete and the “X” icon displays as shown in Figure 22:

- Check battery voltage (12.0 - 15.5 V).
- CONSULT A/C adapter is plugged in.
- Ignition is ON, engine OFF.
- Transmission is in Park.
- All C-III plus / VI cables are securely connected.
- All C-III plus updates are installed.
- **Select Home, and restart the reprogram procedure from the beginning.**

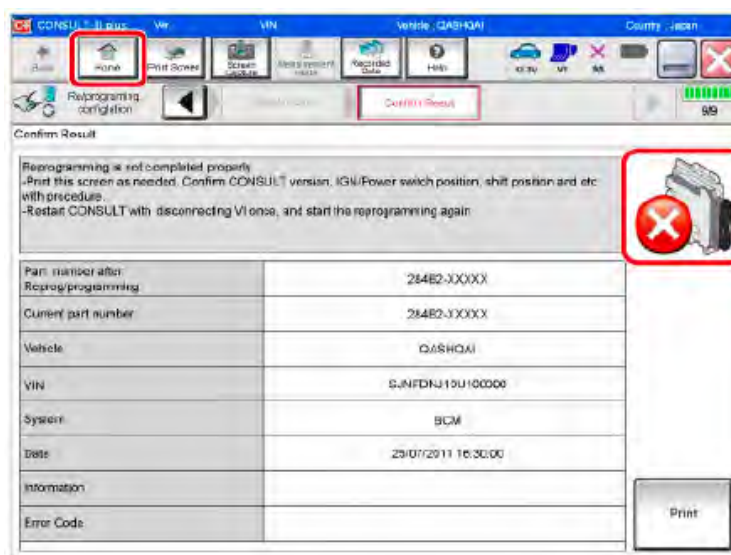


Figure 22

37. **Erase all DTCs** as follows:

- a. Turn the ignition OFF.
- b. Turn the ignition ON.
- c. Wait for DTC erase to complete.

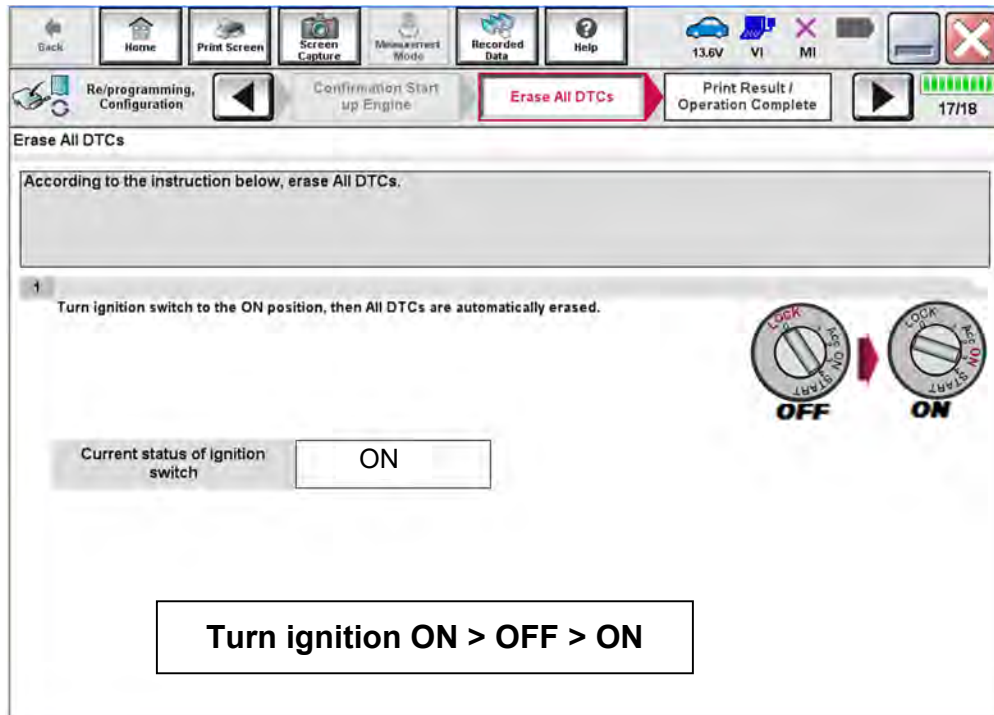


Figure 23

38. Verify the before and after part numbers are different.
39. Print a copy of this screen (Figure 24) and attach it to the repair order for warranty documentation.

HINT: If you cannot print the screen:

 - a. Select Screen Capture.
 - b. Name the file.
 - c. Save the file in My Documents.
 - A copy of the screen is now saved in the CONSULT PC. It can be retrieved and printed at a later time.
40. Select **Confirm**.

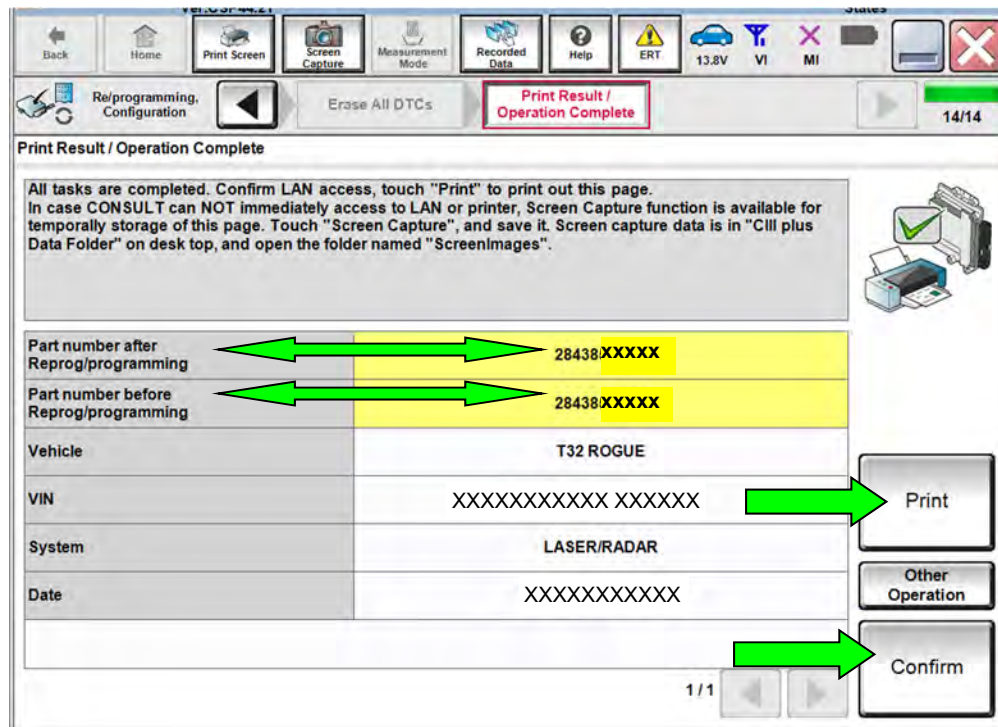


Figure 24

HINT: For 2017 - 2018 model year vehicles, continue to step 41 on the next page. For all other vehicles, the repair is complete.

ICC/ADAS Reprogramming

2017 – 2018 Vehicles ONLY

HINT: LASER/RADAR control unit reprogramming must be performed first (if indicated by the flow chart on page 9) before proceeding.

41. Refer to steps 1-17 starting on page 3 to navigate to Figure 25.

42. Select **ICC/ADAS**.

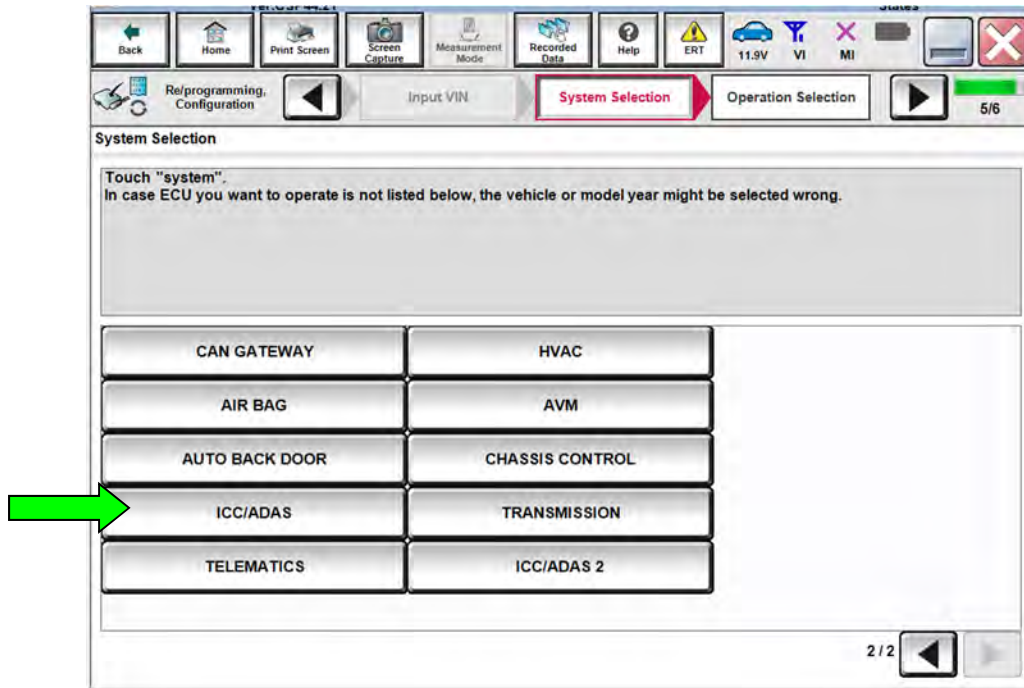


Figure 25

43. Select **Reprogramming**.

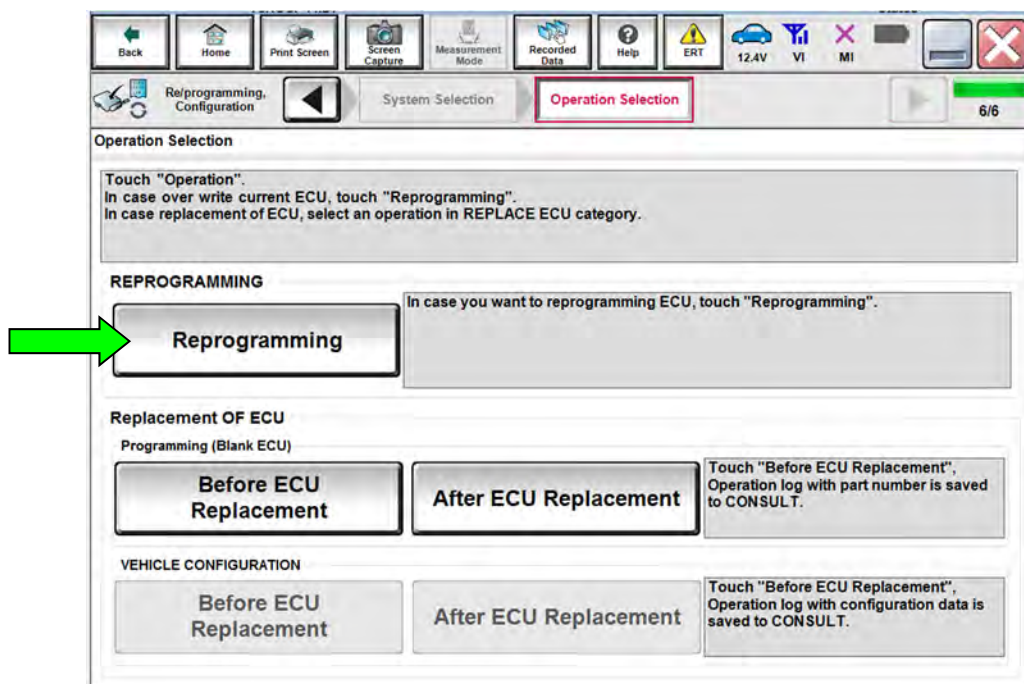


Figure 26

44. When you get to the screen shown in Figure 27, confirm that a reprogram is available as follows.

A. Find the ICC/ADAS **Part Number** and write it on the repair order.

HINT: This is the current ICC/ADAS Part Number (P/N).

Save ECU Data

Touch "Save" to save operation log and the current part number as listed below to CONSULT. Operation log helps to restart next operation by selecting suitable operation log. Operation log is erased after operation has completely finished.

File Label	XXXXXXXXXXXXXXXXXX
Operation	REPROGRAMMING
System	ICC/ADAS
Part Number	284E7XXXXX
Vehicle	T32ROGUE
VIN	XXXXXXXXXXXXXXXXXX
Date	XXXXXXXXXXXXXXXXXX

Save

Figure 27

B. Compare the P/N you wrote down to the numbers in the **Current ICC/ADAS Part Number** column in **Table A**.

- If there is a match, continue with the reprogramming procedure.
- If there is not a match in Table A, proceed to step 54 on page 26.

Table A

MODEL	YEAR	CURRENT ICC/ADAS PART NUMBER: 284E7-
Rogue and Rogue Hybrid	2017	6FL1B, 6FL2B, 6FL7B, 6FL8B
		7FF7B, 7FF8B
	2018	5HR0A, 5HR9A
		5HR9B
		5HR0C
		5HR0E, 5HR1E, 5HR3E, 5HR5E, 5HR6E
Rogue Sport	2017	6MA0B
	2018	6MA1B
		6MG0A, 6MG1A, 6MG2A

45. Follow the on-screen instructions to navigate C-III plus and reprogram the ICC/ADAS control unit.

- Refer to steps 20-33 starting on page 10 for further details.

HINT:

- In some cases, more than one new P/N for reprogramming is available.
 - If more than one new P/N is available, the screen in Figure 28 displays.
 - Select and use the reprogramming option that does **not** have the message “Caution! Use ONLY with NTBXX-XXX”.
- If you get this screen and it is blank (no reprogramming listed), it means there is no reprogramming available for this vehicle. Close C-III plus and refer back to ASIST for further diagnosis.

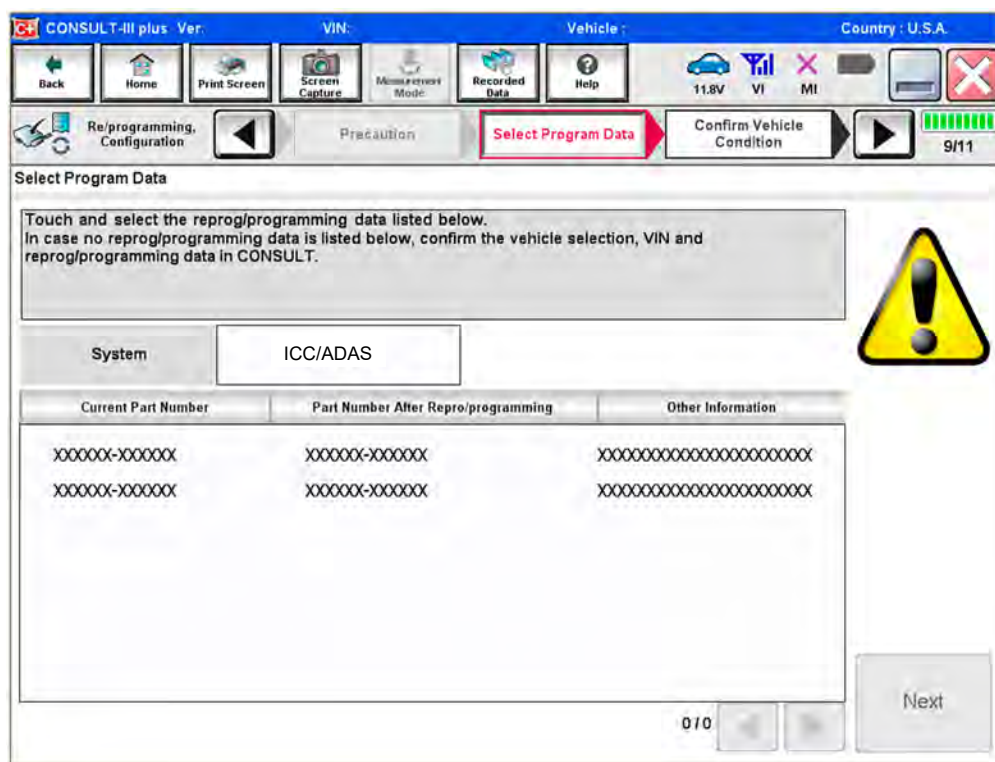


Figure 28

46. When the screen in Figure 29 displays, reprogramming is complete.
- HINT:** If the screen in Figure 29 does not display (indicating that reprogramming did not complete), refer to ICC/ADAS recovery on the next page.
47. Disconnect the battery maintainer or smart charger from the vehicle.
48. Select **Next**.

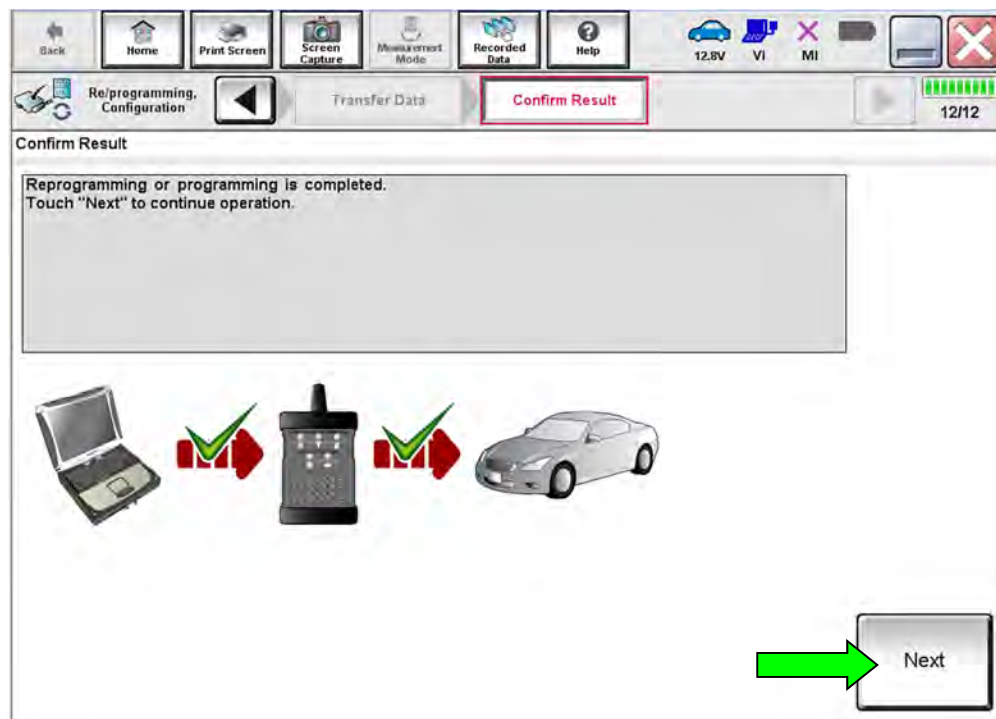


Figure 29

HINT: Additional steps/operations are required before C-III plus will provide the final reprogramming confirmation report. Continue with the reprogramming procedure on page 25.

ICC/ADAS Recovery

Do not disconnect plus VI or shut down Consult III plus if reprogramming does not complete.

If reprogramming does not complete and the “!?” icon displays as shown in Figure 30:

- Check battery voltage (12.0 - 15.5 V).
- Ignition is ON, engine OFF.
- External Bluetooth® devices are OFF.
- All electrical loads are OFF.
- **Select retry and follow the on screen instructions.**
- **“Retry” may not go through on first attempt and can be selected more than once.**

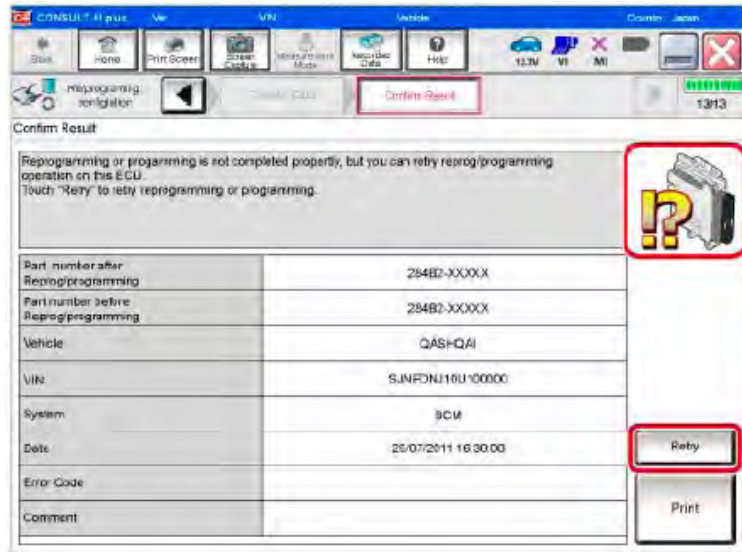


Figure 30

If reprogramming does not complete and the “X” icon displays as shown in Figure 31:

- Check battery voltage (12.0 - 15.5 V).
- CONSULT A/C adapter is plugged in.
- Ignition is ON, engine OFF.
- Transmission is in Park.
- All C-III plus / VI cables are securely connected.
- All C-III plus updates are installed.
- **Select Home, and restart the reprogram procedure from the beginning.**

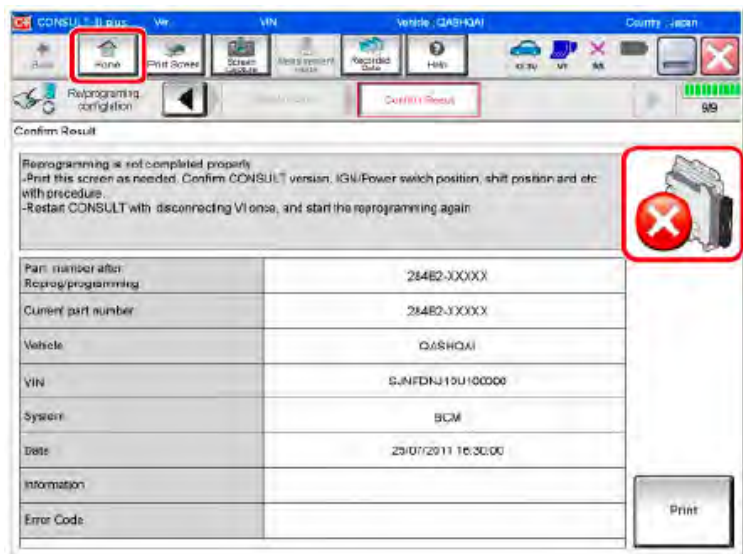


Figure 31

49. Follow the on on-screen instructions to erase DTCs.
 - If needed, refer to step 37 on page 18 for further details.
50. When the entire reprogramming process is complete, the screen in Figure 32 will display.
51. Verify the before and after part numbers are different.
52. Print a copy of the screen below (Figure 32) and attach it to the repair order for warranty documentation.

HINT: If you cannot print the screen:

 - a. Select Screen Capture.
 - b. Name the file.
 - c. Save the file in My Documents.
 - A copy of the screen is now saved in the CONSULT PC. It can be retrieved and printed at a later time.
53. Select **Confirm**.

Print Result / Operation Complete

All tasks are completed. Confirm LAN access, touch "Print" to print out this page.
In case CONSULT can NOT immediately access to LAN or printer, Screen Capture function is available for temporarily storage of this page. Touch "Screen Capture", and save it. Screen capture data is in "C:\ plus Data Folder" on desk top, and open the folder named "ScreenImages".

Part number after Reprog/programming	284E7-XXXXX
Part number before Reprog/programming	284E7-XXXXX
Vehicle	T32 ROGUE
VIN	XXXXXXXXXXXXXXXXXX
System	ICC/ADAS
Date	XXXXXXXXXXXXXXXXXX

1/1

Print

Other Operation

Confirm

Figure 32

54. Close C-III plus.
55. Turn the ignition OFF.
56. Disconnect the plus VI from the vehicle.
57. Test drive the vehicle and make sure it operates correctly and the MIL is OFF.
 - If the MIL comes ON, go back to ASIST for further diagnostic information.
 - Diagnosis and repairs beyond ICC/ADAS or LASER/RADAR reprogramming or replacement are not covered by this bulletin.

CLAIMS INFORMATION

Submit a Primary Part (PP) type line claim using the following claims coding:

DESCRIPTION	PFP	OP CODE	SYM	DIA	FRT
Reprogram Laser/Radar Control Unit	(1)	RX6FAA	ZE	32	0.4 (2)

And, on the same line

DESCRIPTION	PFP	OP CODE	SYM	DIA	FRT
Reprogram ICC/ADAS Control Unit	(1)	RX6EAA	ZE	32	0.4 (2)

(1) Refer to the electronic parts catalog and use the Distance Sensor (28438-*****) part number as the Primary Failed Part (PFP).

(2) FRT allows adequate time to access DTC codes. No other diagnostic procedures subsequently required. Do NOT claim any Diagnostic Op Codes with this claim.

AMENDMENT HISTORY

PUBLISHED DATE	REFERENCE	DESCRIPTION
June 8, 2018	NTB18-041	Original bulletin published.
July 19, 2018	NTB18-041a	Changes made throughout.
March 19, 2019	NTB18-041b	Laser/Radar Control Unit Replacement procedure and PARTS INFORMATION section removed. Title, Repair Overview, CLAIMS INFORMATION section, and page 9 revised.
August 29, 2019	NTB18-041c	Updated APPLIED VEHICLES, ACTION, and part numbers in Table A.

